

Software Installation Guide

English

Printed in China  
LW5744001



## Introduction

### Features

|                |  |
|----------------|--|
| P-touch Editor | Makes it easy for anyone to create a wide variety of custom labels in complex layouts by using fonts, templates, and clip art. |
| Printer Driver | Lets you transfer label designs and graphics to the connected P-touch labeller when using P-touch Editor on your PC.           |

### CD-ROM Precautions

- Do not scratch the CD-ROM.
- Do not subject the CD-ROM to extremely high or extremely low temperatures.
- Do not put heavy objects on the CD-ROM or apply force to the CD-ROM.
- The software contained on the CD-ROM is meant for use with your purchased machine only.
- It may be installed on multiple PCs for use at an office, etc.

## System Requirements

Before installation, check that your system configuration meets the following requirements.

|           |            |  |
|-----------|------------|--|
| OS        | Windows®   | Microsoft® Windows® XP / Windows Vista® / Windows® 7   |
|           | Macintosh® | Mac OS® X 10.3.9 - 10.6  |
| Hard disk | Windows®   | Disk space more than 70 MB   |
|           | Macintosh® | Disk space more than 100 MB  |
| Memory    | Windows®   | Windows® XP: More than 128 MB<br>Windows Vista®: More than 512 MB<br>Windows® 7: More than 1 GB (32-bit) or 2 GB (64-bit)                        |
|           | Macintosh® | Mac OS® X 10.3.9: More than 128 MB<br>Mac OS® X 10.4.x: More than 256 MB<br>Mac OS® X 10.5.x: More than 512 MB<br>Mac OS® X 10.6: More than 1 GB |
| Monitor   | Windows®   | SVGA, high colour or higher graphics card  |
|           | Macintosh® | More than 256 colours  |
| Others    |            | CD-ROM drive   |

Microsoft, Windows and Windows Vista are registered trademarks of Microsoft Corporation, USA.  
Apple, Macintosh and Mac OS are trademarks of Apple Inc., registered in the United States and other countries.  
The names of other software or products used in this document are trademarks or registered trademarks of the respective companies that developed them.

## For Windows

## Installing the Software and Printer Driver

## Installing the P-touch Editor and Printer Driver

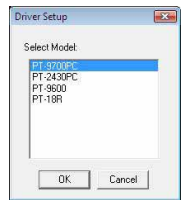
The procedure for installing the software varies depending on the OS of the computer. Installation procedure is subject to change without notice.  
The printer names in the following screens may differ from your purchased printer name.

- Do not connect the printer to the computer until directed to do so.
- The installation procedure may change depending on the Operating System on your PC. Windows Vista® is shown here as an example.
- For details of the software, see the "Software User's Guide" (PDF).
- You can find the "Software User's Guide" (PDF) by clicking [Start] - [All Programs] - [Brother P-touch] - [Manuals] - [P-touch] - [Software User's Guide].

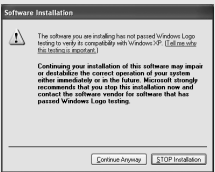
- Start the computer and put the CD-ROM into the CD-ROM drive.
- Select the desired language, and click the type of setup you prefer.  
**Standard:**  
All features (P-touch Editor and the Printer driver) will be installed (default).  
**Custom:**  
You can specify which features to install. Recommended for advanced users.  
**Display User's Guide:**  
Software User's Guide (PDF) (PDF reader software required).  
**Adobe Reader Download:**  
Link to the download page for Adobe® Reader® will be displayed.



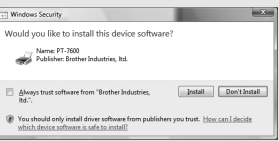
- Read the license agreement carefully. If you agree with the terms and conditions of the license agreement, click [Yes] to continue the installation.  
Follow the on-screen instructions.
- Select the Microsoft® Office application(s) you would like to use the Add-In functions with, and click [Next].  
(The Add-In function will let you create labels directly from your Microsoft® Office applications.)  
Follow the on-screen instructions.
- Select the desired model, and then click [OK].  
Follow the on-screen instructions of the driver installation.



►For Windows® XP  
Although a message warning that no digital signature was found appears soon after driver installation begins, it is safe to click [Continue Anyway].

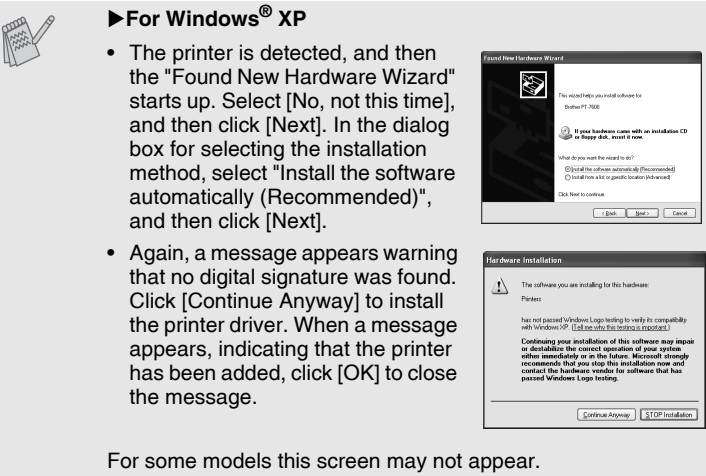


►For Windows Vista® / Windows® 7  
When the message confirming installation of software published by Brother appears, click [Install].



For some models this screen may not appear.

- When instructed, connect your printer to the computer by using the USB cable, and then turn on the printer.
- Once the printer is detected, the driver will automatically be installed.



For some models this screen may not appear.

- When instructed to register your printer online, select a registration method and click [Next]. If you have selected to register the product online, your default internet browser will be launched in a new window. Follow the instructions to register your printer.
- Click [Finish]. The software installation is now complete. Restart your computer if you are instructed to do so.
- Start the software. Click [Start] - [All Programs] - [Brother P-touch] - [P-touch Editor 5.0] to start P-touch Editor 5.0.


## Uninstalling the Software and Printer Driver

The uninstall procedure for P-touch Editor differs depending on the operating system being used.  
Please read "PT-XXXX" as your printer name in the following steps.

## Uninstalling P-touch Editor

- For Windows® XP  
From [Control Panel], go to [Add or Remove Programs].  
The [Add or Remove Programs] dialog box appears.  
►For Windows Vista® / Windows® 7  
From [Control Panel], go to [Programs] and open [Programs and Features].  
The [Uninstall or change a program] dialog box appears.
- Choose "Brother P-touch Editor 5.0", and click [Remove (XP) / Uninstall (Windows Vista® / Windows® 7)].
- Click [OK].  
The uninstall operation starts. After the software is removed from your computer, the [Maintenance Complete] dialog box appears.
- Close the [Add or Remove Programs (XP) / Programs and Features (Windows Vista® / Windows® 7)] dialog box.  
P-touch Editor has been uninstalled.

## Uninstalling the Printer Driver

- Turn off the printer.
- For Windows® XP  
Click the "Start" button, go to [Printers and Faxes] window.  
►For Windows Vista®  
From [Control Panel], go to [Hardware and Sound] and open [Printers].  
►For Windows® 7  
Click , go to [Devices and Printers].

For details, see Windows® Help.

## For Macintosh

## Installing the Software and Printer Driver

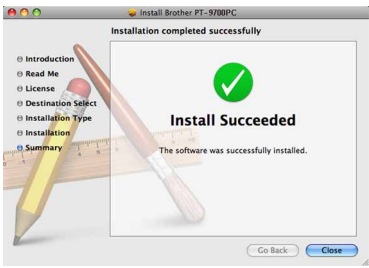
## Installing the P-touch Editor and Printer Driver

The procedure for installing the software varies depending on the OS of the computer. Installation procedure is subject to change without notice.  
Please read "PT-XXXX" as your printer name in the following steps. The printer names in the following screens may differ from your purchased printer name.

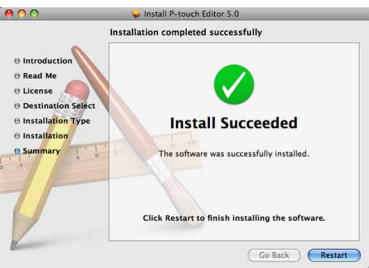
- Do not connect the printer to your Macintosh® before P-touch Editor 5.0 installation has been completed.
- You must be logged on as a user with administrator privileges to install this software.
- Turn off the printer with the power button and then with the main power switch.

Below is the example for Mac OS® X 10.5.7.

- Start up the Macintosh®, and insert the CD-ROM into the CD-ROM drive. Double-click the "PT-Series" (CD-ROM) icon.
- Double-click "Brother PT-XXXX Driver.pkg" in the "Mac OS X" folder. The Driver Installer starts up. Follow the on-screen instructions.
- After the installation is completed and the screen shown below is displayed, click [Close].  
The installation of the printer driver is completed.  
Next, install P-touch Editor 5.0.



- Double-click "P-touch Editor 5.0 Installer.mpkg". The P-touch Editor 5.0 Installer starts up. Follow the on-screen instructions.
- When the installation is completed and the message "Click Restart to finish installing the software." is displayed, click [Restart].  
The Macintosh® is restarted.  
The installation of software is completed.



- After restarting the Macintosh®, connect your printer to the Macintosh® by using the USB cable, and then turn on the printer.
- If you are connecting the printer to the Macintosh® via a USB hub, it may not be detected correctly. If so, connect the printer directly to the USB port on the Macintosh®.
- For Mac OS® X 10.3.9 - 10.4.x  
Double-click the drive where Mac OS® X is installed, and click [Applications] - [Utilities] - [Printer Setup Utility].  
  
►For Mac OS® X 10.5.x - 10.6  
Click Apple menu - [System Preferences], and click [Print & Fax].


## Uninstalling the Software and Printer Driver

The uninstall procedure for P-touch Editor differs depending on the operating system being used.  
Please read "PT-XXXX" as your printer name in the following steps.

## Uninstalling P-touch Editor

- On the drive where P-touch Editor is installed, double-click the "Applications" folder - "P-touch Editor 5.0" folder - "Uninstall P-touch" folder - "UninstallPtEditor.command".  
The "Terminal" window appears, and the uninstall operation starts.



- Administrator privileges are required for the uninstall operation.
- In case the [Terminal] window does not appear by double-clicking the "UninstallPtEditor.command", right click (or press control key + click) the "UninstallPtEditor.command". The context menu appears. Open the [Terminal] window from the context menu.

- Click  to close the [Terminal] window.
- Delete the "P-touch Editor 5.0" folder from the "Applications" folder.

Before you delete the "P-touch Editor 5.0" folder, please check if any necessary files are saved in it.

P-touch Editor has been uninstalled.

## Uninstalling the Printer Driver

- Turn off the printer.
- For Mac OS® X 10.3.9 - 10.4.x  
Double-click the drive where Mac OS® X is installed, and click [Applications] - [Utilities] - [Printer Setup Utility].  
The [Printer List] window appears.  
  
►For Mac OS® X 10.5.x - 10.6  
Click Apple menu - [System Preferences], and click [Print & Fax].
- For Mac OS® X 10.3.9 - 10.4.x  
Choose "PT-XXXX", and click .  
  
►For Mac OS® X 10.5.x - 10.6  
Choose "Brother PT-XXXX", and click .
- Close the [Printer List] / [Print & Fax] window.  
The printer driver has been uninstalled.

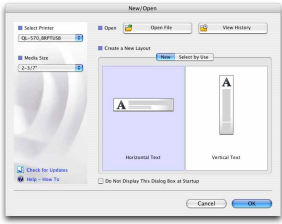
## How To Use the P-touch Editor Help

## Starting P-touch Editor Help

The following is the example for Mac® X 10.4.9. The printer names in the following screens may differ from your printer name.

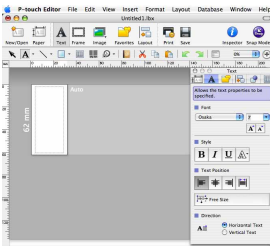
### Start from New/Open dialog box

In the New/Open dialog box, click [Help - How To].



### Start from P-touch Editor

To start the P-touch Editor Help, click the Help menu and choose [P-touch Editor Help].



- For Windows® XP  
Choose "Brother PT-XXXX", and click [File] - [Delete].  
►For Windows Vista® / Windows® 7  
Choose "Brother PT-XXXX", right click on the icon, and then click [Delete] (Windows Vista®) / [Remove device] (Windows® 7).
- For Windows® XP  
Go to [File] - [Server Properties].  
►For Windows Vista®  
In the [Printers] window, right click and go to [Run as administrator] - [Server Properties...].  
If the authorization confirmation dialog appears, click [Continue]. If the [User Account Control] dialog box appears, enter the password and click [OK].  
►For Windows® 7  
Choose [Fax] or [Microsoft XPS Document Writer] in the [Devices and Printers] window, and then click [Print server properties], which appears in the menu bar.
- For Windows® XP  
Click the [Drivers] tab and choose "Brother PT-XXXX". Then, click [Remove].  
►For Windows Vista®  
Click the [Drivers] tab and choose "Brother PT-XXXX". Then, click [Remove...].  
►For Windows® 7  
Click the [Drivers] tab, and then click [Change Driver Settings].  
(If a User Account Control message appears, type in the password, and then click [OK].)  
Choose "Brother PT-XXXX", and then click [Remove...].
- For Windows® XP  
Now, go to step 7.
- For Windows Vista® / Windows® 7  
Choose [Remove driver and driver package] and click [OK].  
Follow the on-screen instructions.
- Close the [Print Server Properties] window.  
The printer driver has been uninstalled.

## How To Use the P-touch Editor Help

## Starting P-touch Editor Help

Detailed instructions to create labels with the software is described in Help. The printer names in the following screens may differ from your purchased printer name.

### Starting from Start button

- Click [Start] - [All Programs] - [Brother P-touch] - [P-touch Editor 5.0].
- In the [New/Open] dialog box, click [Help - How To].

