



General Information

■ Compilation and Publication Notice

Under the supervision of Brother Industries Ltd., the manuals for this product have been compiled and published, covering the latest product's descriptions and specifications. The contents of the manuals for this product and the specifications of this product are subject to change without notice.

Brother reserves the right to make changes without notice in the specifications and materials contained herein and shall not be responsible for any damages (including consequential) caused by reliance on the materials presented, including but not limited to typographical and other errors relating to the publication. The screen images in this guide can differ depending on your OS or printer.

■ Trademarks

Microsoft, Windows Vista, Windows Server and Windows are either registered trademarks or trademarks of Microsoft Corp. in the United States and/or other countries. Apple, Macintosh and Mac OS are trademarks of Apple Inc., registered in the United States and other countries.

The names of other software or products used in this document are trademarks or registered trademarks of the respective companies that developed them.

Each company whose software title is mentioned in this guide has a Software Licence Agreement specific to its proprietary programs.

All other brand and product names mentioned in this Quick Setup Guide are registered trademarks of their respective companies.

■ Symbols Used in this Guide

The symbols used throughout this guide are as follows:

⚠ This symbol shows information or directions that should be followed. If ignored, the result may be injury, damage, or failed operations.

📖 This symbol shows information or directions that can help you better understand and use the machine more efficiently.

Safety Precautions

Read and understand all of these instructions and save them for later reference. Follow all warnings and instructions marked on the product.

⚠ WARNING	Indicates a potentially hazardous situation which, if the product is handled without following the warnings and instructions, could result in death or serious injuries.
⚠ CAUTION	Indicates a potentially hazardous situation which, if the product is handled without following warnings and instructions, may result in minor or moderate injuries, and/or property damage.

The symbols used in the manuals for this product are as follows:

⊘	Action NOT allowed	⊘	DO NOT disassemble the product.
⊘	DO NOT splash the product with or immerse the product in water.	⊘	DO NOT touch a specified part of the product.
⚠	Mandatory action	🔌	Unplugging
⚠	Alerts to the possibility of electrical shock		

■ To use the machine safely

⚠ WARNING

Follow these guidelines to avoid fire, electrical shock, or other damage.

■ The Machine

- ⊘ Dispose of plastic bags correctly and keep away from babies and children. Do not wear or play with plastic bags.
- 🔌 Unplug the power cord immediately and stop using the machine if you notice any abnormal odour, heat, smoke, discolouration, deformation or anything unusual whilst the machine is in use.
- ⊘ Do not disassemble the machine. For inspection, adjustment and repair of the machine, contact the retail outlet where the machine was purchased or your local authorised service centre.
- ⊘ Do not drop, hit or cause any damage to the machine.
- ⊘ Do not allow any liquids to come into contact with the machine.
- ⚠ Make sure to turn off the machine and remove the power cord from the electrical outlet when cleaning the machine. Failure to do so could cause an electrical shock or fire.
- ⊘ Do not use the machine with foreign objects in it. Do not drop any metal objects such as paper clips and staples into the machine. If water or any foreign objects should enter the machine, unplug the power cord from the electric outlet and remove the foreign object. If necessary, contact the retail outlet where the machine was purchased or your local authorised service centre.
- ⚠ To avoid possible fire or electrical shock, never disassemble the machine or allow it to get wet.
- ⚠ Do not use paint thinner, benzene, alcohol or any other organic solvents to clean the machine. Doing so may cause damage to the surface finish. Use a soft, dry cloth to clean the machine.
- ⚠ Do not put any heavy objects or objects containing water on top of the machine. If water or any foreign object enters the machine, contact the retail outlet where the machine was purchased or your local authorised service centre.
- ⊘ Do not place the machine in a location where it could get wet, such as a kitchen, bathroom, or near a humidifier. Doing so could cause an electrical shock or fire.
- ⊘ Do not allow organic solvents (benzene, paint thinner, nail polish remover, deodoriser, etc.) to come into contact with the machine and its connecting cables. Doing so may cause the equipment to deform or dissolve, and there may be a risk of electrical shock or fire.

Follow these guidelines to avoid fire, electrical shock, or other damage.

■ Power Cord

- ⊘ Use only the authorised power source (220 - 240V AC) for the machine.
- ⚠ Use only the power cord included with the machine.
- ⚠ Do not handle the power cord or plug if your hands are wet.
- ⊘ Do not overload the electrical outlet with too many appliances or plug the power cord into a damaged electrical outlet.
- ⊘ Do not cut, damage, alter or place heavy objects on the power cord.
- ⚠ Regularly remove the power plug from the electrical outlet, and clean the base of the pins and between the pins. If you leave the power plug in the electrical outlet for an extended period of time, dust will accumulate at the base of the power plug pins. This could cause a short circuit that may result in a fire.
- ⊘ Do not use the power cord if it is damaged.
- ⚠ Ensure the power cord is correctly inserted into the electrical outlet.
- ⚠ Do not pull the power cord when removing the power plug from the electrical outlet. Doing so could cause an electrical shock or fire.
- ⊘ Do not bend, break or damage the cord in any way, as it may result in an electrical shock, fire or a machine malfunction.

⚠ CAUTION

Follow these guidelines to avoid fire, electrical shock, or other damage.

■ The Machine

- ⚠ The machine may malfunction if left near a television, radio, etc. Do not use the machine near any machine that can cause electromagnetic interference.
- ⚠ Ensure that small children do not put their fingers in the moving parts or openings of the machine.
- ⚠ The electrical outlet should be close to the machine and be easily accessible.
- ⚠ Do not touch the cutter. Personal injury could result.
- ⚠ Do not place the machine in areas exposed to direct sunlight, near heaters or other hot appliances, or in any area exposed to extremely high or low temperatures, high humidity or excessive dust. Doing so could cause the machine to malfunction.
- ⊘ Do not hold or lift the machine by the DK Roll cover. The cover could come off and the machine could fall and become damaged.
- ⊘ Do not hold the machine with only one hand. The machine may slip out of your hand.
- ⚠ Make sure of the correct orientation and procedure when attaching the various cables and optional products. In addition, use only the specified cables and optional products. Failure to do so could cause a fire or personal injury. Follow the instructions in the manual to correctly attach the equipment.

■ Power Cord

- 🔌 If the machine will not be used for an extended period, remove the power cord from the electrical outlet.

■ Cutter

- ⊘ Do not touch the blade of the cutter.
- ⊘ Do not open the top cover when the cutter is operating.

■ Installation/Storage

- ⚠ Put the machine on a flat, stable surface such as a desk.
- ⊘ Do not put any heavy objects on top of the machine.

General Precautions

■ The Machine

- The machine is a precision machine. Do not drop, hit or cause any damage to the machine.
- Do not lift the machine by the DK Roll compartment cover. The cover could come off and the machine could fall and become damaged.
- Do not insert any objects into or block the label output slot or USB port.
- Use only the interface cable (USB cable) included with the machine.
- When not in use for an extended period, remove the DK Roll from the machine.
- Do not attempt to print labels while the DK Roll cover is open.

■ Power Cord

- You should put the machine near an easily accessible, standard electrical outlet.

■ DK Roll (DK Label and DK Tape)

- Use only genuine Brother accessories and supplies (with marks). Do not use any unauthorised accessories or supplies.
- If the label is attached to a wet, dirty, or oily surface, it may peel off easily. Before applying the label, clean the surface to which the label will be applied.
- DK Rolls use thermal paper or film that can fade in colour or peel off surfaces if exposed to ultraviolet light, wind or rain.
- Do not expose the DK Rolls to direct sunlight, high temperatures, high humidity, or dust. Store in a cool, dark place. Use the DK Rolls soon after opening the package.
- Scratching the printed surface of the label with your finger nails or metal objects, or touching the printed surface with hands dampened by water or sweat can cause the colour to change or fade.
- Do not apply labels to any persons, animals, or plants. In addition, never apply labels to public or private property without permission.
- As the end of the DK Roll is designed to not adhere to the label spool, the last label may not be cut properly. If this happens, remove the remaining labels, insert a new DK Roll, and reprint the last label.

Note: To account for this, the number of DK Labels included on each DK Roll may be more than indicated on the package.

- When a label is removed after being applied to a surface, a portion of the label may remain.
- Prior to using CD/DVD labels, be sure to follow the instructions in your CD/DVD player's instruction guide regarding applying CD/DVD labels.
- Do not use CD/DVD labels in a slot loading CD/DVD player, for example a CD player in a car where the CD is slid into a slot in the CD player.
- Do not peel off the CD/DVD label once it is applied to the CD/DVD, a thin surface layer may come off, resulting in damage to the disk.
- Do not apply CD/DVD labels to CD/DVD disks designed for use with ink jet printers. Labels peel off these disks easily and using disks with peeled labels can result in loss or damage of data.
- When applying CD/DVD labels, use the applicator included with the CD/DVD label rolls. Failure to do so could cause damage to the CD/DVD player.
- Users shall take full responsibility for applying CD/DVD labels. Brother accepts no responsibility for any loss or damage of data caused by the inappropriate use of CD/DVD labels.
- Be careful not to drop the DK Roll.
- DK Rolls use thermal paper and thermal film. Both the label and print will fade with sunlight and heat. Do not use DK Rolls for outdoor use that requires durability.
- Depending on the area, material, and environmental conditions, the label may unpeel or become irremovable, or the colour of the label may change or be transferred to other objects. Before applying the label, check the environmental conditions and the material. Test the label by affixing a small piece of it to an inconspicuous area of the intended surface.

■ CD-ROM and Software

- Do not scratch or subject the CD-ROM to high or low temperatures.
- Do not put heavy objects on the CD-ROM or apply force to the CD-ROM.
- The software contained on the CD-ROM is meant for use with this machine only. See the License on the CD-ROM for details. This software may be installed on multiple computers for use in an office, etc.

For Australia Only:

■ Warranty & Repair

For details about warranty on your Brother Product, the details are listed on the following link: www.brother.com.au under Service & Support > Warranty. For warranty service (repair) of your Brother product you will need to retain a copy of your sales docket and contact the Support Centre for location of the nearest Authorised Warranty Centre (AWC).

■ Support

For technical support for your Brother Product other than what you can resolve through the User's Guide, please visit our website or our solutions website for FAQs/troubleshooting, drivers and software, or contact the Product Support Centre for any technical or customer care/support enquiry.

Product Support Centre: Australia Brother International (Aust) Pty Ltd

Phone: 02 8875 6000

Fax: 02 9870 7223

E-mail: Please visit www.brother.com.au/ServiceSupport/EmailSupport.aspx and submit an e-mail enquiry.

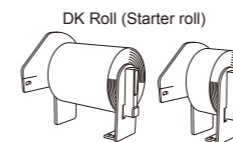
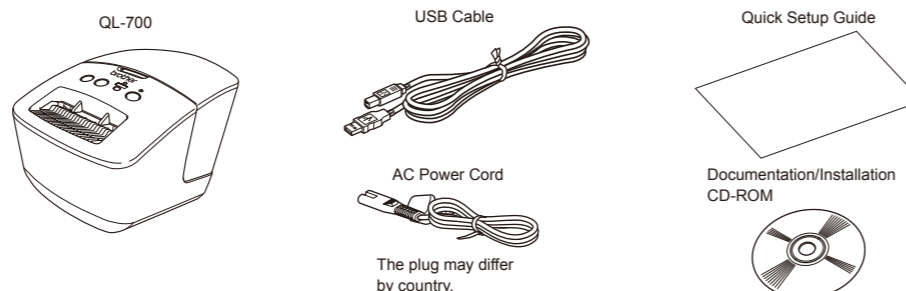
Web Site: www.brother.com.au

Solutions Site: support.brother.com

Our Technical Support Consultants are available 5 days a week by phone during the hours of 8.30am to 5pm, Monday to Friday.

1 Unpack the QL-700 and check the components.

Check that the package contains the following before using the printer. If any item is missing or damaged, contact your Brother dealer.



NOTE

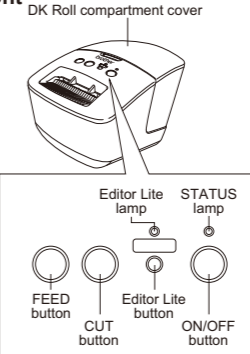
The Brother QL-700 includes the following two starter rolls:

- One starter roll of DK Die-cut Standard Address Labels (100 labels)
- One starter roll of DK Continuous Durable Tape (62 mm x 8 m)

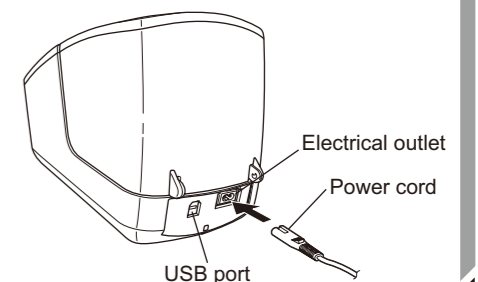
Start Here

Parts Description (Main Printing Unit)

■ Front

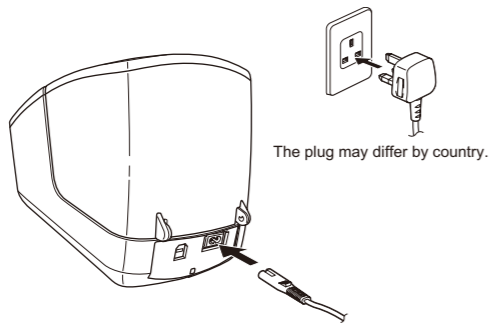


■ Rear



2 Connect the Power Supply.

Connect the power cord to the QL-700 and then plug the power cord into an electrical outlet.



Definition of the STATUS Lamp

The STATUS lamp on the Brother QL printer indicates the current operating condition.

Lamp	Condition
Not lit ○	Power is OFF.
Green lamp is lit ●	Power is ON.
Green lamp is flashing ○●○●○●○●	Receiving data from the PC. Transferring data.

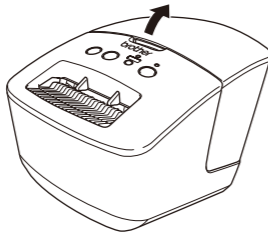
Lamp	Condition
Orange lamp is lit ●	The roll cover is opened. Close the roll cover correctly. The machine is in the transitional reset state. For details on resetting the QL-700, see the "User's Guide" (PDF).
Orange lamp is flashing ○●○●○●○●	Cooling (Wait for the temperature of the print head to cool down). Reset in progress. For details on resetting the QL-700, see the "User's Guide" (PDF).
Red lamp is lit ●	The machine is booting.

Lamp	Condition
Red lamp is flashing ○●○●○●○●	If the red light flashes at 1 second intervals, one of the following errors has occurred: • End of DK Roll • Incorrect DK Roll installed • Feed error • No DK Roll • Transmission error • The roll cover is opened (While running) • Data deployment error Red lamp flashing at irregular intervals: • Cutter error Red lamp flashing quickly: • EEPROM error

3 Set the DK Roll.

3-1

Press and hold the ON/OFF button (⏻) to turn the QL-700 off. Hold the Brother QL-700 by the front of the machine, and firmly lift the DK Roll compartment cover to open the cover.

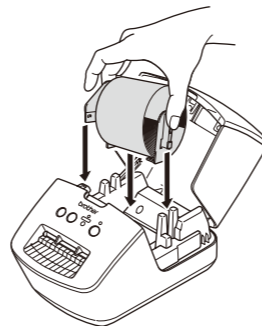


3-2

Put the spool into the spool guides in the DK Roll compartment.

IMPORTANT

- Make sure that the spool arms are inserted firmly in the spool guides on the left and right.
- Insert the spool with the DK Roll into the spool guide located on the right hand side of the Brother QL-700.

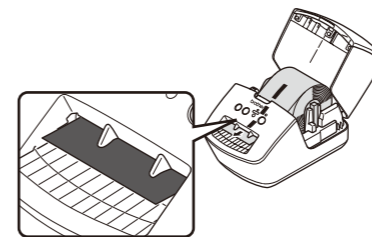


3-3

Thread the end of the DK Roll into the slot until it aligns to the area shown on the right.

IMPORTANT

- Align the end of the roll with the upright edge of the label output slot.

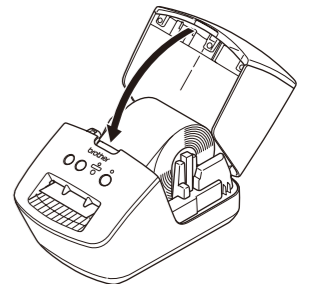


3-4

Close the DK Roll compartment cover.

IMPORTANT

- When you press the ON/OFF button (⏻) to turn the Brother QL-700 on, the end of the DK Die-cut Label is aligned automatically.



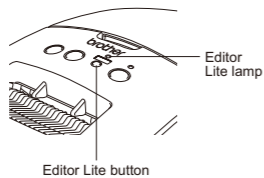
4 Connect the USB cable and launch P-touch Editor Lite.

4-1

Turn on the QL-700, then press and hold down the Editor Lite button until the green Editor Lite lamp lights up.

NOTE

Editor Lite is set as the default mode.

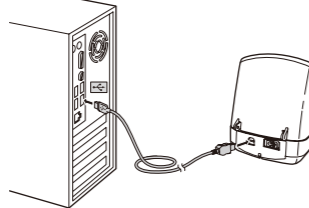


4-2

Connect the USB cable to the PC.

NOTE

If you are connecting the printer via a USB hub, it may not be detected correctly.



4-3

After the USB cable is connected, a dialog box appears on the PC display. (The following screens may differ depending on the operating system on your PC)

NOTE

- If you do not see the dialog box, it may be hidden behind an open software program window. Minimize all windows to show the dialog box.
- It will take longer than usual to start P-touch Editor Lite when connecting the QL printer to your computer for the first time. If the software does not start automatically when you connect the machine, you may launch it from MyComputer. Start P-touch Editor Lite by double-clicking PTLITE10.EXE.

When using Macintosh

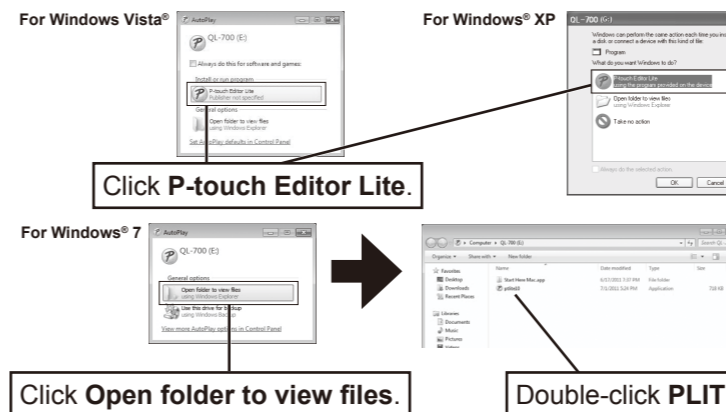
P-touch Editor Lite is not available for Macintosh.

The [QL-700] icon is displayed when the QL-700 is connected to a Mac in the Editor Lite mode.

Open [QL-700] from the desktop, and then execute [Start Here Mac].

If P-touch Editor 5.0 and the QL-700 printer driver are not installed, a message advising to install is displayed.

Install them, and use P-touch Editor 5.0.



When using Windows Vista®

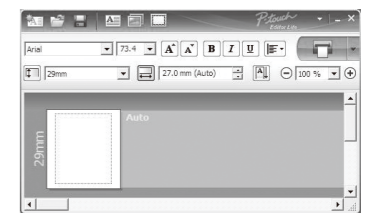
When connecting the device for the first time, perform the scan and then select the **Always do this for software and games** check box on the dialog box displayed when the scan completes. P-touch Editor Lite will start automatically the next time you connect the QL-700.

4-4

P-touch Editor Lite starts.


IMPORTANT

- Do not turn off the power or disconnect the QL-700 while using P-touch Editor Lite.



How to disconnect the QL-700

When using Windows®:

1. Exit P-touch Editor Lite by clicking on the **X** in the top right corner of the window.
2. To disconnect the QL-700, click the icon in the computer's task bar (🖨️, 🗄️, or 🗑️).
3. Click Safely remove USB Mass Storage Device.

 - Drive letter may differ from computer to computer.
4. When the message indicating that the device can be safely removed is displayed, turn off the QL-700 and disconnect the USB cable.

When using Macintosh:

1. Select [QL-700] on the desktop, and then perform one of the following:
 - Select [Eject] from the Context menu
 - Drag and drop it in the Trash
2. When a message indicating that the device can be safely removed is displayed, turn off the QL-700 and disconnect the USB cable.

Installing P-touch Editor 5.0 and Printer Driver (for advanced functions)

IMPORTANT

Confirm the Editor Lite is turned off before connecting the QL-700 to your computer with the USB cable. Press and hold down the Editor Lite button until the Editor Lite lamp turns off.

1. Start the computer and put the CD-ROM into the CD-ROM drive. (The screen on the right appears.)
2. Install the software by following the instructions on screen.

NOTE

For details of the software, see the "Software User's Guide" (PDF).



When using Windows®



When using Macintosh