

D200
User's Guide
English

With your PT-D200, you can create labels for multiple applications. Select from the many frames, character sizes and styles to design beautiful custom labels. In addition, the variety of tape cartridges available allows you to print labels with different widths and exciting colours.

Read this manual carefully before you begin and keep the manual in a handy place for future reference.

Printed in China
D00FSB001



Safety Precautions

WARNING

Indicates a potentially hazardous situation which, if not avoided, could result in death or serious injuries.

Follow these guidelines to avoid the risk of fire, burns, injury, electric shocks, rupture, overheating, abnormal odours or smoke.

- Always use the specified voltage and the recommended AC adapter (AD-24ES) for the P-touch labeller to prevent any damage or failure.
- Do not touch the P-touch labeller during a lightning storm.
- Do not use the machine/AC adapter in places of high humidity (such as bathrooms).
- Do not overload the power cord.
- Do not place heavy objects on, or damage the power cord or plug. Do not forcibly bend or pull the power cord. Always hold the AC adapter carefully when disconnecting from the power outlet.
- Make sure that the plug is fully inserted in the power outlet. Do not use an outlet that is loose.
- Do not allow the machine/AC adapter/power plug/batteries to get wet, for example, by handling them with wet hands or spilling beverages onto them.
- Since loss of eyesight may result when leaked fluid from batteries gets into your eyes, immediately rinse your eyes with a large amount of clean water, and then seek medical attention.
- Do not disassemble or modify the P-touch labeller/AC adapter/batteries.
- Do not allow a metal object to contact both the plus and minus ends of a battery.
- Do not use sharp objects, such as tweezers or a metallic pen, to change the batteries.
- Do not throw the batteries into fire or expose to heat.
- Disconnect the AC adapter, remove batteries immediately and stop using the machine if you notice abnormal odour, heat, discoloration, deformation or anything unusual while using or storing it.
- Do not use a damaged or leaking battery as the fluid may get on your hands.
- Do not use a deformed or leaking battery or one whose label is damaged. There is a possibility of generating heat.

CAUTION

Indicates a potentially hazardous situation which, if not avoided, may result in minor or moderate injuries.

Follow these guidelines to avoid personal injury, liquid leakage, burns or heat.

- When the machine is not being used, store it out of the reach of children. In addition, do not allow children to put machine parts or labels in their mouths. If any object has been swallowed, seek medical attention.
- Do not touch metal parts near the print head immediately after printing.
- Do not touch the cutter blade.
- If leaked fluid from batteries gets onto your skin or clothes, immediately rinse them with clean water.
- Remove the batteries and disconnect the AC adapter if you do not intend to use the P-touch labeller.
- Do not use a battery other than that specified. Do not use combinations of old and new batteries or combinations of different types, different charging levels, different manufacturers or different models. Do not insert a battery with its plus and minus ends reversed.
- Do not drop or hit the P-touch labeller/AC adapter.
- Do not press on the LCD display.
- Do not put your finger inside the machine when you close the back cover.
- Before using Ni-MH rechargeable batteries, carefully read the instructions for the batteries and battery charger, and be sure to use them correctly.
- When using Ni-MH rechargeable batteries, charge the batteries with a specialized battery charger before using the batteries.

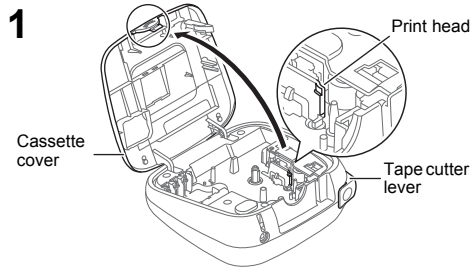
General Precautions

- Depending on the location, material, and environmental conditions, the label may unpeel or become irremovable, the colour of the label may change or be transferred to other objects. Before applying the label, check the environmental conditions and the material.
- Do not use the P-touch labeller in any way or for any purpose not described in this guide. Doing so may result in accidents or damage to the machine.
- Use only Brother TZe tapes with the P-touch labeller. Do not use tapes that do not have the mark.

Declaration of Conformity
(Europe/Turkey only)

We, Brother Industries, Ltd.
15-1, Naeshiro-cho, Mizuho-ku,
Nagoya 467-8561 Japan
declare that this product and AC adapter are in conformity with the essential requirements of all relevant directives and regulations applied within the European Community.
The Declaration of Conformity (DoC) can be downloaded from our website. Visit support.brother.com and:
• select "Europe"
• select your country
• select "Manuals"
• select your model
• select "Declaration of Conformity"
• click "Download"
Your Declaration will be downloaded as a PDF file.

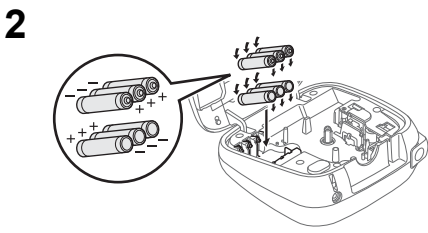
Power Supply and Tape Cassette



Open the cassette cover by pressing the above indicated area at the top end of the machine.

If a tape cassette is already installed, remove it by pulling it straight up. Also, if batteries are already installed, remove them.

- Make sure that the power is turned off when replacing batteries or tape cassettes.



Insert six new AAA alkaline batteries (LR03) or fully charged Ni-MH batteries (HR03), making sure that their poles point in the correct directions.

Users of alkaline batteries:

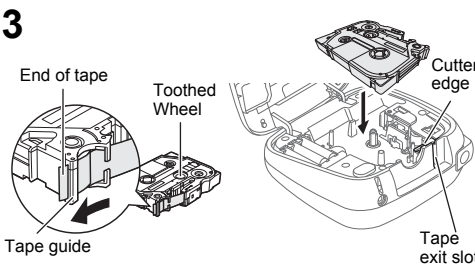
Always replace all six batteries at the same time with brand new ones.

Users of Ni-MH batteries:

Always replace all six batteries at the same time with fully charged ones.

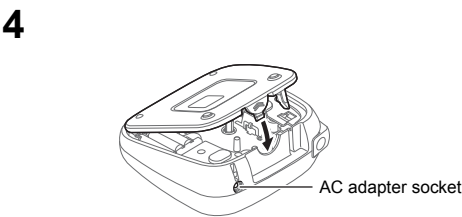
NOTE

Visit us at support.brother.com for the latest information about the recommended batteries.



Insert a tape cassette, making sure that it snaps into place.

- Make sure that the end of the tape feeds under the tape guides.
- Use only Brother TZe tapes with this machine.



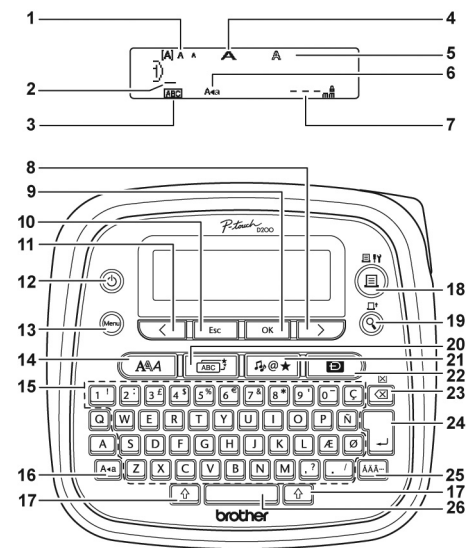
Securely close the cassette cover, making sure that it snaps into place.

NOTE

When using optional AC adapter (AD-24ES)

- Connect the AC adapter into the AC adapter socket on the top of the machine.
- Insert the plug into the nearest standard electrical outlet.
For memory back up, we recommend using AAA alkaline batteries (LR03) or Ni-MH batteries (HR03) together with the AC adapter.

LCD Display & Keyboard



- Size
- Cursor
- Underline/Frame
- Width
- Style
- Caps
- Label Length
If a specific label length has been selected, also appears.
- Cursor key: Right (Use with Shift key to go to end of the text.)
- OK key
- Escape key
- Cursor key: Left (Use with Shift key to go to start of the text.)
- Power key
- Menu key
- Font key
- Character keys
- Caps key
- Shift keys
- Print key
- Preview key
- Frame key
- Symbol key
- DECO MODE key
- Backspace key
- Enter key
- Accent key
- Space key

NOTE

- The LCD shows one row of 15 characters; however, the text that you enter can be up to 80 characters in length.
- While selecting the settings, press the Space key to go back to the default item.

- The print preview is a generated image of the label, and may differ from the actual label when printed.
- Label length shown on LCD may slightly differ from the actual label length when printed.

Troubleshooting

Error message

Message	Cause/Remedy
Low Battery!	The batteries are weak. If using AAA alkaline batteries: Replace them with new ones. If using Ni-MH batteries: Charge them fully.
Battery Dead	The installed batteries are running low.
Invalid!	<ul style="list-style-type: none">There is no text above the cursor when you selected [Numbering].An invalid character was selected for [Numbering].An invalid number was selected for [Tab Length] or [Label Length].An invalid value was entered as the label length while using the DECO MODE or Name Label function.
No Text!	<ul style="list-style-type: none">You tried to print a text file when there is no data stored in the memory. is pressed when no text is entered.You tried to select [Numbering], [Mirror], or Text Preview when no text is entered. or was pressed when no text was entered while using the DECO MODE or Name Label function.
Line Limit!	<ul style="list-style-type: none">You tried to enter a 3rd line by pressing .You tried to print or preview two lines of text while 3.5 mm or 6 mm tape is installed. Install tape of a larger size.

Message	Cause/Remedy
No Cassette!	You tried to print a label when there is no cassette installed.
Cutter Error	The tape cutter lever was used in the middle of the printing process.
Text Full!	The maximum number of characters (80 characters, 50 characters for DECO MODE or Name Label function) have already been entered.
Text Limit!	With the DECO MODE or Name Label function: Since the number of entered characters exceeds the label length, reduce the text. All other functions: Since the number of entered characters exceeds the label length, reduce the text, or select [Auto] as the label length.
No Frame OK?	Printing on 3.5 mm tape with invalid Frame setting ON. (Select to print with no Frame, to cancel.)
OK to Feed?	Feeding tape after printing when [Chain Print] is selected. Refer to "Setting Margin".
Insert 12mm	Only 12 mm tapes are available for use with DECO MODE or the Name Label function.
Wrong Tape!	Use a tape cassette with the .

What to do when...

Problem	Solution
The display stays blank after you have turned on the machine.	<ul style="list-style-type: none">Check that the batteries are correctly inserted.If the batteries are weak, replace them.Check that the AD-24ES adapter is correctly connected.
When the label is printed out, the margin(space) is too large on both sides of the text.	<ul style="list-style-type: none">See "Setting Margin" in this users guide and select [Half] or [Narrow] to have smaller margins for your label.
The machine does not print, or the printed characters are not formed properly.	<ul style="list-style-type: none">Check that the tape cassette has been inserted correctly.If the tape cassette is empty, replace it.Check the cassette cover is properly closed.
The setting has cleared on its own.	<ul style="list-style-type: none">The batteries may be weak. Replace them.When power is disconnected for more than three minutes, all text & formats in the display will be lost. Language and Unit settings will also be cleared.
A blank horizontal line appears through the printed label.	<ul style="list-style-type: none">There maybe some dust on the print head. Remove the tape cassette and use a dry cotton swab to gently wipe the print head with an up-and-down motion.The print head can be cleaned more easily if the optional print head cleaning cassette (TZe-CL3) is used.

Problem	Solution
The machine has "locked up" (i.e., nothing happens when a key is pressed, even though the machine is on.)	<ul style="list-style-type: none">Refer to "Resetting the P-touch".
The power turns off when you try to print.	<ul style="list-style-type: none">The batteries may be weak. Replace them.Check that the batteries are correctly inserted.A wrong adapter is used; the recommended adapter is the AD-24ES.
The tape does not feed properly or the tape gets stuck inside the machine.	<ul style="list-style-type: none">Check that the end of the tape feeds under the tape guides.The cutter lever is used while printing. Do not touch the cutter lever during printing.
All text and format settings need to be cleared to create a new label.	<ul style="list-style-type: none">Press + and select [Text&Format].
The LCD is set to an incorrect language.	<ul style="list-style-type: none">Refer to "Initial Settings".

BASIC USAGE

Entering Text

► Switching Upper Case/Lower Case

Aa

Upper case (Aa ON) Lower case (Aa OFF)

1234567890

Caps

78mm

1234567890

Caps

73mm

► Making Two Lines of Text

Line 1

1234567890

58mm

Line 2

1234567890

58mm

Label image

ABC
DEF

NOTE

The return symbol (↵) will be displayed when the Enter key is pressed.

► Entering Tab

Menu

→

←

→

[Tab]

OK

To change tab length:

Menu

→

←

→

[Tab Length]

OK

→

←

→

[Auto/0-100 mm]

OK

► Entering Accented Characters

A - Z

→

AAA

→

AAA

/

←

→

OK

Refer to the table of accented characters (B) on the enclosed insertion sheet for a list of available accented characters.

To cancel operations, press Esc.

The order of accented characters differs depending on the selected LCD language.

► Changing Label Length

Menu

→

←

→

[Label Length]

OK

→

←

→

[Auto/30-300 mm]

OK

NOTE

After the label is printed, cut along the printed dots (·) with scissors so that the label length matches the machine setting.

If a specific label length has been selected, also appears in the LCD.

► To Clear

By pressing ☒, the letters will be deleted one by one.

To delete all text and settings:

↑

+

☒

→

←

→

[Text&Format]

OK

To delete text only:

↑

+

☒

→

←

→

[Text Only]

OK

Printing Labels

► Preview

Preview

The print preview is a generated image of the label, and may differ from the actual label when printed.

When the LCD cannot display all the text at a time, press ← → to display the hidden text.

► Feeding (Tape Feed)

↑

+

Preview

► Printing

☒ → [Copies:] ← → 1 - 9 →

OK

- If you need only 1 copy of the label, press OK without selecting the number of copies.
- The number of copies can also be specified by pressing a number key.
- To prevent damage to the tape, do not touch the cutter lever while the message "Printing..." or "Feeding..." is displayed.
- To cut off the label, push in the tape cutter lever on the upper-right corner of the machine.
- Peel the printed label from the backing and apply the label.
- You can print up to 9 copies of each label.

► Using Print Options (↑ + ☒)

[Numbering]

You can print many copies of the same text while incrementing a selected number by 1 after each label is printed.

Example: To print copies of a label containing a serial number (0123, 0124 and 0125)

← →

1234567890

69mm

→

↑

+

☒

→

← →

[Numbering]

OK

→

← →

4

Set

3-9

OK

Select the highest number you wish to be printed when setting the number.

[Mirror]

↑

+

☒

→

← →

[Mirror]

OK

→

[Mirror Print?]

OK

1234567890

- Use clear tape in [Mirror], so the labels can be read correctly from the opposite side when attached on glass, windows or other transparent surfaces.

Saving Label Files

You can save up to 30 labels and recall them for printing at a later date. A maximum of 80 characters can be saved per file. You can also edit and overwrite stored labels.

► Save

Menu

→

4

3

→

OK

←

→

[Save]

OK

→

←

→

0123456789

OK

► Print

Menu

→

4

3

→

OK

←

→

[Print]

OK

→

←

→

☒:P-touch

80mm

OK

→

[Copies:]

←

→

1

-

9

→

OK

► Open

Menu

→

4

3

→

OK

←

→

[Open]

OK

→

←

→

☒:P-touch

80mm

OK

NOTE

If you try to store a label when there is already a label stored to that number, a message "Overwrite?" will appear. Press OK to save your new label. Press Esc to cancel.

USING TEMPLATES

Name Label

This function allows you to create various name labels using the built-in templates. Refer to the Name Label format table (D) on the enclosed insertion sheet.

Example:

☒

Bill Anderson

ABC Company, Inc.

Menu

→

←

→

[Name Label]

OK

→

[Select Layout]

→

←

→

☒

Bill Anderson

ABC Company, Inc.

OK

→

Text 1

→

Bill Anderson

OK

→

Text 2

→

ABC Company, Inc.

OK

→

Label Length

→

←

→

[Auto/30-200mm]

OK

→

[Print]

OK

NOTE

After the label is printed, cut along the printed dots (·) with scissors so that the label length matches the machine setting.

If a specific label length has been selected, also appears in the LCD.

► To Clear

By pressing ☒, the letters will be deleted one by one.

To delete all text and settings:

↑

+

☒

→

←

→

[Text&Format]

OK

To delete text only:

↑

+

☒

→

←

→

[Text Only]

OK

To clear all text, press ↑ and ☒, then "Clear?" appears.

Press OK to clear. Press Esc to cancel.

When you access DECO MODE or Name Label function, your most recently printed DECO MODE or Name Label function text and label length will be recalled.

Press Esc to return to the previous step.

USEFUL FUNCTION KEYS

Font Key A A A

1 Press A A A to select the settings to enter text.

A A A → ← → Select an item OK

2 Press ← → to select the settings.

Font	A A A	Helsinki	A 1
		Brussels	A 1
		US	A 1
		Florida	A 1
		Belgium	A 1
		San Diego	A 1
		Los Angeles	A 1
		Calgary	A 1
		HEL + Atlanta *	A 1
		HEL + Adams *	A 1
Size	A A A	Large	A
		Medium	A
		Small	A
		× 2	A
		× 1/2	A
Width	A A A	Normal	A
		× 2	A
		× 1/2	A
		Normal	A
		Bold	A
		Outline	A
		Shadow	A
		Solid	A
Style	A A A	Italic	A
		I+Bold	A
		I+Outline	A
		I+Shadow	A
		Vertical	A
		Normal	A
		Bold	A

* When [HEL + Atlanta], for example, is selected, the font for characters, including accented characters, will be Helsinki, and the font for numbers and some symbols will be Atlanta. Other combined fonts will be divided in the same way.

NOTE

To cancel operations, press Esc.

Refer to the font sample table (F) on the enclosed insertion sheet.

The actual printed font size depends on the tape width, number of characters and number of input lines. Once characters reach a minimum size, the selected font will default to a custom font which is based on the Helsinki style. This allows labels to print using the smallest text possible on narrow or multi-line labels.

Frame Key ABC

Press ABC to select the frame design. Refer to the frame design table (E) on the enclosed insertion sheet.

ABC → ← → Select a frame OK

NOTE

To cancel operations, press Esc.

DECO MODE

This function allows you to create unique labels by using built-in templates. Refer to the DECO MODE format table (C) on the enclosed insertion sheet.

Example:

☒

ABCD EF

ABCD

☒ → [Select Layout] →

← →

☒

ABCD EF

ABCD

OK

→

[Input Text] → ABCDEF

OK

→

Label Length

→

← →

[Auto/30-200mm]

OK

→

[Print]

OK

- To exit the DECO MODE or Name Label function and return to the text input screen, do one of following:
 - Press Esc.
 - Press ← → to select [Cancel], and then press OK when "Print" appears.
- These features are only available when using 12 mm wide tape cassettes.
- The maximum label length is 200 mm for DECO MODE and Name Label function.
- When [Auto] is selected for "Label Length", the label will automatically adjust to the correct length for the text.
- Press to return to the [Auto] setting for "Label Length" mode.

Symbol Key @ ★

Press @ ★ to select various symbols. Refer to the table of symbols (A) on the enclosed insertion sheet for a list of available symbols.

@ ★ → ← → [Basic/Pictograph] OK

→ ← → Select category OK →

← → Choose a symbol OK

NOTE

To cancel operations, press Esc.

Short Cut Keys

Language	Menu →	
Label Length	Menu →	1
Margin	Menu →	2
Name Label	Menu →	3
File	Menu →	4
Tab	Menu →	5
Tab Length	Menu →	6
Clear	Menu →	☒
Unit	Menu →	7

Resetting the P-touch

You can reset the P-touch labeller when you want to initialise the settings, or in the event the P-touch labeller is not working properly.

- Turn off the P-touch labeller, hold down ↑ and R and then press ⏻ to turn the P-touch back on.
- Release ↑ and R.
The P-touch labeller turns on with the internal memory reset.

NOTE

All text, settings and stored files are cleared.

Specifications

Dimensions: (W x D x H)	Approx. 165(W) x 155(D) x 68(H)mm
Weight:	Approx. 490 g (without batteries and tape cassette)
Power supply:	Six AAA alkaline batteries (LR03) Six AAA Ni-MH batteries (HR03)*1 Optional AC adapter (AD-24ES)
Tape cassette:	Brother TZe tape (width) 3.5 mm, 6 mm, 9 mm, 12 mm

*1 Visit us at support.brother.com for the latest information about the recommended batteries.

Contact Information

Contact may differ by country.
See the Website at www.brother.eu