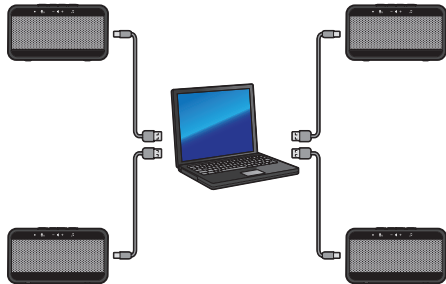


brother®


VT-Multi Guide

Introduction

Installing the VT-Multi driver lets you connect more than one VT-1000 for use with audio communication applications such as OmniJoin. You can connect up to 4 VT-1000 devices at the same time. Connecting more than one VT-1000 offers improved audio coverage in larger spaces and in larger group meetings. For OmniJoin please visit <http://www.brother.com/product/webconferencing>



[Note]

- Please connect all VT-1000 units to individual USB ports on your computer. Do not connect the units to a USB hub.
- Please do not connect more than 4 VT-1000 devices. Any additional VT-1000 devices attached will not function, and may cause audio problems.
- Please refer to the VT-1000 User's Guide for more detailed operation instructions.
- To avoid interference, keep a distance of 1m or more between each VT-1000.
- Please make sure that the presentation mode indicator  is off, otherwise audio problems can occur.

[System Requirements]

| | |
|-----|---|
| OS | Windows® XP SP3 32bit (Installation of .NET framework 3.5 is required) Windows Vista® 32/64bit Windows® 7 32/64bit Windows® 8 32/64bit |
| CPU | Intel® Core™ 2 Quad, Intel® Core™ i3, Intel® Core™ i5, Intel® Core™ i7 |
| RAM | 4 GB or more |
| HDD | 100 MB of available space |

- Please note: Some applications and operating environments can interrupt audio.
- Only the operating systems shown are supported.

Installation

- Window® 7 is shown here as an example. The instructions may vary depending on the Windows® OS version.
- Please make sure you are logged in with administrator rights.
- If you have connected a VT-1000 to your computer, please disconnect it before the installation.
- If there are any applications running, close them.
- If the **User Account Control** prompt is displayed, click **Continue**.
- If the **Windows® Security** alert prompt is displayed, check **Always trust software from "Brother Industries, ltd** and click **Install**.

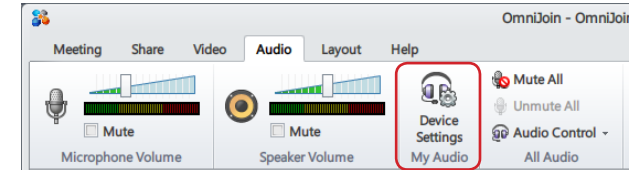
1. Download VT-Multi Driver from Brother Solutions Center at <http://solutions.brother.com>
2. Double-click the download file to start the installation process.
3. When the setup wizard screen appears, click **Next**. Follow the on-screen instructions.
4. After finishing the installation, restart your computer.

Using VT-Multi

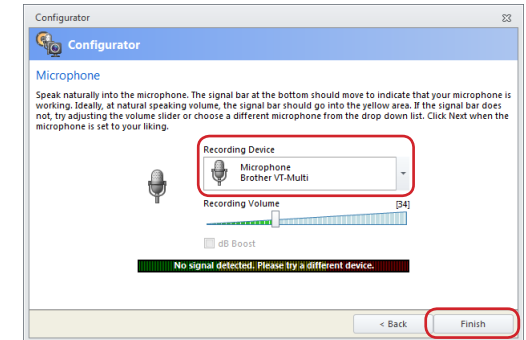
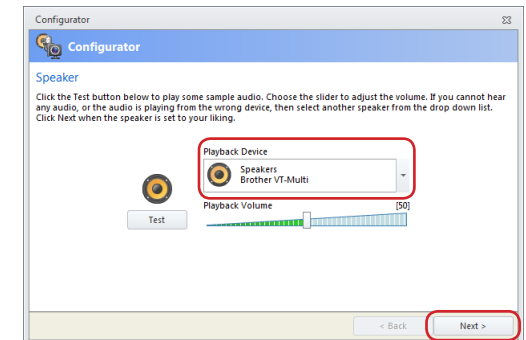
- Please connect the VT-1000 devices to your computer before starting an OmniJoin meeting, or opening your audio communication application.

Using with OmniJoin

1. Select the **Audio** tab, then click **Device Settings**.



2. Select VT-Multi in **Playback Device** and click **Next**, then select VT-Multi in **Recording Device**, and then click **Finish** to save the settings.



Please make sure that VT-Multi is selected for both Playback Device and Recording Device.

Using with other applications

- Select VT-Multi as the speaker output and microphone input in the audio settings of your application.
- Please refer to the documentation for your application for further information.

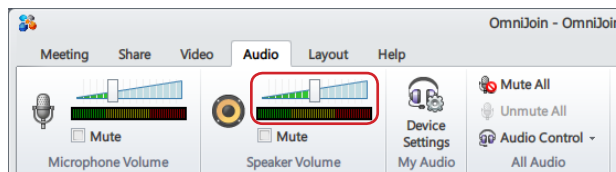
Adjust the Volume Setting for all devices

Make sure you have followed the instructions for “Using VT-Multi” and set VT-Multi as your audio device in OmniJoin (or other audio application).

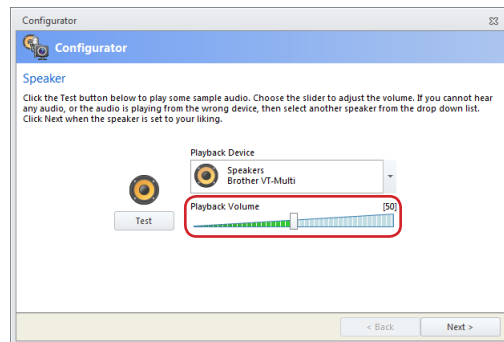
For OmniJoin

Speaker

- Select the **Audio** tab. Use the slider to adjust the Speaker Volume for VT-Multi.

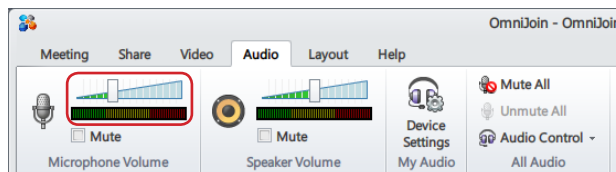


- You can also adjust the Playback Volume slider on the Speaker page in **Device Settings**.

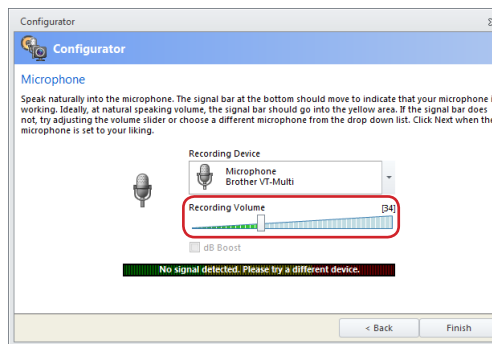


Microphone

- Select the **Audio** tab. Use the slider to adjust the Microphone Volume for VT-Multi.



- You can also adjust the Recording Volume slider on the Microphone page in **Device Settings**.



For other applications

- Adjust the volume using your application settings. Please refer to the documentation for your application for further information.
- You can also change the volume using the **Sound** property in **Control Panel**.

Adjust the Volume Setting for individual devices

Press the volume up/down button on the VT-1000 you would like to adjust.

[Note]

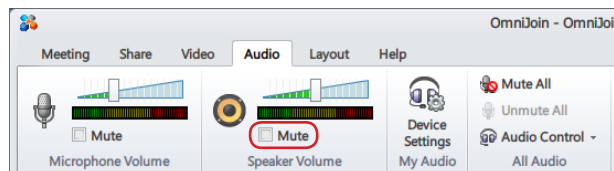
If you adjust volume in your application after changing volume on the VT-1000 device, any individual volume settings will be cancelled. The volume for all devices will be changed to the setting in your application.

Mute Audio

For OmniJoin

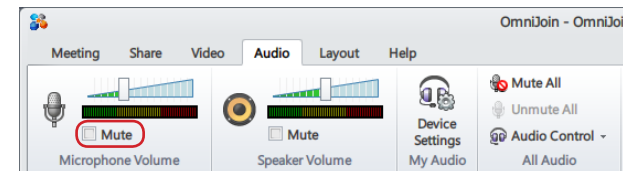
Speaker

Select the **Audio** tab. Click the **mute** icon in **Speaker Volume**.



Microphone

- Select the **Audio** tab. Click the **mute** icon in **Microphone Volume**.



For other applications

- Mute the volume using the settings in your application. Please refer to the documentation for your application for further information.
- You can also change the volume using the **Sound** property in **Control Panel**.

[Note]

If you mute the volume in your application after changing volume on an individual VT-1000 device, any individual volume settings will be cancelled. The volume for all devices will be changed to the setting in your application.

[Memo]

You can mute individual VT-1000 devices by pressing the mute button on the device.

Microsoft and Windows are registered trademarks of Microsoft Corporation in the United States and/or other countries. Intel and Intel Core are registered trademarks or trademarks of Intel Corporation in the United States and/or other countries. Any trade names and product names of companies appearing on Brother products, related documents and any other materials are all trademarks or registered trademarks of those respective companies.

© 2013 Brother Industries, Ltd. All rights reserved.