

Software Installation Guide

English

Printed in China
LAB979001



Introduction

Features

P-touch Editor	Makes it easy for anyone to create a wide variety of custom labels in complex layouts by using fonts, templates, and clip art.
Printer Driver	Lets you transfer label designs and graphics to the connected P-touch labeller when using P-touch Editor on your PC.

CD-ROM Precautions

- Do not scratch the CD-ROM.
- Do not subject the CD-ROM to extremely high or extremely low temperatures.
- Do not put heavy objects on the CD-ROM or apply force to the CD-ROM.
- The software contained on the CD-ROM is meant for use with your purchased machine only.
It may be installed on multiple PCs for use at an office, etc.

System Requirements

Before installation, check that your system configuration meets the following requirements.

Operating system	Microsoft® Windows® XP / Windows Vista® / Windows® 7
Memory	Windows® XP: 128 MB or more Windows Vista®: 512 MB or more Windows® 7: 1 GB (32-bit) or 2 GB (64-bit) or more
Hard disk	Disc space more than 70 MB
Interface	USB Port (USB Specification 1.1 or 2.0 protocol)
Monitor	SVGA High Color graphics support or higher
Other	CD-ROM drive for installation

Microsoft, Windows and Windows Vista are registered trademarks of Microsoft Corporation, USA.
The names of other software or products used in this document are trademarks or registered trademarks of the respective companies that developed them.

Installing the Software and Printer Driver

Installing the P-touch Editor and Printer Driver

The procedure for installing the software varies depending on the OS of the computer. Installation procedure is subject to change without notice.



- Do not connect the printer to the computer until directed to do so.**
- The installation procedure may change depending on the Operating System on your PC. Windows Vista® is shown here as an example.
- For details of the software, see the "Software User's Guide" (PDF).
- You can find the "Software User's Guide" (PDF) by clicking [Start] - [All Programs] - [Brother P-touch] - [Manuals] - [P-touch] - [Software User's Guide].

1 Start the computer and put the CD-ROM into the CD-ROM drive.

2 Select the desired language, and click the type of setup you prefer.

Standard: All features (P-touch Editor and the Printer driver) will be installed (default).

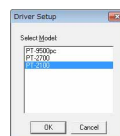
Custom: You can specify which features to install. Recommended for advanced users.



3 Read the license agreement carefully. If you agree with the terms and conditions of the license agreement, click [Yes] to continue the installation. Follow the on-screen instructions.

4 Select the Microsoft® Office application(s) you would like to use the Add-In functions with, and click [Next]. (The Add-In function will let you create labels directly from your Microsoft® Office applications.) Follow the on-screen instructions.

5 Select the desired model, and then click [OK]. Follow the on-screen instructions of the driver installation.



6 When instructed, connect your printer to the computer by using the USB cable, and then turn on the printer.

7 Once the printer is detected, the driver will automatically be installed.

8 When instructed to register your printer online, select a registration method and click [Next]. If you have selected to register the product online, your default internet browser will be launched in a new window. Follow the instructions to register your printer.

9 Click [Finish]. The software installation is now complete. Restart your computer if you are instructed to do so.

10 Start the software. Click [Start] - [All Programs] - [Brother P-touch] - [P-touch Editor 5.0] to start P-touch Editor 5.0.

Uninstalling the Software and Printer Driver

The uninstall procedure for P-touch Editor differs depending on the operating system being used. Please read "PT-XXXX" as your printer name in the following steps.

Uninstalling P-touch Editor

1 ▶ **For Windows® XP**

From [Control Panel], go to [Add or Remove Programs]. The [Add or Remove Programs] dialog box appears.

▶ **For Windows Vista® / Windows® 7**

From [Control Panel], go to [Programs] and open [Programs and Features].

The [Uninstall or change a program] dialog box appears.

2 Choose "Brother P-touch Editor 5.0", and click [Remove (XP) / Uninstall (Windows Vista® / Windows® 7)].

3 Click [OK].

The uninstall operation starts. After the software is removed from your computer, the [Maintenance Complete] dialog box appears.

4 Close the [Add or Remove Programs (XP) / Programs and Features (Windows Vista® / Windows® 7)] dialog box.

P-touch Editor has been uninstalled.

Uninstalling the Printer Driver

1 Turn off the printer.

2 ▶ **For Windows® XP**

Click the "Start" button, go to [Printers and Faxes] window.

▶ **For Windows Vista®**

From [Control Panel], go to [Hardware and Sound] and open [Printers].

▶ **For Windows® 7**

Click [Start] button, go to [Devices and Printers].



For details, see Windows® Help.

3 ▶ **For Windows® XP**

Choose "Brother PT-XXXX", and click [File] - [Delete].

▶ **For Windows Vista® / Windows® 7**

Choose "Brother PT-XXXX", right click on the icon, and then click [Delete] (Windows Vista®) / [Remove device] (Windows® 7).

4 ▶ **For Windows® XP**

Go to [File] - [Server Properties].

▶ **For Windows Vista®**

In the [Printers] window, right click and go to [Run as administrator] - [Server Properties...]. If the authorization confirmation dialog box appears, click [Continue]. If the [User Account Control] dialog box appears, enter the password and click [OK].

▶ **For Windows® 7**

Choose [Fax] or [Microsoft XPS Document Writer] in the [Devices and Printers] window, and then click [Print server properties], which appears in the menu bar.

5 ▶ **For Windows® XP**

Click the [Drivers] tab and choose "Brother PT-XXXX". Then, click [Remove].

▶ **For Windows Vista®**

Click the [Drivers] tab and choose "Brother PT-XXXX". Then, click [Remove...].

▶ **For Windows® 7**

Click the [Drivers] tab, and then click [Change Driver Settings]. (If a User Account Control message appears, type in the password, and then click [OK].) Choose "Brother PT-XXXX", and then click [Remove...].

6 ▶ **For Windows® XP**

Now, go to step 7.

▶ **For Windows Vista® / Windows® 7**

Choose [Remove driver and driver package] and click [OK].

7 Close the [Print Server Properties] window. The printer driver has been uninstalled.

How To Use the P-touch Editor Help

Starting P-touch Editor Help

Detailed instructions to create labels with the software is described in Help. The printer names in the following screens may differ from your purchased printer name.

Starting from Start button

1 Click [Start] - [All Programs] - [Brother P-touch] - [P-touch Editor 5.0].

2 In the [New/Open] dialog box, click [Help-How To].

