

Introduction

With your new Brother P-touch labeler, you can create a wide variety of custom, self-adhesive labels. This labeler uses Brother "M" Series tapes in 9mm (0.35") and 12mm (0.47") widths. "M" Series tape cassettes are available in many colors and sizes. Visit www.brother.com for a complete list of tapes compatible with your machine.

Read this manual carefully before starting and keep the manual in a handy place for future reference. The contents of this guide and the specifications of this product are subject to change without notice.

Safety Precautions

Warning

Follow these guidelines to avoid the risk of fire, burn, injury, electric shock, damage, overheating, abnormal odors or smoking.

- Do not use the machine in places of high humidity such as bathrooms.
Do not swallow the cutter stopper.
Do not get the machine wet, such as by handling it with wet hands or spilling beverages on it.
Do not disassemble or modify the P-touch labeler/batteries.

Caution

Follow these guidelines to avoid personal injury, liquid leakage, burn and heat.

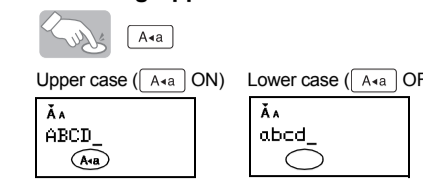
- Do not touch the edge of the cutter near the print head.
Remove the batteries if you do not intend to use P-touch labeler for an extended period of time.
When power is disconnected for more than three minutes, all text, format settings and any text files stored in the memory will be cleared.

General Precautions

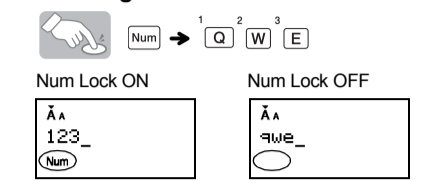
- Depending on the location, material, and environmental conditions, the label may unpeel or become irremovable, the color of the label may change or be transferred to other objects.
Use only Brother M tapes with this machine. Do not use tapes that do not have the M mark.
Only use a soft, dry cloth to clean the labeler; never use alcohol or other organic solvents.

Entering Text and Symbols

Switching Upper Case/Lower Case



Entering Numbers



Making a Two Line Label

- Enter the text for the first line and press [Enter].
Enter the text for the second line and press [Enter].

- Do not press [Enter] after the second line; otherwise "Line Limit!" error message will appear.
Use either 9mm (0.35") or 12mm (0.47") wide tape for two line text.

Entering Accented Characters

Table with 2 columns: Accented Characters and Accented Characters, showing various accented letters like A, C, D, E, G, I, K, L, N, O, R, S, T, U, Y, Z.

- To cancel operations, press [Esc].
The order of accented characters differs by the selected LCD language.

To Clear

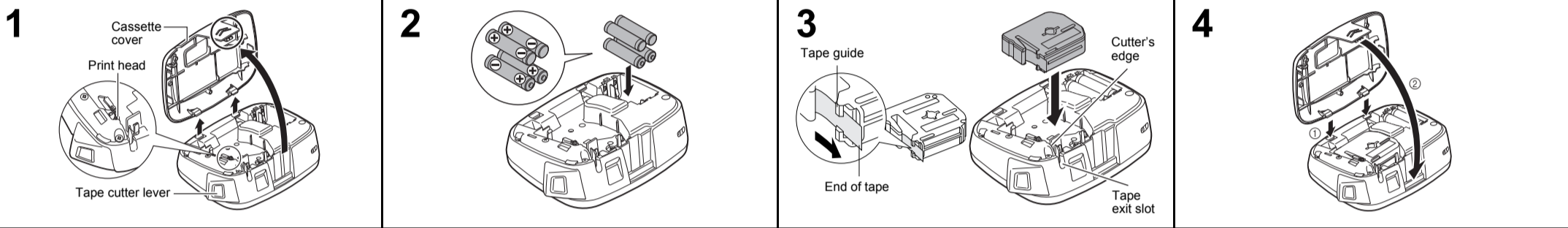
By pressing [Clear], the letters will be deleted one by one.

NOTE section detailing keyboard shortcuts for deleting text and settings (e.g., [F]+[Y] for all text, [F]+[A] for text only).

Entering Symbols

Complex-Block showing keyboard shortcuts for entering symbols like @, #, %, etc., and a table of symbols displayed on the LCD.

Power Supply and Tape Cassette



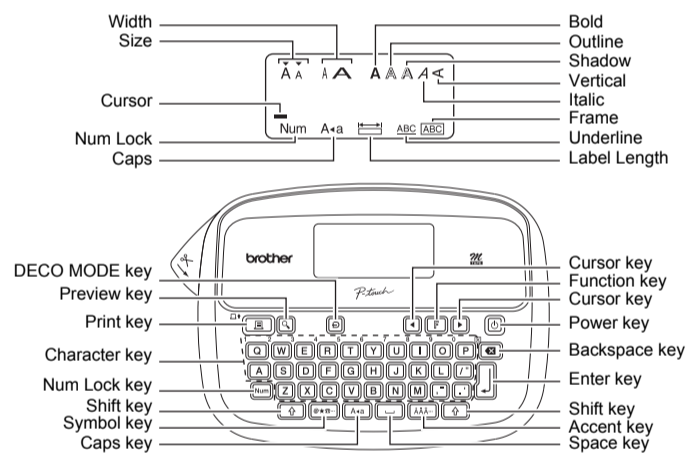
Remove the cassette cover by pressing the above indicated area. If a tape cassette is already installed, remove it by pulling it straight up. Also, if batteries are already installed, remove them.

Insert four new AAA alkaline batteries (LR03), making sure that their poles point in the correct directions. Always replace all four batteries at the same time using brand new ones.

Insert a tape cassette, making sure that it snaps into place. Make sure that the end of the tape feeds under the tape guides.

Insert the two hooks at the bottom of the cassette cover into the slots on the machine. After you have installed the tape, feed the tape (see "Feeding") once and then push in the tape cutter lever to cut the tape.

LCD Display & Keyboard



NOTE: The LCD shows one row of 12 characters; however, you can enter up to 80 characters in length.

Initial Settings

- 1 Turn on your machine. Supply power by using four AAA batteries, and then press [Power].
2 Set the language. The default setting is [English].
3 Set the unit of measurement. The default setting is [mm].

Specifications

Dimensions: Approx. 156 x 111 x 66mm
Weight: Approx. 250 g (0.6 lb.)
Power supply: Four AAA alkaline batteries (LR03)
Tape cassette: Brother M tape 9mm (0.35"), 12mm (0.47")

Troubleshooting

Table with 2 columns: Error message and Cause/Remedy, listing errors like Low Battery!, Full!, No Text!, Line Limit!, Invalid!, Text Limit!, and Cooling XXX.

What to do when...

Table with 2 columns: Problem and Solution, detailing solutions for issues like blank display, no print, setting cleared, blank horizontal line, machine locked up, power turns off, tape does not feed, and text/format settings need clearing.

Advertisement for Brother support services, including website, live chat, Facebook, and Twitter.

Designing Labels

- 1 Press [F], use [Left/Right] to select a function under column [A], and then press [Enter].
2 Use [Left/Right] to select a setting listed under column [B], and then press [Enter].

Table with 4 columns: Design, [A], [B], and Label image, showing various label designs and their corresponding settings.

*1 Default setting. To return to the default setting, press [Clear].
*2 You can select the length by entering the length with the Number Keys [0-9]. To return to [Auto], press [Clear].

Printing Labels

- Text Preview: You can preview the text before printing.
Feeding (Tape Feed): The machine will feed 25mm (1.0") of tape, which may be needed when installing a new tape cassette.
Printing: To prevent damage to the tape, do not touch the cutter lever while the message "Printing..." or "Feeding..." is displayed.

Making Copies

You can print up to 9 copies of each label. To cancel operations, press [Esc].

To Clear

By pressing [Clear], the letters will be deleted one by one.

Removing the Label Backing

This machine is equipped with a peeler that allows you to easily remove the backing from labels. Insert the label, with the printed surface facing down, as far as possible into the built-in peeler.

Resetting the P-touch

- 1 Press [Power] to turn off the power.
2 While holding down [Up] and [Right], press [Power] to turn on the power.
3 Release [Power], and then release [Up] and [Right].

DECO MODE

This function allows you to create unique labels by using some built-in templates. You can choose from 8 types of templates.

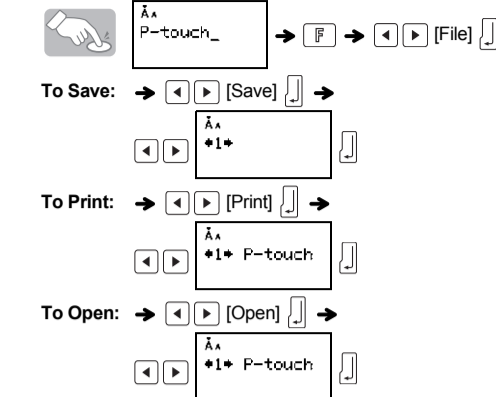
Table with 3 columns: Design, Label Image, and Cooling, showing 8 different Deco Mode templates.

Example of using Deco Mode: Design 8, showing how to set label length and units.

- NOTE: Some Deco Mode formats may require cooling. To cancel operations, press [Esc]. Symbols surrounded by a box in the Basic table are available in DECO MODE.

Saving Label Files

Memory (F + U): You can save your original labels on to your machine. Up to three labels can be saved and recalled for printing at a later time.



NOTE: If you try to store a label when there is already a label stored to that number, a message "Overwrite?" will appear. Press [Enter] to save your new label. Press [Esc] to cancel.

Symbols

Large table of symbols categorized by column (01-18) and row (01-18), including basic symbols, mathematical symbols, and pictographs.

Pictograph table showing various icons arranged in columns 1-7 and rows A-L.

- To display the next group, press [F]+[U].
To cancel operations, press [Esc].
Symbols surrounded by a box in the Basic table are available in DECO MODE.

Printing the Pictograph List: Press [F]+[U] to print the list of pictographs.