

# Software User's Guide

MW-145MFi  
MW-260MFi

# Introduction

## Important Notice



---

- The contents of this document and the specifications of this product are subject to change without notice.
- Brother reserves the right to make changes without notice in the specifications and materials contained herein and shall not be responsible for any damages (including consequential) caused by reliance on the materials presented, including but not limited to typographical and other errors relating to the publications.
- Screen images in this document may differ depending on your computer's operating system.
- Before using the printer, make sure you read all documents included with the printer for information about safety and proper operation.

## Symbols Used in This Guide

---

The following symbols are used throughout this guide:

 <b>Important</b>	Indicates information or directions that should be followed. Ignoring them may result in damage, or failed operations.
 <b>Note</b>	Indicates notes that provide information or directions that can help you better understand and use the product more efficiently.

## IMPORTANT NOTE

- This product is approved for use in the country of purchase only. Do not use this product outside the country of purchase as it may violate the wireless telecommunication and power regulations of that country.
- Windows Vista® in this document represents all editions of Windows Vista®.
- Windows® 7 in this document represents all editions of Windows® 7.
- Windows® 8 in this document represents all editions of Windows® 8.
- Windows® 8.1 in this document represents all editions of Windows® 8.1.
- Windows® 10 in this document represents Windows® 10 Home, Windows® 10 Pro, Windows® 10 Enterprise, Windows® 10 Education.  
Windows® 10 in this document does not represent Windows® 10 Mobile, Windows® 10 Mobile Enterprise, Windows® 10 IoT Core.

©2016 Brother Industries, Ltd. All rights reserved.

# Table of Contents

<b>1</b>	<b>Available Software</b>	<b>1</b>
<b>2</b>	<b>Printer Driver Utility</b>	<b>2</b>
	Changing the Settings .....	2
	Utility Screens.....	3
	General Tab.....	3
	Bluetooth (1) Tab.....	4
	Bluetooth (2) Tab.....	5
	Bluetooth (3) Tab.....	6
<b>3</b>	<b>Printer Setting Tool (P-touch Template Settings)</b>	<b>7</b>
	Functions of P-touch Template.....	7
	Specifying the P-touch Template Settings.....	8
	Using the Printer Setting Tool.....	8
	P-touch Template Settings Dialog Box.....	10
<b>4</b>	<b>P-touch Editor</b>	<b>12</b>
	Starting P-touch Editor.....	12
	Printing with P-touch Editor .....	14
<b>5</b>	<b>P-touch Transfer Manager &amp; P-touch Library</b>	<b>16</b>
	P-touch Transfer Manager.....	17
	Transferring the Template to P-Touch Transfer Manager .....	17
	Transferring Templates or Other Data from the Computer to the Printer via USB .....	20
	Backing up Templates or Other Data Saved in the Printer.....	24
	Deleting All the Printer Data .....	25
	P-touch Library .....	26
	Starting P-touch Library.....	26
	Opening and Editing Templates .....	27
	Printing Templates.....	28
	Searching for Templates or Other Data.....	28
<b>6</b>	<b>P-touch Transfer Express</b>	<b>30</b>
	Preparing P-touch Transfer Express .....	30
	Transferring the Template to P-Touch Transfer Manager .....	31
	Saving the Template as a Transfer Package File (.pdz).....	32
	Distributing the Transfer Package File (.pdz) and P-Touch Transfer Express to the User.....	34
	Transferring the Transfer Package File (.pdz) to Your Printer.....	35
<b>7</b>	<b>Appendix</b>	<b>38</b>
	MW-145 MFi Compatible List .....	38
	MW-260 MFi Compatible List .....	39

To connect the printer to your computer, the printer driver must be installed.

You can also use various applications and functions listed in the following table to make the most of your printer.

For more information on downloading and installing the printer driver and applications, see the *User's Guide*.

Software		Features	Page
1	Printer driver	—	2
2	Printer Setting Tool	Allows you to configure the P-touch Template settings.	7
	P-touch Template Settings	P-touch Template provides functions for inserting data from a device (such as a barcode reader connected to the printer) into text and barcode objects in layouts saved on the printer, useful for printing templates and barcodes.	
3	P-touch Editor 5.1	Allows you to design custom documents, store templates, connect to databases, and use a large library of labels and tags.	12
4	P-touch Transfer Manager *2	Allows you to transfer files created with P-touch Editor to a printer and store the files in the printer's memory. You can print them from the printer's memory without connecting to your computer.	16
5	P-touch Library *2	Allows you to use your computer to manage P-touch Template and other data. You can use P-touch Library to print templates.	16
6	P-touch Transfer Express *1	Allows you to transfer documents easily into a Brother printer via a local USB.	30

\*1 This application can be downloaded from the Brother Solutions Center website: [support.brother.com](http://support.brother.com).

\*2 This application is installed with P-touch Editor 5.1.

The following settings for this printer can be specified using the printer driver utility.

## General Settings

- Auto power-off time setting
- Command Mode

## Bluetooth Settings

- Auto sleep time
- Auto sleep/power-off time
- Power-saving
- Device
- PIN code (Password)
- Communication security settings

## Changing the Settings

### 1 Windows Vista®:

From the Start button, click **[Control Panel]** - **[Printer]**.

### Windows® 7:

From the Start button, click **[Devices and Printers]**.

### Windows® 8 / Windows® 8.1:

From the Control Panel, click **[View devices and printers]**.

### Windows® 10:

Right-click the Start button, and then click **[Control Panel]** - **[View devices and printers]**.

- 2 Right-click the icon of your printer, and then select **[Printer properties]** (**[Properties]** for Windows Vista®).
- 3 Click **[Properties...]** to the right of **[Utility...]** in the **[Device Settings]** tab.  
The **[Brother MW-xxxMFi Utility]** dialog box is displayed.
- 4 Specify each setting, referring to *Utility Screens* on page 3.  
If **[(Unknown)]** is displayed as **[Current setting]** or **[Current Time Setting]**, clicking the **[Current]** button displays the current setting.  
After changing the settings, click **[Apply]**.
- 5 Click **[Exit]**.  
The **[Brother MW-xxxMFi Utility]** dialog box closes.



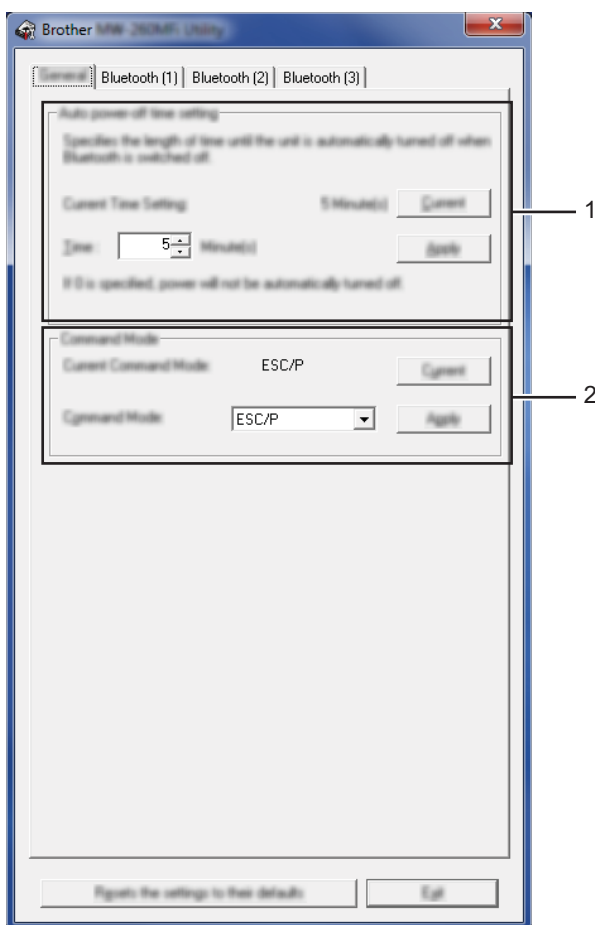
### Note

Clicking **[Resets the settings to their defaults]** resets all settings to their factory settings.

# Utility Screens

The settings in bold letters are the default settings.

## General Tab



### 1 Auto power-off time setting

Specifies the amount of time that passes before the printer turns off automatically.

If "0" is specified, the printer will not automatically turn off.

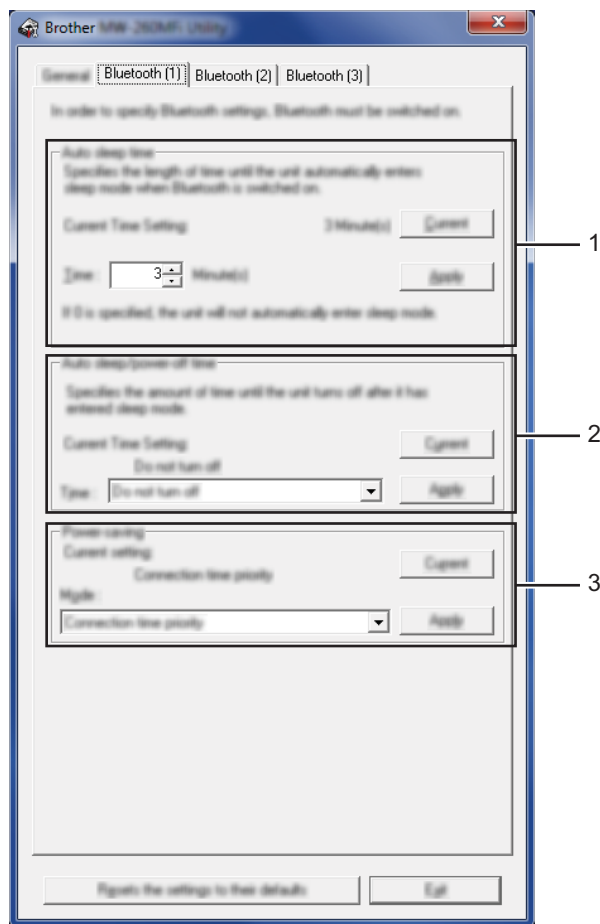
Available settings: **5 minutes**, 0 - 255 minutes

### 2 Command Mode

Specifies the printer's command format.

Available settings: [Raster], [**ESC/P**], [P-touch Template]

## Bluetooth (1) Tab



### 1 Auto sleep time

Specifies the amount of time that passes before the printer automatically enters the sleep mode when the Bluetooth switch is set to ON.

Available settings: **3 minutes**, 0 - 255 minutes

### 2 Auto sleep/power-off time

Specifies the amount of time that passes before the printer turns off after entering the sleep mode when the Bluetooth switch is set to ON.

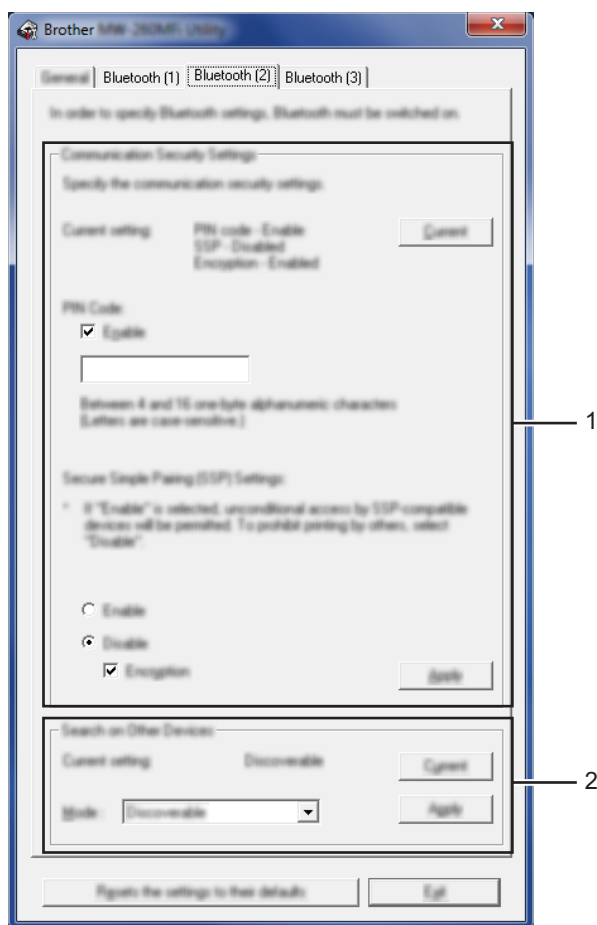
Available settings: [Immediately turn off], [10 minutes], [30 minutes], [1 hour], [3 hours], [6 hours], [9 hours], [12 hours], **[Do not turn off]**.

### 3 Power-saving

Specifies the power-saving mode.

Available settings: [Power-saving mode priority], [Standard], **[Connection time priority]**

## Bluetooth (2) Tab



### 1 Communication Security Settings

Enables or disables the PIN during communication, specifies the PIN, and enables or disables Secure Simple Pairing (SSP) when the PIN is enabled.

Available settings: (PIN code enablement) enable, disable / (PIN code) **XXXX**, 4 - 16 alphanumeric characters, (SSP) [Enable], [**Disable**] / (Encryption) enable, disable



#### Note

- Secure Simple Pairing (SSP) is one of the functions that allows you to omit entering the PIN when connecting via Bluetooth, which was adopted in Bluetooth Ver. 2.1 or later.

You can omit entering the PIN for Bluetooth connections when establishing a pairing between SSP-compatible devices.

On the other hand, a disadvantage of SSP is that the connection is not so highly secured because you can establish a pairing between SSP-compatible devices without restrictions. If you do not want to allow printing from other devices, set SSP to [Disable].

If you connect your printer to a device that is not compatible with SSP or one with SSP set to invalid, you must establish the pairing using the PIN and encryption.

- Depending on the version of Bluetooth that you are using or other conditions, you may not be able to change the SSP, encryption, and PIN settings.

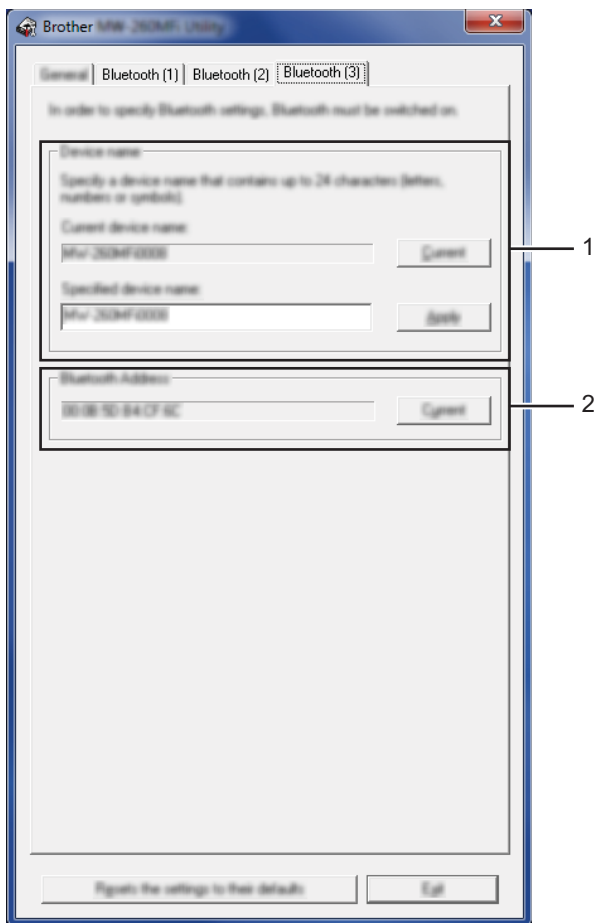
## 2 Search on Other Devices

Specifies whether or not to allow searches from other devices.

If the printer cannot be found, specify this setting from the computer.

Available settings: **[Discoverable]**, **[Undiscoverable]**

## Bluetooth (3) Tab



### 1 Device name

Changes the device name.

The factory setting is "MW-xxxx\*\*\*\*", where "xxxx" is your model name and "\*\*\*\*" is the last four digits of the product serial number.

Available setting: 1 - 24 alphanumeric characters or symbols

### 2 Bluetooth Address

Retrieves and displays the Bluetooth address of the selected printer.

# Printer Setting Tool (P-touch Template Settings)

Using P-touch Template Setting Tool in the "Printer Setting Tool", you can specify the printer's P-touch Template settings from a WindowsR PC.

P-touch Template mode provides functions for inserting data from a device (such as a barcode reader connected to the printer) into text and barcode objects in layouts saved on the printer, useful for printing templates and barcodes.

For the details on P-touch Template, see the P-touch Template Manual/Command Reference (English only). You can download the latest versions from the Brother Solutions Center website.

[support.brother.com](http://support.brother.com)

## Functions of P-touch Template

The following are the P-touch Template functions:

### Basic operations

#### ■ Preset template printing

If frequently used templates are stored in the printer, they can be reprinted by simply scanning the barcode for each template.

#### ■ Barcode printing

A barcode scanned with the barcode reader can be printed with the protocol and size of a previously created template.



### Note

If a command reference is used, see the *P-touch Template Manual/Command Reference* (English only). You can download the latest versions from the Brother Solutions Center website.

[support.brother.com](http://support.brother.com)

Select the product, and then select **[Manuals]**.



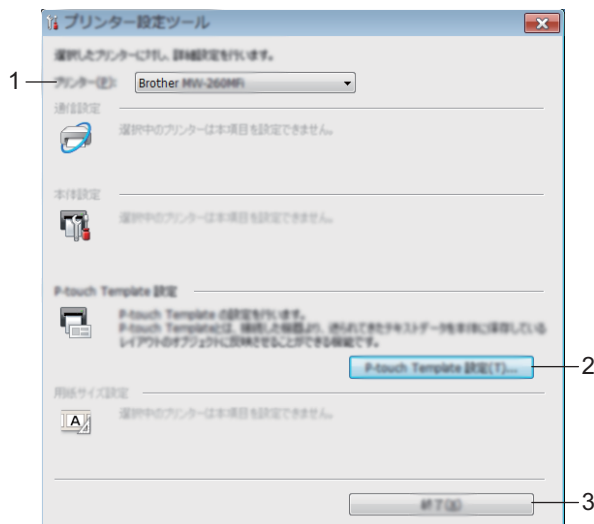
### Important

The P-touch Template Setting Tool can be configured only via USB.

# Specifying the P-touch Template Settings

## Using the Printer Setting Tool

- 1 Connect the printer you want to configure to the computer.
- 2 For Windows Vista® / Windows® 7:  
From the Start menu, click **[All Programs] - [Brother] - [Label & Mobile Printer] - [Printer Setting Tool]**.  
  
For Windows® 8 / Windows® 8.1:  
Click the **[Printer Setting Tool]** icon on the **[Apps]** screen.  
  
For Windows® 10:  
From the Start button, select all applications, and then click **[Brother] - [Label & Mobile Printer] - [Printer Setting Tool]**.  
  
The main window appears.



### 1 Printer

Lists the connected printers.

### 2 P-touch Template Settings

Specifies P-touch Template settings.

For more information on P-touch Template, download the *P-touch Template Manual/Command Reference* (English only) from the Brother Solutions Center website: [support.brother.com](http://support.brother.com).

### 3 Exit

Closes the window.

- 3 Check that the printer you want to configure appears beside [Printer]. If a different printer appears, select the printer you want from the drop-down list.



**Note**

If only one printer is connected, it is unnecessary to make a selection since only that printer is available.

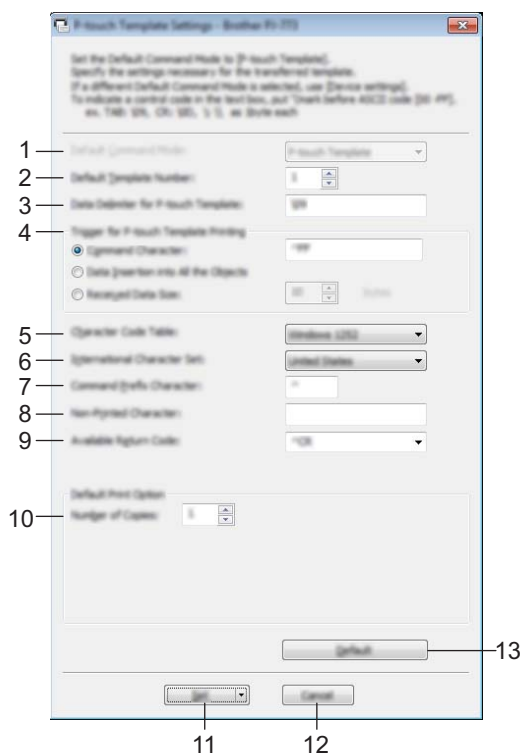
- 4 Select [P-touch Template Settings], and then specify or change the settings in the [P-touch Template Settings] dialog box.  
For more information on the [P-touch Template Settings] dialog box, see *P-touch Template Settings Dialog Box* on page 10.
- 5 Click [**Apply**] - [**Exit**] in the settings dialog box to apply the settings to the printer.
- 6 Click [**Exit**] in the main window to finish specifying settings.



**Important**

Use the “Printer Setting Tool” to configure the printer only when the printer is in standby. The printer may malfunction if you attempt to configure it while it is handling a job.

## P-touch Template Settings Dialog Box



### 1 Default Command Mode

Select one of the following three command modes.

Available settings: **[P-touch Template]**, **[ESC/P]**, **[Raster]**

### 2 Default Template Number

Specifies a template number to select as default when the printer is turned on.

However, if a template is not to be transferred to the printer, do not specify a template number.

### 3 Data Delimiter for P-touch Template

A symbol used to indicate when to move to the next object in the data being sent. Between 1 and 20 characters can be specified.

### 4 Trigger for P-touch Template Printing

You can specify a trigger to begin printing from a number of options.

**[Command Character]**: Printing starts when the command character specified here is received.

**[Data Insertion into All the Objects]**: Printing starts when the delimiter for the last object is received.

**[Received Data Size]**: Printing starts when the number of characters specified here is received. However, delimiters are not counted in the number of characters.

### 5 Character Code Table

Select one of the following three character code sets.

Available settings: **[Windows 1252]**, **[Windows 1250 Eastern Europe]**, **[Brother standard]**

## 6 International Character Set

Lists countries for the character set.

Available settings: [United States], [France], [Germany], [Britain], [Denmark], [Sweden], [Italy], [Spain], [Japan], [Norway], [Denmark II], [Spain II], [Latin America], [Korea], [Legal]

The following 12 codes are switched depending on the country selected from the list above:

23h 24h 40h 5Bh 5Ch 5Dh 5Eh 60h 7Bh 7Ch 7Dh 7Eh

For switched characters, see the *P-touch Template Manual/Command Reference* (which can be downloaded from the Brother Solutions Center website) (English only).

## 7 Command Prefix Character

Specifies the prefix character code, which identifies commands used in P-touch Template mode.

## 8 Non-Printed Character

Characters specified here are not printed when data is received. Specify 1 to 20 characters.

## 9 Available Return Code

The line feed code is used when feeding data to indicate that the following data should be moved to the next line in a text object. One of the following four line feed codes can be selected, or 1 to 20 characters can be specified as the line feed code.

Available settings: [^CR], [\0D\0A], [\0A], [\0D]

## 10 Number of Copies

Sets the number of copies. A number between 1 and 99 can be specified.

## 11 Set

Applies the settings in the dialog box to the printer.

Clicking ▼ to the right of this button and selecting [Save to Command File] from the drop-down list saves the settings as a file.

## 12 Cancel

Cancels the settings and closes the dialog box. The settings will remain unchanged.

## 13 Default

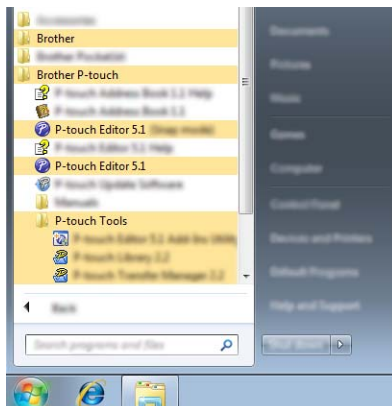
Returns the settings in the dialog box to the factory settings.

## Starting P-touch Editor

### 1 For Windows Vista® / Windows® 7:

From the Start button, click **[All Programs]-[Brother P-touch]-[P-touch Editor 5.1]**.

When P-touch Editor starts, select whether you want to create a new layout or open an existing layout.



### For Windows® 8/ Windows® 8.1:

Click **[P-touch Editor 5.1]** on the **[Apps]** screen or double-click **[P-touch Editor 5.1]** on the desktop.

When P-touch Editor starts, select whether you want to create a new layout or open an existing layout.

### For Windows® 10:

From the Start button, select all applications and click **[P-touch Editor 5.1]** under **[Brother P-touch]**, or double-click **[P-touch Editor 5.1]** on the desktop.

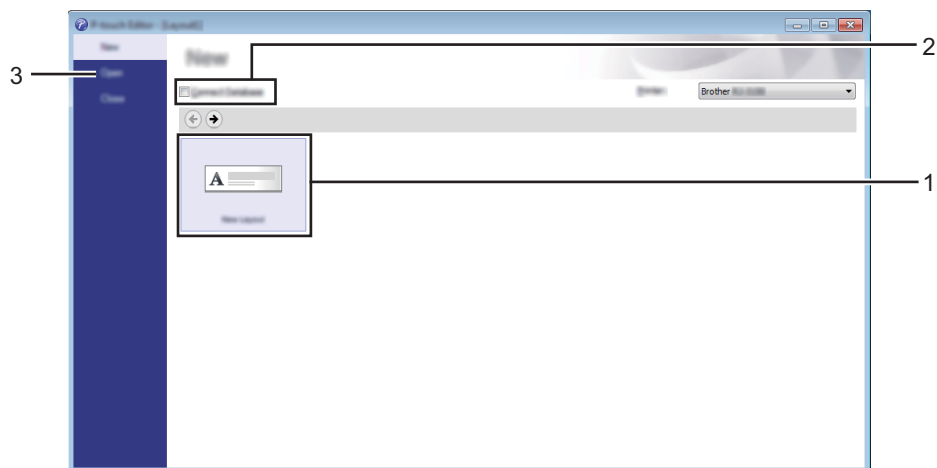
When P-touch Editor starts, select whether you want to create a new layout or open an existing layout.



### Note

- You can also start P-touch Editor using shortcuts, if you chose to create shortcuts during installation.
  - Shortcut icon on the desktop: double-click to start P-touch Editor
  - Shortcut icon in the Quick Launch bar: click to start P-touch Editor
- To change how P-touch Editor functions when it starts, click **[Tools]-[Options]** in the P-touch Editor menu bar to display the **[Options]** dialog box. On the left side, select the **[General]** heading and then the desired setting in the **[Operations]** list box under **[Startup Settings]**. The default setting is **[Display New View]**.

- 2 Select one of the displayed options:



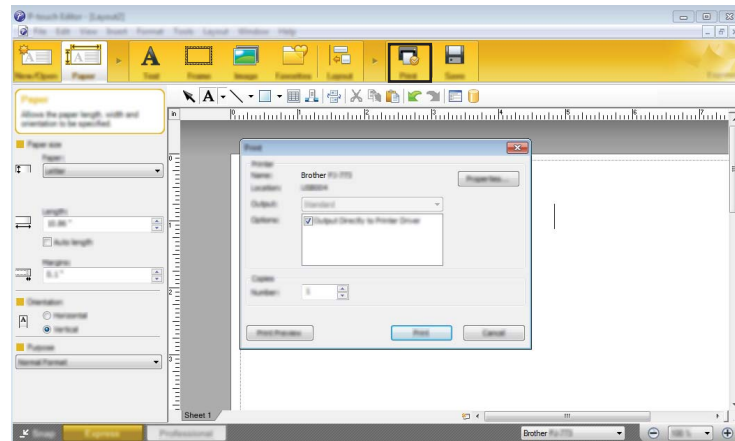
- 1 To create a new layout, click the [**New Layout**] button.
- 2 To connect a preset layout to a database, select the check box next to [**Connect Database**].
- 3 To open an existing layout, click [**Open**].

# Printing with P-touch Editor

## Express mode

This mode allows you to quickly and easily create layouts that include text and images.

The **[Express]** mode screen is explained below:

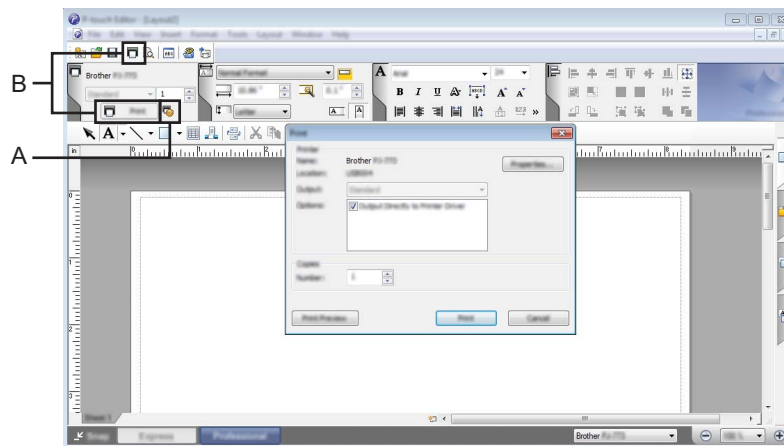


You can print by selecting **[Print]** from **[File]** in the menu bar or by clicking the **[Print]** icon. (Configure the printing settings in the **[Print]** screen before printing.)

## Professional mode

This mode allows you to create layouts using a wide-range of advanced tools and options.

The **[Professional]** mode screen is explained below:



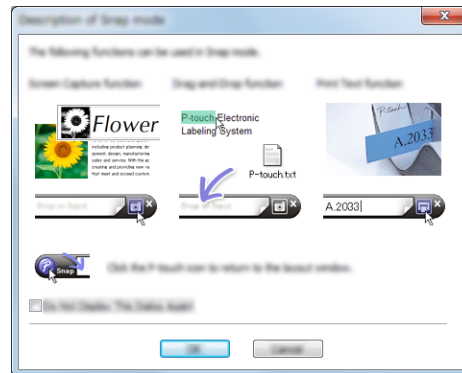
You can print by selecting **[Print]** from **[File]** in the menu bar or by clicking the **[Print]** icon (A). Configure the printing settings in the **[Print]** screen before printing.

In addition, you can click "B" to start printing without changing the printing settings.

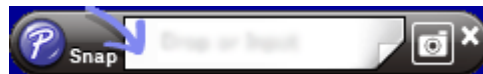
## Snap mode

This mode allows you to capture all or a portion of your computer screen display, print it as an image, and save it for future use.

- 1 Click the **[Snap]** mode selection button.  
The **[Description of Snap mode]** dialog box is displayed.



- 2 Click **[OK]**.  
The **[Snap]** mode palette is displayed.



## P-touch Transfer Manager

This program allows you to transfer templates and other data to the printer and save backups of your data on the computer.

After P-touch Transfer Manager is used to transfer data to the printer, P-touch Template is used to send text data to the printer that will be inserted into the template and printed. For more information on P-touch Template, download the *P-touch Template Manual/Command Reference* (English only) from the Brother Solutions Center website: [support.brother.com](http://support.brother.com).

[**Product Search**] - [**Manuals**]

The transfer function is needed to use P-touch Template.

## P-touch Library

This program allows you to use your computer to manage P-touch Template and other data. You can use P-touch Library to print templates.

# P-touch Transfer Manager

In order to use P-touch Transfer Manager, templates created in P-touch Editor must first be transferred to P-touch Transfer Manager.

## Transferring the Template to P-Touch Transfer Manager

---

- 1 In P-touch Editor, open the template to be transferred.
- 2 Click **[File]** - **[Transfer Template]** - **[Transfer]**.

When P-touch Transfer Manager starts, the main window is displayed.



### Note

---

The following method can also be used to start the P-touch Transfer Manager.

**For Windows Vista® / Windows® 7:**

From the Start button, click **[All Programs]**-**[Brother P-touch]**-**[P-touch Tools]**-**[P-touch Transfer Manager 2.2]**.

**For Windows® 8 / Windows® 8.1:**

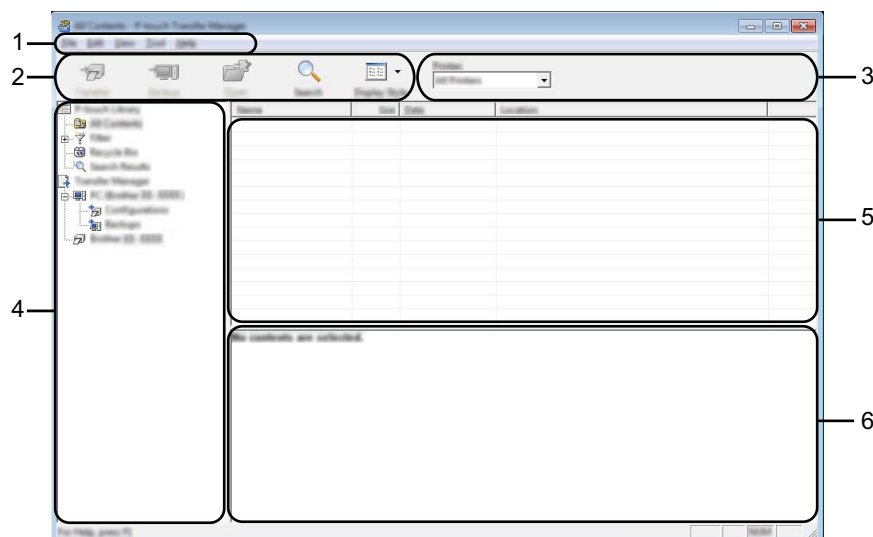
Click **[P-touch Transfer Manager 2.2]** on the **[Apps]** screen.

**For Windows® 10:**

From the Start button, select all applications, and then click **[P-touch Transfer Manager 2.2]** under **[Brother P-touch]**.

---

## Main window



### 1 Menu bar

Provides access to various commands, which are grouped under each menu title ([File], [Edit], [View], [Tool], and [Help]) according to their functions.

### 2 Toolbar

Provides access to frequently used commands.

### 3 Printer selector

Allows you to select which printer the data will be transferred to. When you select a printer, only the data that can be sent to the selected printer is displayed in the data list.

### 4 Folder list

Displays a list of folders and printers. When you select a folder, the templates in the selected folder are displayed in the template list.

If you select a printer, the current templates and other data stored in the printer are displayed.







### 5 Template list

Displays a list of templates in the selected folder.

### 6 Preview

Displays a preview of the templates in the templates list.

## Explanations of the Toolbar Icons

Icon	Button name	Function
	<b>Transfer</b> (Only for P-touch Transfer Manager)	Transfers templates and other data from the computer to the printer.
	<b>Backup</b> (Only for P-touch Transfer Manager)	Retrieves the templates and other data saved in the printer and saves it on the computer.
	<b>Open</b>	Opens the selected template.
	<b>Print</b> (Only for P-touch Library)	Prints the selected template with the printer.
	<b>Search</b>	Allows you to search for templates or other data that are registered to P-touch Library.
	<b>Display Style</b>	Changes the file display style.

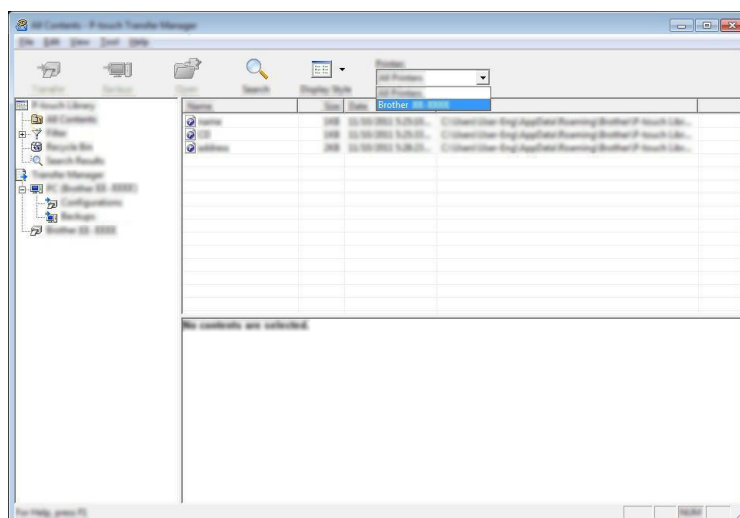
## Transferring Templates or Other Data from the Computer to the Printer via USB

Use the following procedure to transfer templates, databases and images from the computer to the printer.

### Important

Follow these instructions when the printer is connected to the computer via USB.

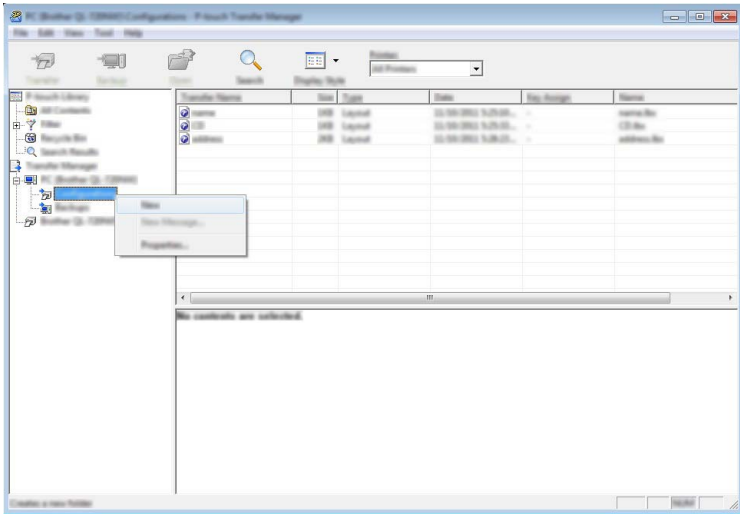
- 1 Connect the computer and the printer via USB and turn the printer on.  
The printer model name is displayed in the folder view.  
If you select a printer in the folder view, the current templates and other data stored in the printer are displayed.
- 2 Select the printer that you want to transfer the template or other data to.



### Note

Before transferring data, check that the computer and the printer are correctly connected with a USB cable and that the printer power is on.

- 3 Right-click the **[Configurations]** folder, select **[New]**, and then create a new folder.



- 4 Drag the template or other data that you want to transfer and place it in the new folder.

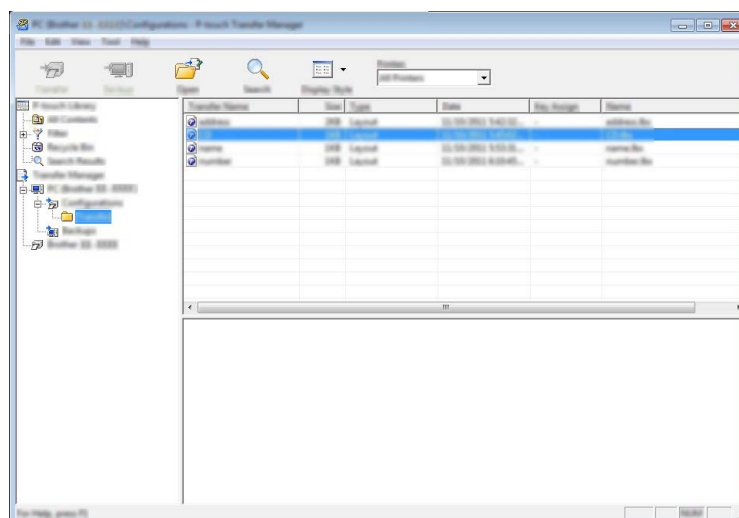
Transfer Function Specification

Data type	Maximum number of transferable items	Restriction details
Template	99	■ Each template can contain a maximum of 50 objects.

You can view the templates and other data by selecting the folder in the **[Configurations]** folder, selecting **[All Contents]** or by selecting one of the categories under **[Filter]**, such as **[Layouts]**.

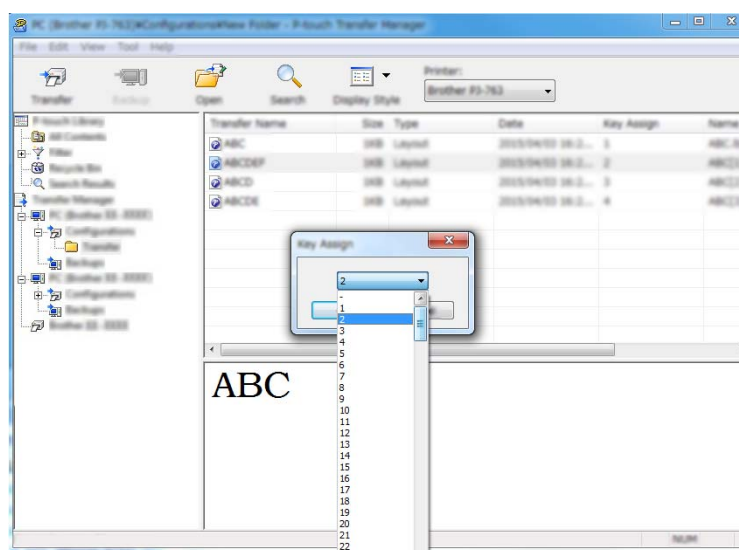
When transferring multiple templates or other data, drag all the files that you want to transfer and place them in the new folder.

Each file is assigned a key number (memory location in the printer) when it is placed in the new folder.



5

- 5 To change the key number assigned to an item, right-click the item, select **[Key Assign]**, and then select the desired key number.

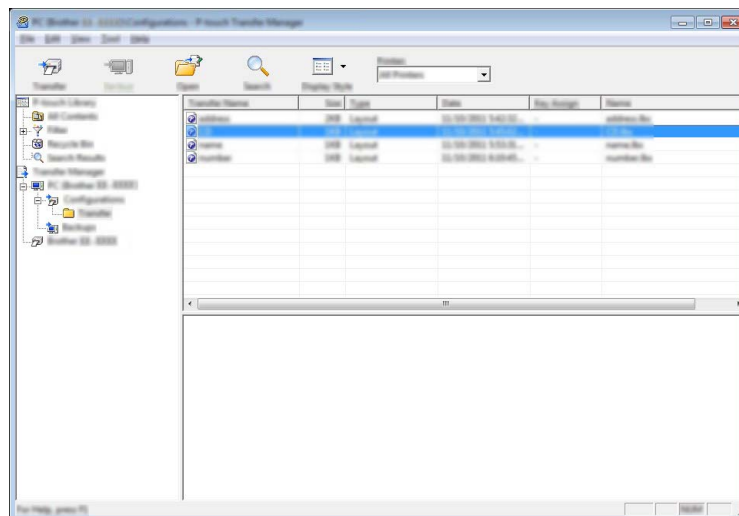


### Note

- All data transferred to the printer is assigned a key number.
- If the template or other data transferred to the printer has the same key number as another template already saved in the printer, the new template will overwrite the old one. You can confirm the templates key number assignments saved in the printer by backing up the templates or other data (see *Backing up Templates or Other Data Saved in the Printer* on page 24).
- If the printer memory is full, remove one or more templates from the printer's memory (see *Backing up Templates or Other Data Saved in the Printer* on page 24).

- 6 To change the names of templates or other data that will be transferred, click on the desired item and enter the new name. The number of characters used for the template names may be limited depending on the printer model.

- 7 Select the folder containing the templates or other data that you want to transfer, and then click **[Transfer]**. A confirmation message will be displayed.



#### Note

- You can also transfer individual items to the printer without adding them to a folder. Select the template or other data that you want to transfer, and then click **[Transfer]**.
- Multiple items and folders can be selected and transferred in one operation.

- 8 Click **[OK]**.



The selected templates, folders or other data are transferred to the printer.

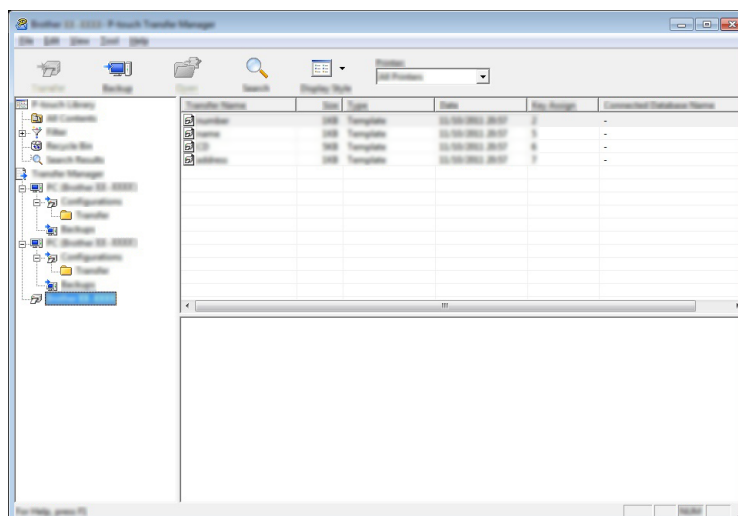
## Backing up Templates or Other Data Saved in the Printer

Use the following procedure to retrieve templates or other data saved in the printer and save it on the computer.

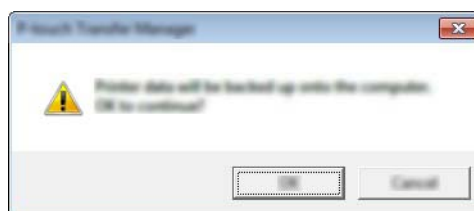
### ❗ Important

- Backed up templates or other data cannot be edited on the computer.
- Depending on the printer model, templates or other data backed up from one printer model may not be able to be transferred to another printer model.

- 1 Connect the computer and the printer and turn the printer on.  
The printer model name is displayed in the folder view.  
If you select a printer in the folder view, the current templates and other data stored in the printer are displayed.
- 2 Select the printer to back up from, and then click **[Backup]**.  
A confirmation message is displayed.



- 3 Click **[OK]**.  
A new folder is created under the printer in the folder view. The folder name is based on the date and time of the backup. All of the printer's templates and other data are transferred to the new folder and saved on the computer.



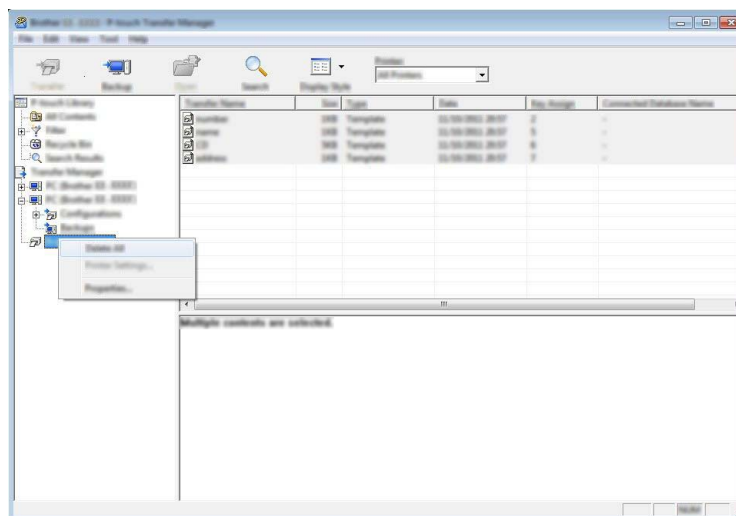
## Deleting All the Printer Data

Use the following procedure to delete all templates or other data that are saved in the printer.

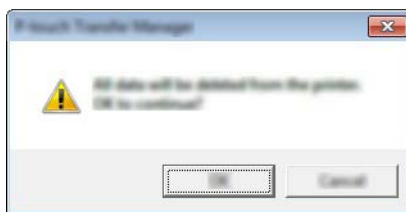
### ! Important

This feature is only available when the computer and printer are connected via USB.

- 1 Connect the computer and the printer and turn the printer's power on.  
The printer model name is displayed in the folder view.
- 2 Right-click the printer, and then select [**Delete All**].



A confirmation message is displayed.



- 3 Click [**OK**].  
All templates and other data saved in the printer is deleted.

# P-touch Library

## Starting P-touch Library

### For Windows Vista® / Windows® 7:

From the Start button, click **[All Programs]-[Brother P-touch]-[P-touch Tools]-[P-touch Library 2.2]**.

### For Windows® 8 / Windows® 8.1:

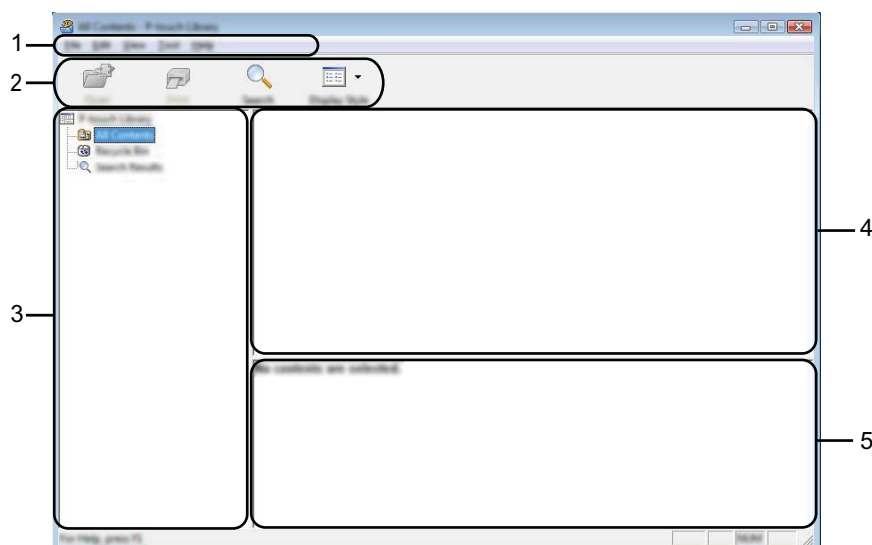
Click **[P-touch Library 2.2]** on the **[Apps]** screen.

### For Windows® 10:

From the Start button, select all applications, and then click **[P-touch Library 2.2]** under **[Brother P-touch]**.

When P-touch Library starts, the main window is displayed.

### Main window



#### 1 Menu bar

Provides access to all available commands, which are grouped under each menu title (**[File]**, **[Edit]**, **[View]**, **[Tool]**, and **[Help]**) according to their functions.

#### 2 Toolbar

Provides access to frequently used commands.

#### 3 Folder list

Displays a list of folders. When you select a folder, the templates or other data in the selected folder is displayed in the templates list.




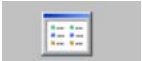
#### 4 Templates list

Displays a list of the templates or other data in the selected folder.

5 Preview

Displays a preview of the templates or other data selected in the templates list.

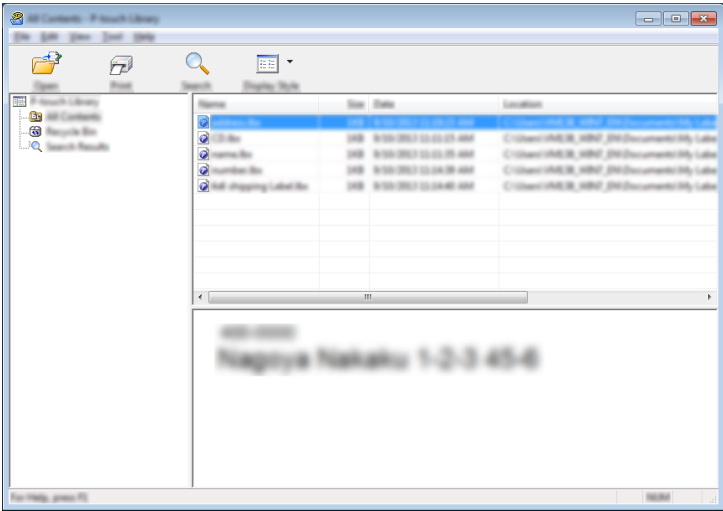
Explanations of the Toolbar Icons

Icon	Button name	Function
	Open	Opens the selected template.
	Print (Only for P-touch Library)	Prints the selected template with the printer.
	Search	Allows you to search for templates or other data that are registered to P-touch Library.
	Display Style	Changes the file display style.

5

Opening and Editing Templates

Select the template you want to open or edit, and then click **[Open]**.



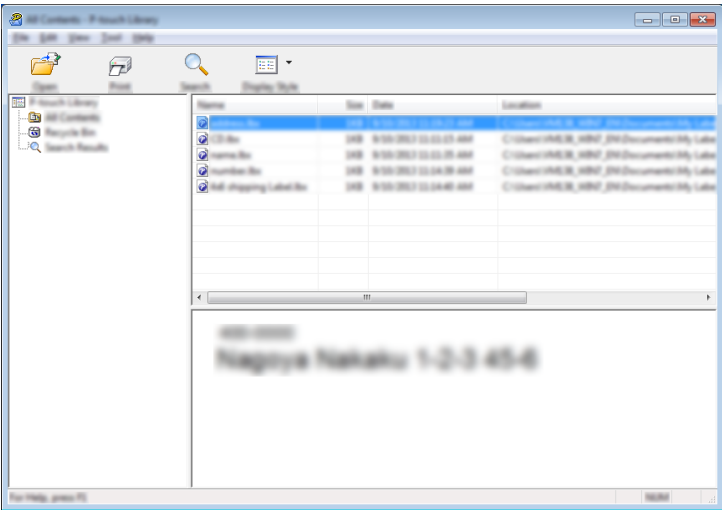
The program associated with the template will be started and you can edit the template.

 Note

The program that starts depends on the type of file you selected. For example, if you select a P-touch Template, P-touch Editor starts.

# Printing Templates

Select the template that you want to print and then click **[Print]**.

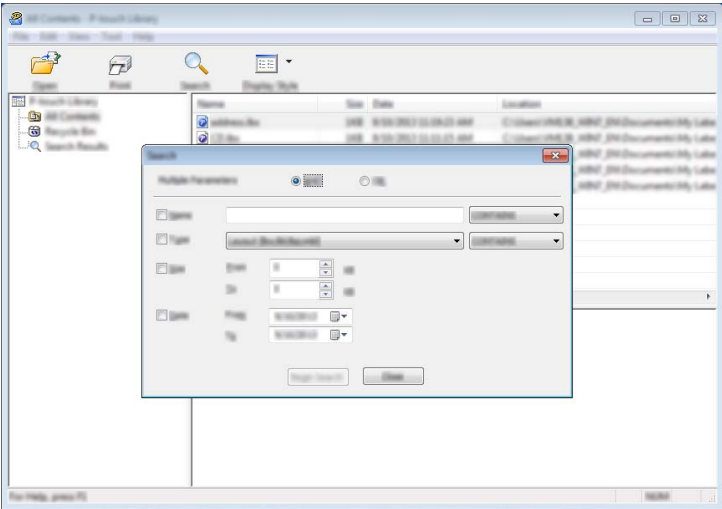


The template is printed using the connected printer.

## Searching for Templates or Other Data

You can search for templates or other data registered to P-touch Library.

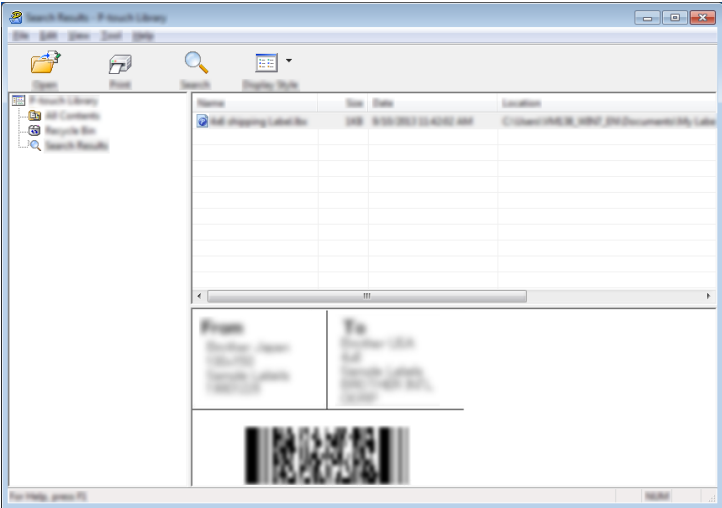
- 1 Click **[Search]**.  
The **[Search]** dialog box is displayed.



- 2 Specify the search criteria.  
The following search criteria are available:

Settings	Details
Multiple Parameters	Determines how the program searches when multiple criteria are specified. If you select <b>[AND]</b> , the program searches for files that satisfy all of the criteria. If you select <b>[OR]</b> , the program searches for files that satisfy any of the criteria.
Name	Allows you to search for a template or other data by specifying the file name.
Type	Allows you to search for a template or other data by specifying the file type.
Size	Allows you to search for a template or other data by specifying the file size.
Date	Allows you to search for a template or other data by specifying the file date.

- 3 Click **[Begin Search]**.  
The search begins.



- 4 Close the **[Search]** dialog box.  
The search results can be confirmed by clicking **[Search Results]** in the folder view.

 **Note**

You can register templates or other data to P-touch Library by dragging and dropping it into the **[All Contents]** folder or to the folder list. You can also configure P-touch Editor to register templates to P-touch Library automatically, using the following procedure:

- 1 From the P-touch Editor menu, select **[Tools]-[Options]**.
- 2 In the **[Options]** dialog box, click **[Registration Settings]** in the **[General]** tab.
- 3 Select the timing for registering templates created with P-touch Editor, and then click **[OK]**.

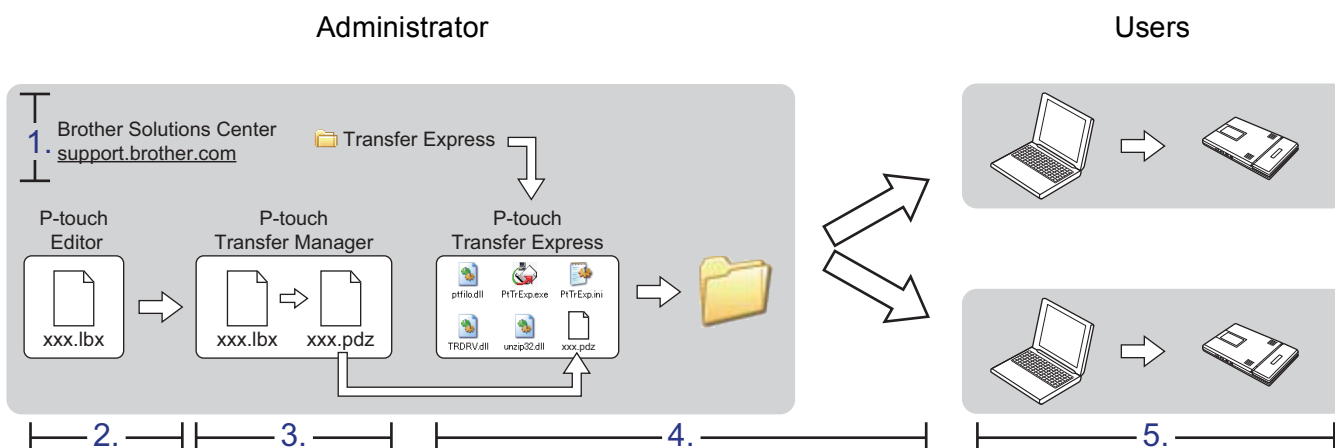
# 6

## P-touch Transfer Express

By using P-touch Transfer Express, one or more templates and a database can be easily transferred into a Brother printer via a local USB. After a template has been created by an administrator, it can be distributed together with P-touch Transfer Express to many users and easily transfer a template into each Brother printer locally.

### Important

- If the template is to be transferred as a new one, make sure you specify a **[Key Assign]** number (in P-touch Transfer Manager) that is not currently used. If the specified **[Key Assign]** number is already being used, the existing template will be overwritten with the new one.
- This function requires a USB connection.



## Preparing P-touch Transfer Express

The user must prepare P-touch Transfer Express for transferring templates to a printer.

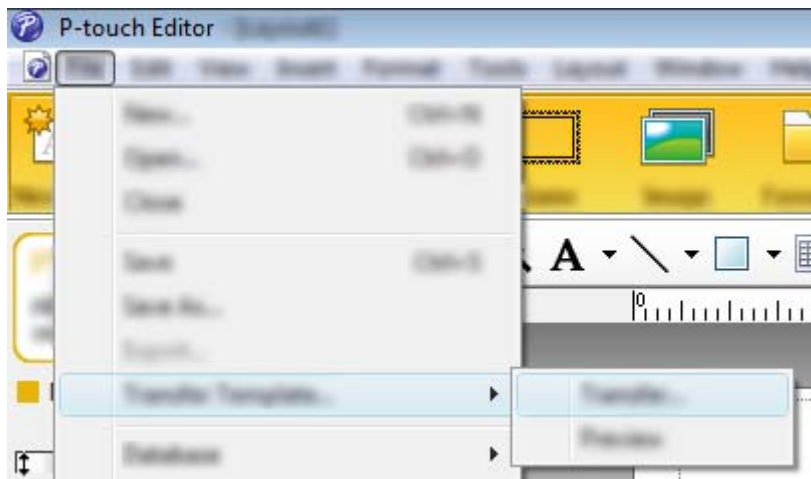
### Important

P-touch Transfer Express is only available in English.

- 1 You can download the latest P-touch Transfer Express from the following website.  
[support.brother.com](http://support.brother.com)  
**[Product Search]** - **[Downloads]**
- 2 Download Transfer Express to any location on the computer.

## Transferring the Template to P-Touch Transfer Manager

- 1 In P-touch Editor, open the template to be transferred.
- 2 Click **[File] - [Transfer Template] - [Transfer]**.



The template is transferred to P-touch Transfer Manager.  
P-touch Transfer Manager automatically starts up.



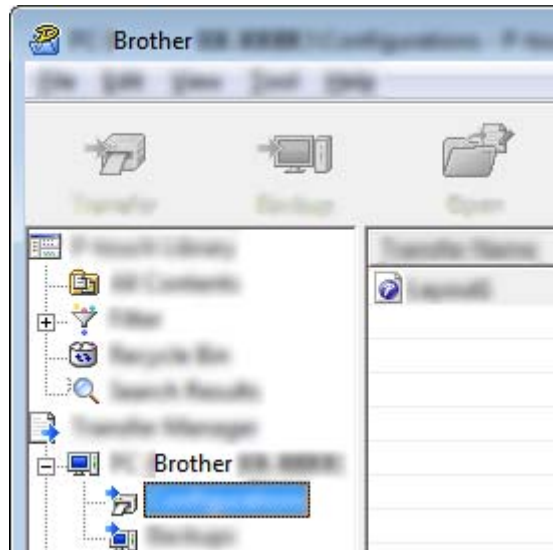
### Note

- **For Windows Vista® / Windows® 7:**  
The template can also be transferred to P-touch Transfer Manager by clicking the Start button - **[All Programs] - [Brother P-touch] - [P-touch Tools] - [P-touch Transfer Manager 2.2]** to start P-touch Transfer Manager, then dragging the .lbx file to the P-touch Transfer Manager window.
- **For Windows® 8 / Windows® 8.1:**  
The template can also be transferred to P-touch Transfer Manager by clicking **[P-touch Transfer Manager 2.2]** on the **[Apps]** screen to start P-touch Transfer Manager, then dragging the .lbx file to the P-touch Transfer Manager window.
- **For Windows® 10:**  
The template can also be transferred to P-touch Transfer Manager by clicking the Start button, then selecting all applications and clicking **[Brother P-touch] - [P-touch Transfer Manager 2.2]** to start P-touch Transfer Manager, and then dragging the .lbx file to the P-touch Transfer Manager window.

## Saving the Template as a Transfer Package File (.pdz)

In order to create a file in a format that can be used by P-touch Transfer Express, save the template as a Transfer Package file (.pdz).

- 1 In the folder view, select [Configurations].



- 2 Select the template you want to distribute.



Multiple templates can be selected.

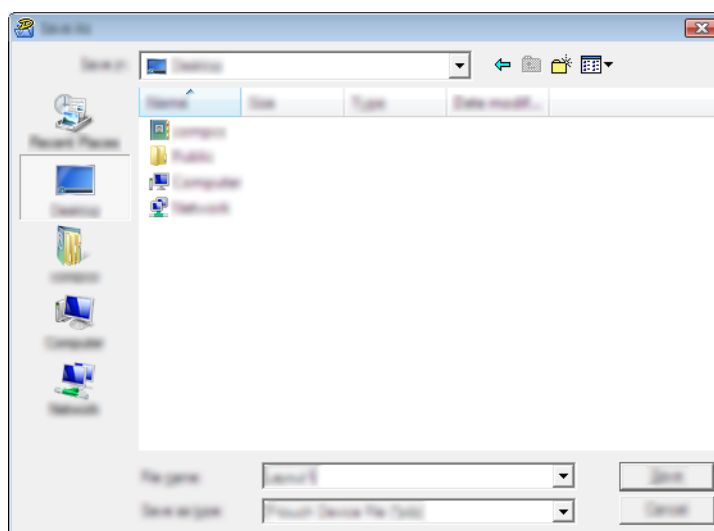
- 3 Click **[File]** - **[Save Transfer File]**.



#### Note

- If **[Save Transfer File]** was clicked while either **[Configurations]** or a created folder is selected, all templates in the folder are saved as the Transfer Package file (.pdz).
- Multiple templates can be combined into a single Transfer Package file (.pdz).

- 4 Type in the name, and then click **[Save]**.



The template is saved as a Transfer Package file (.pdz).

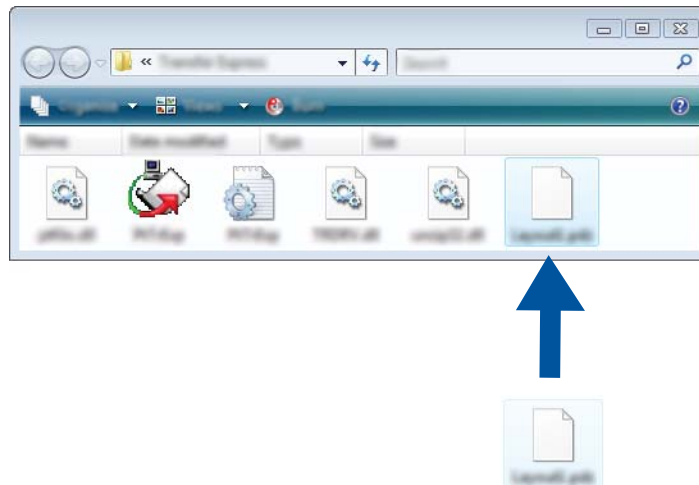
## Distributing the Transfer Package File (.pdz) and P-Touch Transfer Express to the User



### Note

If the user already has P-touch Transfer Express downloaded, it is not necessary for the administrator to send the Transfer Express folder to the user. In this case, the user can simply move the distributed Transfer Package file to the downloaded folder and then double-click **[PtTrExp.exe]**.

- 1 Move the Transfer Package file (.pdz) to the downloaded folder.



- 2 Distribute all files in the downloaded folder to the user.

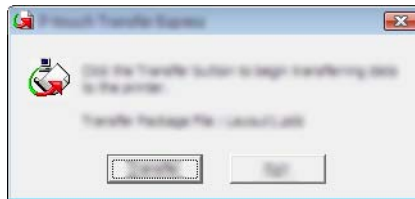
## Transferring the Transfer Package File (.pdz) to Your Printer

Using the P-touch Transfer Express application received from the administrator, the user can transfer the Transfer Package file (.pdz) to the printer.

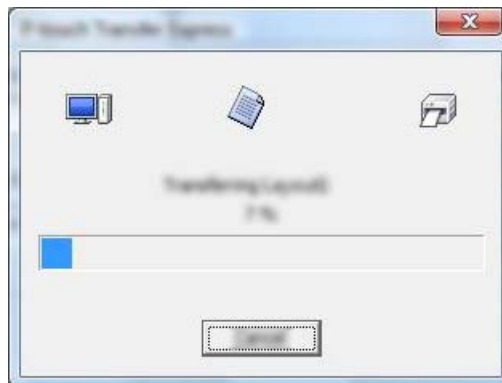
### ❗ Important

Do not turn off the power when transferring templates.

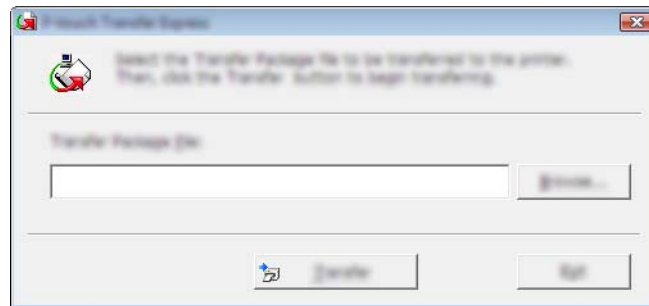
- 1 Turn on the printer.
- 2 Using a USB cable, connect the printer to the computer.
- 3 Double-click [**PtTrExp.exe**], which was received from the administrator.
- 4 When there is a single Transfer Package file (.pdz) within the folder containing [**PtTrExp.exe**], click [**Transfer**].



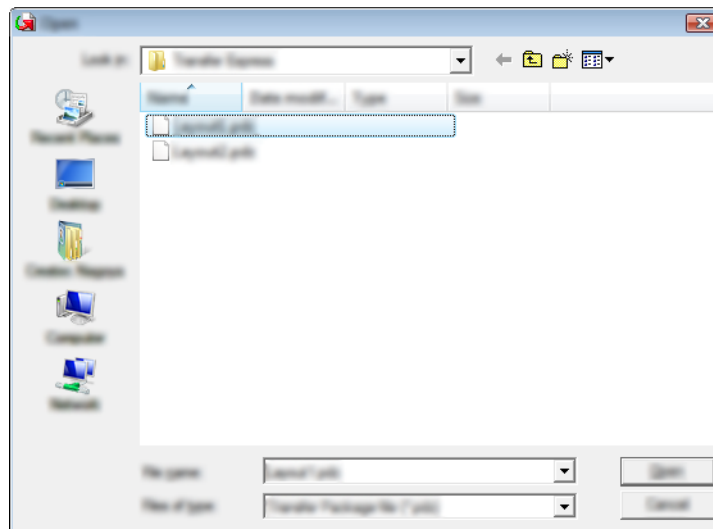
The transfer of the Transfer Package file begins.



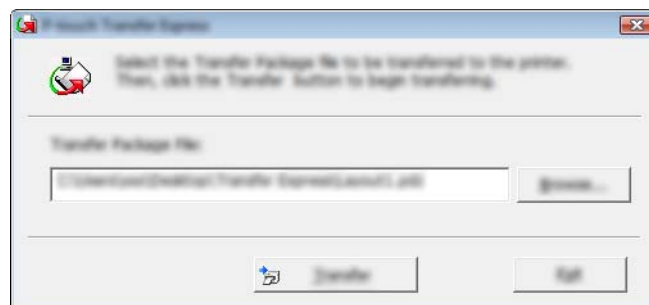
When there are either multiple or no Transfer Package files (.pdz) within the folder containing [PtTrExp.exe], click [**Browse**].



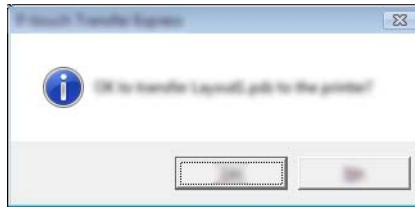
Select the Transfer Package file you want to transfer, and then click [**Open**].



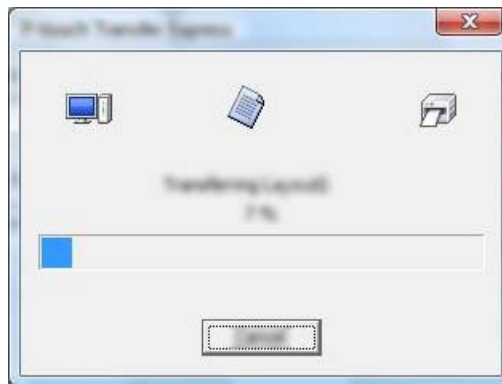
Click [**Transfer**].



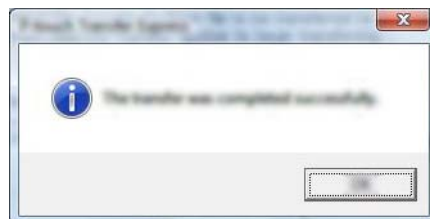
Click **[Yes]**.



The transfer of the Transfer Package file begins.



5 Click **[OK]**.



The transfer of the Transfer Package file is completed.

## MW-145 MFi Compatible List

iPod touch (6th generation)

iPod touch (5th generation)

iPhone 6s Plus

iPhone 6s

iPhone 6 Plus

iPhone 6

iPhone 5s

iPhone 5c

iPhone 5

iPhone 4s

iPhone 4

iPad Pro

iPad Air 2

iPad Air

iPad mini 4

iPad mini 3

iPad mini 2

iPad mini

iPad (4th generation)

iPad (3rd generation)

iPad 2

## MW-260 MFi Compatible List

iPod touch (6th generation)

iPod touch (5th generation)

iPhone 6s Plus

iPhone 6s

iPhone 6 Plus

iPhone 6

iPhone 5s

iPhone 5c

iPhone 5

iPhone 4s

iPad Pro

iPad Air 2

iPad Air

iPad mini 4

iPad mini 3

iPad mini 2

iPad mini

iPad (4th generation)

iPad (3rd generation)

iPad 2

**brother**