

D200
User's Guide
English

With your PT-D200, you can create labels for multiple applications. Select from the many frames, character sizes and styles to design beautiful custom labels. In addition, the variety of tape cartridges available allows you to print labels with different widths and exciting colors.

Read this manual carefully before starting and keep the manual in a handy place for future reference.

Printed in China
LAA689001



Safety Precautions

WARNING

Indicates a potentially hazardous situation which, if not avoided, could result in death or serious injuries.

- Follow these guidelines to avoid the risk of fire, burns, injury, electric shocks, rupture, overheating, abnormal odours or smoke.**
- Always use the specified voltage and the suggested AC adapter for the P-touch labeler to prevent any damage or failure.
 - Do not touch the P-touch labeler during a lightning storm.
 - Do not use the P-touch labeler/AC adapter in places of high humidity such as bathrooms.
 - Do not overload the power cord.
 - Do not place heavy objects on, or damage the power cord or plug. Do not forcibly bend or pull the power cord. Always hold the AC adapter when disconnecting from the power outlet.
 - Make sure that the plug is fully inserted to the power outlet. Do not use an outlet that is loose.
 - Do not allow the P-touch labeler/AC adapter/power plug/batteries to get wet, for example, by handling them with wet hands or spilling beverages on to them.
 - Since loss of eyesight may result when leaked fluid from batteries gets into your eyes, immediately rinse your eyes with a large amount of clean water, and then seek medical attention.
 - Do not disassemble or modify the P-touch labeler/AC adapter/ batteries.
 - Do not allow a metal object to contact both the plus and minus ends of a battery.
 - Do not use sharp objects, such as tweezers or a metallic pen, to change the batteries.
 - Do not throw the batteries into fire or expose to heat.
 - Disconnect the AC adapter and remove batteries immediately and stop using the P-touch labeler if you notice abnormal odor, heat, discoloration, deformation or anything unusual while using or storing it.
 - Do not use a damaged or leaking battery as the fluid may get on your hands.
 - Do not use a deformed or leaking battery or one whose label is damaged. There is a possibility of generating heat.

CAUTION

Indicates a potentially hazardous situation which, if not avoided, may result in minor or moderate injuries.

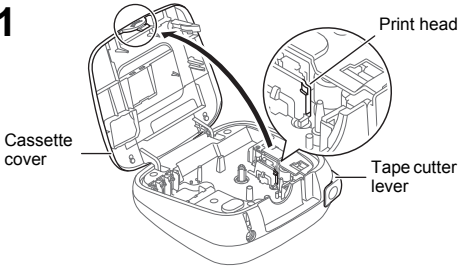
- Follow these guidelines to avoid personal injury, liquid leakage, burns or heat.**
- When the P-touch labeler is not being used, store it out of the reach of children. In addition, do not allow children to put the P-touch labeler parts or labels in their mouths. If any object has been swallowed, seek medical attention.
 - Do not touch metal parts around the print head immediately after printing.
 - Do not touch the cutter blade.
 - If leaked fluid from batteries gets on your skin or clothes, immediately rinse them with clean water.
 - Remove the batteries and disconnect the AC adapter if you do not intend to use the P-touch labeler.
 - Do not use a battery other than that specified. Do not use combinations of old and new batteries or combinations of different types, different charging levels, different manufacturers or different models. Do not insert a battery with its plus and minus ends reversed.
 - Do not drop or hit the P-touch labeler/AC adapter.
 - Do not press on the LCD display.
 - Do not put your finger inside the P-touch labeler when you close the cassette cover.
 - Before using Ni-MH rechargeable batteries, carefully read the instructions for the batteries and battery charger, and be sure to use them correctly.
 - When using Ni-MH rechargeable batteries, charge the batteries with a specialized battery charger before using the batteries.

General Precautions

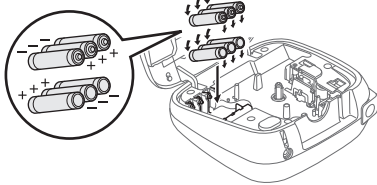
- Depending on the location, material, and environmental conditions, the label may unpeel or become irremovable, the color of the label may change or be transferred to other objects. Before applying the label, check the environmental conditions and the material.
- Do not use the P-touch labeler in any way or for any purpose not described in this guide. Doing so may result in accidents or damage the P-touch labeler.
- Use only Brother TZe tapes with the P-touch labeler. Do not use tapes that do not have the mark.
- Only use a soft, dry cloth to clean the labeler; never use alcohol or other organic solvents.
- Use a soft wipe to clean the print head; never touch the print head.
- Do not put any foreign objects into the tape exit slot or AC adapter connector or battery compartment, etc.
- Do not place the P-touch labeler/batteries/AC adapter in direct sunlight or rain, near heaters or other hot appliances, in any location exposed to extremely high or low temperatures (e.g., on the dashboard or in the back of your car) or high humidity, or in dusty locations.
- Do not apply excessive pressure to the cutter lever.
- Do not try to print if the cassette is empty; it will damage the print head.
- Do not pull the tape while printing or feeding; it will damage the tape and the P-touch labeler.
- Any data stored in memory will be lost due to failure or repair of the P-touch labeler, or if the battery expires.
- The P-touch labeler is not equipped with a charging feature for rechargeable batteries.
- The printed text may differ from the text that appears in the LCD.
- The length of the printed label may differ from the displayed label length.
- A protective clear plastic sticker is placed over the display during manufacturing and shipping. This sticker should be removed prior to use.
- When power is disconnected for more than three minutes, all text, format settings and any text files stored in the memory will be cleared.

Power Supply and Tape Cassette

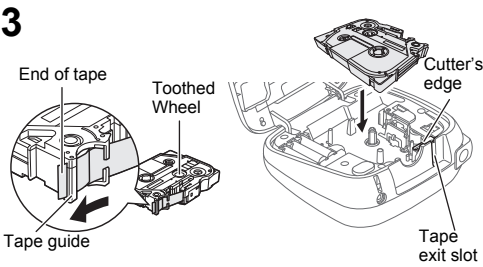
1



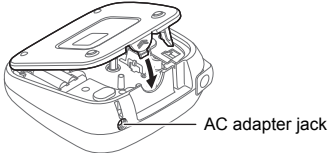
2



3



4



Open the cassette cover by pressing the above indicated area at the top end of the machine.

If a tape cassette is already installed, remove it by pulling it straight up. Also, if batteries are already installed, remove them.

- Make sure that the power is turned off when replacing batteries or tape cassettes.

Insert six new AAA alkaline batteries (LR03) or fully charged Ni-MH batteries (HR03), making sure that their poles point in the correct directions.

Users of alkaline batteries:

Always replace all six batteries at the same time with brand new ones.

Users of Ni-MH batteries:

Always replace all six batteries at the same time with fully charged ones.

NOTE

Visit us at <http://solutions.brother.com/> for the latest information about the recommended batteries.

Insert a tape cassette, making sure that it snaps into place.

- Make sure that the end of the tape feeds under the tape guides.
- Use only Brother TZe tapes with this machine.

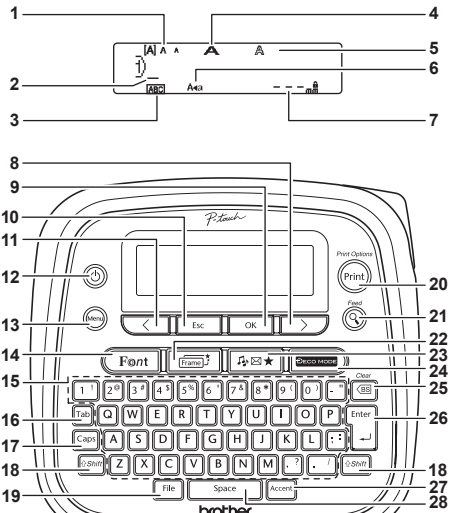
Securely close the cassette cover, making sure that it snaps into place.

NOTE

When using optional AC adapter

1. Insert the plug on the adapter cord into the AC adapter jack on the top end of the machine.
2. Insert the plug into the nearest standard electrical outlet.
For memory back up, we recommend using AAA alkaline batteries (LR03) or Ni-MH batteries (HR03) together when using the AC adapter.

LCD Display & Keyboard



1. Size
2. Cursor
3. Underline/Frame
4. Width
5. Style
6. Caps
7. Label Length
If a specific label length has been selected, also appears.
8. Cursor key : Right (Use with Shift key to go to end of the text.)
9. OK key
10. Escape key
11. Cursor key : Left (Use with Shift key to go to top of the text.)
12. Power key
13. Menu key
14. Font key
15. Character key
16. Tab key
17. Caps key
18. Shift key
19. File key
20. Print key
21. Preview key
22. Frame key
23. Symbol key
24. DECO MODE key
25. Backspace key
26. Enter key
27. Accent key
28. Space key

NOTE

- The LCD shows one row of 15 characters; however, the text that you enter can be up to 80 characters in length.
- While selecting the settings, press Space key to go back to the default item.
- The print preview is a generated image of the label, and may differ from the actual label when printed.
- Label length shown on LCD may slightly differ from the actual label length when printed.

Specifications

- Dimensions:** (W x D x H) Approx. 165(W) x 155(D) x 68(H)mm
- Weight:** Approx. 490 g (without batteries and tape cassette)
- Power supply:** Six AAA alkaline batteries (LR03)
Six AAA Ni-MH batteries (HR03)*1
Optional AC adapter (AD-24ES/AD-5000ES:For Australia, New Zealand only)
- Tape cassette:** Brother TZe tape (width)
3.5mm, 6mm, 9mm, 12mm
- *1 Visit us at <http://solutions.brother.com/> for the latest information about the recommended batteries.

Initial Settings

1 Start your machine.

Supply power by using six AAA batteries or the optional AC adapter, and then press .

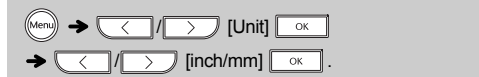
2 Set the language.

The default setting is [English].



3 Set the unit of measurement.

The default setting is [mm].



NOTE

- The machine automatically turns off if no keys are pressed within five minutes.
- To cancel any operation, press .

Troubleshooting

Error message

| Message | Cause/Remedy |
|--------------|--|
| Low Battery! | The batteries are weak. If using AAA alkaline batteries: Replace them with new ones. If using Ni-MH batteries: Charge them fully. |
| Battery Dead | The installed batteries are running low. |
| Invalid! | • There is no text above the cursor when you selected [Numbering]. • Invalid character is selected for [Numbering]. • Invalid number is selected for [Tab Length] or [Label Length]. • An invalid value was entered as the label length while using the DECO MODE or Name Label function. |
| No Text! | • You tried to print a text file when there is no data stored in the memory. • is pressed when no text is entered. • You tried to select [Numbering], [Mirror], or Text Preview when no text is entered. • or was pressed when no text was entered while using the DECO MODE or Name Label function. |
| Line Limit! | • You tried to enter a 3rd line by pressing . |
| | • You tried to print or preview two lines of text while 3.5mm or 6 mm tape is installed. Install tape of a larger size. |

| Message | Cause/Remedy |
|--------------|--|
| No Cassette! | You tried to print a label when there is no cassette installed. |
| Cutter Error | Tape cutter lever is used in the middle of printing process. |
| Text Full! | The maximum number of characters (80 characters, 50 characters for DECO MODE or Name Label function) have already been entered. |
| Text Limit! | With the DECO MODE or Name Label function: Since the number of entered characters exceeds the label length, reduce the text. All other functions: Since the number of entered characters exceeds the label length, reduce the text, or select [Auto] as the label length. |
| No Frame OK? | Printing on 3.5mm tape with invalid Frame setting ON. (Select to print with no Frame, to cancel.) |
| OK to Feed? | Feeding tape after printing when [Chain Print] is selected. Refer to "Setting Margin". |
| Insert 12mm | Only 12mm tape cassette is available for DECO MODE or Name Label function. |
| Wrong Tape! | Use a tape cassette with the mark. |

What to do when...

| Problem | Solution |
|--|--|
| The display stays blank after you have turned on the machine. | • Check that the batteries are correctly inserted. • If the batteries are weak, replace them. • Check that the AC adapter is correctly connected. |
| When the label is printed out, there is too much margin (space) on both sides of the text. | • See "Setting Margin" in this users guide and select [Half] or [Narrow] to have smaller margins for your label. |
| The machine does not print, or the printed characters are not formed properly. | • Check that the tape cassette has been inserted correctly. • If the tape cassette is empty, replace it. • Check the cassette cover is properly closed. |
| The setting has cleared on its own. | • The batteries may be weak. Replace them. • When power is disconnected for more than three minutes, all text & formats in the display will be lost. Language and Unit settings will also be cleared. |
| A blank horizontal line appears through the printed label. | • There maybe some dust on the print head. Remove the tape cassette and use a dry cotton swab to gently wipe the print head with an up-and-down motion. • The print head can be cleaned more easily if the optional print head cleaning cassette (TZe-CL3) is used. |

| Problem | Solution |
|---|--|
| The machine has "locked up" (i.e., nothing happens when a key is pressed, even though the machine is on.) | • Refer to "Resetting the P-touch". |
| The power turns off when you try to print. | • The batteries may be weak. Replace them. • Check that the batteries are correctly inserted. • A wrong adapter is used; the recommended adapter is the AD-24ES/AD-5000ES (for Australia, New Zealand only). |
| The tape does not feed properly or the tape gets stuck inside the machine. | • Check that the end of the tape feeds under the tape guides. • The cutter lever is used while printing. Do not touch the cutter lever during printing. |
| All text and format settings need to be cleared to create a new label. | • Press + and select [Text&Format]. |
| To change language setting. | • Refer to "Initial Settings". |

BASIC USAGE

Entering Text

► Switching Upper Case/Lower Case

Caps

Upper case (Caps ON) Lower case (Caps OFF)

W A A 3 ABCDE 78mm

Caps

W A A 3 abcde 78mm

Caps

► Making Two Lines of Text

Move the cursor to where the second line starts and press

Enter

. Use either 9mm or 12mm wide tape for two line text.

Line 1

W A A 3 ABC 58mm

Label image

ABC
DEF

Line 2

W A A 3 DEF 58mm

● NOTE

- The return symbol(

↵

) will be displayed when the Enter key is pressed.

► Entering Tab

Menu

→

<

/

>

 [Tab]

OK

- You can also set a tab by pressing

Tab

. To change tab length:

Menu

→

<

/

>

 [Tab Length]

OK

 →

<

/

>

 [Auto/0-100 mm]]

OK

Printing Labels

► Preview

You can preview the text before printing.

Preview

- The print preview is a generated image of the label, and may differ from the actual label when printed.
- When the LCD cannot display all the text at a time, press

<

/

>

 to display the hidden text.

► Feeding (Tape Feed)

⇧Shift

 +

Preview

► Printing

Print

 → [Copies:]

<

/

>

1

 -

9

↵

 →

OK

- If you need only 1 copy of the label, press

OK

 without selecting the number of copies.
- The number of copies can also be specified by pressing a number key.
- To prevent damage to the tape, do not touch the cutter lever while the message "Printing..." or "Feeding..." is displayed.
- To cut off the label, push in the tape cutter lever on the upper-right corner of the machine.
- To remove the backing, fold the label lengthwise with the text facing inward, to expose the inside edges of the backing. Peel off the backing one piece at a time and apply.
- You can print up to 9 copies of each label.

► Using Print Options (⇧Shift + Print)

[Numbering]

You can print many copies of the same text while increasing a selected number by 1 after each label is printed.

Example: To print copies of a label containing a serial number (0123, 0124 and 0125)

<

/

>

W A A 3 0123 58mm

 →

⇧Shift

 +

Print

 →

<

/

>

 [Numbering]

OK

 →

<

/

>

 • Set 3-

1

OK

- Select the highest number you wish to be printed when setting the number.

[Mirror]

⇧Shift

 +

Print

 →

<

/

>

 [Mirror]

OK

 →

[Mirror Print?]

OK

123456789

- Use clear tape in [Mirror], so the labels can be read correctly from the opposite side when attached on glass, windows or other transparent surfaces.

Saving Label Files

You can save up to 30 labels and recall them for printing at a later date. A maximum of 80 characters can be saved per file, a maximum total of 2400 characters for the total memory. You can also edit and overwrite the stored label.

► Save

File

 →

<

/

>

 [Save]

OK

 →

<

/

>

01:1

OK

► Print

File

 →

<

/

>

 [Print]

OK

 →

<

/

>

01:P-touch 80mm

OK

 →

[Copies:]

<

/

>

1

 -

9

↵

 →

OK

► Open

File

 →

<

/

>

 [Open]

OK

 →

<

/

>

01:P-touch 80mm

OK

- You can also enter the File menu by pressing

Menu

 →

4

↵

.

● NOTE

If you try to store a label when there is already a label stored to that number, a message "Overwrite?" will appear. Press

OK

 to save your new label. Press

Esc

 to cancel.

► Entering Accented Characters

A

 -

Z

 →

Accent

 →

Accent

 /

<

/

>

 →

OK

- Refer to the table of accented characters (B) on the enclosed insertion sheet for a list of available accented characters.
- To cancel operations, press

Esc

.
- The order of accented characters differs by the selected LCD language.

► Changing Label Length

Menu

 →

<

/

>

 [Label Length]

OK

 →

<

/

>

 [Auto/30-300 mm]

OK

● NOTE

- After the label is printed, cut along the printed dots (·) with scissors so that the label length matches the machine setting.
- If a specific label length has been selected,

⏏

 also appears in the LCD.

► To Clear

By pressing

BS

, the letters will be deleted one by one. To delete all text and settings :

⇧Shift

 +

BS

 →

<

/

>

 [Text&Format]

OK

To delete text only :

⇧Shift

 +

BS

 →

<

/

>

 [Text Only]

OK

► Setting Margin (Menu + 2)

Menu

 →

<

/

>

 [Margin]

OK

 →

<

/

>

 [Full/Half/Narrow/Chain Print]

OK

[Full]/[Half]/[Narrow]
For leaving equal margins on both sides of the text.

Full

Half

Narrow

25.4mm

25.4mm

12mm

12mm

4mm

4mm

[Chain Print]
For creating a label containing text in various styles.

- Enter text.
- Press

Print

, then [Copies:] appears.
- Press

<

 /

>

 or enter number with number keys to select the number of copies.
- Press

OK

. Printing will start, and then the message "OK to Feed?" appears.
- Press

Esc

 to enter more text.
- Clear the text, enter the text for the next label, and then press

Print

.
- When the message "OK to Feed?" appears after the last label is printed, press

OK

.
- After the tape is fed, press the cutter lever to cut off the chain of labels.

● NOTE

- When [Chain Print] is set, feed the tape before using the cutter otherwise a part of the text may be cut off. Also, cut along the printed dots (·) with scissors so the text is centered in the label.
- When [Half] or [Narrow] is set, displayed label length is the length from the printed dots (·) to the end of the label.

LCD display

Label image

Full

Half

Narrow

W A A 3 ABC 67mm

W A A 3 ABC 41mm

W A A 3 ABC 25mm

- To print more than 1 copy of a label with minimum margin, set the margin to [Narrow].
- Do not pull the tape since this may damage the tape cassette.

Accessories

Tape Cassettes: See the included "Supplies and Accessories Guide".

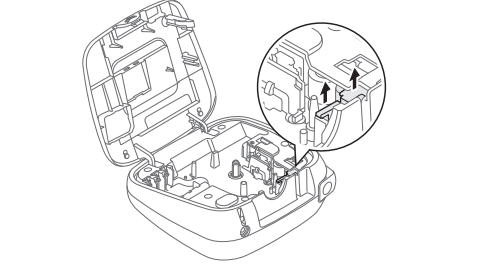
AC Adapter: AD-24ES/AD-5000ES:For Australia, New Zealand only

Cutter Unit: TC-4 (replacement)

If the cutter blade becomes blunt after repetitive use and the tape cannot be cut cleanly, replace with new cutter unit (stock no. TC-4) by obtaining from an authorized Brother reseller.

► Replacing the Cutter Unit

- Pull out the two sections of the cutter unit (green) in the direction of the arrows shown in the illustration.



- Install a new cutter unit. Push it in until it snaps into place.

⚠ Do not touch the cutter blade directly with your fingers.

USING TEMPLATES

Name Label

This function allows you to create various name labels using the built-in templates. Refer to the Name Label format table (D) on the enclosed insertion sheet.

Example:

Bill Anderson

ABC Company, Inc.

Menu

 →

<

/

>

 [Name Label]

OK

 →

[Select Layout] →

<

/

>

Bill Anderson

OK

 →

Text 1

 →

Bill Anderson

OK

 →

Text 2

 →

ABC Company, Inc.

OK

 →

Label Length

 →

<

/

>

 [Auto/30 - 200mm]

OK

 → [Print]

OK

● NOTE

- Depending on the format you have selected, the entire contents of your text may not be printed. For example, if you selected a fixed Label Length and the text is too long, an error message "Text Limit!" will appear.
- The templates cannot be edited.
- Only the highlighted symbols on the enclosed insertion sheet can be used in DECO MODE.

- To clear all text, press

⇧Shift

 and

BS

, then "Clear?" appears. Press

OK

 to clear. Press

Esc

 to cancel.
- When you access DECO MODE or Name Label function, your most recently printed DECO MODE or Name Label function text and label length will be recalled.

- Press

Esc

 to return to the previous step.

USEFUL FUNCTION KEYS

Font Key

- Press

Font

 to select the settings to enter the text.

Font

 →

<

/

>

 Select an item

OK

- Press

<

/

>

 to select the settings.

| | | | |
|-------|------------------|------------------|----------------|
| Font | <div>A A</div> | Helsinki | <div>A 1</div> |
| | | Brussels | <div>A 1</div> |
| | | US | <div>A 1</div> |
| | | Florida | <div>A 1</div> |
| | | Belgium | <div>A 1</div> |
| | | San Diego | <div>A 1</div> |
| | | Los Angeles | <div>A 1</div> |
| | | Calgary | <div>A 1</div> |
| | | HEL + Atlanta * | <div>A 1</div> |
| | | HEL + Adams * | <div>A 1</div> |
| | | HEL + Brunei * | <div>A 7</div> |
| | | HEL + Istanbul * | <div>A 1</div> |
| | | HEL + Sofia * | <div>A 1</div> |
| | | HEL + Germany * | <div>A 1</div> |
| Size | <div>A A A</div> | Large | <div>A</div> |
| | | Medium | <div>A</div> |
| | | Small | <div>A</div> |
| Width | <div>A A</div> | Normal | <div>A</div> |
| | | × 2 | <div>A</div> |
| | | × 1/2 | <div>A</div> |
| Style | <div>A A</div> | Normal | <div>A</div> |
| | | Bold | <div>A</div> |
| | | Outline | <div>A</div> |
| | | Shadow | <div>A</div> |
| | | Solid | <div>A</div> |
| | | Italic | <div>A</div> |
| | | I+Bold | <div>A</div> |
| | | I+Outline | <div>A</div> |
| | | I+Shadow | <div>A</div> |
| | | Vertical | <div>A</div> |

* When [HEL + Atlanta], for example, is selected, the font for characters, including accented characters, will be Helsinki, and the font for numbers and some symbols will be Atlanta. Other combined fonts will be divided in the same way.

● NOTE

- To cancel operations, press

Esc

.
- Refer to the font sample table (F) on the enclosed insertion sheet.
- The actual printed font size depends on the tape width, number of characters and number of input lines. Once characters reach a minimum size, the selected font will default to a custom font which is based on the Helsinki style. This allows labels to print using the smallest text possible on narrow or multi-line labels.

Frame Key

Press

Frame

 to select the frame design. Refer to the frame design table (E) on the enclosed insertion sheet.

Frame

 →

<

/

>

 Select a frame

OK

● NOTE

To cancel operations, press

Esc

.

DECO MODE

This function allows you to create unique labels by using built-in templates. Refer to the DECO MODE format table (C) on the enclosed insertion sheet.

Example:

ABCDEF

ABCD

DECO MODE

 →

[Select Layout] →

<

/

>

ABCDEF

OK

 →

[Input Text] →

ABCDEF

OK

 →

Label Length

 →

<

/

>

 [Auto/30-200mm]

OK

 → [Print]

OK

- To exit the DECO MODE or Name Label function and return to the text input screen, do one of following:
 - Press

Esc

.
 - Press

<

/

>

 to select [Cancel], and then press

OK

 when "Print" appears.
- These features are only available when using 12mm wide tape cassettes.
- The maximum label length is 200mm for DECO MODE and Name Label function.
- When [Auto] is selected for "Label Length", the label will automatically adjust to the correct length for printing the text one time.
- Press

Space

 to return to the [Auto] setting for "Label Length" mode.

Symbol Key

Press

Symbol

 to select various symbols. Refer to the table of symbols (A) on the enclosed insertion sheet for a list of available symbols.

Symbol

 →

<

/

>

 [Basic/Pictograph]

OK

 →

<

/

>

 Select category

OK

 →

<

/

>

 Choose a symbol

OK

● NOTE

To cancel operations, press

Esc

.

Short Cut Keys

| | | |
|--------------|------------------------------------|---------------|
| Language | <div>Menu</div> → <div>Space</div> | <div>🇬🇧</div> |
| Label Length | <div>Menu</div> → <div>1</div> | <div>📏</div> |
| Margin | <div>Menu</div> → <div>2</div> | <div>📏</div> |
| Name Label | <div>Menu</div> → <div>3</div> | <div>🏷️</div> |
| File | <div>Menu</div> → <div>4</div> | <div>📁</div> |
| Tab | <div>Menu</div> → <div>5</div> | <div>📏</div> |
| Tab Length | <div>Menu</div> → <div>6</div> | <div>📏</div> |
| Clear | <div>Menu</div> → <div>BS</div> | <div>🗑️</div> |
| Unit | <div>Menu</div> → <div>7</div> | <div>📏</div> |

Resetting the P-touch

You can reset the P-touch labeler when you want to initialize the settings, or in the event the P-touch labeler is not working properly.

- Turn off the P-touch labeler, hold down

⇧Shift

 and

R

 and then press

Power

 to turn the P-touch back on.

- Release

⇧Shift

 and

R

.
The P-touch labeler turns on with the internal memory reset.

● NOTE

All text, settings and stored files are cleared.

Contact information
See the Web:http://www.brother.com.au (Australia only)

Declaration of Conformity
(Europe/Turkey only)
We, BROTHER INDUSTRIES, LTD
15-1, Naeshiro-cho, Mizuho-ku,
Nagoya, 467-8561, Japan
declare that this product is in compliance with the essential requirements and other relevant provisions of Directives 2004/108/EC and 2009/125/EC.
The Adapter AD-24ES is in compliance with the essential requirements and other relevant provisions of Directive 2006/95/EC.
The Declaration of Conformity (DoC) is on our Web site. Please go to http://solutions.brother.com -> choose region (eg. Europe) -> choose country -> choose your model -> choose "Manuals"-> choose Declaration of Conformity ("Select Language when required).