

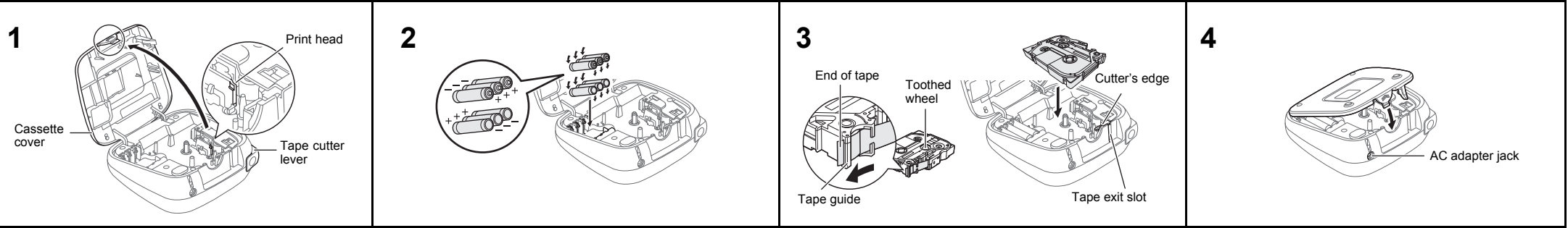


With your PT-D200, you can create labels for multiple applications. Select from the many frames, character sizes and styles to design beautiful custom labels. In addition, the variety of tape cartridges available allows you to print labels with different widths and exciting colors.

Read this manual carefully before starting and keep the manual in a handy place for future reference.

Printed in China
LAB838001A

Power Supply and Tape Cassette



Open the cassette cover by pressing the above indicated area at the top end of the machine.
If a tape cassette is already installed, remove it by pulling it straight up. Also, if batteries are already installed, remove them.

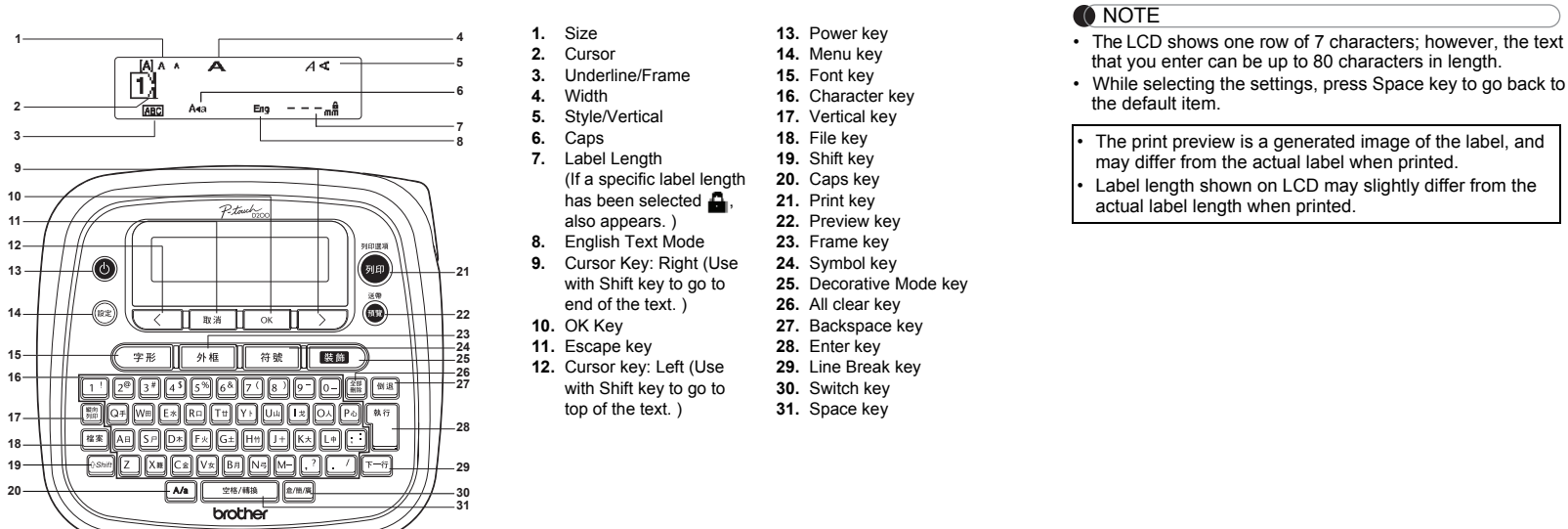
- Make sure that the power is turned off when replacing batteries or tape cassettes.

Insert six new AAA alkaline batteries (LR03) or fully charged Ni-MH batteries (HR03), making sure that their poles point in the correct directions.
Users of alkaline batteries:
Always replace all six batteries at the same time with brand new ones.
Users of Ni-MH batteries:
Always replace all six batteries at the same time with fully charged ones.

Insert a tape cassette, making sure that it snaps into place.

- Make sure that the end of the tape feeds under the tape guides.
- Use only Brother TZe tapes with this machine.

LCD Display & Keyboard



Troubleshooting

Message	Cause/Remedy
電池電 量低！	The batteries are weak. If using AAA alkaline batteries: Replace them with new ones. If using Ni-MH batteries: Charge them fully.
請更換 電池！	The installed batteries are running low.
錯誤的 數值！	<ul style="list-style-type: none"> There is no text above the cursor when you selected [自動跳號]. Invalid character is selected for [自動跳號]. Invalid number is selected for [長度]. An invalid value was entered as the label length while using the Decorative Mode or Name Label function.
資料未 輸入！	<ul style="list-style-type: none"> You tried to print a text file when there is no data stored in the memory. [確認] is pressed when no text is entered. You tried to select [自動跳號], [鏡像列印] or Text Preview when no text is entered. [OK] or [確認] was pressed when no text was entered while using the Decorative Mode or Name Label function.
超過最大 行數！	<ul style="list-style-type: none"> You tried to enter a 3rd line by pressing [T-11]. You tried to print or preview two lines of text while 3.5 mm tape is installed. Install tape of a larger size.

Safety Precautions

- ⚠WARNING** Indicates a potentially hazardous situation which, if not avoided, could result in death or serious injuries.
- Follow these guidelines to avoid the risk of fire, burns, injury, electric shocks, rupture, overheating, abnormal odors or smoke.**
- Always use the specified voltage and the suggested AC adapter (AD-24ES) for the P-touch labeler to prevent any damage or failure.
 - Do not touch the P-touch labeler during a lightning storm.
 - Do not use the P-touch labeler/AC adapter in places of high humidity such as bathrooms.
 - Do not overload the power cord.
 - Do not place heavy objects on, or damage the power cord or plug. Do not forcibly bend or pull the power cord. Always hold the AC adapter when disconnecting from the power outlet.
 - Make sure that the plug is fully inserted to the power outlet. Do not use an outlet that is loose.
 - Do not allow the P-touch labeler/AC adapter/power plug/batteries to get wet, for example, by handling them with wet hands or spilling beverages on to them.
 - Since loss of eyesight may result when leaked fluid from batteries gets into your eyes, immediately rinse your eyes with a large amount of clean water, and then seek medical attention.
 - Do not disassemble or modify the P-touch labeler/AC adapter/batteries.
 - Do not allow a metal object to contact both the plus and minus ends of a battery.
 - Do not use sharp objects, such as tweezers or a metallic pen, to change the batteries.
 - Do not throw the batteries into fire or expose to heat.
 - Disconnect the AC adapter and remove batteries immediately and stop using the P-touch labeler if you notice abnormal odor, heat, discoloration, deformation or anything unusual while using or storing.
 - Do not use a damaged or leaking battery as the fluid may get on your hands.
 - Do not use a deformed or leaking battery or one whose label is damaged. There is a possibility of generating heat.

- ⚠CAUTION** Indicates a potentially hazardous situation which, if not avoided, may result in minor or moderate injuries.
- Follow these guidelines to avoid personal injury, liquid leakage, burns or heat.**
- When the P-touch labeler is not being used, store it out of the reach of children. In addition, do not allow children to put the P-touch labeler parts or labels in their mouths. If any object has been swallowed, seek medical attention.
 - Do not touch metal parts around the print head immediately after printing.
 - If leaked fluid from batteries gets on your skin or clothes, immediately rinse them with clean water.
 - Remove the batteries and disconnect the AC adapter if you do not intend to use the P-touch labeler.
 - Do not use a battery other than that specified. Do not use combinations of old and new batteries or combinations of different types, different charging levels, different manufacturers or different models. Do not insert a battery with its plus and minus ends reversed.
 - Do not drop or hit the P-touch labeler/AC adapter.
 - Do not press on the LCD display.
 - Do not put your finger inside the P-touch labeler when you close the cassette cover.
 - Before using Ni-MH rechargeable batteries, carefully read the instructions for the batteries and battery charger, and be sure to use them correctly.
 - When using Ni-MH rechargeable batteries, charge the batteries with a specialized battery charger before using the batteries.

General Precautions

- Depending on the location, material, and environmental conditions, the label may peel or become irremovable, the color of the label may change or be transferred to other objects. Before applying the label, check the environmental conditions and the material.
- Do not use the P-touch labeler in any way or for any purpose not described in this guide. Doing so may result in accidents or damage the P-touch labeler.

- Use only Brother TZe tapes with the P-touch labeler. Do not use tapes that do not have the **TZe** mark.
- Only use a soft, dry cloth to clean the labeler; never use alcohol or other organic solvents.
- Use a soft wipe to clean the print head; never touch the print head.
- Do not put any foreign objects into the tape exit slot or AC adapter connector or battery compartment, etc.
- Do not place the P-touch labeler/batteries/AC adapter in direct sunlight or rain, near heaters or other hot appliances, in any location exposed to extremely high or low temperatures (e. g., on the dashboard or in the back of your car) or high humidity, or in dusty locations.
- Do not apply excessive pressure to the cutter lever.
- Do not try to print if the cassette is empty; it will damage the print head.
- Do not pull the tape while printing or feeding; it will damage the tape and the P-touch labeler.
- Any data stored in memory will be lost due to failure or repair of the P-touch labeler, or if the battery expires.
- The P-touch labeler is not equipped with a charging feature for rechargeable batteries.
- The printed text may differ from the text that appears in the LCD.
- The length of the printed label may differ from the displayed label length.
- A protective clear plastic sticker it placed over the display during manufacturing and shipping. This sticker should be removed prior to use.
- When power is disconnected for more than three minutes, all text, format settings and any text files stored in the memory will be cleared.

BASIC USAGE

Entering Text

- **Switching Upper Case/Lower Case**
- Upper case ([ON]) Lower case ([OFF])
- **Select The Input Method**
[倉頡 / 簡易倉頡 / 廣東拼音]
- Press [倉頡] to toggle between 倉頡 / 簡易倉頡 / 廣東拼音 input methods.
- Use 廣東拼音 to enter texts**
- Select 廣東拼音 and then press [輸入] to enter Chinese characters. You can convert Chinese characters word by word.
- Example "香"**

- 1 Under 廣東拼音 input method, type "HONG".
- Press [輸入] Optional
- 2 Chinese characters for "HONG" 洪 供 洪 醫 抗 霍 匪 炕 杭 will appear on the screen.
- 3 Press [輸入] or [左] / [右] to convert optional Chinese characters, and then select "香".
- 4 Press [確認] or [OK].
- "香" will be inputted.

- You can convert up to 25 uncertain Chinese characters at one time.
- Once confirmed, you can't convert them.
- If you want to stop converting Chinese characters, please press [取消].
- Before converting Chinese characters, if you press [輸入], the inputted character will be cleared immediately and return to the initial input state.
- This product has learning function, can display Chinese characters on priority.

Use 倉頡 to enter texts.
Input radicals, and convert Chinese characters word by word.

- You can input up to 5 Chinese character radicals at one time. If you want to enter a group of characters, please press [輸入] key to convert Chinese characters, and then enter the next character.
- Example "仲"**

- 1 Under 倉頡 input method, type [亻] [中].
- To clear inputted texts word by word, press [清除].
- To clean all inputted texts, press [取消].
- 2 Press [輸入] key.
- 3 Press [輸入] or [左] / [右] to convert Chinese characters, and then press "仲".
- 4 Press [確認] or [OK].
- "仲" will be inputted.

Printing Labels

- **Preview**
You can preview the text before printing.
- [確認]
- The print preview is a generated image of the label, and may differ from the actual label when printed.
 - When the LCD cannot display all the text at a time, press [左] / [右] to display the hidden text.
- **Feeding (Tape Feed)**
- [確認] + [確認]
- **Printing**
- [確認] → [列印份數] [左] / [右] 1 1 - 9 →
- If you need only 1 copy of the label, press [OK] without selecting the number of copies.
 - The number of copies can also be specified by pressing a number key.
 - To prevent damage to the tape, do not touch the cutter lever while the message "正在列印" or "執行中" is displayed.
 - To cut off the label, push in the tape cutter lever on the upper-right corner of the machine.
 - Peel off the backing and apply the label.
 - You can print up to 9 copies of each label.

- **Using Print Options ([設定] + [確認])**
- [自動跳號]
- You can print many copies of the same text while increasing a selected number by 1 after each label is printed.
- Example:** To print copies of a label containing a serial number (0123, 0124 and 0125)
- [確認] + [設定] → [自動跳號] [OK] → [確認] → [3 ~ 9 連續跳號] [OK]
- [鏡像列印]
- [設定] + [確認] → [左] / [右] [鏡像列印] [OK] → [要鏡像列印嗎?] [OK]
- 123456789

- Use clear tape in [鏡像列印], so the labels can be read correctly from the opposite side when attached on glass, windows or other transparent surfaces.

Use 簡易倉頡 input Method to enter texts

This method is to input the first and last radicals of 倉頡, and then convert optional Chinese characters. Follow the steps below to convert Chinese characters word by word.

- Example "虎"**
- 1 Under 簡易倉頡 input method, type [王] [虍].
- "王" will be displayed in reverse, and at the same time the optional characters will appear on the screen. If you convert a Chinese character, it will be confirmed when you input next character.
- 2 Press [確認] or [左] / [右] to convert Chinese characters, and then press "虎".
- 3 Press [確認] or [OK].
- "虎" will be inputted.

- **Making Two Lines of Text**
- Move the cursor to where the second line starts and press [T-11]. Use 6 mm, 9 mm or 12 mm wide tape for two line text.
- 總管理 A B 1 12mm → [T-11] → 總 A B 1 6mm → [OK]
- [列印份數] → [確認]

- **Changing Label Length ([設定] + [OK])**
- [設定] → [左] / [右] [長度] [OK] → [左] / [右] [自動 /30-300mm] [OK]

- **NOTE**
- After the label is printed, cut along the printed dots (.) with scissors so that the label length matches the machine setting.
 - If a specific label length has been selected, 鎖 also appears in the LCD.

- **To Clear**
By pressing [清除], the letters will be deleted one by one.
- To delete all text and settings:
- [清除] → [左] / [右] [刪除內容格式] [OK]
- To delete text only:
- [清除] → [左] / [右] [只刪除內容] [OK]

Saving Label Files

You can save up to 9 labels and recall them for printing at a later date. A maximum of 80 characters can be saved per file. You can also edit and overwrite the stored label.

- **Save**
- [確認] → [左] / [右] [儲存] [OK] → [左] / [右] [1] [確認]

- **Print**
- [確認] → [左] / [右] [列印] [OK] → [左] / [右] [P - t o u c h] [OK] → [列印份數:] [左] / [右] 1 1 - 9 → [OK]

- **Open**
- [確認] → [左] / [右] [開啟舊檔] [OK] → [左] / [右] [P - t o u c h] [OK]

- **NOTE**
- If you try to store a label when there is already a label stored to that number, a message "要覆蓋嗎?" will appear. Press [OK] to save your new label. Press [取消] to cancel.

USING TEMPLATES

Name Label

- Example: [姓名標籤] [OK] → [選擇版面] [左] / [右] [Bill Anderson] [OK] → [文字 1] → Bill Anderson [OK] → [文字 2] → ABC Company, Inc. [OK] → [長度] [左] / [右] [自動 /30-200mm] [OK] → [左] / [右] [列印] [OK]

*Refer to the Name Label format table (A) on the enclosed insertion sheet.

- **NOTE**
- Depending on the format you have selected, the entire contents of your text may not be printed. For example, if you selected a fixed Label Length and the text is too long, an error message "超過設定長度!" will appear.
 - The templates cannot be edited.
 - Only the highlighted symbols on the enclosed insertion sheet can be used in Decorative Mode.
 - To clear all text, press [清除], then "刪除?/Clear?" appears. Press [OK] to clear. Press [取消] to cancel.
 - When you access Decorative Mode or Name Label function, your most recently printed Decorative Mode or Name Label function text and label length will be recalled.
 - Press [設定] to return to the previous step.
 - To exit the Decorative Mode or Name Label function and return to the text input screen, do one of following:

USEFUL FUNCTION KEYS

Font Key 字形

- 1 Press 字形 to select the settings to enter the text.

- [字形] → [左] / [右] Select an item [OK]

- 2 Press [左] / [右] to select the settings.

英字形	A A	HEL	A 1
		TEN	A 1
字大小	AAa	大	A
		中	A
		小	A
字寬	A A	標準	A
		× 2	A
		× 1/2	A
字體	A A	標準	A
		粗體	A
		中空	A
		陰影	A
		立體	A
		斜體	A

Vertical Settings
Press [設定] for vertical printing.

- **NOTE**
- To cancel operations, press [取消].

Frame Key 外框

Press 外框 to select the frame design.

- [外框] → [左] / [右] Select a frame [OK]

* Refer to the frame design table (B) on the enclosed insertion sheet.

- **NOTE**
- To cancel operations, press [取消].

Accessories

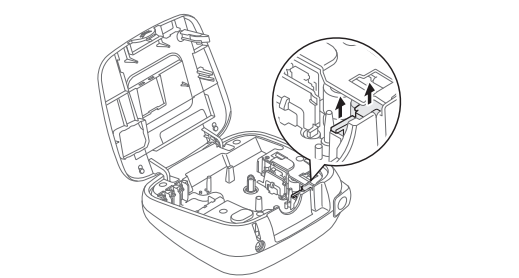
Tape Cassettes: See the included "TAPE INFORMATION"

AC Adapter: AD-24ES

Cutter Unit: TC-4 (installed in the machine; replaceable)

If the cutter blade becomes blunt after repetitive use and the tape cannot be cut cleanly, replace with new cutter unit (stock no. TC-4).

- **Replacing the Cutter Unit**
- Pull out the two sections of the cutter unit (green) in the direction of the arrows shown in the illustration.



- Install a new cutter unit. Push it in until it snaps into place.

- ⚠ Do not touch the cutter blade directly with your fingers.

Decorative Mode (Does not support Traditional Chinese)

This function allows you to create various name labels using the built-in templates.

- Example: [姓名標籤]
- [設定] → [Layout] [左] / [右] [Text] → ABCDEF [OK] → [長度] [左] / [右] [自動 /30-200mm] [OK] → [Print] [OK]

* Refer to the Decorative Mode format table (C) on the enclosed insertion sheet.

- a) Press [取消].
- b) Press [左] / [右] to select [結束/Cancel], and then press [OK].
- These features are only available when using 12 mm wide tape cassettes.
 - The maximum label length is 200 mm for Decorative Mode and Name Label function.
 - When [自動/Auto] is selected for "長度/Length", the label will automatically adjust to the correct length for printing the text one time.
 - Press [設定/Menu] to return to the [自動 /Auto] setting for "長度/Length" mode.

Symbol Key 符號

Press 符號 to select various symbols.

- [符號] → [左] / [右] Select category [OK] → [左] / [右] Choose a symbol [OK]

*Refer to the table of symbols (D) on the enclosed insertion sheet for a list of available symbols.

- **NOTE**
- To cancel operations, press [取消].

Resetting the P-touch

You can reset the P-touch labeler when you want to initialize the settings, or in the event the P-touch labeler is not working properly.

- Turn off the P-touch labeler, hold down [確認] and [取消] and then press [設定] to turn the P-touch back on.**
- Release [確認] and [取消].**
The P-touch labeler turns on with the internal memory reset.

- **NOTE**
- All text, settings and stored files are cleared.

Specifications

Dimensions: Approx. 165 (W) × 155 (D) × 68 (H) mm (W × D × H)

Weight: Approx. 490 g (without batteries and tape cassette)

Power supply: Six AAA alkaline batteries (LR03)
Six AAA Ni-MH batteries (HR03; sold separately)
AC adapter (AD-24ES)

Tape cassette: Brother TZe tape (width) 3.5 mm, 6 mm, 9 mm, 12 mm

Visit us at <http://support.brother.com/>