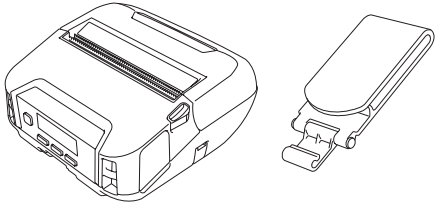
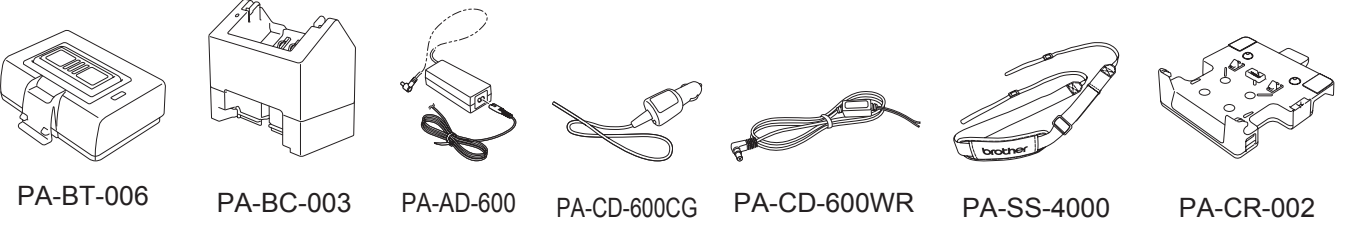


Bundled Items



Accessories



RJ-4250WB/4230B

English

- Be sure to read this document before using the printer.
- We recommend that you keep this document nearby for future reference.

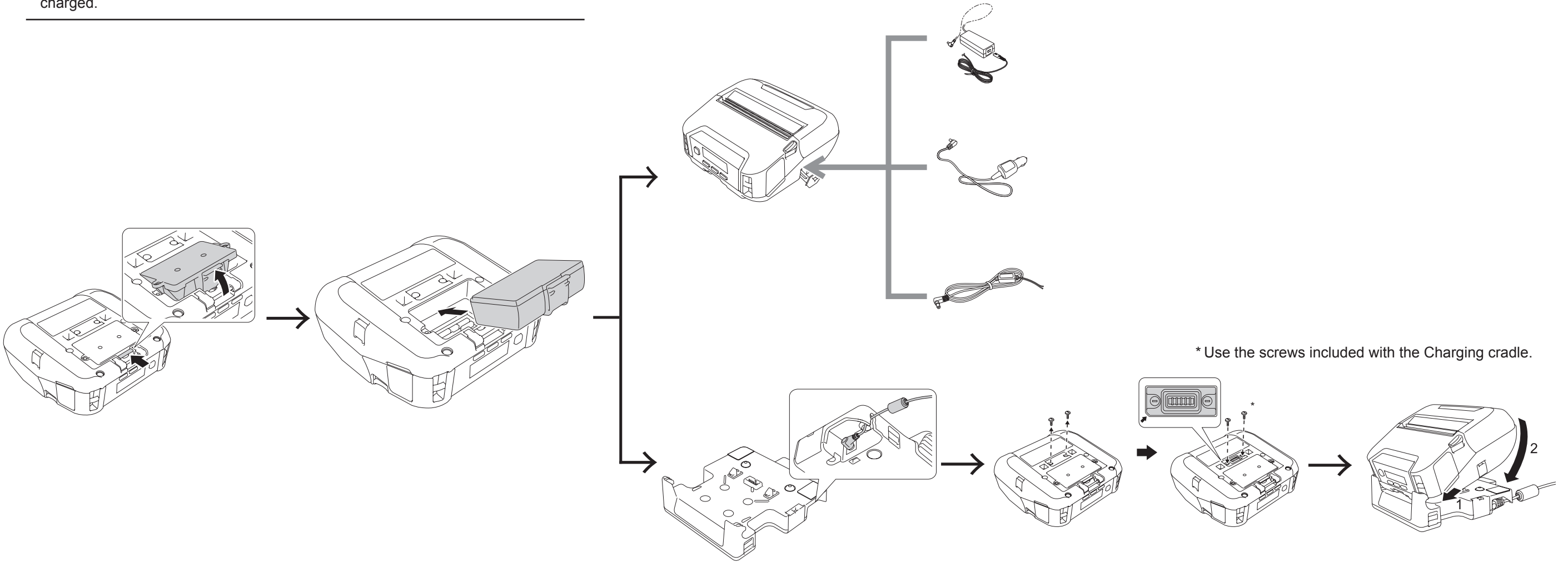
- For servicing, adjustments or repairs, contact Brother customer service or your local Brother dealer.
- If the printer operates abnormally or any error occurs, turn off the printer, disconnect all cables and contact Brother customer service or your local Brother dealer.
- The available supplies may vary depending on the country or region.
- The components included in the box may differ depending on your country or region.
- Unauthorised duplication or reproduction of any or all contents of this document is prohibited.
- Brother reserves the right to make changes without notice in the specifications and materials (including but not limited to the manuals) (hereinafter "materials"). We shall not be responsible for any damages (including consequential) caused by reliance on the materials presented, including but not limited to typographical and other errors relating to the publications.
- For FAQs, Troubleshooting, and to download software, command reference and manuals, visit [support.brother.com](http://support.brother.com)
- For system developers, see the Brother Developer Center: [www.brother.com/product/dev/](http://www.brother.com/product/dev/)

# 1 Power supply

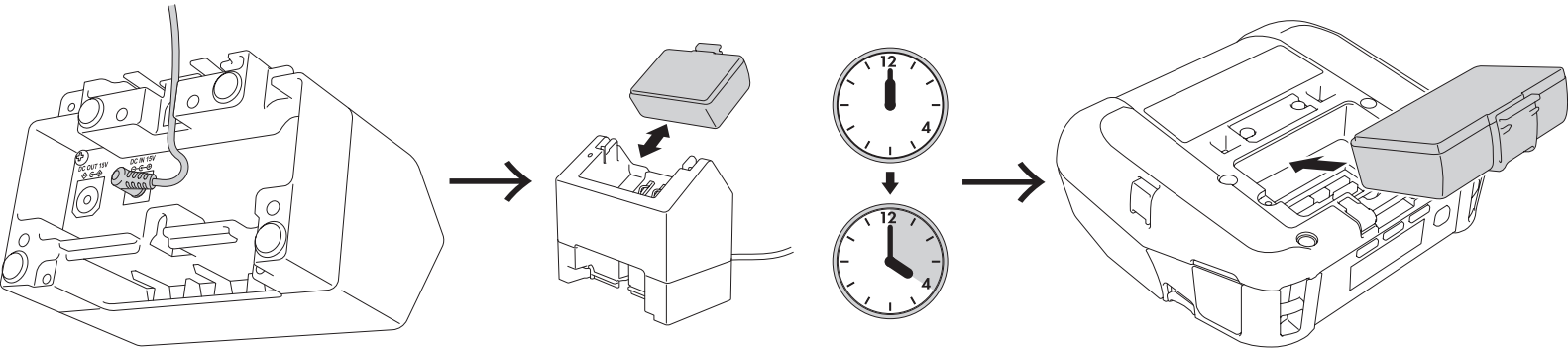
■ With battery



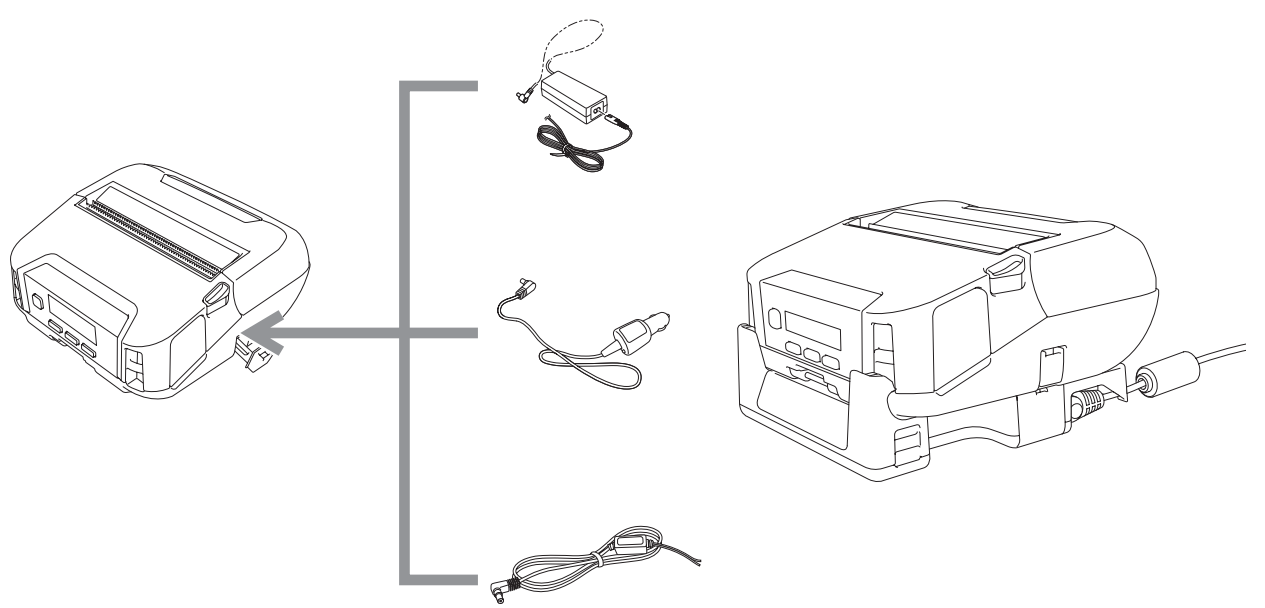
- Before using the printer for the first time, make sure you charge the battery.
- The LED will turn orange when the battery is charging, and green when fully charged.



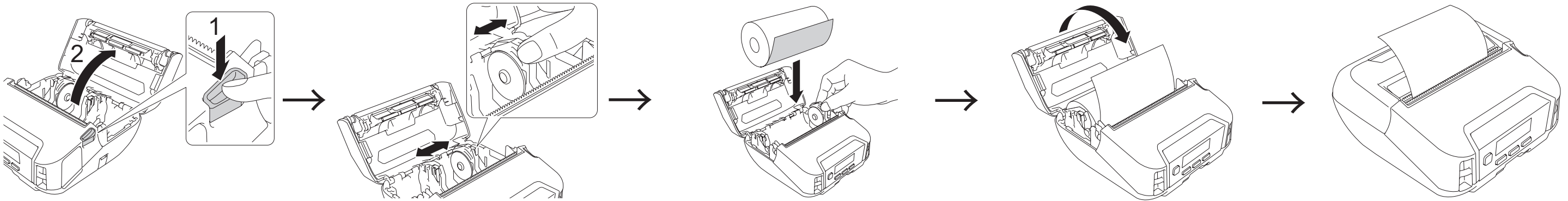
■ With battery charger



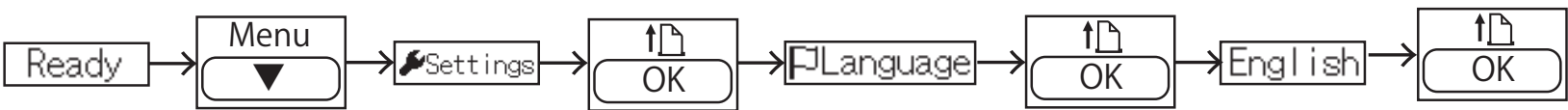
■ Without battery



# 2 Insert RD roll

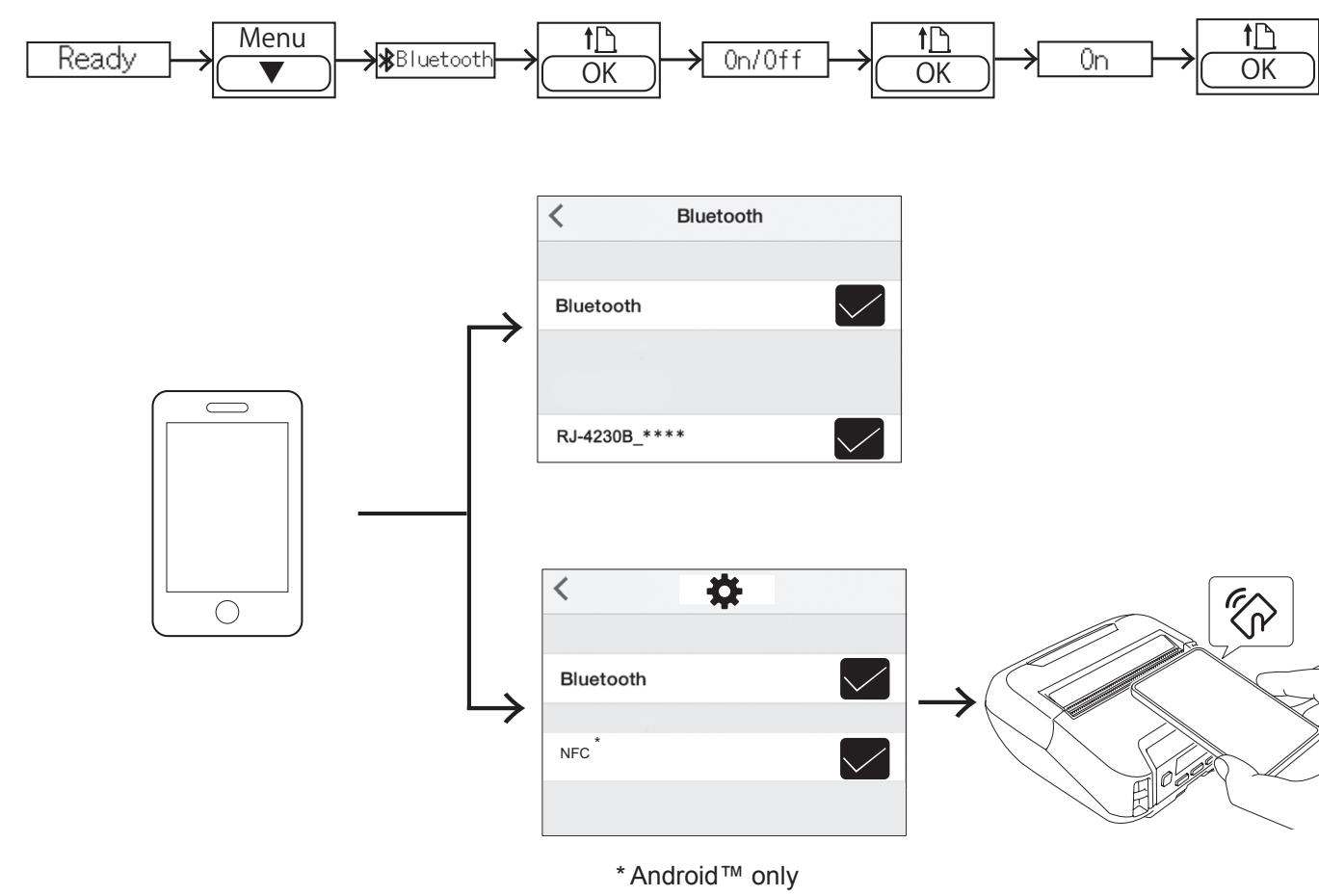


# 3 Select your language

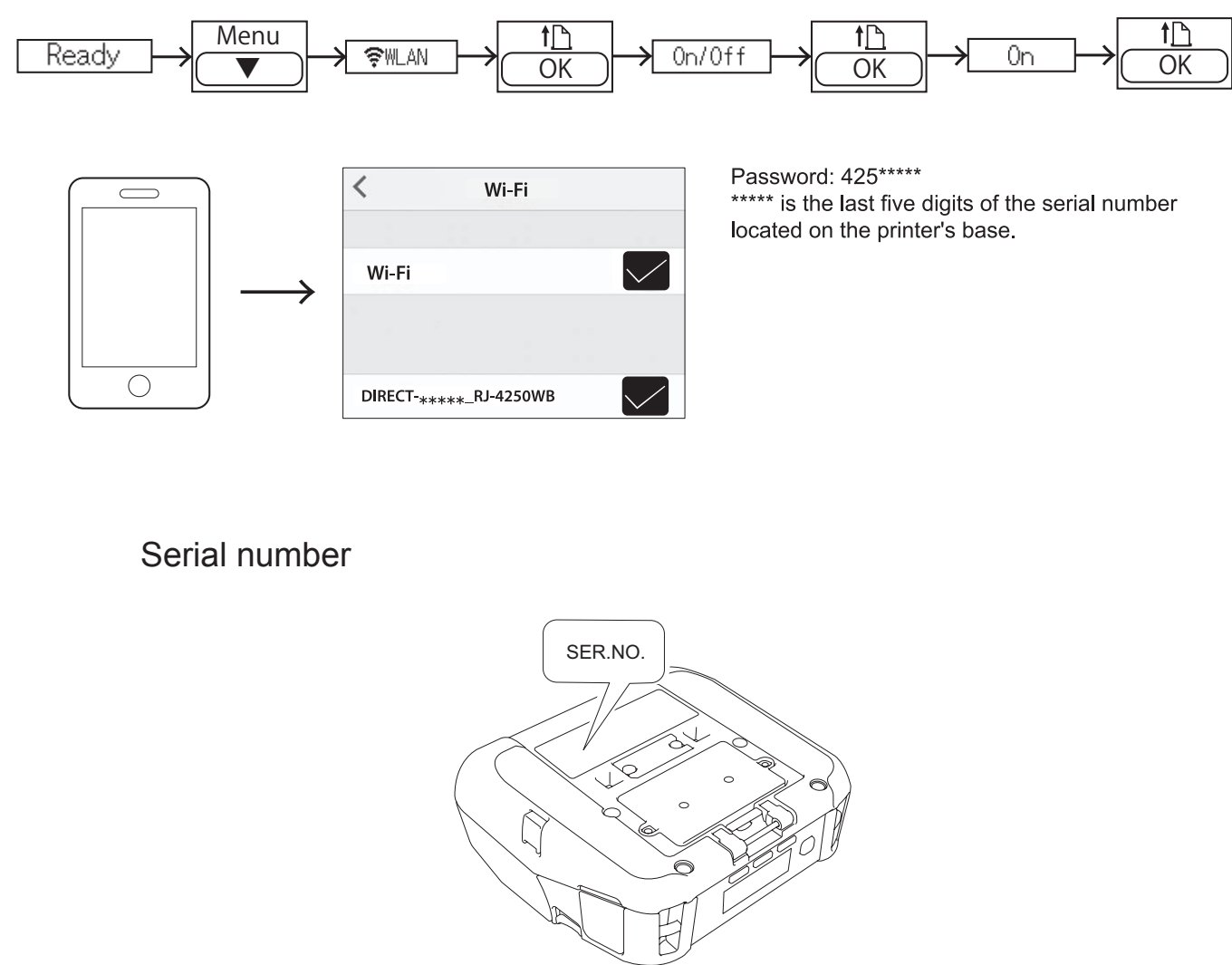


4 Connect your device

Mobile (Bluetooth)



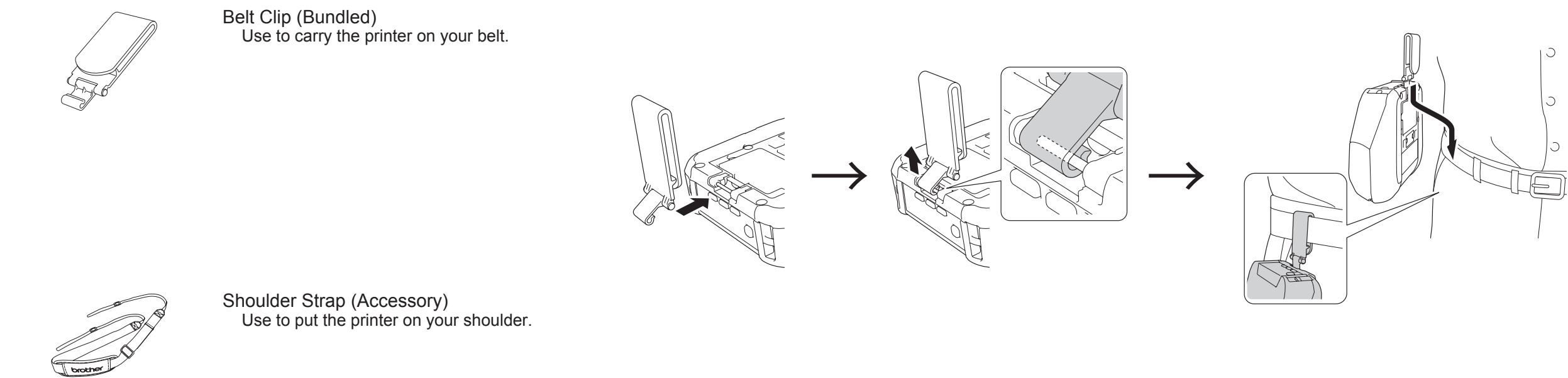
Mobile (Wi-Fi)



Windows

Visit [install.brother](#) and download the latest Software/Documentation Installer.

5 Bundled items and accessories



6 LED indicators

LED indicator	Status
Unlit	<ul style="list-style-type: none"><li>Power off</li><li>Charging complete (when power is turned off)</li></ul>
Green	<ul style="list-style-type: none"><li>Battery level: Half or more</li><li>Charging complete (when power is turned on)</li></ul>
Orange	Charging
Red	Boot mode
Green (flashing)	Sleep mode
Orange (flashing)	Battery level: low
Red (flashing)	<ul style="list-style-type: none"><li>Any error</li><li>Battery level: empty</li></ul>

7 Troubleshooting

Problem	Solution
The printer does not print, or there is a printing error.	<ul style="list-style-type: none"><li>Is the cable loose? Check that the cable is connected securely.</li><li>Is the roll installed correctly? If not, remove the roll and reinstall.</li><li>Is there enough roll remaining? If not, install a new roll.</li><li>Is the roll compartment cover open? Check that the roll compartment cover is closed.</li><li>Has a print error or transmission error occurred? Turn off the printer and on again. If the problem still occurs, contact your Brother dealer.</li></ul>
The printer does not feed paper.	<ul style="list-style-type: none"><li>Is there dirt or lint on the roller preventing it from rolling freely? Clean the roller.</li><li>Check that the ejection path of the paper is not blocked.</li><li>Check that the roll is set correctly by removing the roll and installing it again.</li><li>Ensure that the roll compartment cover is closed correctly.</li></ul>
The LED indicator or the LCD is not lit.	<ul style="list-style-type: none"><li>Is the battery inserted correctly? Check that the battery is inserted correctly. If it is, check that the battery has sufficient charge remaining.</li><li>Is the adapter cord connected properly? Check that the cord is connected correctly.</li><li>If the LED indicator or the LCD still does not light up, contact your Brother dealer.</li></ul>
Printed paper contains streaks or poor quality characters, or paper is not fed correctly.	<ul style="list-style-type: none"><li>Is the print head or roller dirty? Although the print head generally remains clean under normal use, lint or dirt from the roller may become stuck on the printer head. If this occurs, clean the roller.</li></ul>