



SAP® Device Types for Brother Label Printers

Version 10

Contents

1. Introduction.....	1
2. Get the Device Type.....	1
3. Import a Device Type into the SAP System.....	1
4. Create Output Devices.....	3
5. Test Smart Forms.....	8
5.1 Create System Barcode.....	8
5.2 Create a Smart Style	13
5.3 Define Barcodes	15
5.4 Define Font	17
5.5 Define Paragraphs.....	19
5.6 Create a Test Smart Form	22
5.7 Add a Window.....	25
5.8 Add Text to a Window	26
5.9 Add a Graphic into the Window	29
5.10 Performing the Test.....	33
6. Model / Device Type List.....	37

Important Notice

Brother reserves the right to make changes without notice in the specifications and materials (including but not limited to the manuals) (hereinafter “materials”). We shall not be responsible for any damages (including consequential) caused by reliance on the materials presented, including but not limited to typographical and other errors relating to the publications.

Trademarks

SAP and other SAP products and services mentioned herein as well as their respective logos are trademarks or registered trademarks of SAP SE (or an SAP affiliate company) in Germany and other countries.

1. Introduction

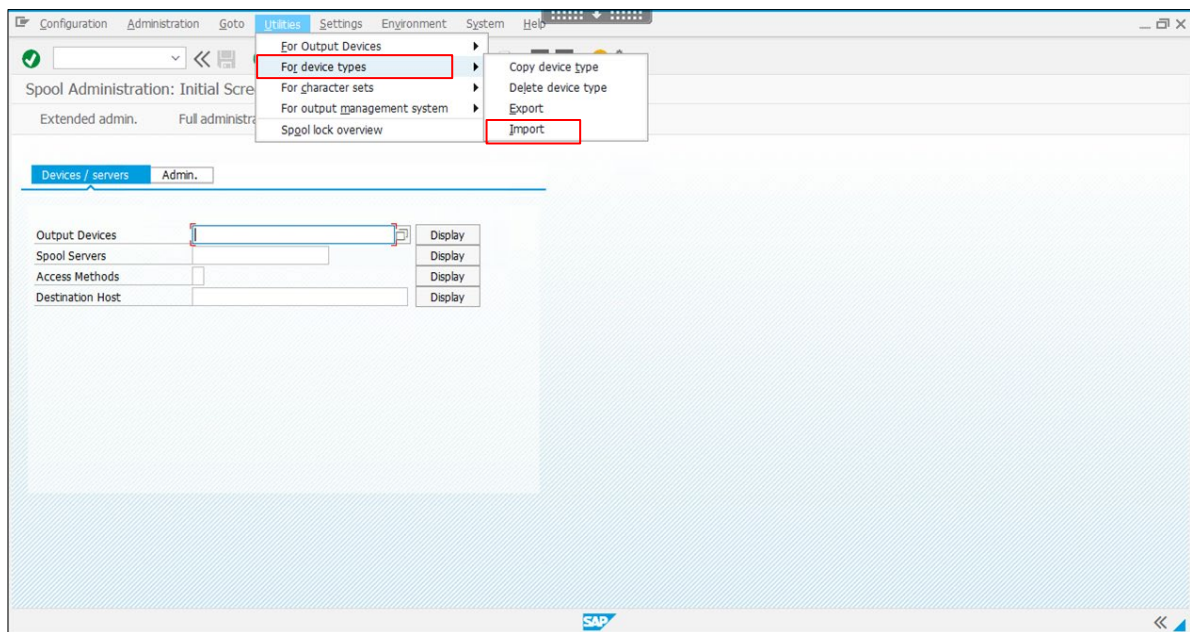
Before you use your Brother label printer to print from SAP software, make sure you have imported the correct Device Type information into the SAP system.

2. Get the Device Type

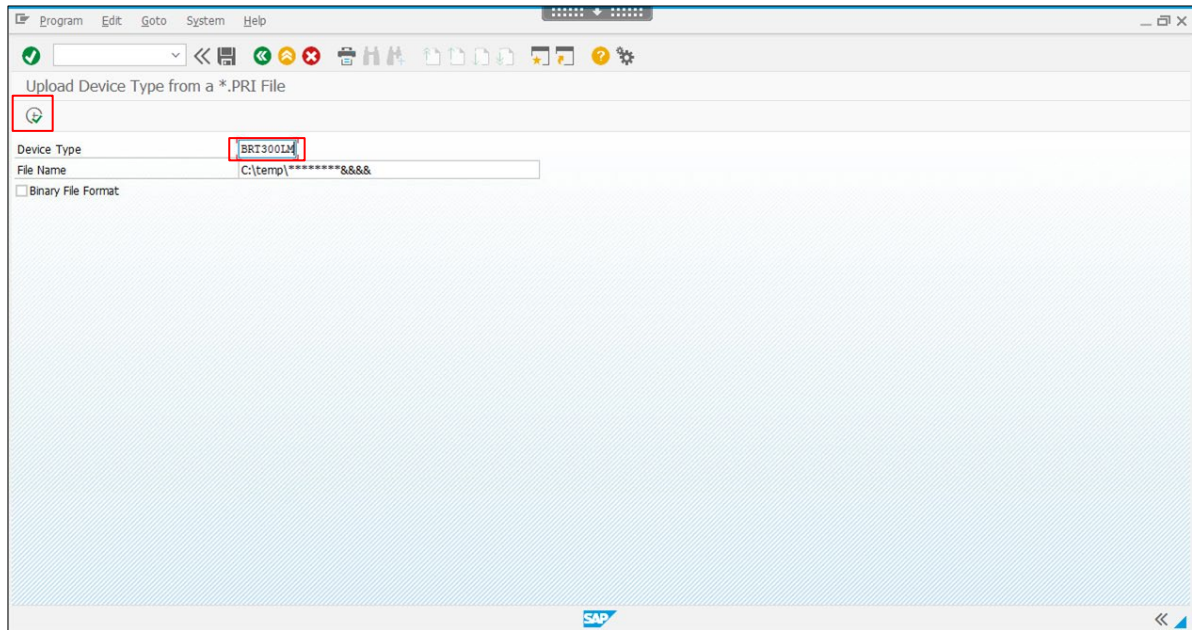
1. Go to the SAP One Support Launchpad website at <https://launchpad.support.sap.com>.
2. Log on using your SAP login and password.
3. Download and import the Device Type, if necessary.
(2749209 - Printer Vendor Wizard Note : Brother (label printer))

3. Import a Device Type into the SAP System

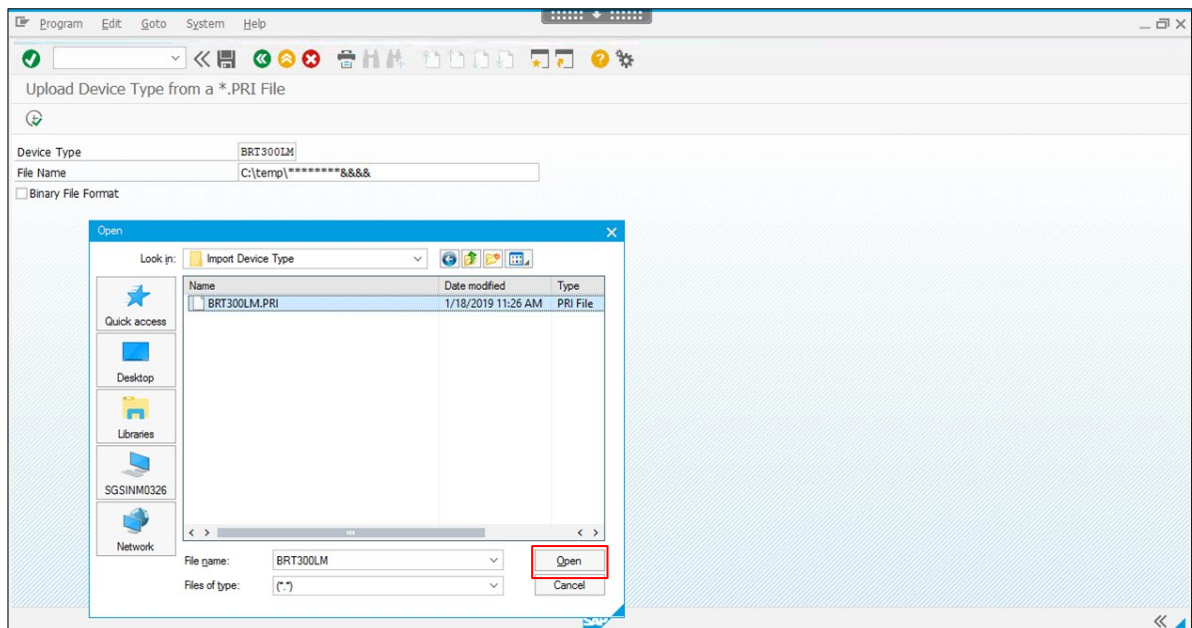
1. From the SAP system, select **Utilities > For device types > Import** from the menu bar.



2. Enter the file name you want in the Device Type field, and then click the **Execute** (🔄) button.

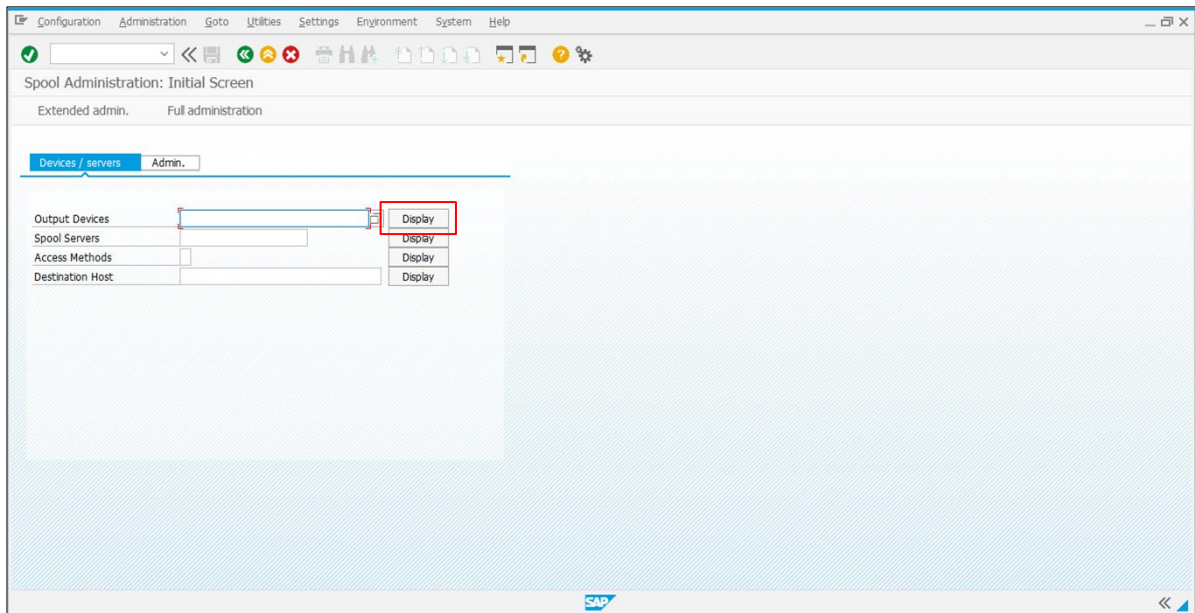


3. Select the Device Type file you want to import, and then click **Open**.

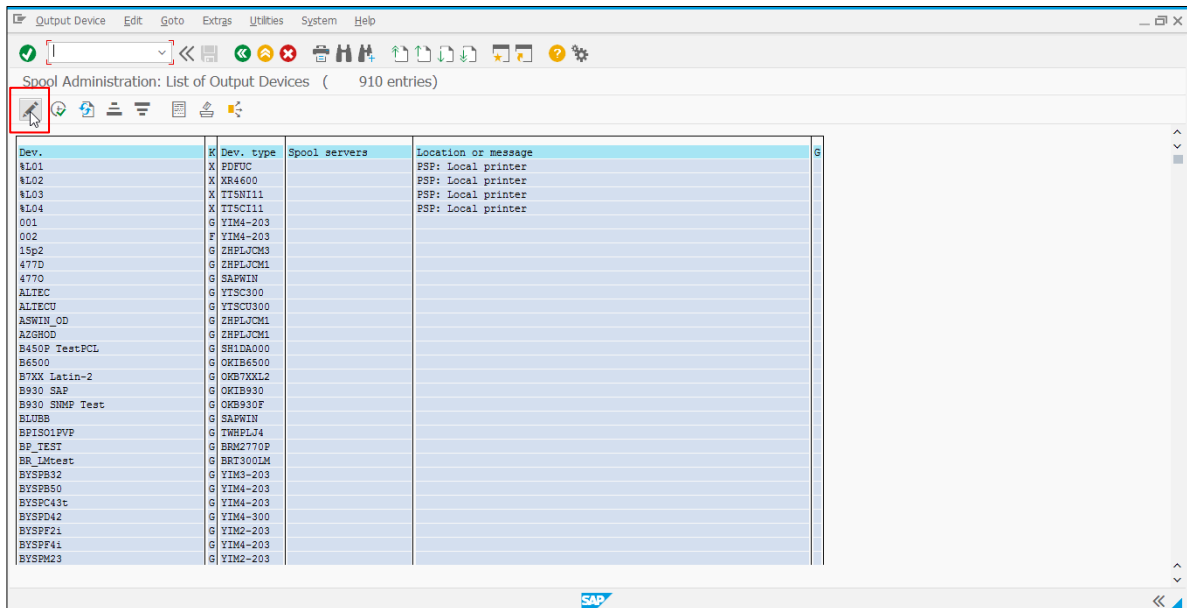


4. Create Output Devices

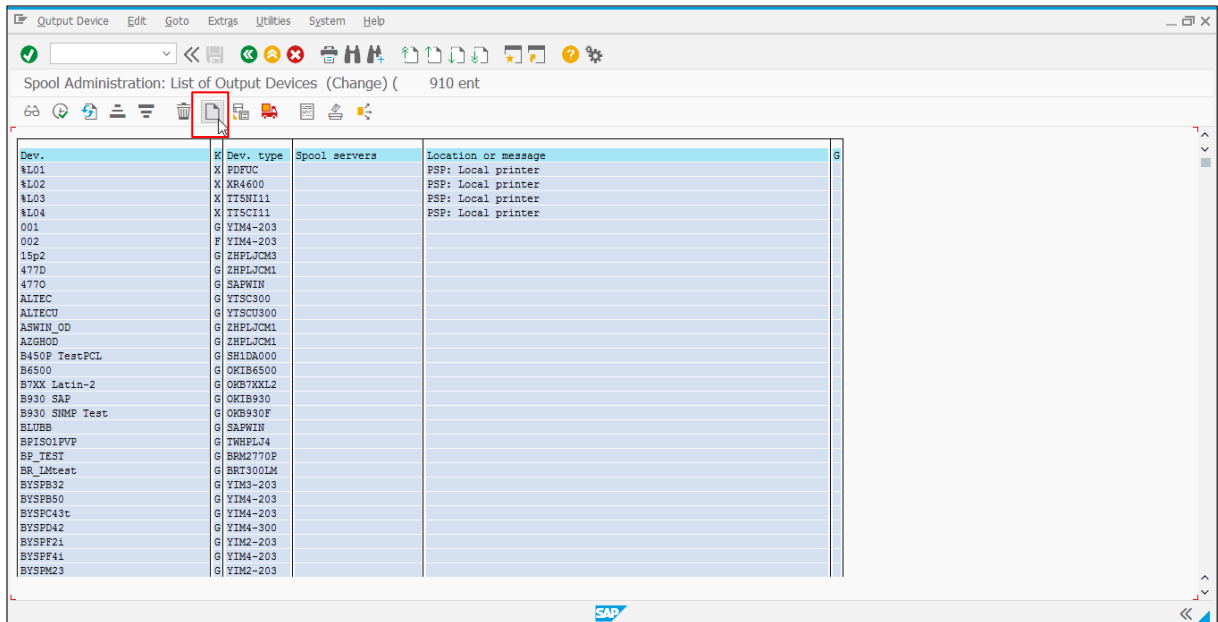
1. Click the **Display** button next to **Output Devices**.



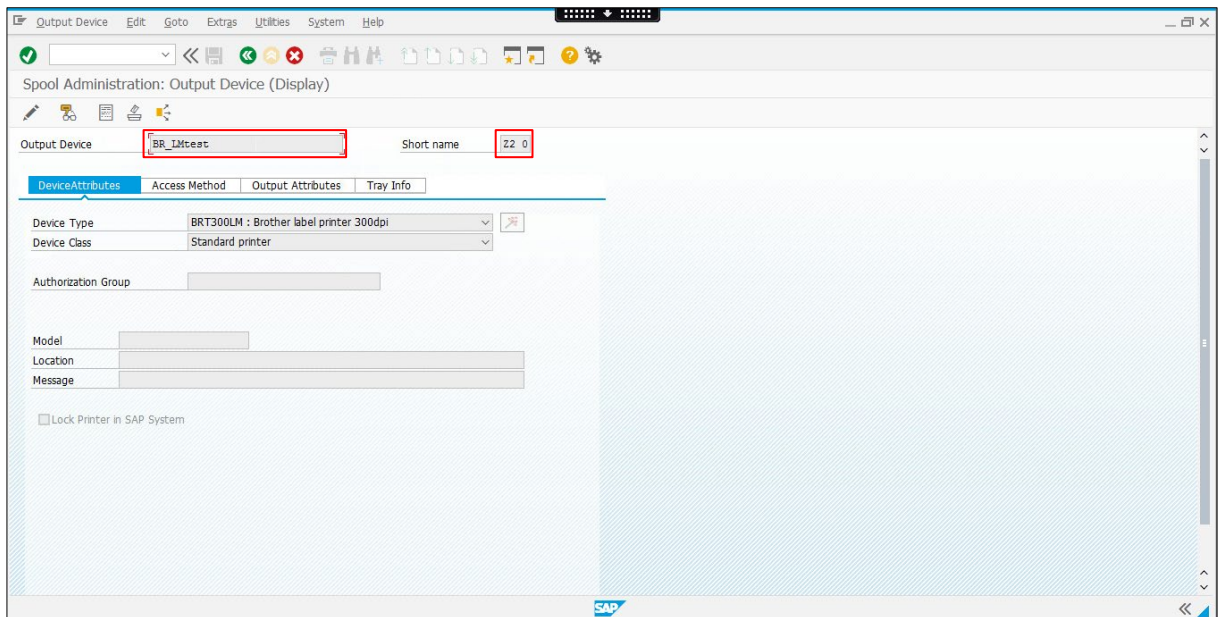
2. The list of Output Devices appears. Click the **Edit** (🔧) button.




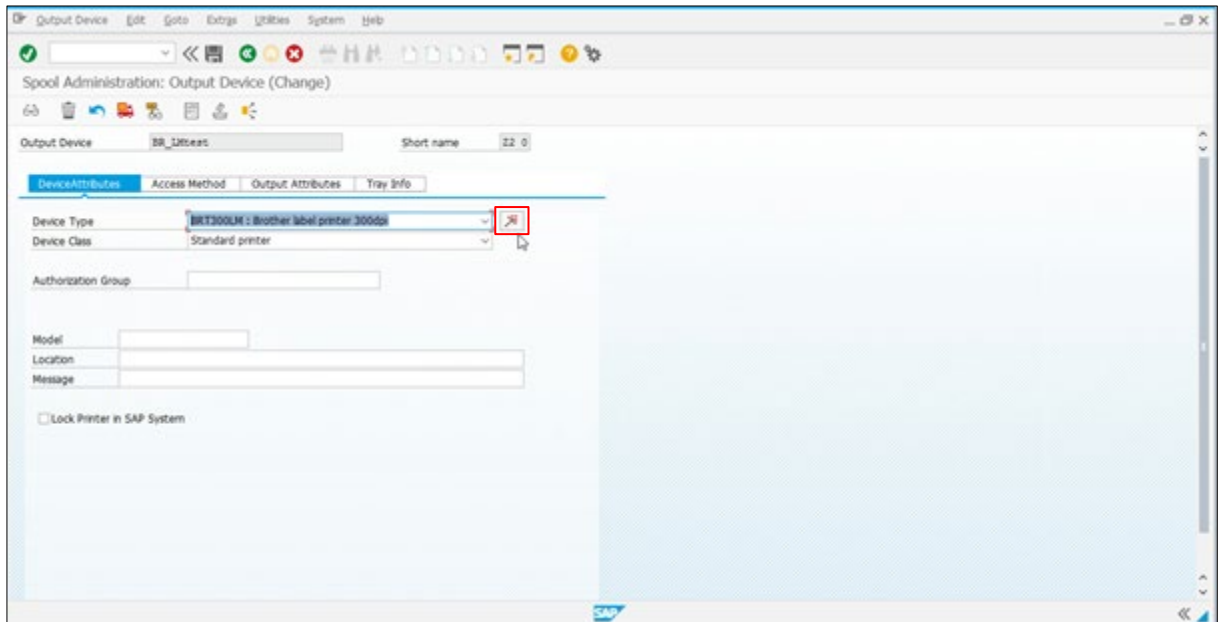
3. Click the **Create** () button.



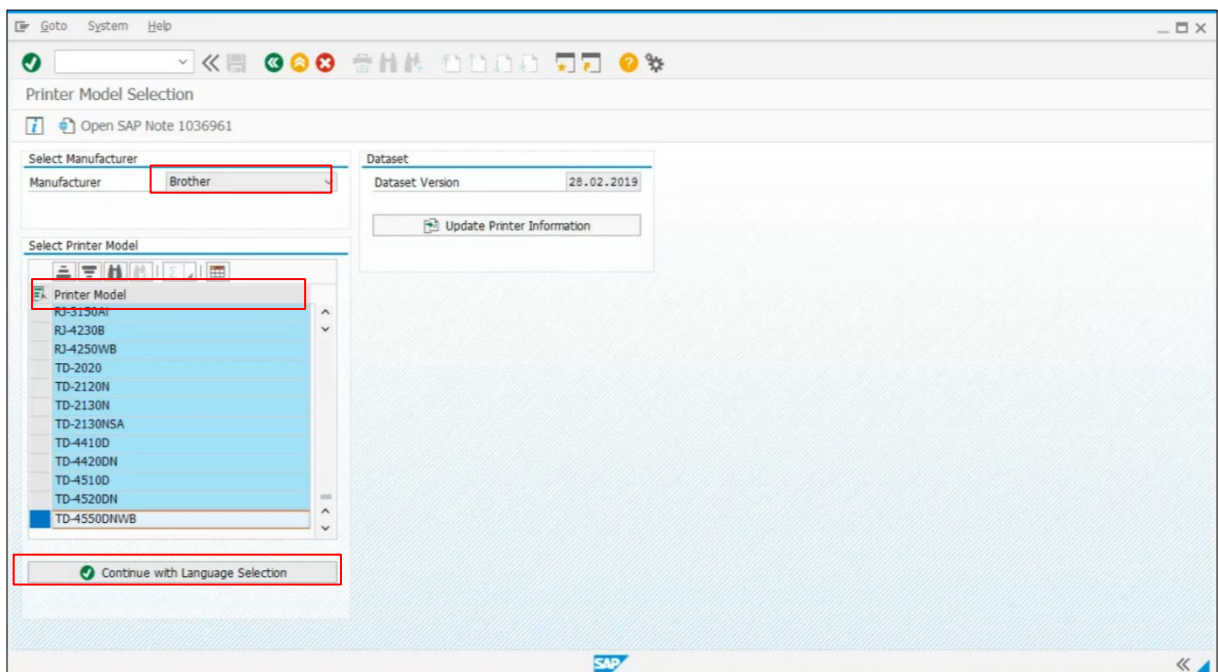
4. Type the **Output Device** name and the **Short name**.



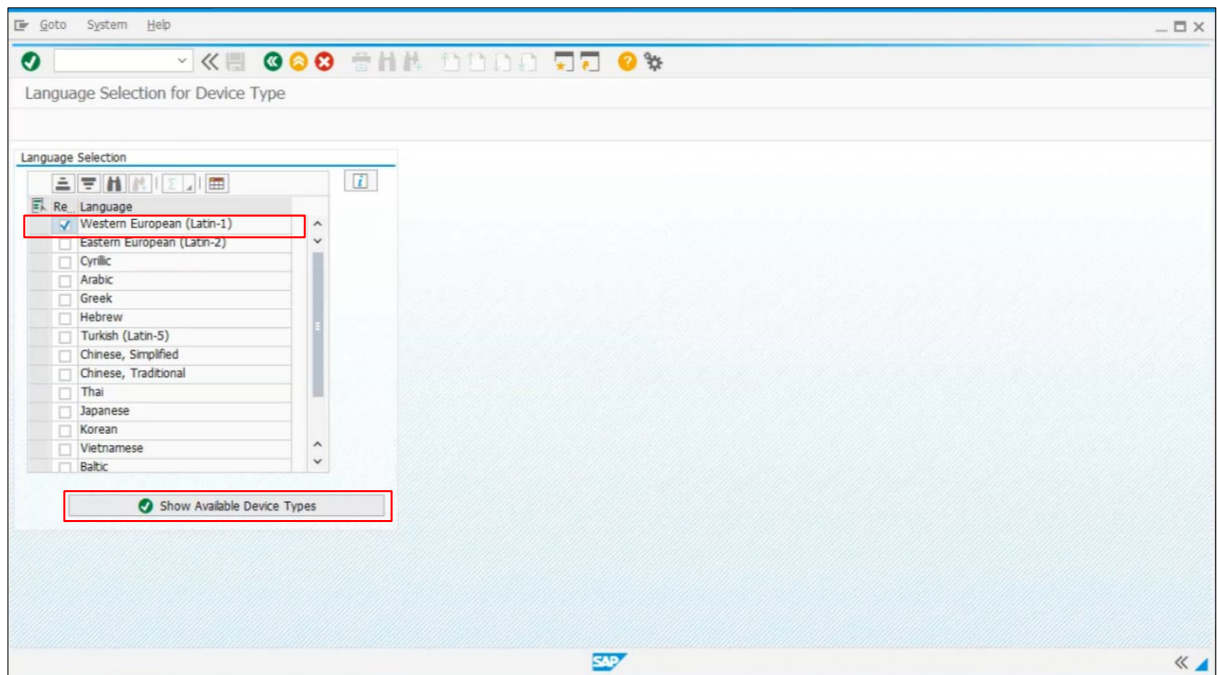
5. Click the **Device Type Selection** () button to select the **Device Type**, or use the **Device Type** drop-down menu.



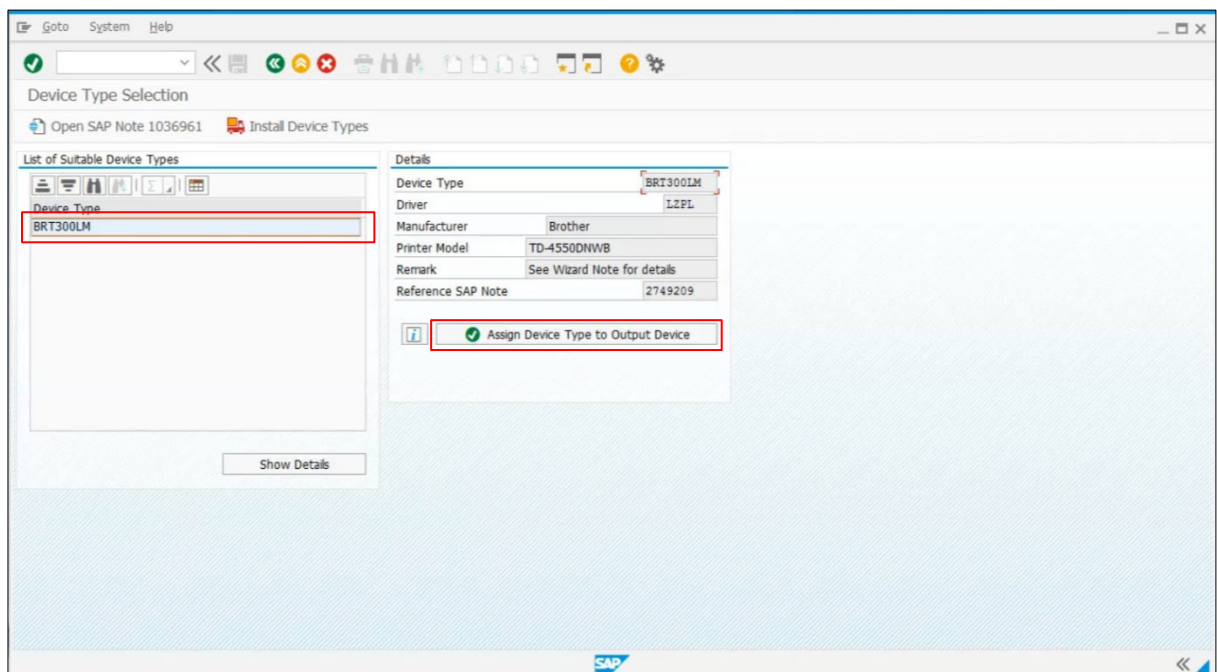
6. Select "Brother" from the **Manufacturer** drop-down menu, and the applicable printer from the **Printer Model** drop-down menu. Click the **Continue with Language Selection** button.




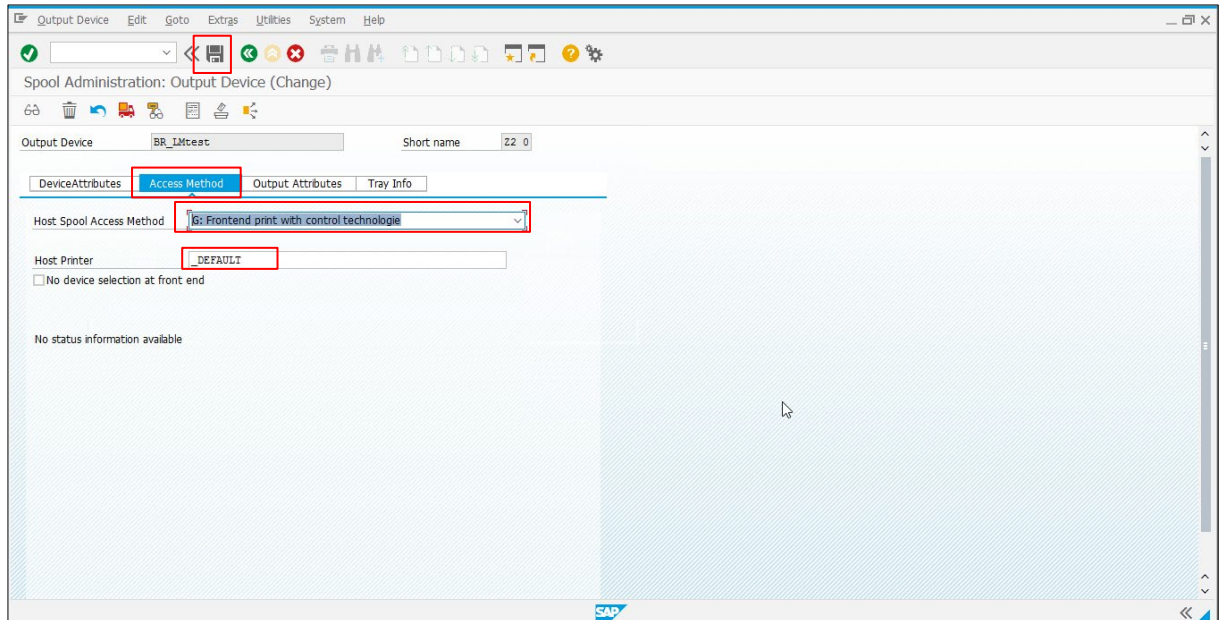
7. Select the applicable language from the **Language** drop-down menu. Click the **Show Available Device Types** button.



8. Select the Device Type, and then click the **Assign Device Type to Output Device** button.



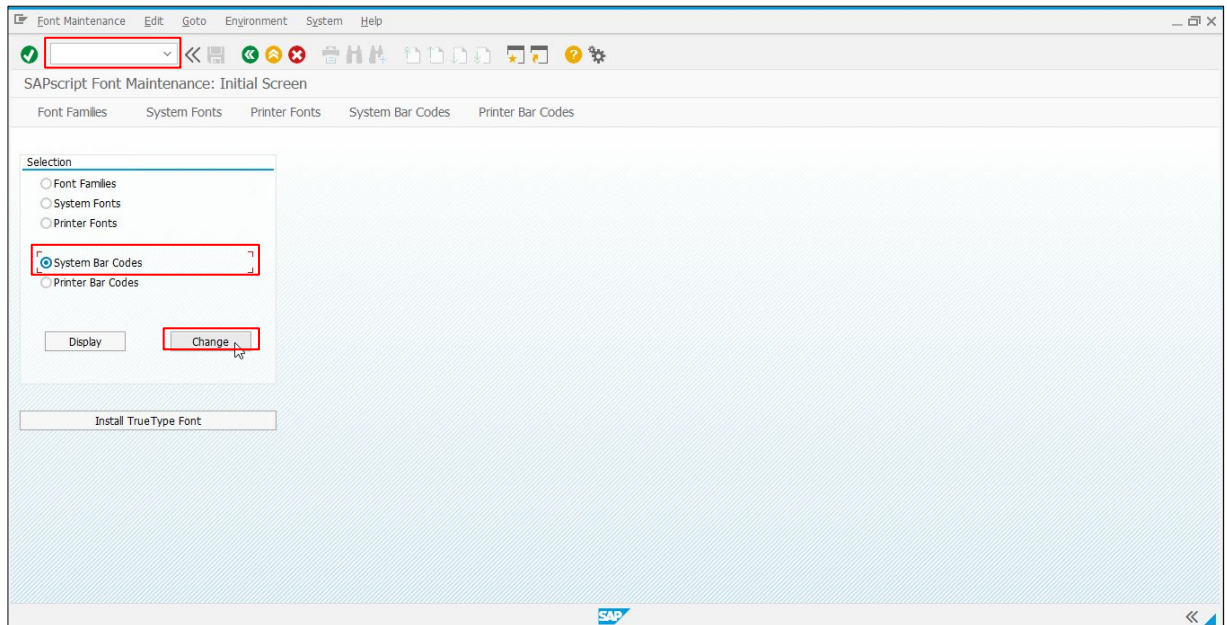
9. Go to the **Access Method** tab, and then select **G:Frontend print with control technologie** from the **Host Spool Access Method** drop-down menu.
10. Go to the **Host Printer** field, and then type **_DEFAULT**.
11. Click the **Save** () button to finish.



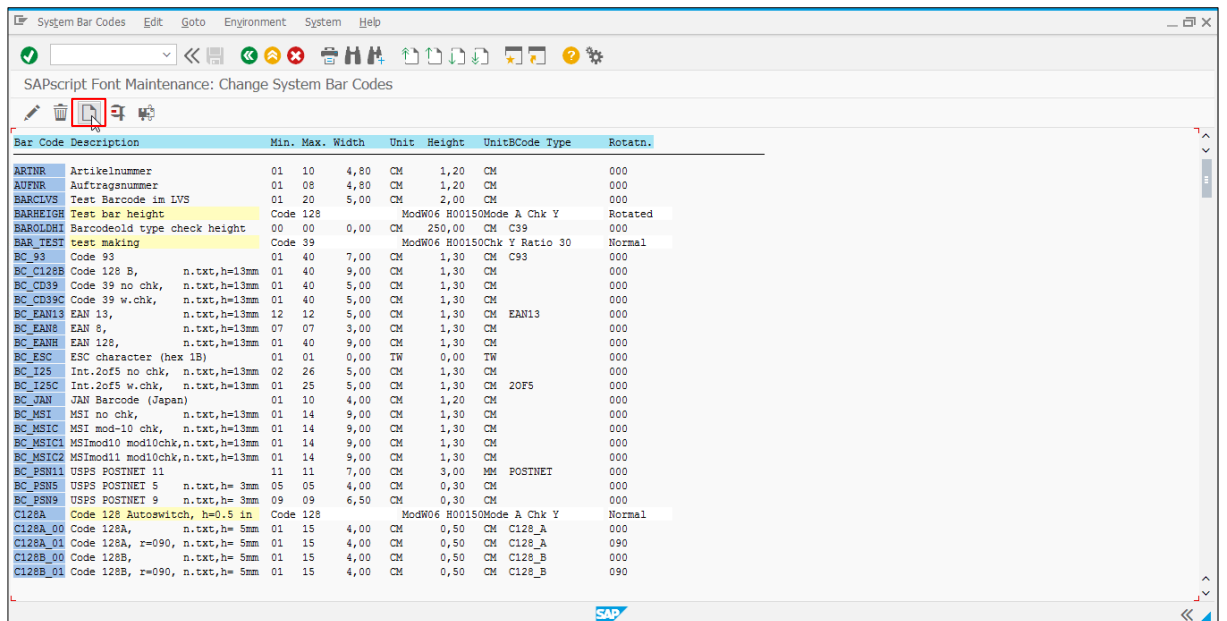
5. Test Smart Forms

5.1 Create System Barcode

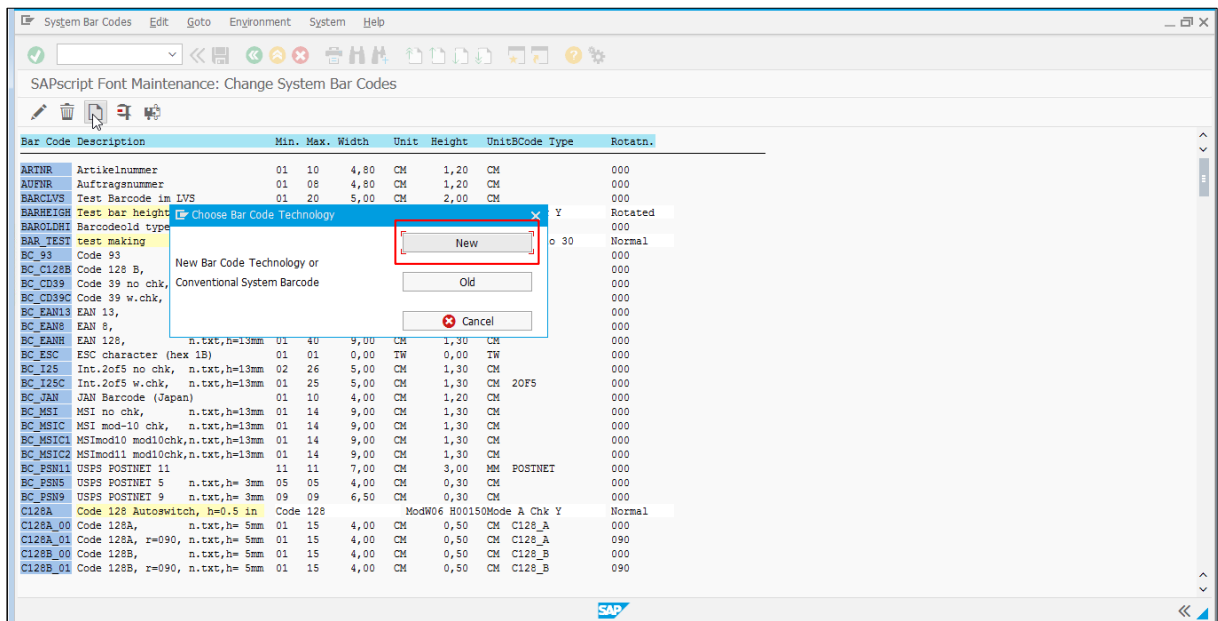
1. In the Search field, enter **SE73** to locate the **Selection** menu. Select the **System Bar Codes** radio button and click the **Change** button.



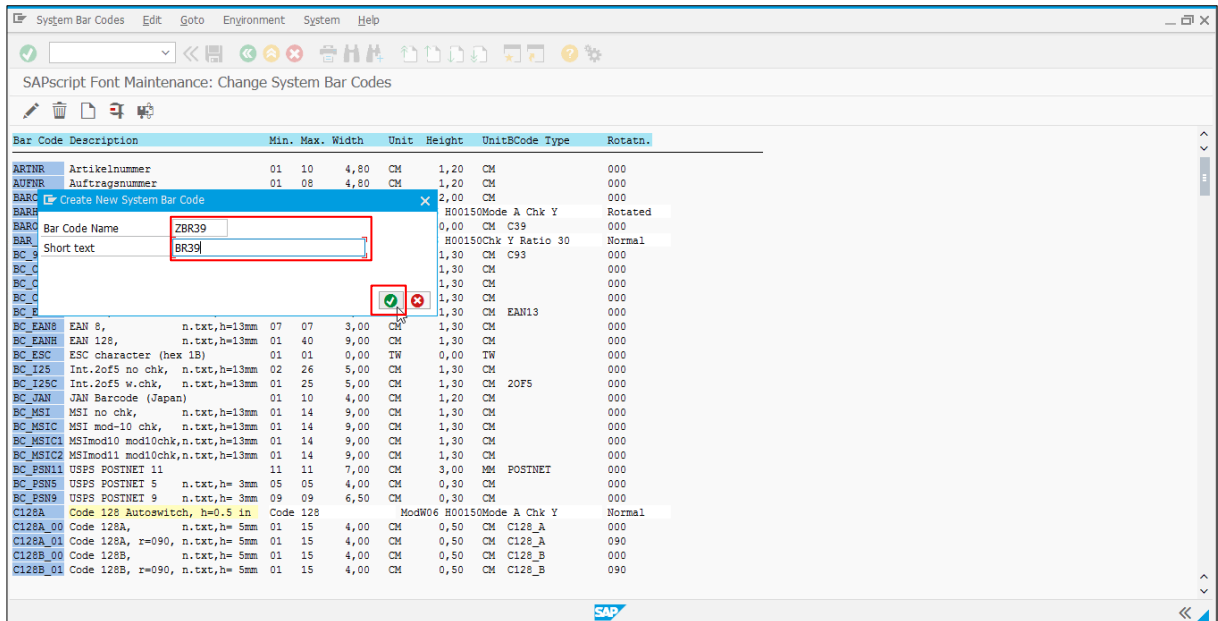
2. Click the **Create** (📄) button.



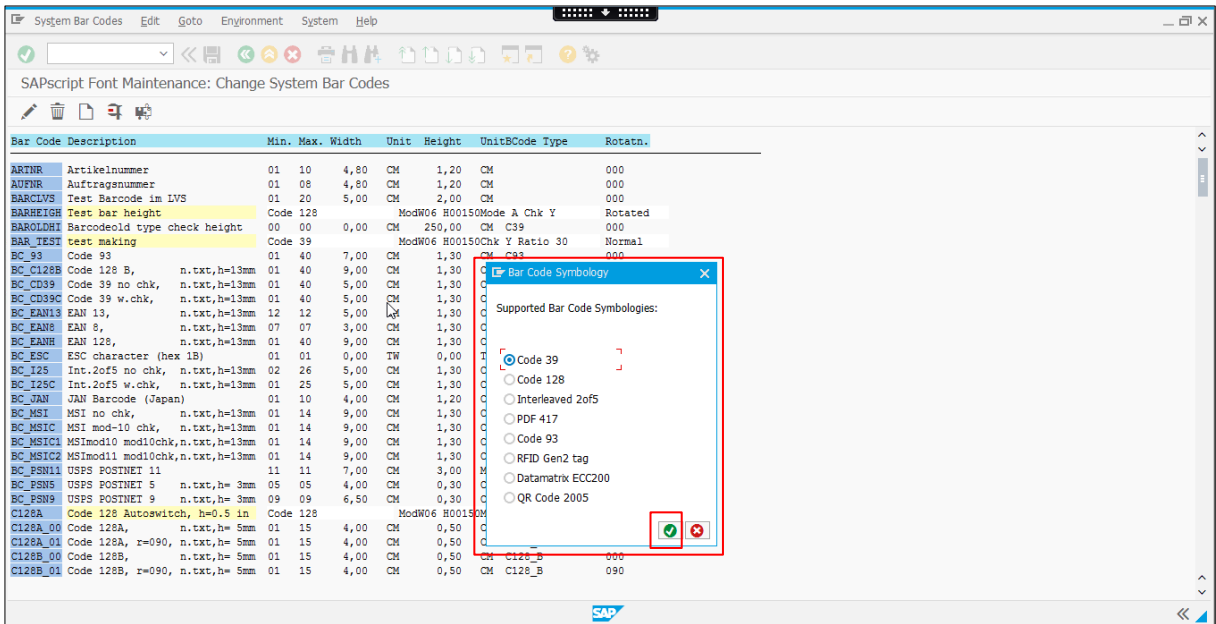
- When the Choose Bar Code Technology dialog box appears, click the **New** button.



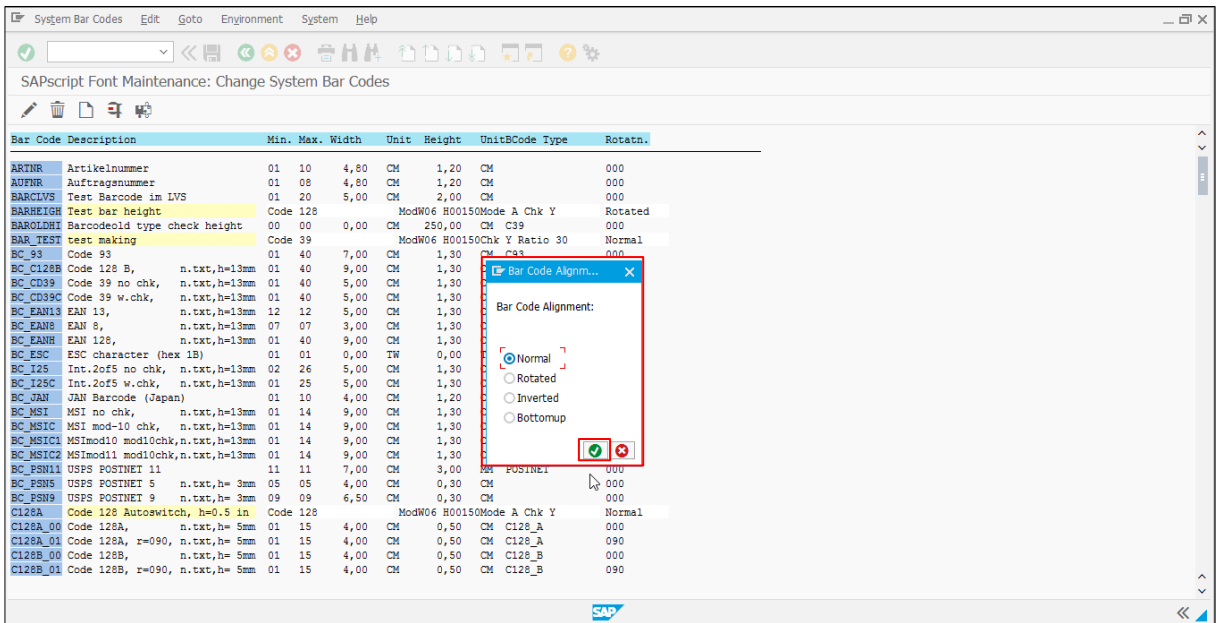
- Type the **Bar Code Name** (for example: ZBR39), and **Short text** (for example: BR39). Click the **Continue** (✓) button.



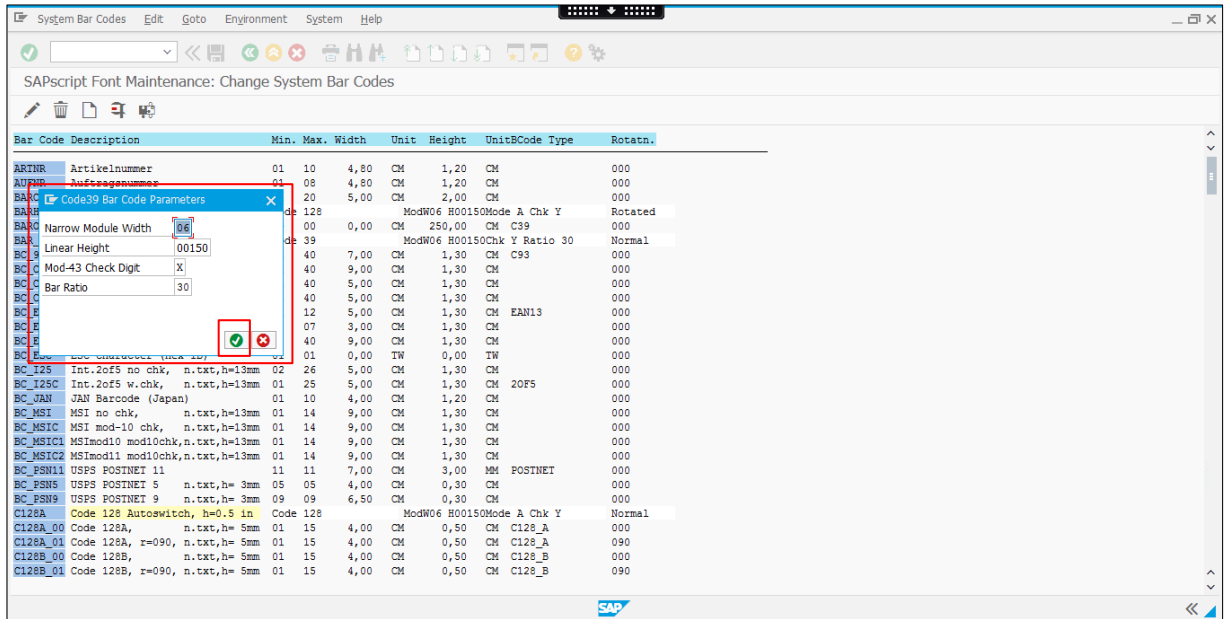
- Select the **Bar Code Type** radio button (for example: Code 39), and then click the **Continue** (🟢) button.



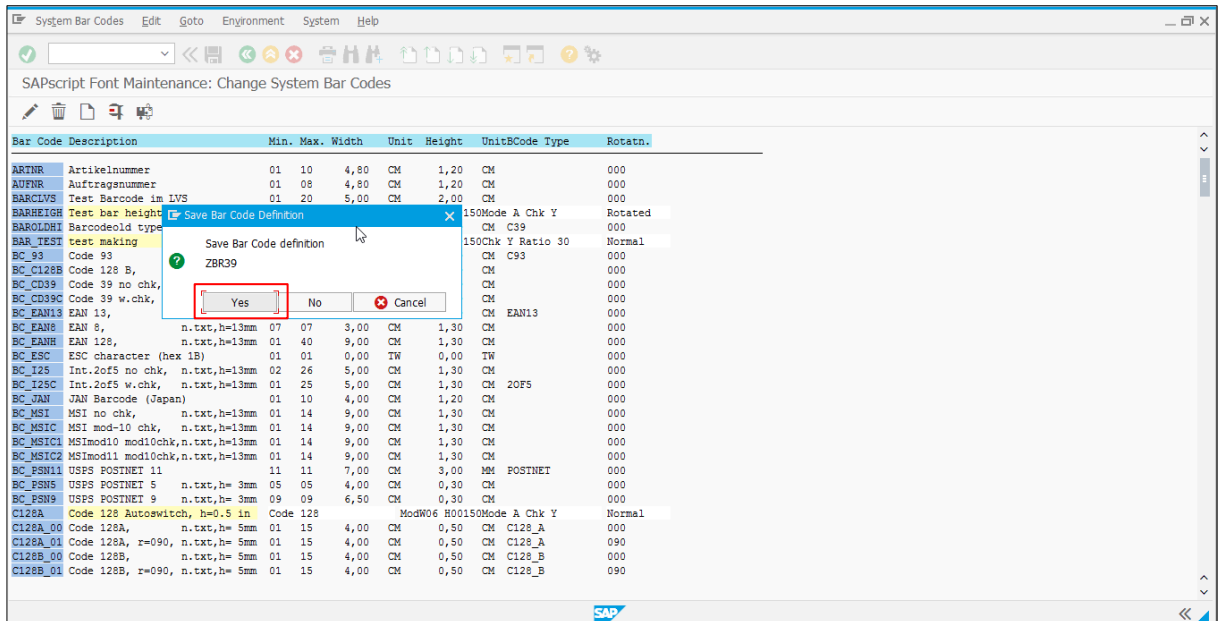
- Select the **Bar Code Alignment** radio button (for example: Normal), and then click the **Continue** (🟢) button.



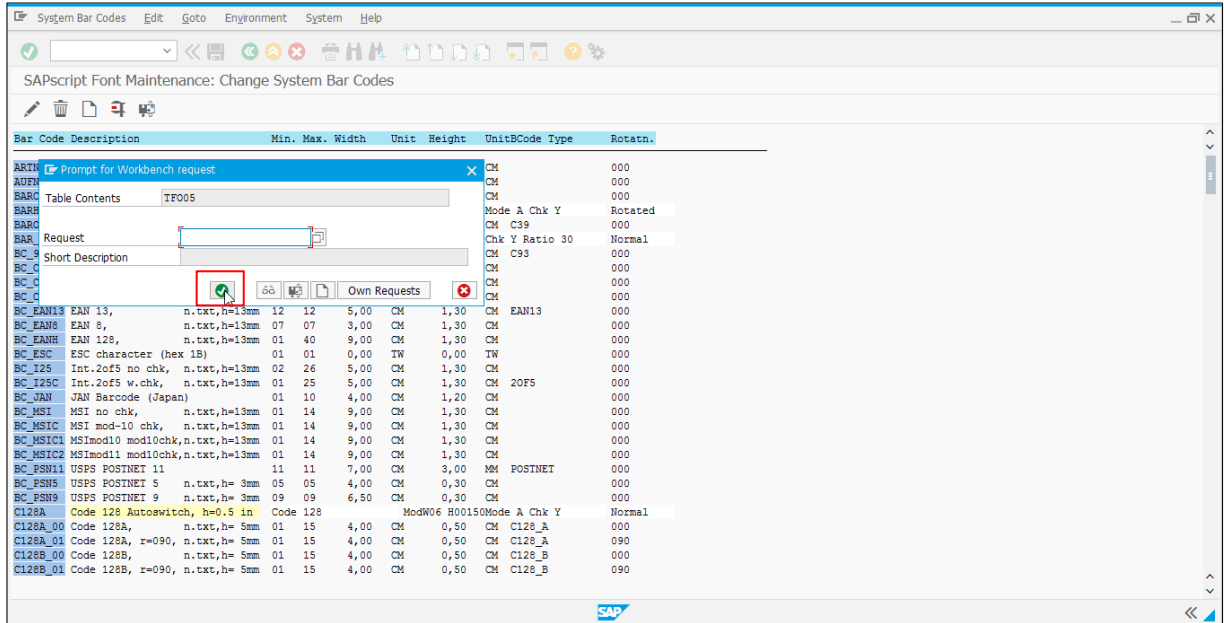
- Specify the Bar Code Parameters in the **Narrow Module Width** field, and then click the **Continue** (✔) button.



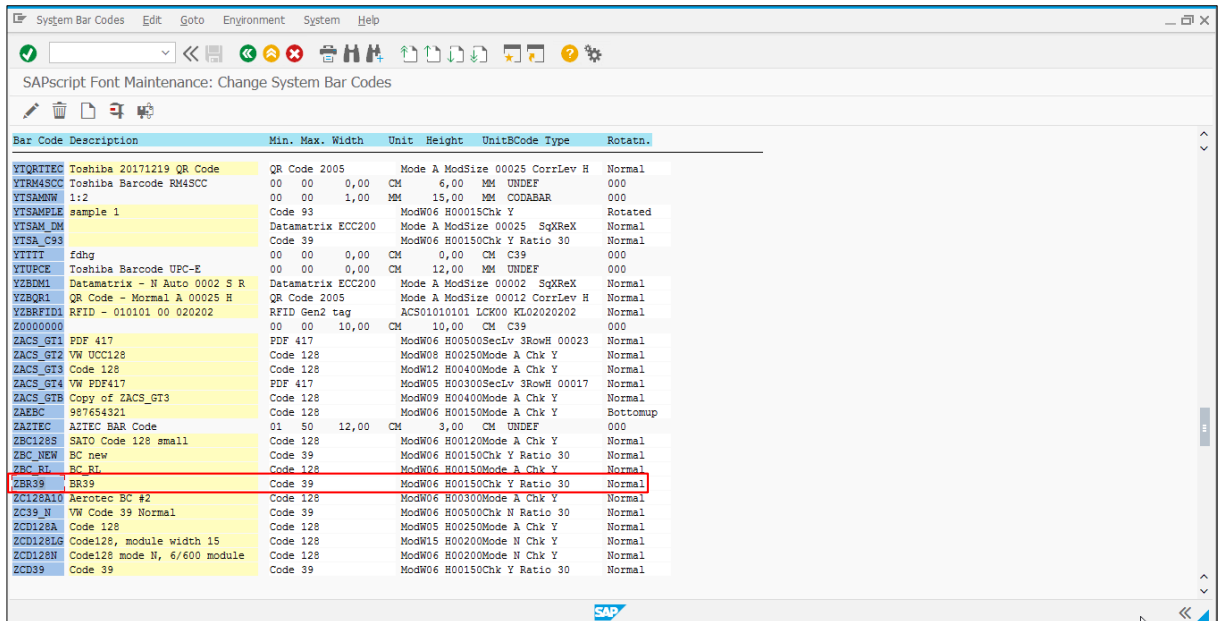
- Click the **Yes** button to save the Bar Code Definition.



- When the Prompt for Workbench request dialog box appears, click the **Continue** (🟢) button.

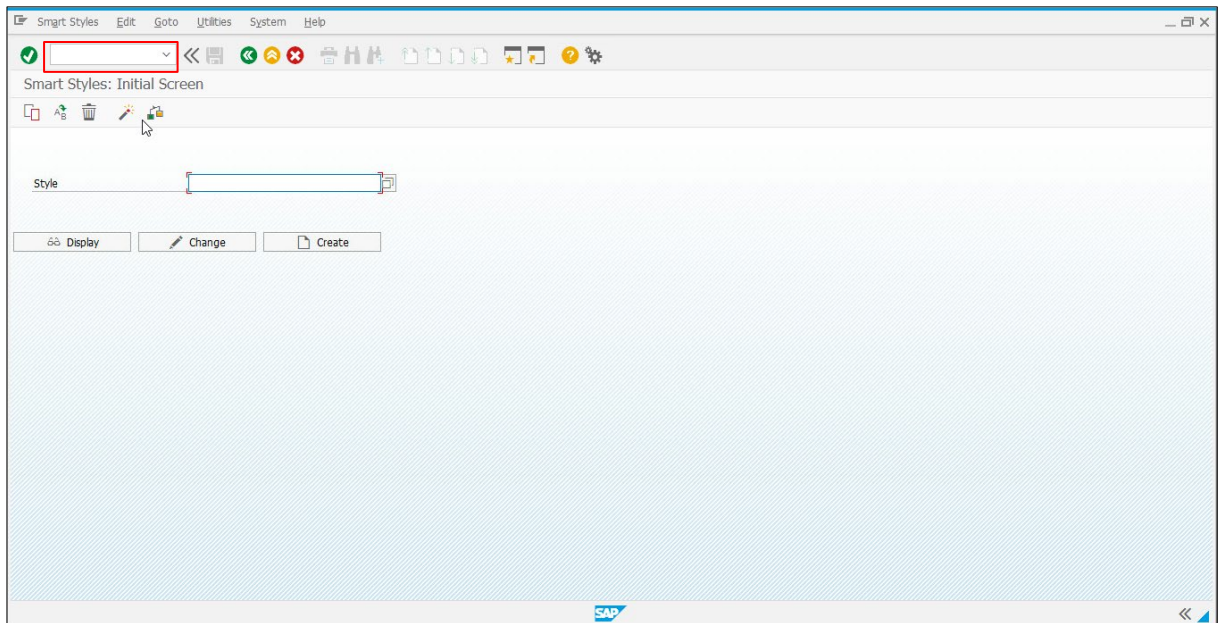


- Confirm the new Bar Code Type “ZBR39” is listed.

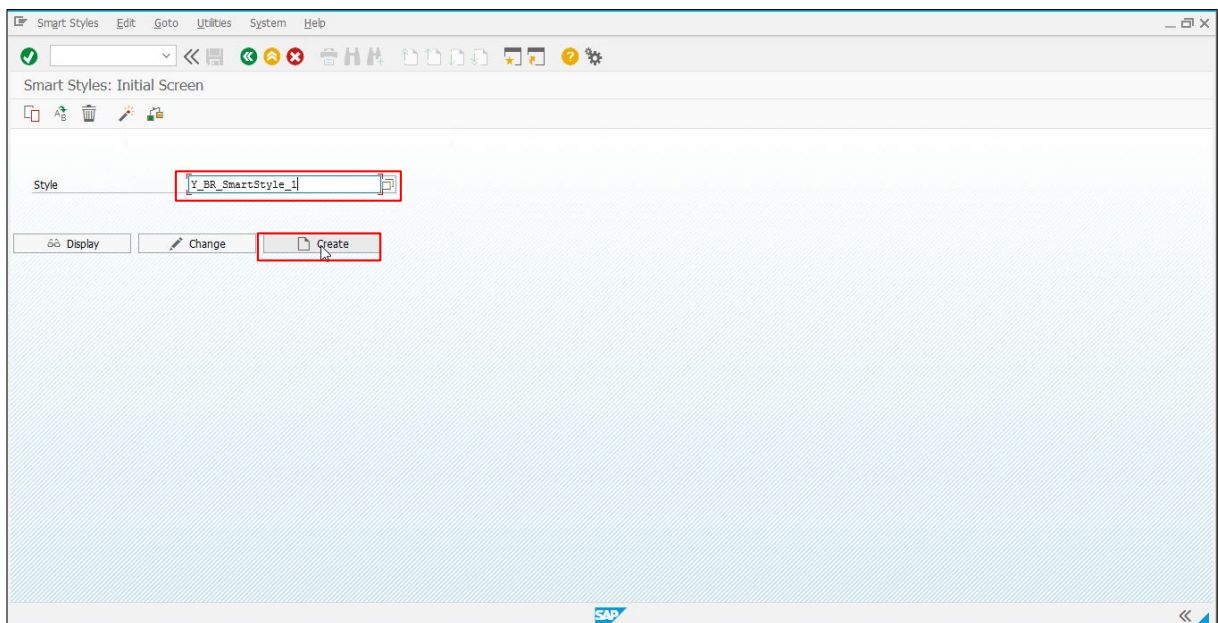


5.2 Create a Smart Style

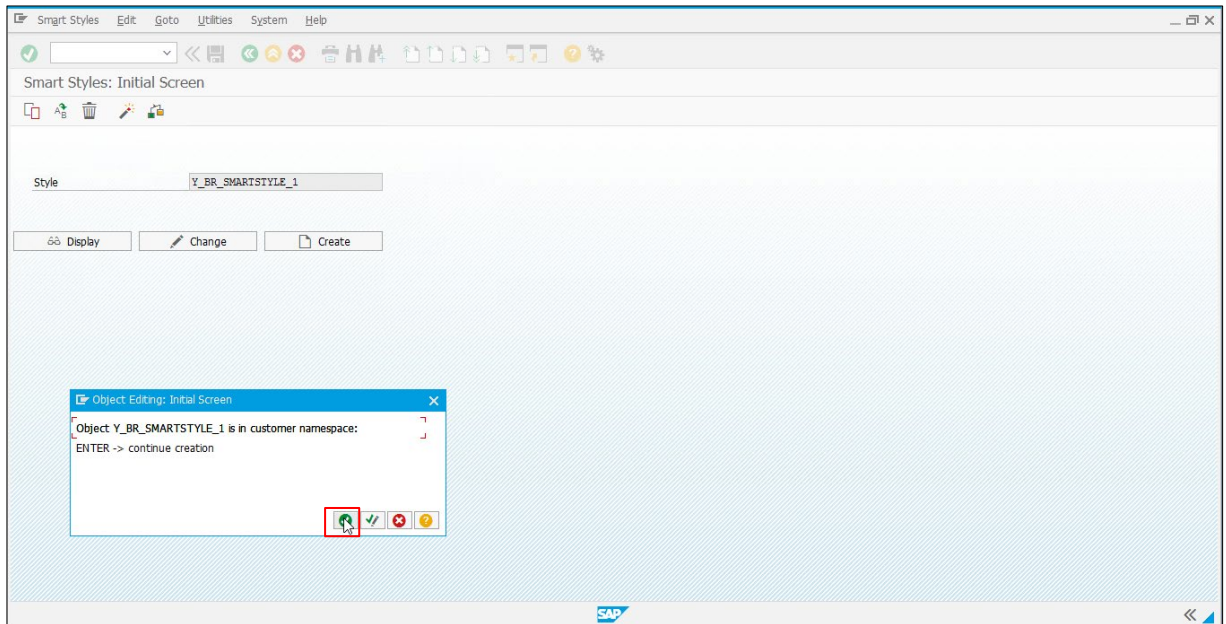
1. Search for the **Smart Style** you want to retrieve.



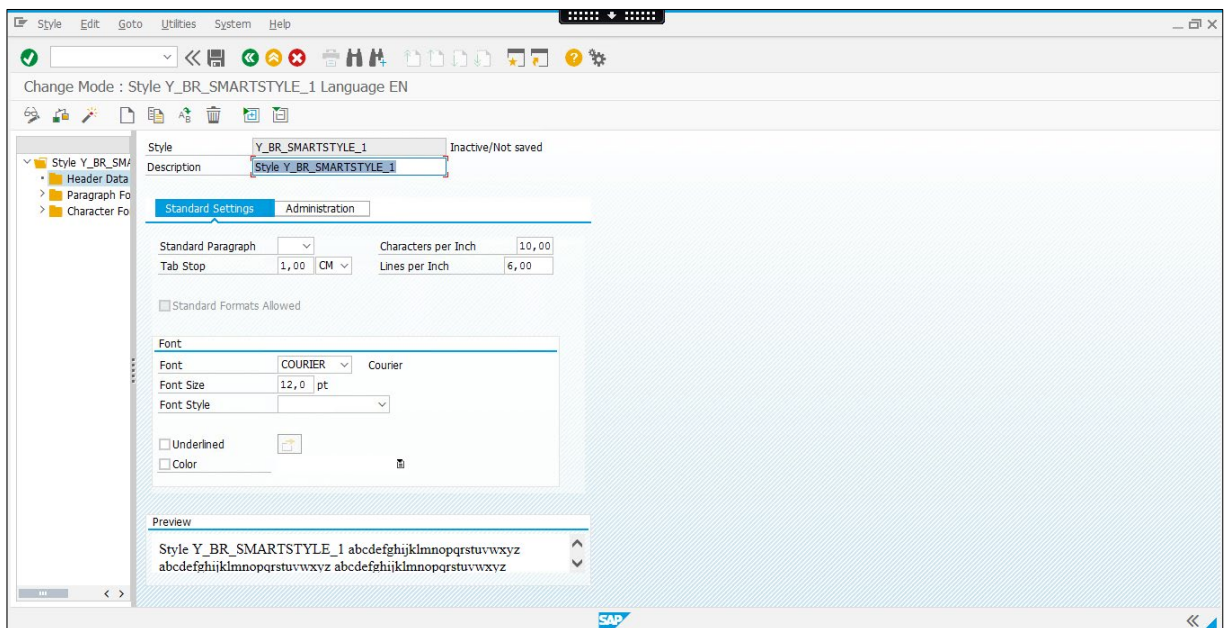
2. Type the Smart Style Name preceded by a "Y" prefix, and then click the **Create** button.



3. Click the **Continue** (🔄) button to open the Smart Styles Editor to generate a new Smart Style.

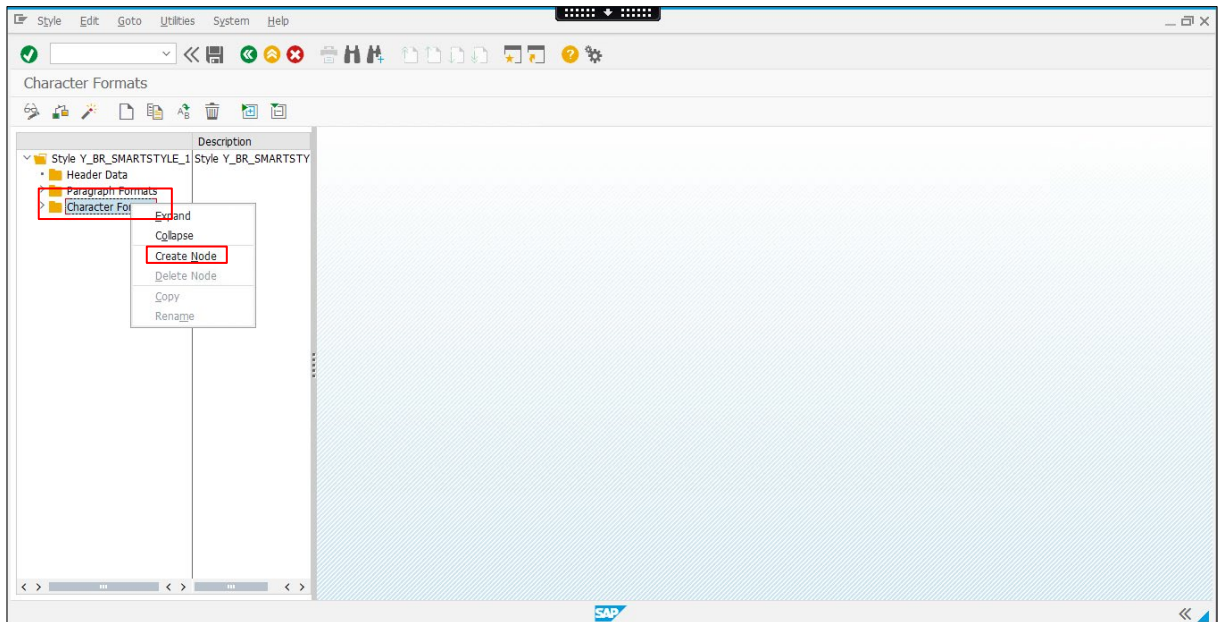


4. Modify the settings, as necessary.

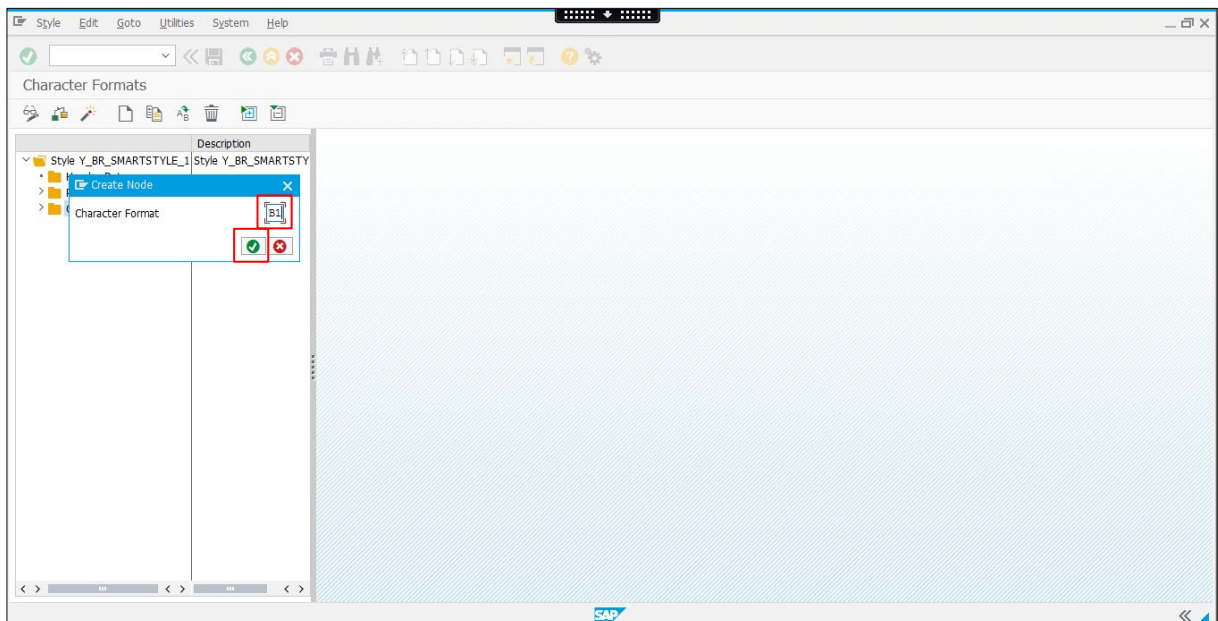


5.3 Define Barcodes

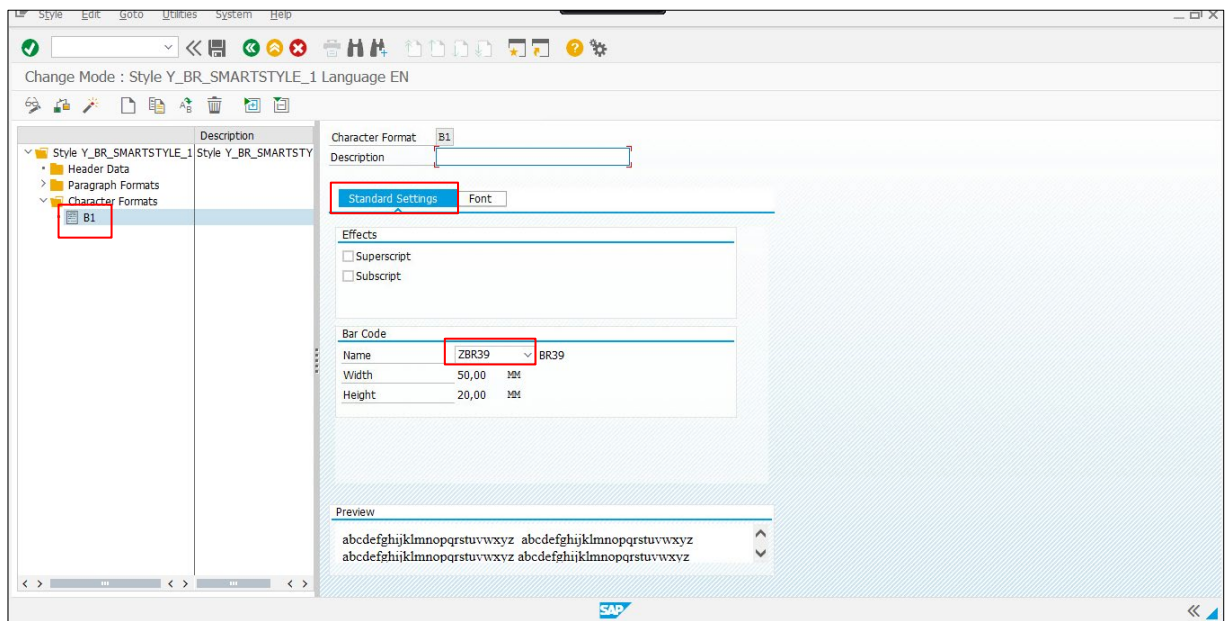
1. To add a barcode into the Smart Style: right-click the **Characters Formats** folder and select **Create Node**.



2. Type the character format in **Character Format**, and click the **Enter** (✓) button.

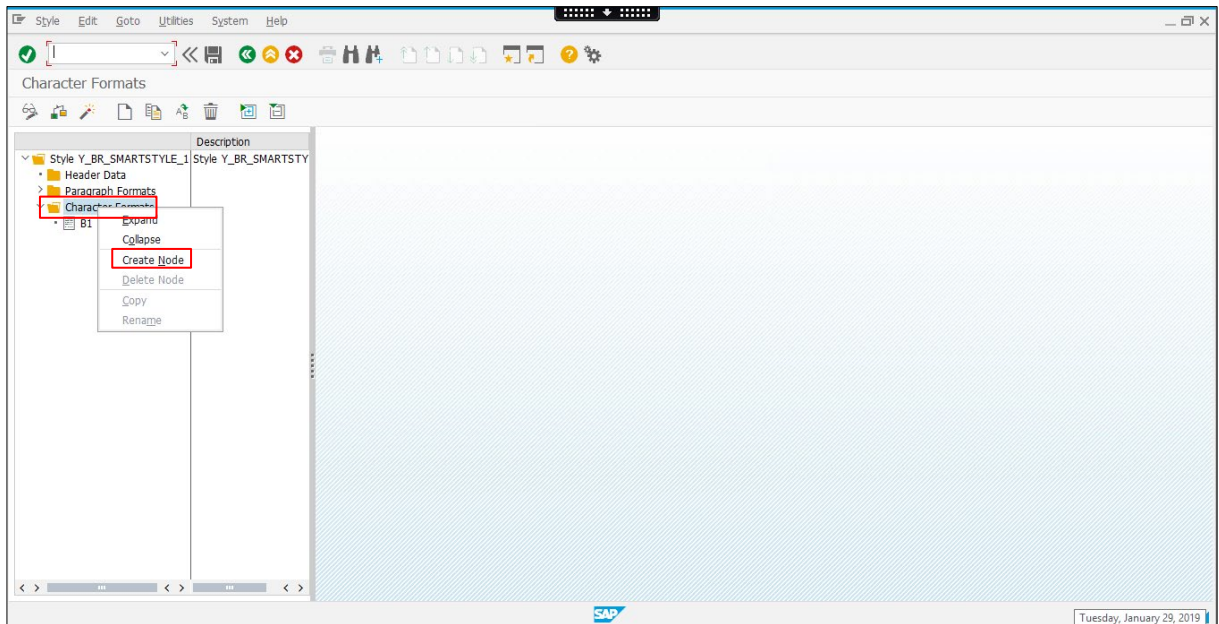


3. Go to the **Standard Settings** tab and select the previously entered Bar Code Type.

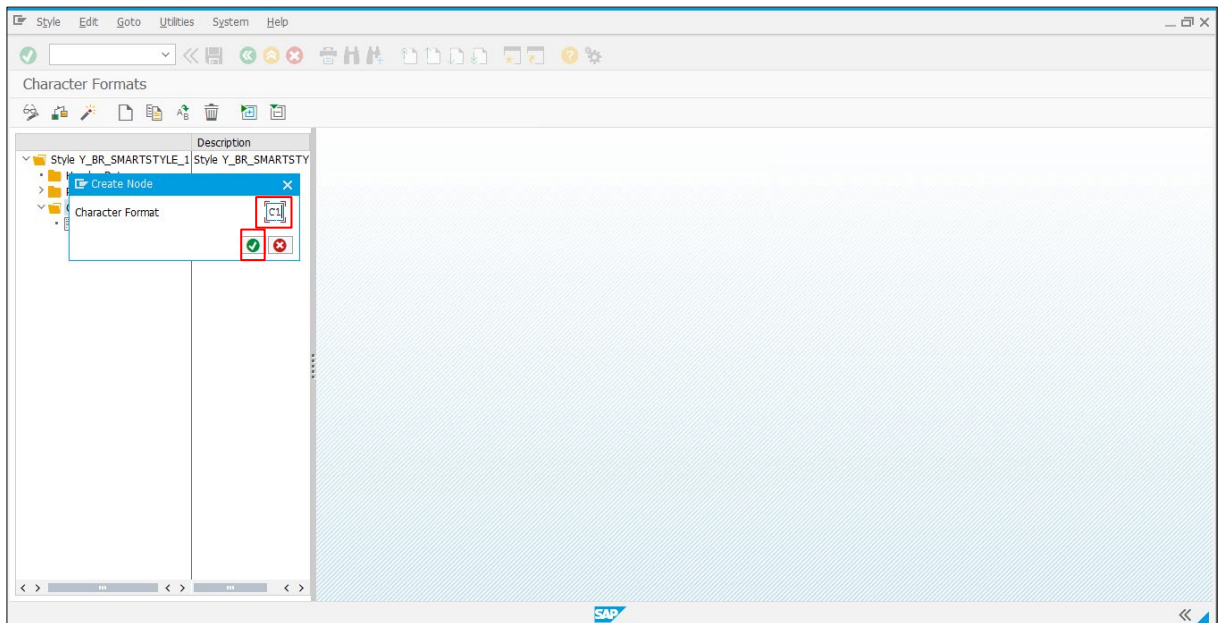


5.4 Define Font

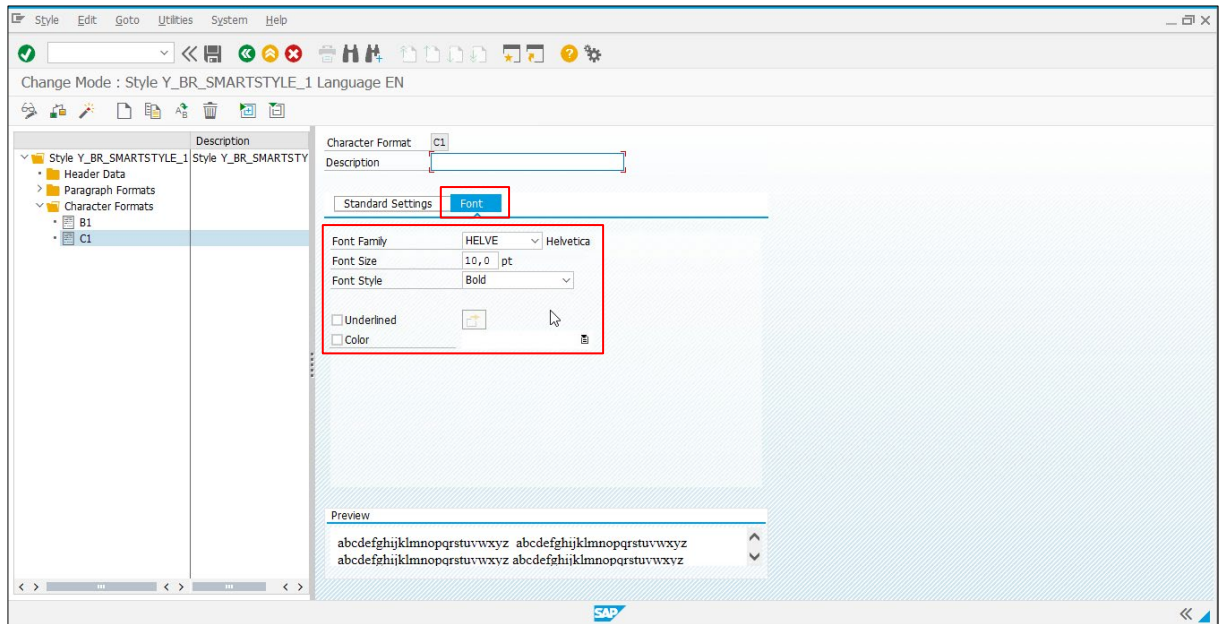
1. To add text to the Smart Style: right-click the **Characters Formats** folder and select **Create Node**.



2. From the Create Node window, enter the **Character Format**, and click the **Enter** (↵) button.

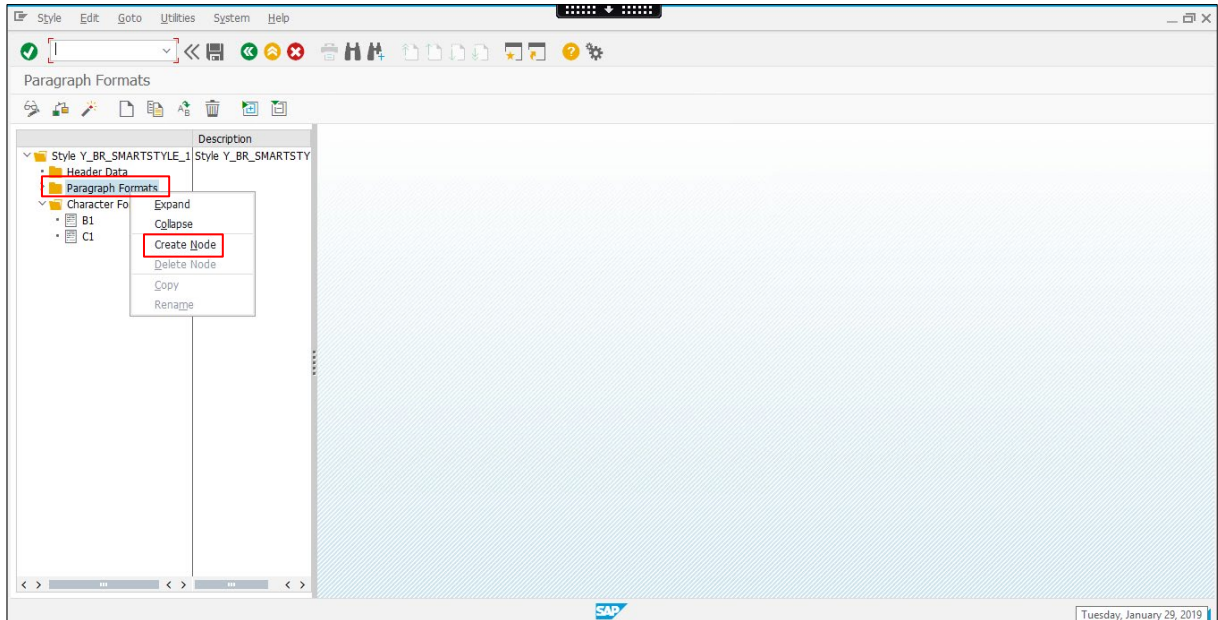


3. Go to the **Font** tab to enter a description (for example: Helvetica font), select the font you want (for example: HELVE) and specify its parameters.

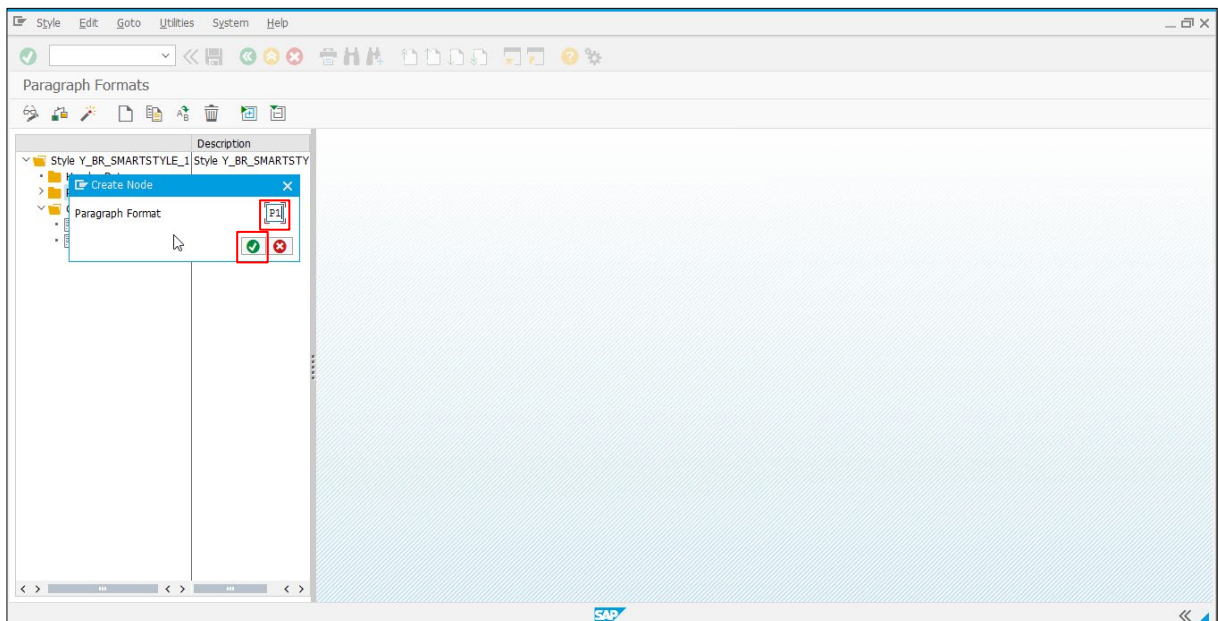


5.5 Define Paragraphs

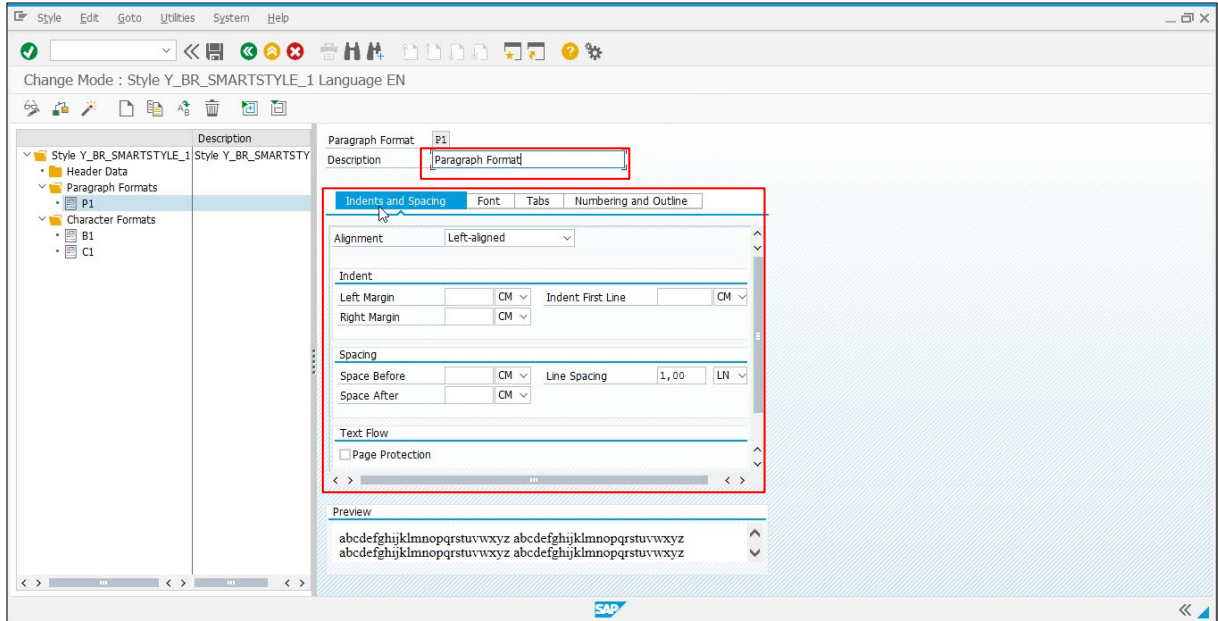
1. Add a default Paragraph to the Smart Style: right-click the **Paragraph Formats** folder and select **Create Node**.



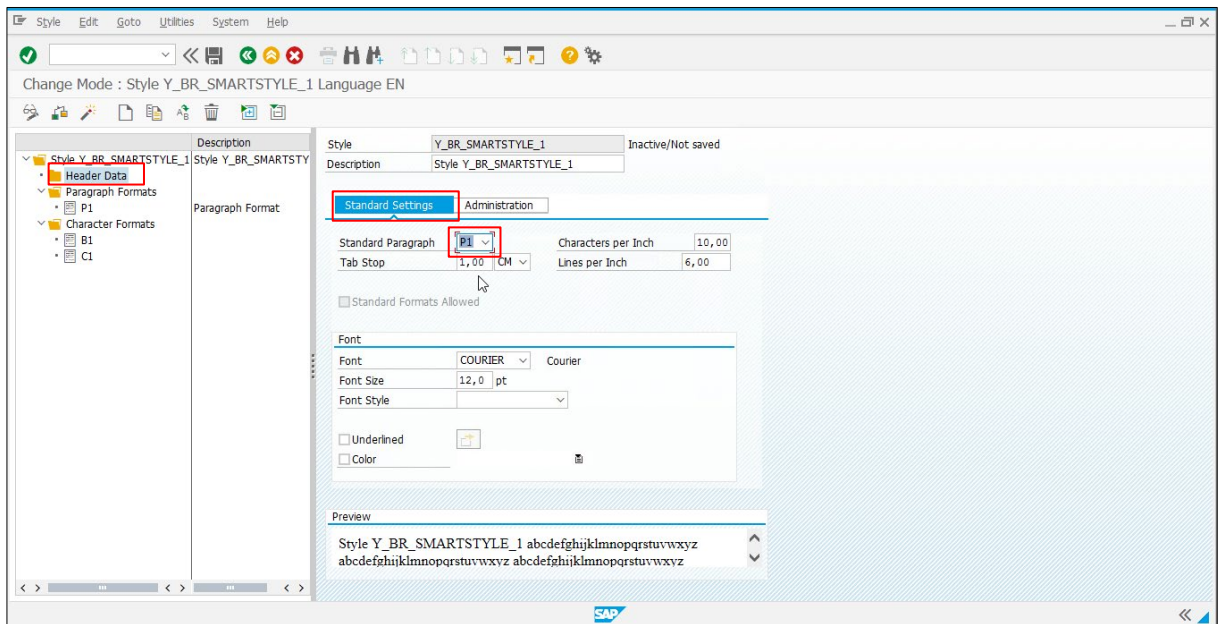
2. Specify the **Paragraph Format** (for example: P1), and click the **Enter** (✓) button.



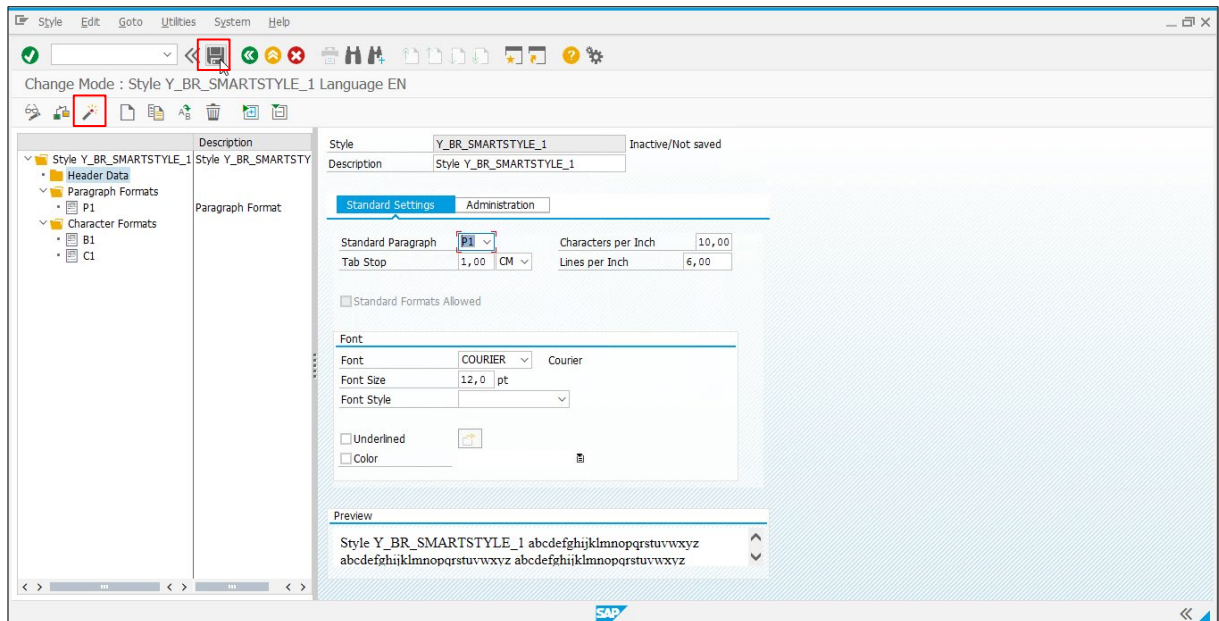
3. Enter a **Description** (for example: Paragraph Format), and specify the paragraph format settings.



4. Go to the **Header Data** folder, and select the “Standard Paragraph” setting from the drop-down menu.

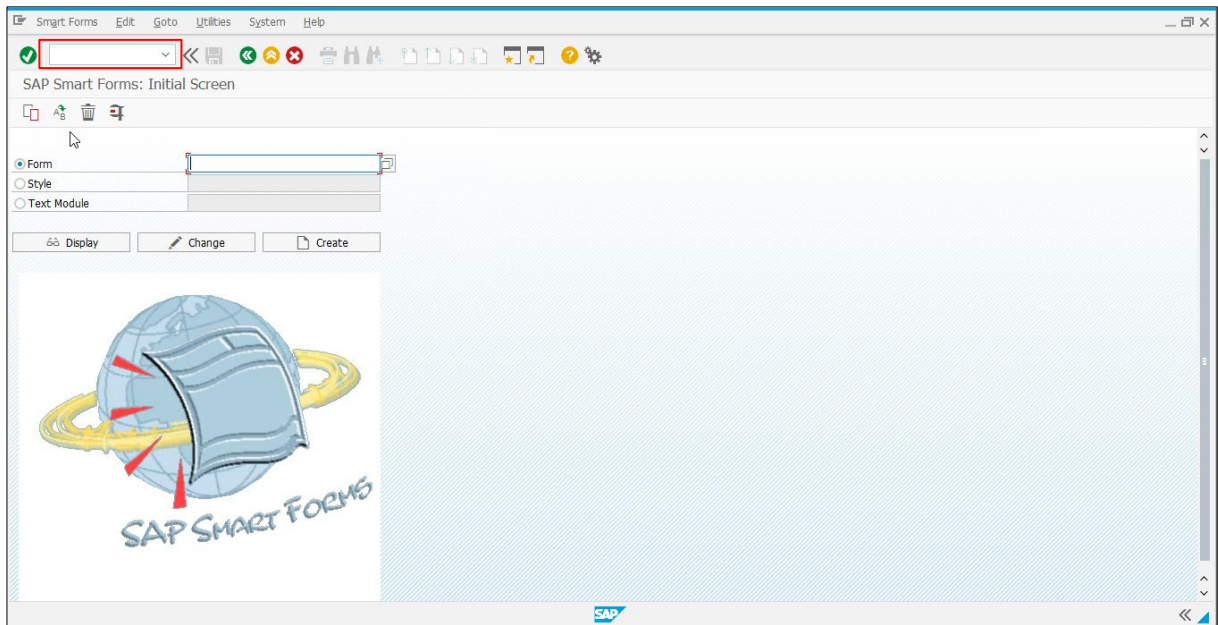


5. Click the **Save** (💾) button to save the Smart Style, and then click the **Activate** (🔧) button.

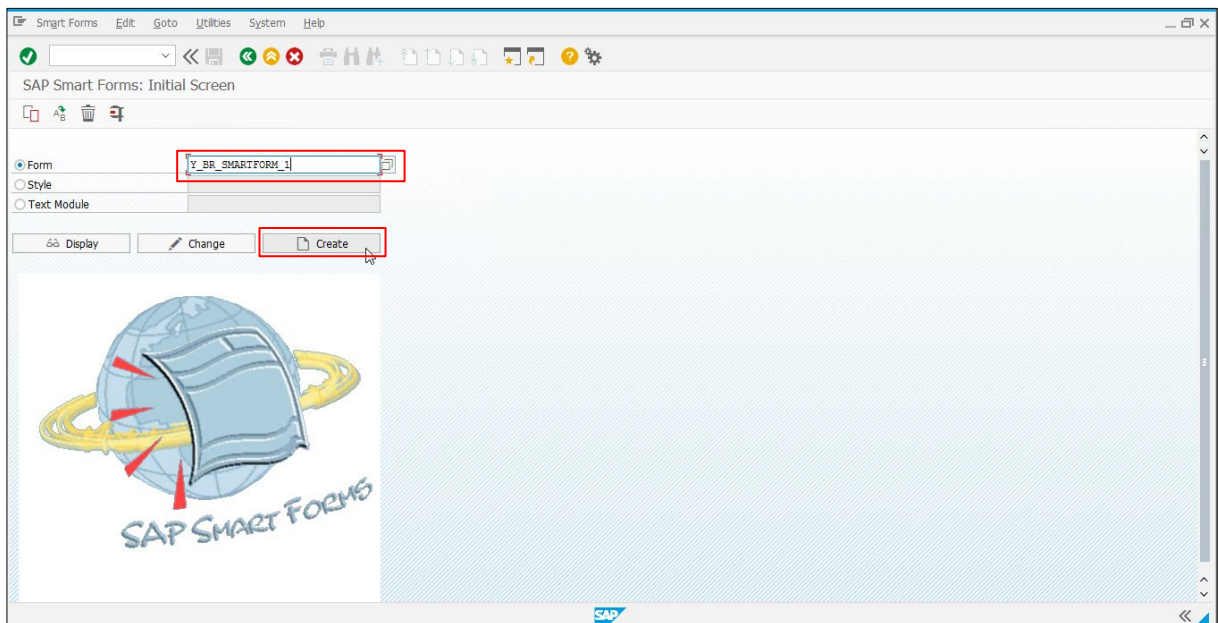


5.6 Create a Test Smart Form

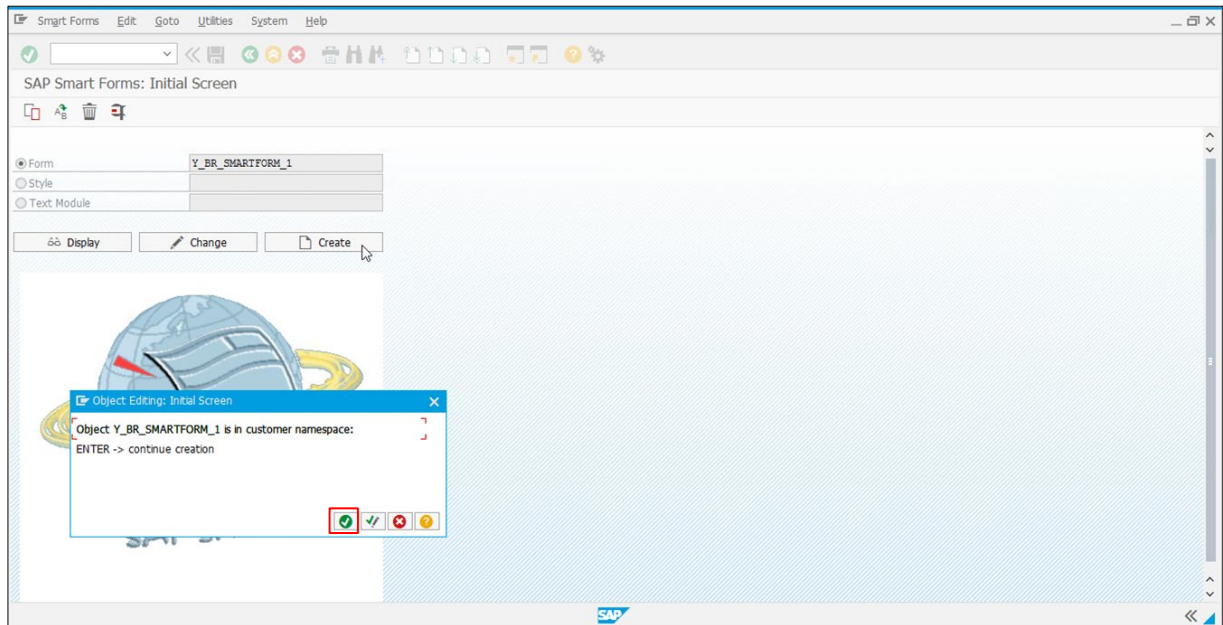
1. Search for the **Smart Style** you want to retrieve.



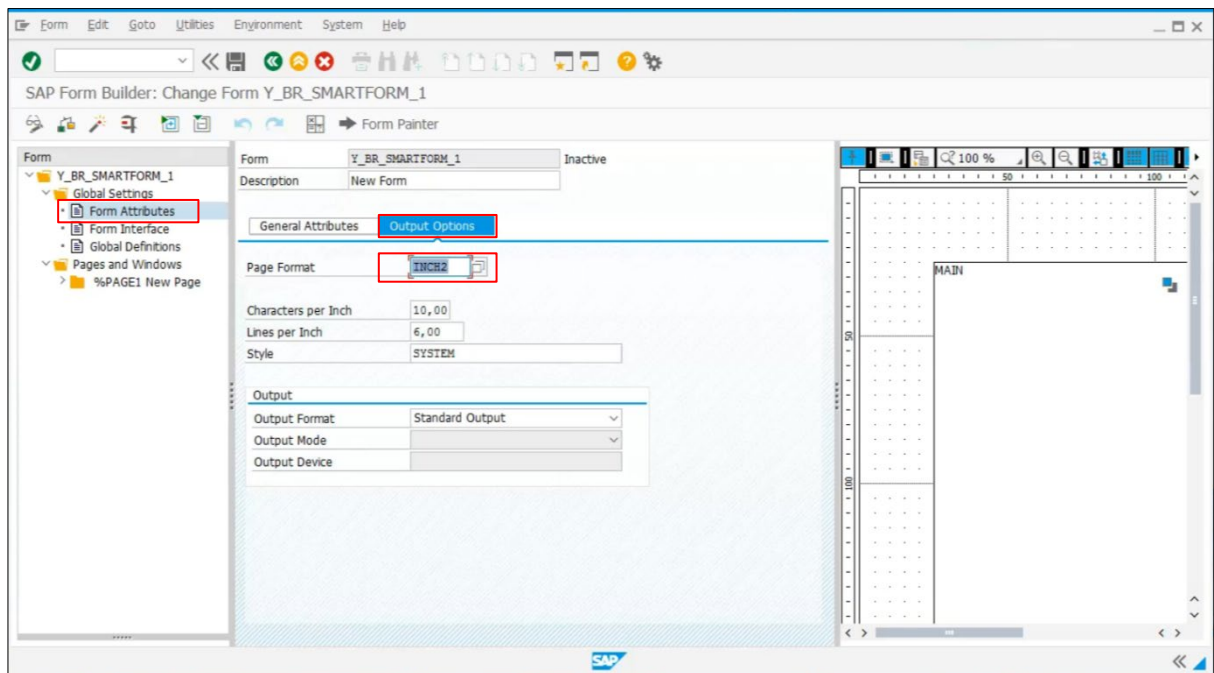
2. Type the **Smart Form** name, which has to start with “Y”, and then click the **Create** button.



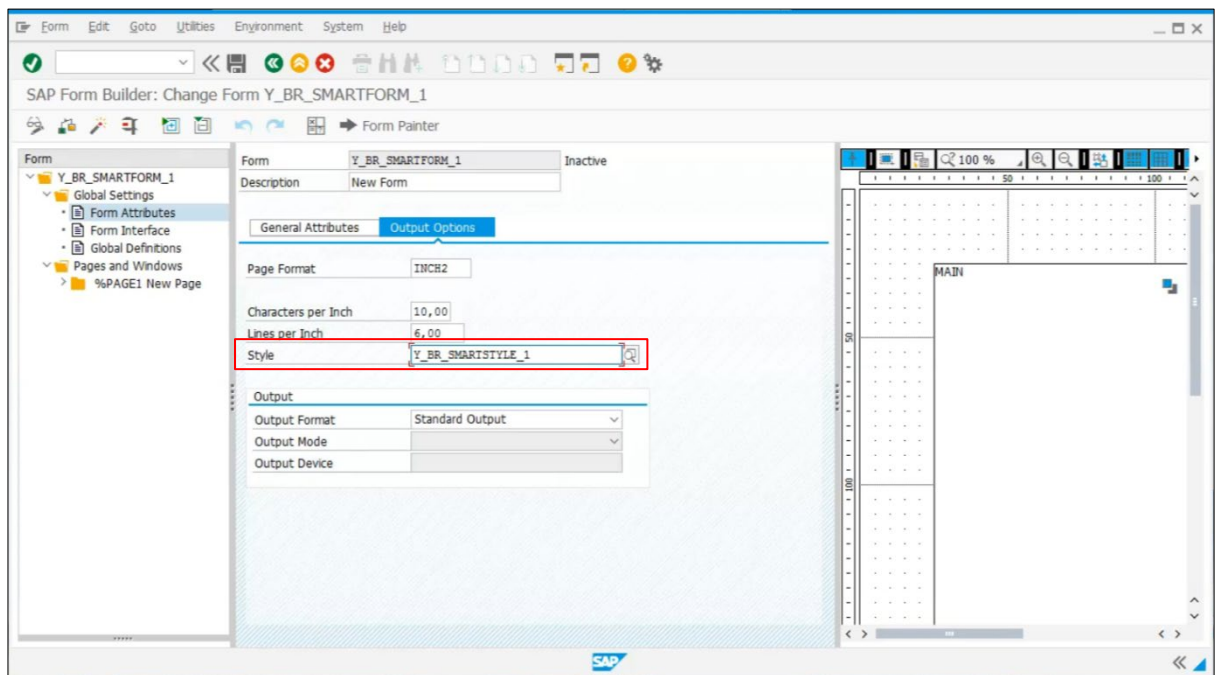
3. Click the **Continue** (✔) button to open the Smart Form Editor.



4. Click **Form Attributes** and go to the **Output Options** tab. You need to set the media settings of the main printer in advance.

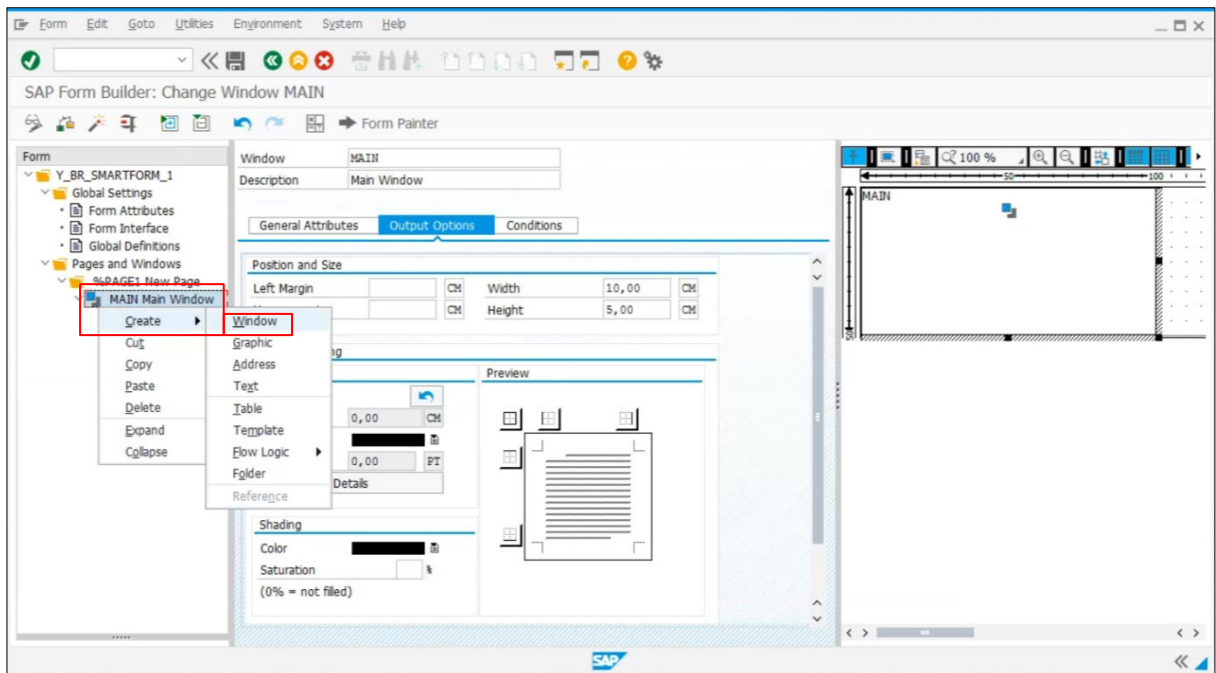


5. Specify the Smart Style. (For example: Y_BR_SMARSTYLE_1, in **Style**).

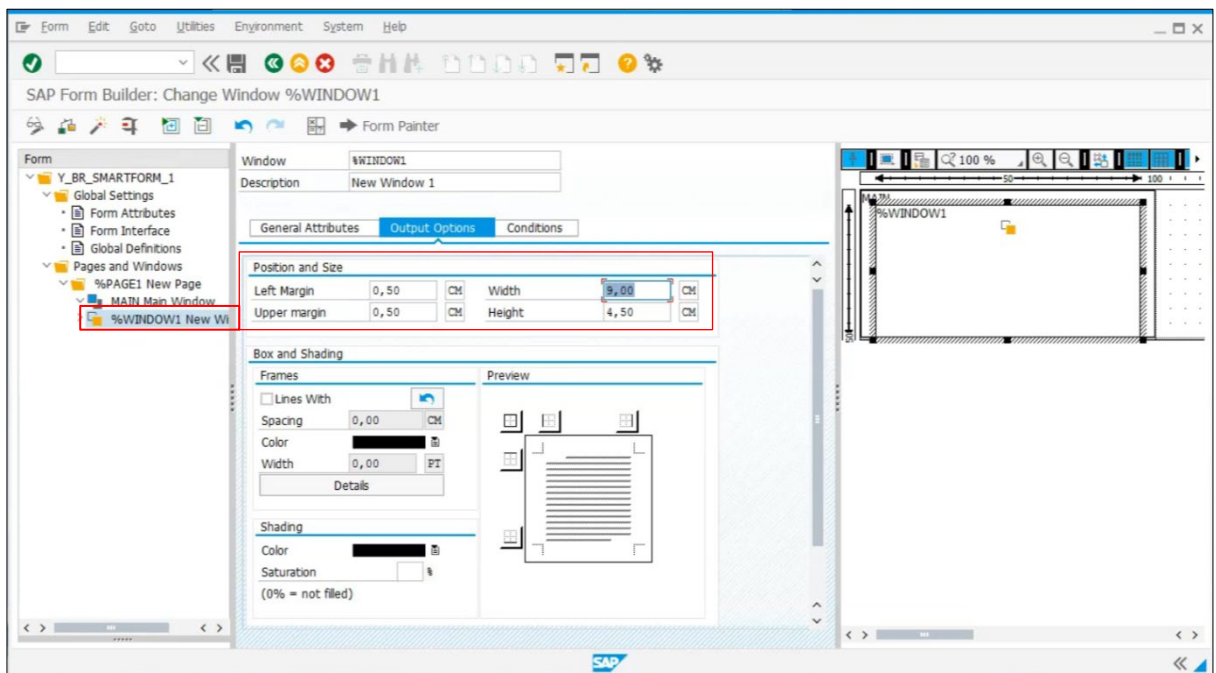


5.7 Add a Window

1. Right-click the **MAIN Main Window** folder, and then select **Create > Window**.

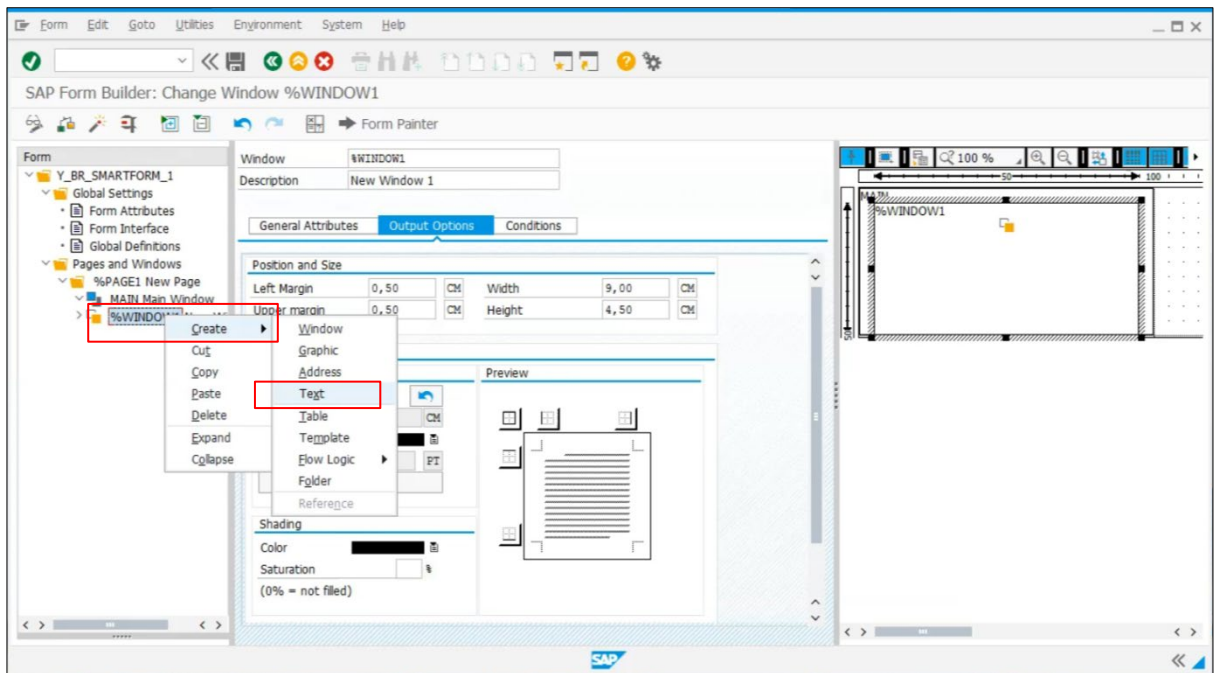


2. Go to the **Output Options** tab, and then specify the label Position and Size settings.

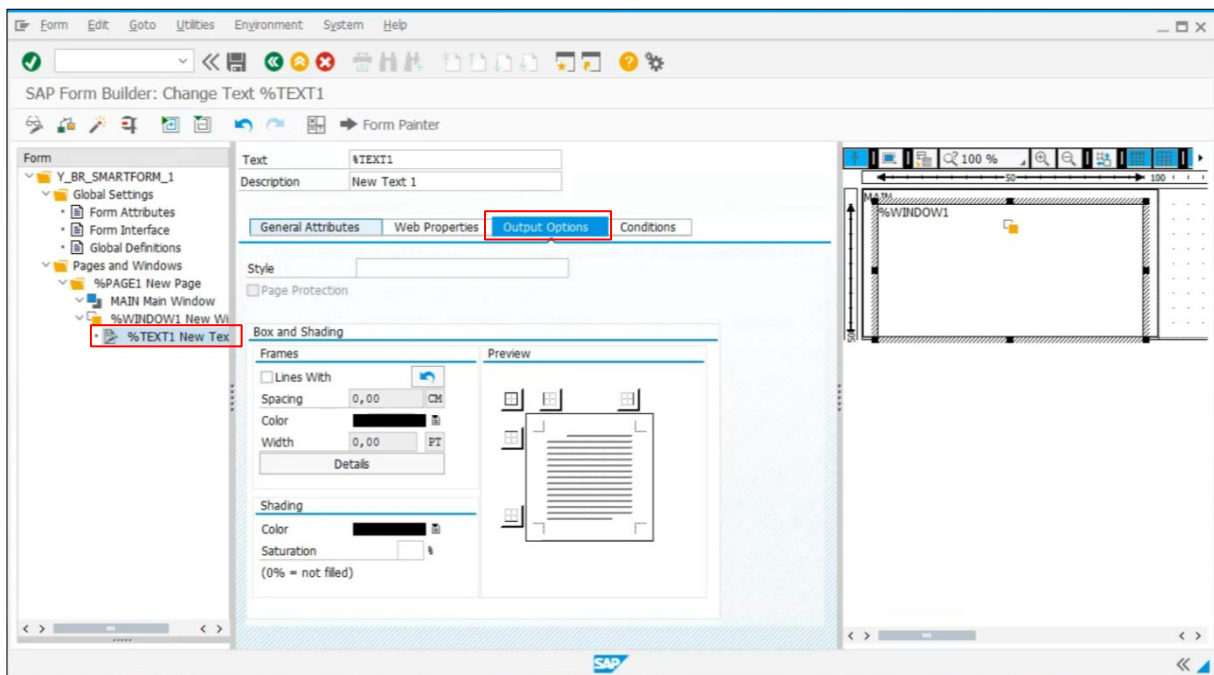


5.8 Add Text to a Window

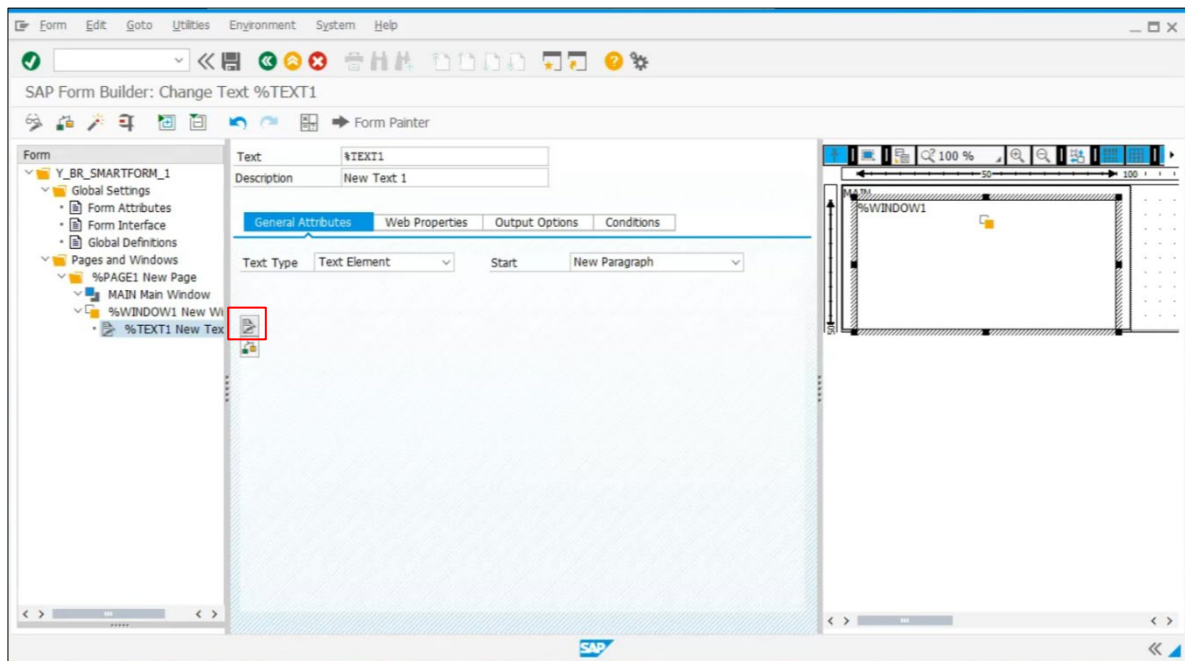
1. Right-click the **%WINDOW1 New Window 1** folder, and then select **Create > Text**.



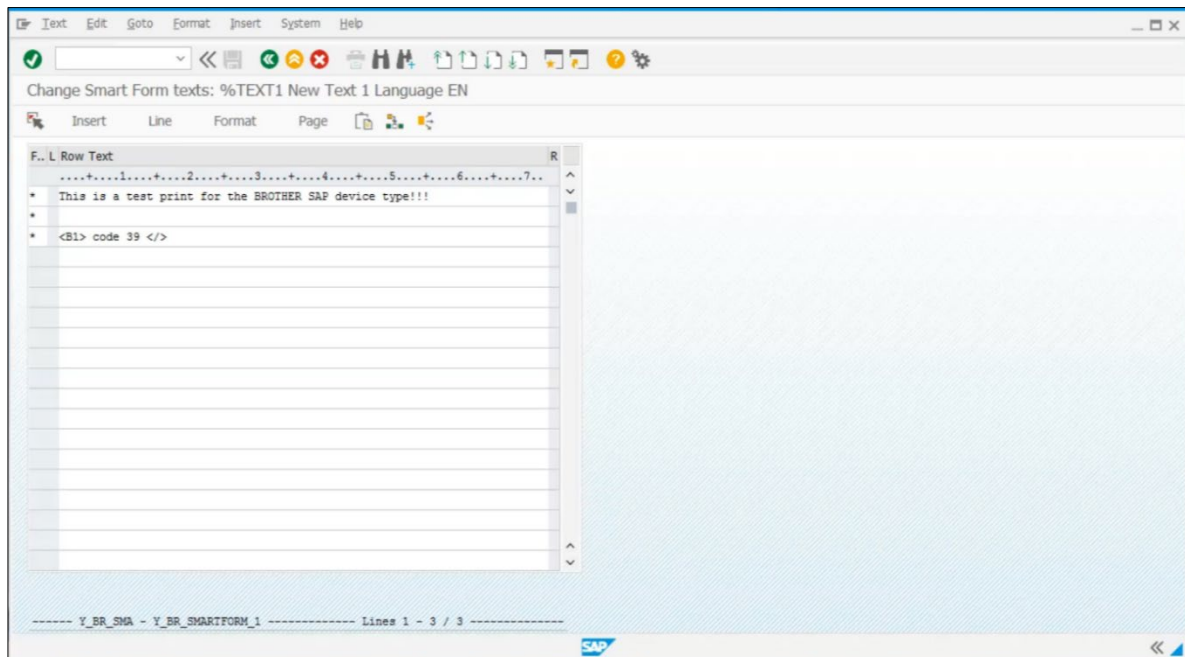
2. Go to the **Output Options** tab to type the Smart Style name you want.



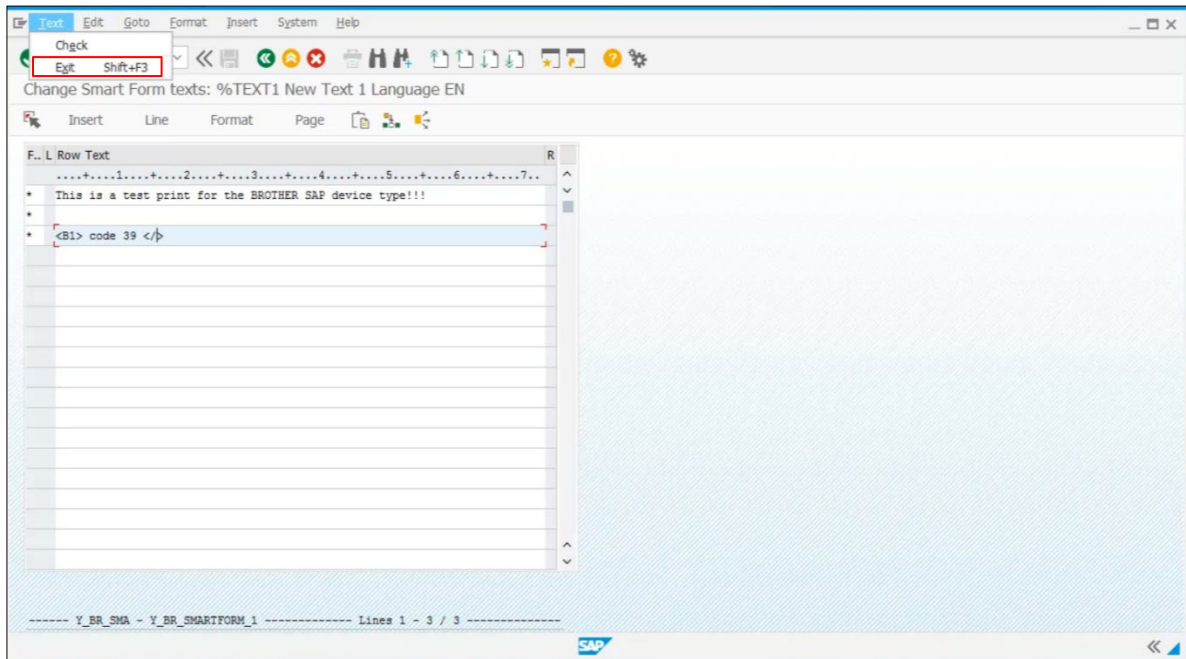
3. Go to the **General Attributes** tab and click the **Editor** (📄) button.



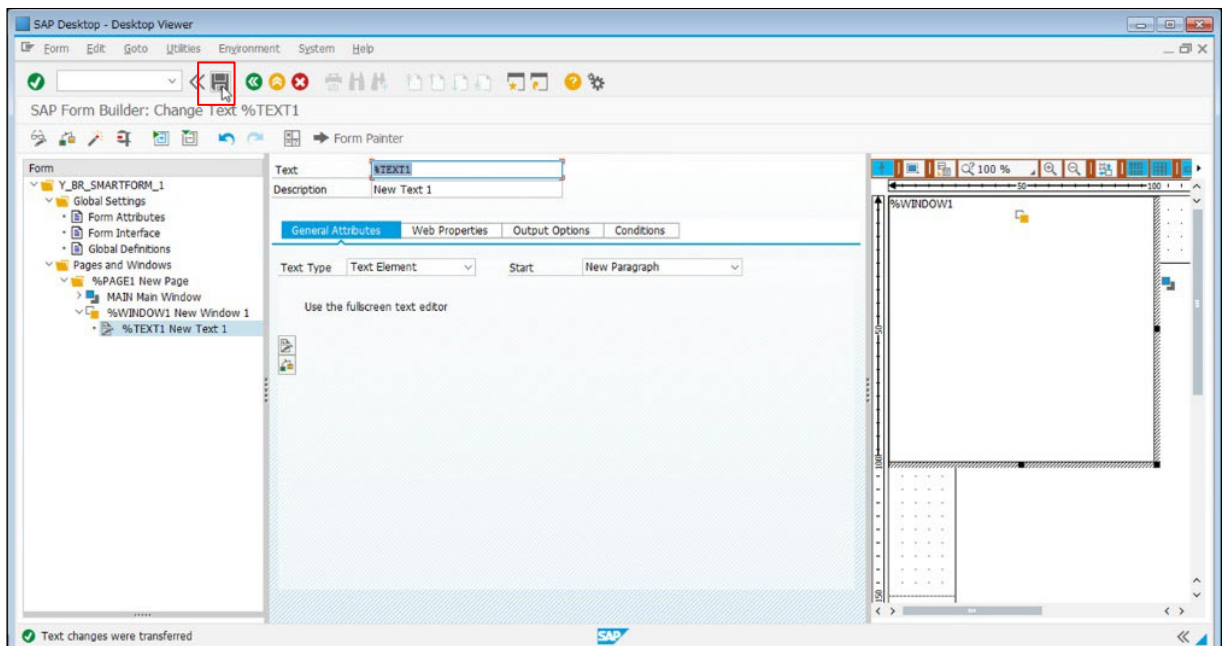
4. The **Smart Form Editor** opens. Enter the label text you want.



5. Go to **Text > Exit** to exit the **Smart Form Editor**.

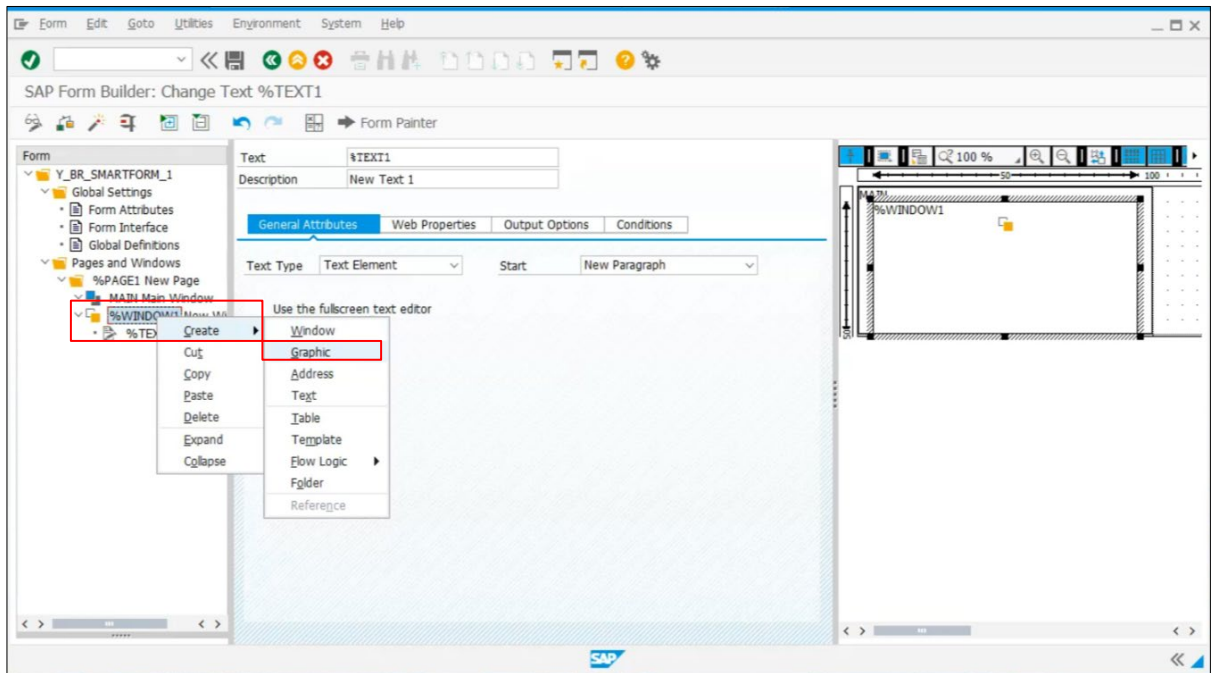


6. Click the **Save** () button to save the Smart Form.

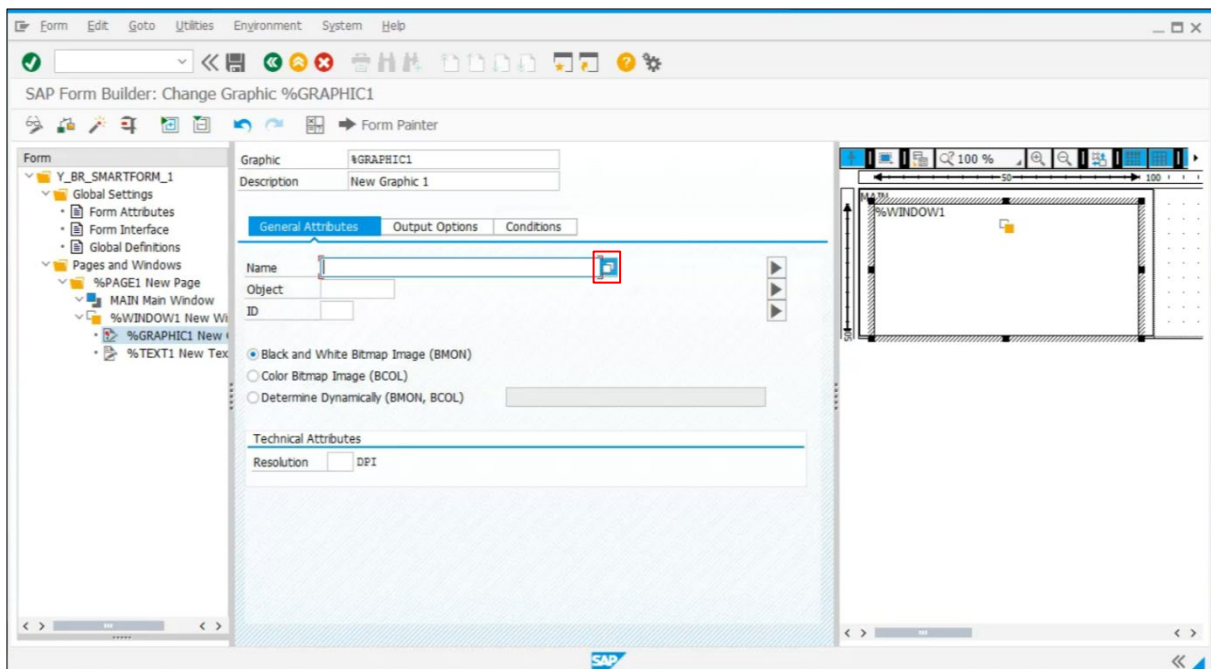


5.9 Add a Graphic into the Window

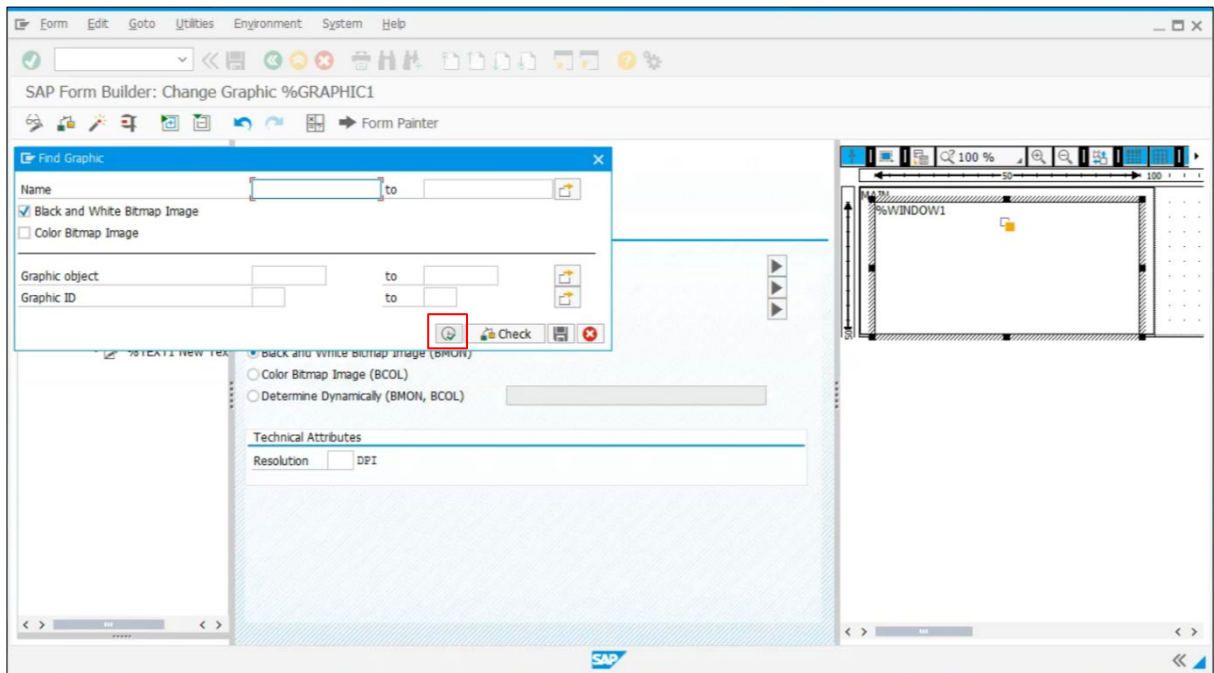
1. Right-click the **%WINDOW1 New Window 1** folder, and then select **Create > Graphic** to add a new Graphic window.



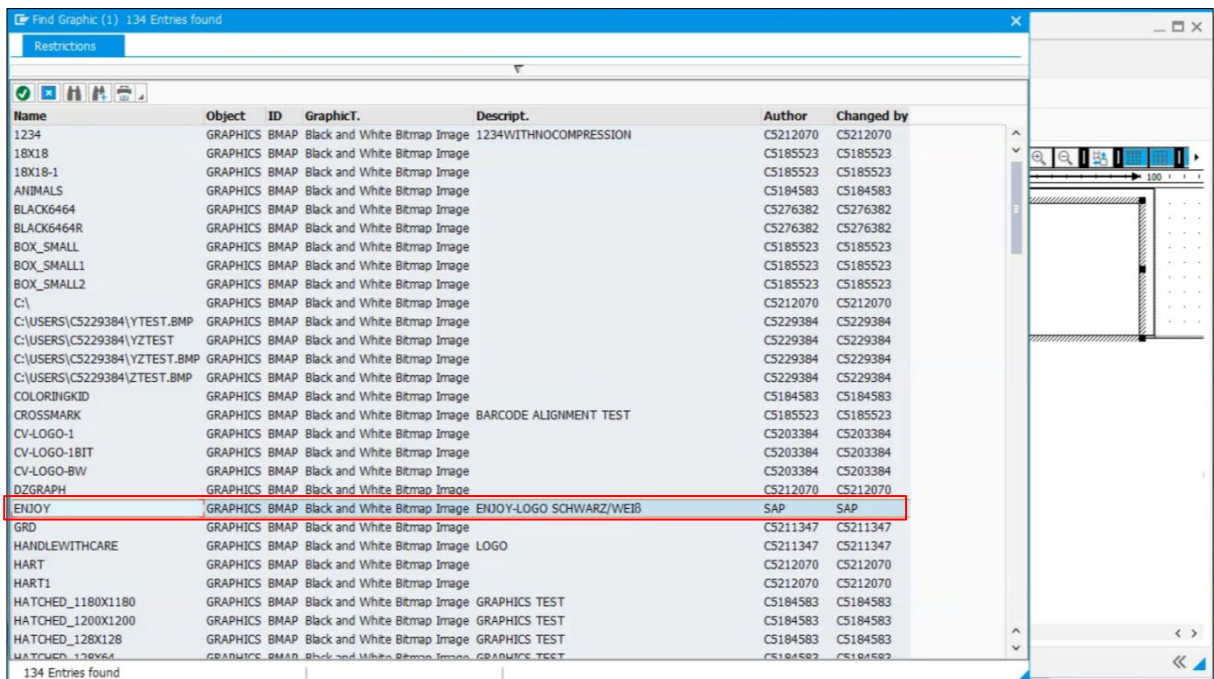
2. Go to the **General Attributions** tab, and then click the **Find** (🔍) button.



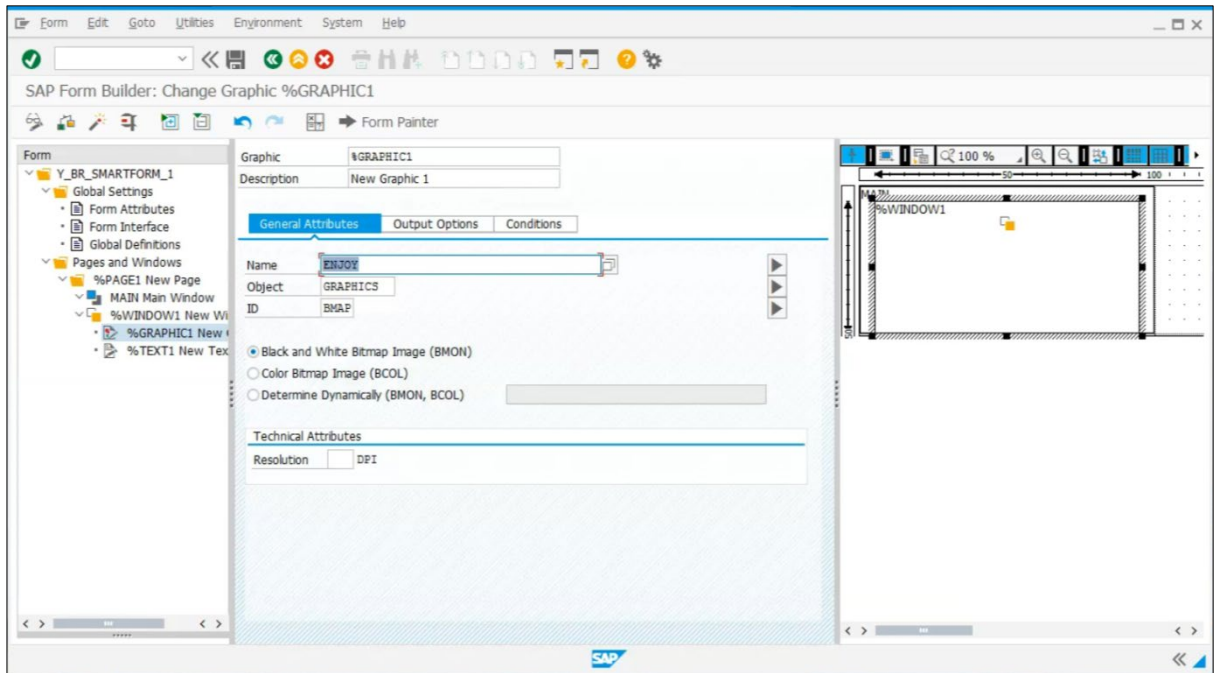
- Click the **Execute** (🔍) button to display the search results.



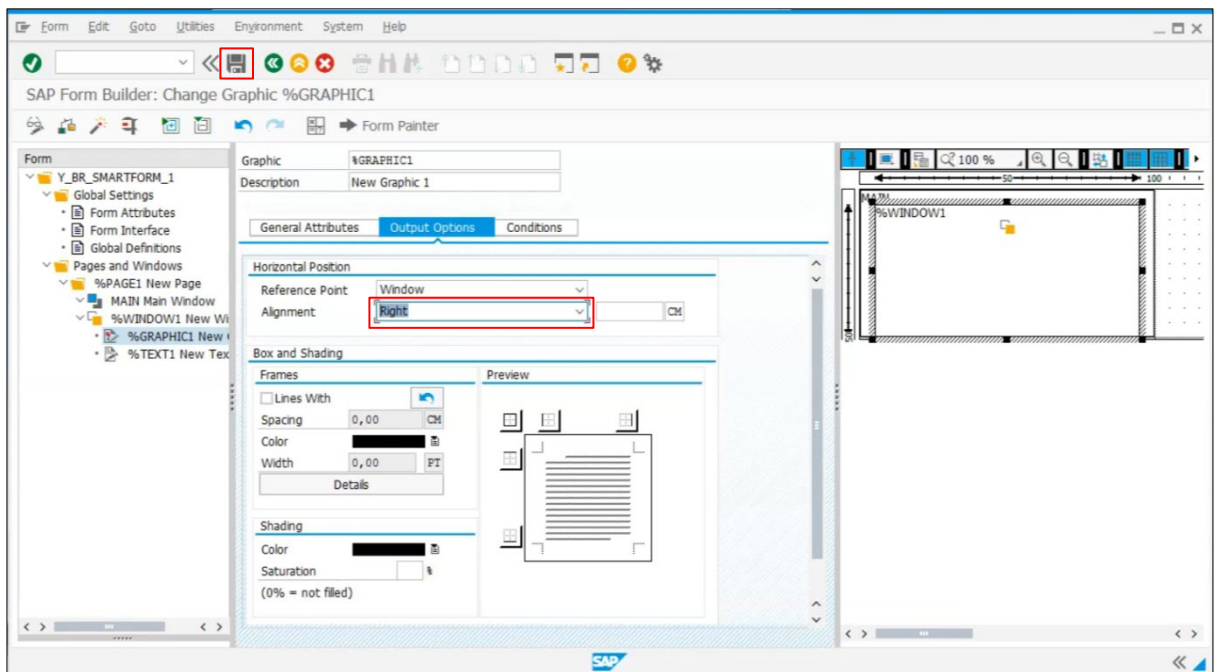
- Double-click the graphic you want.



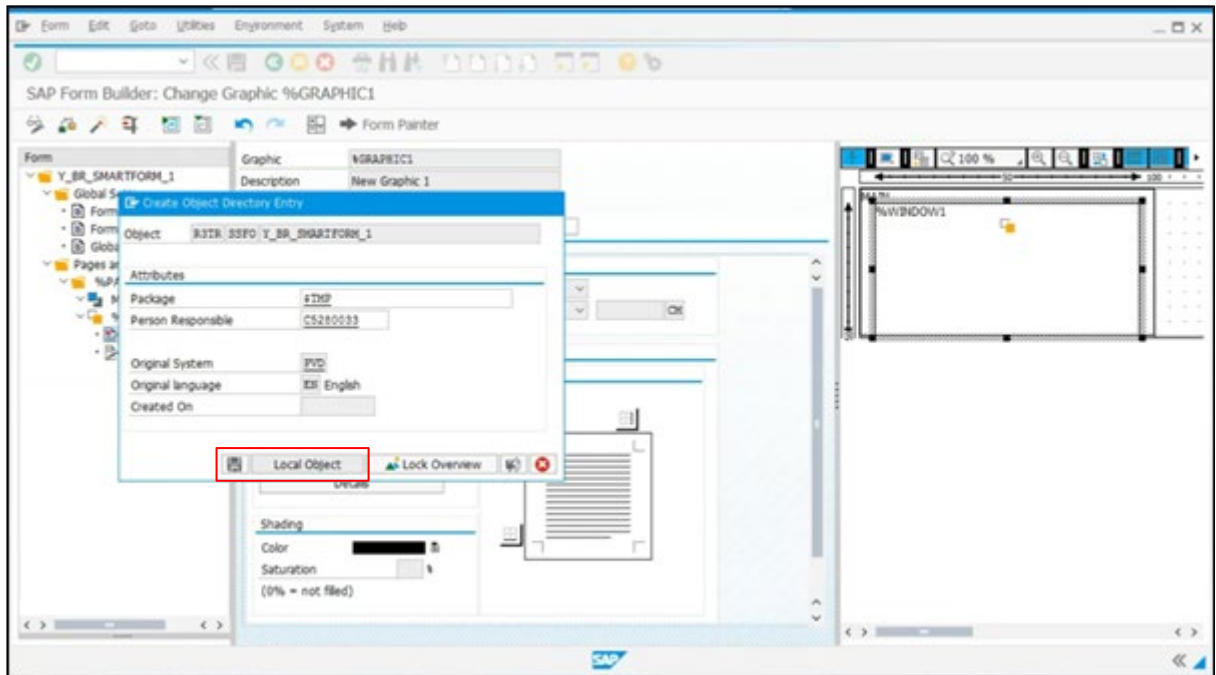
5. Specify the graphic settings in the same way as you specify text settings. For more information, see [5.8 Add Text to a Window](#).



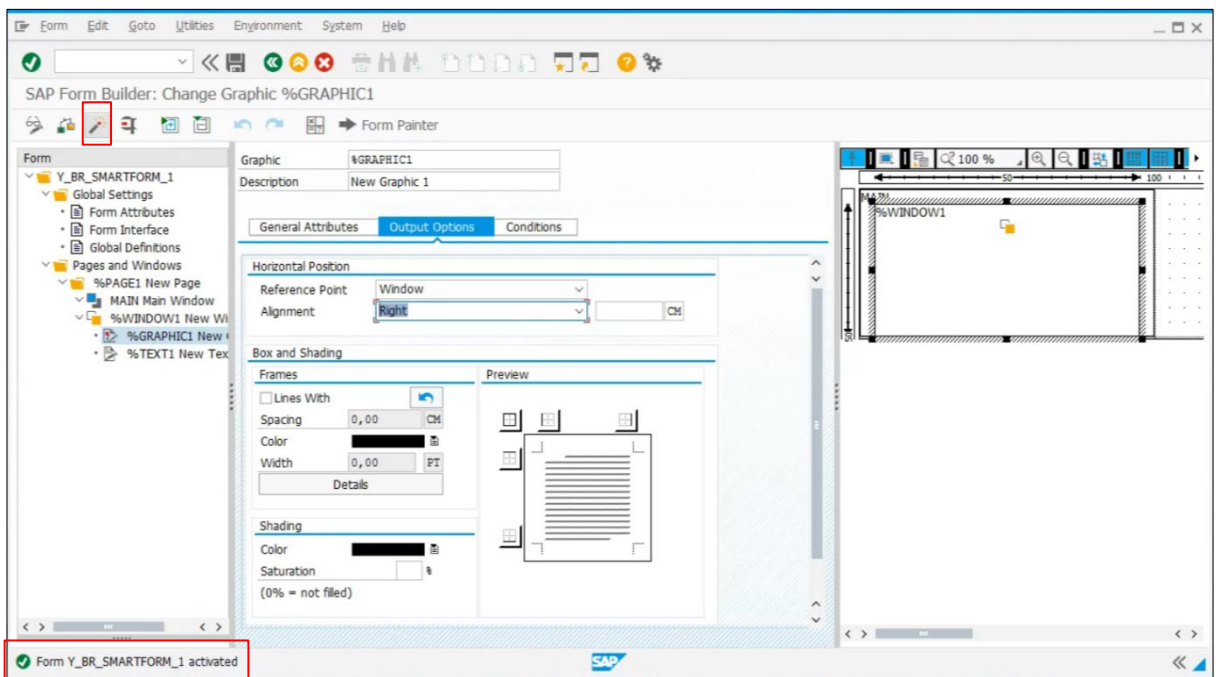
6. Go to the **Output Options** tab to select the **Alignment** you want. Click the **Save** (📁) button.



7. The Create Object Directory Entry dialog box appears. Click the **Local Object** button to save.

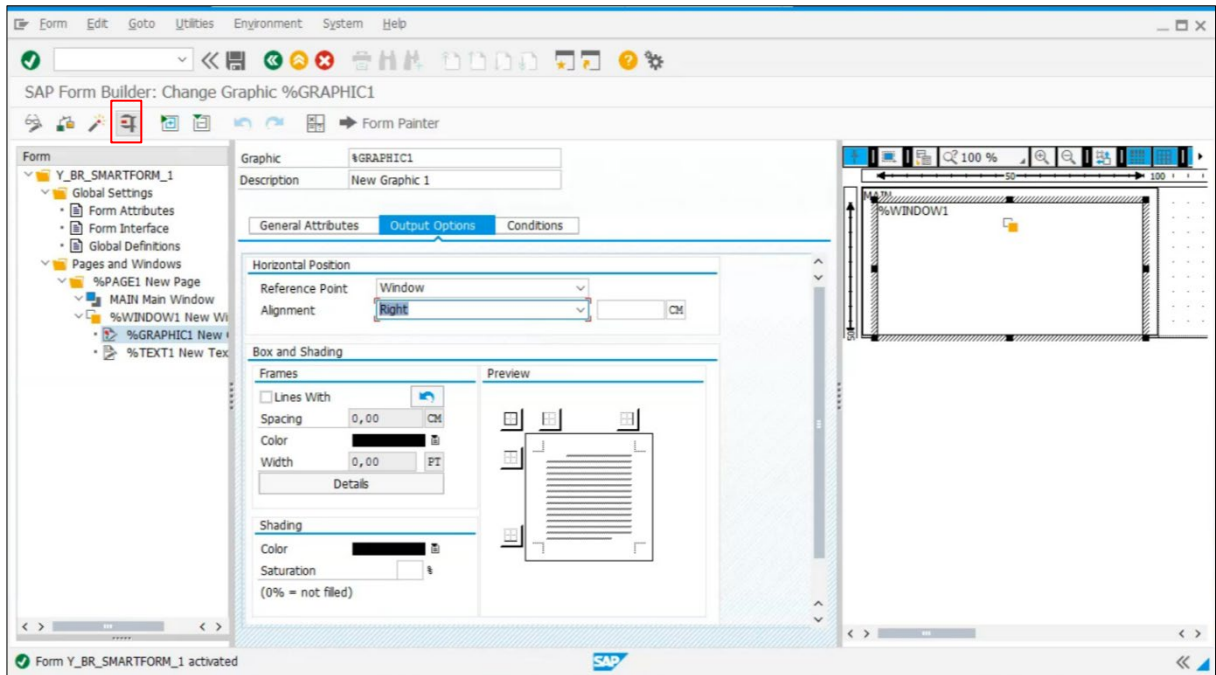


8. Click the **Activate** (🔧) button to activate the Smart Form.

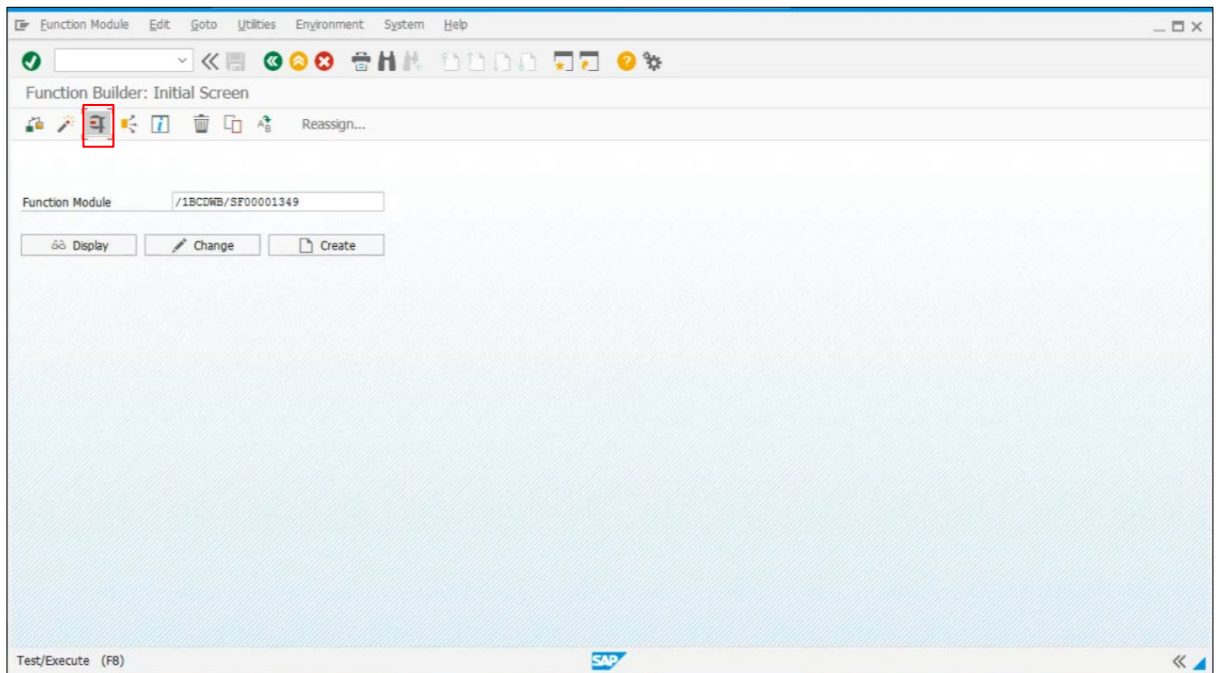


5.10 Performing the Test

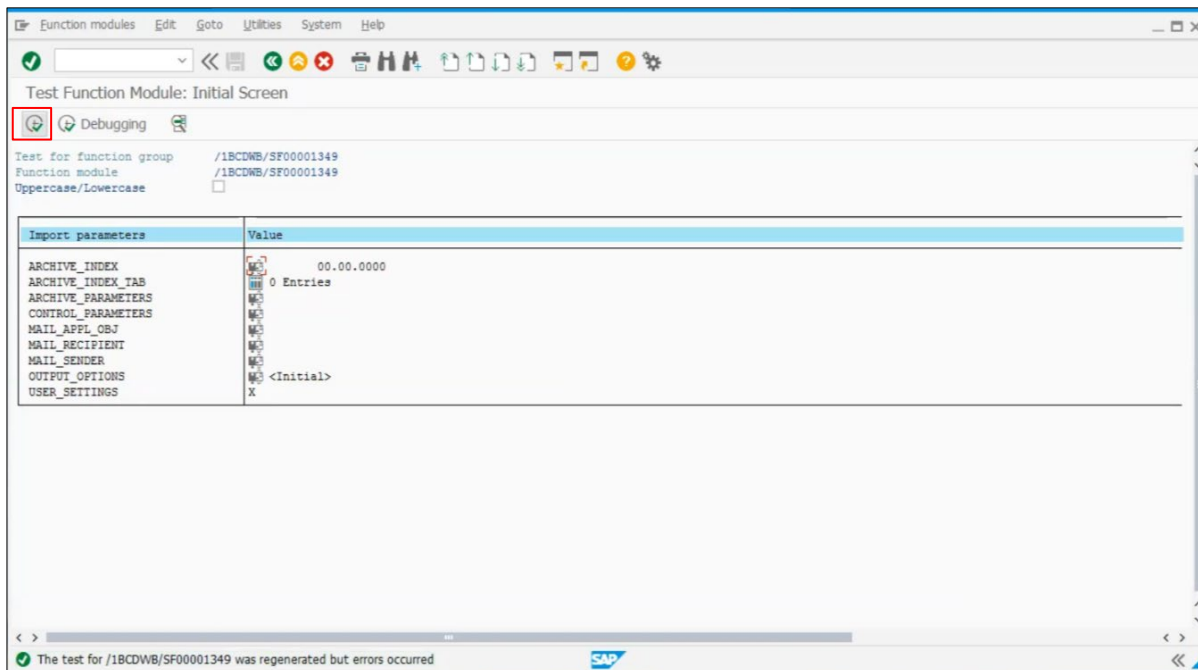
1. Click the **Test** () button.



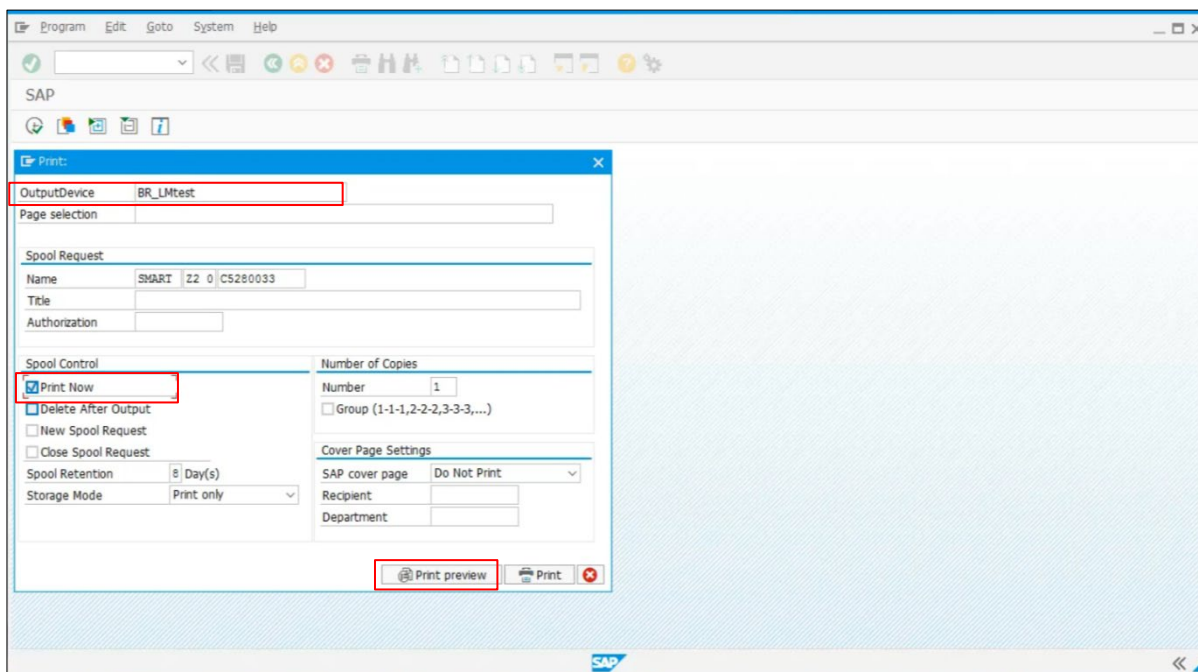
2. Click the **Test** () button, again.

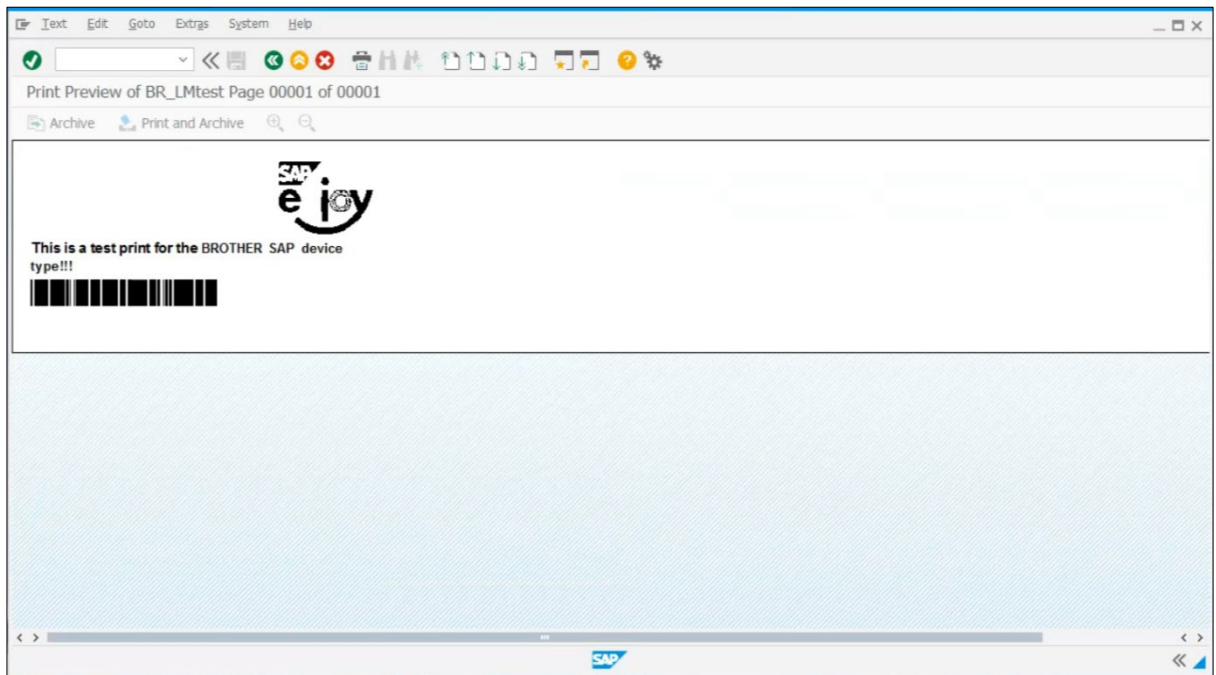


3. Click the **Execute** () button.

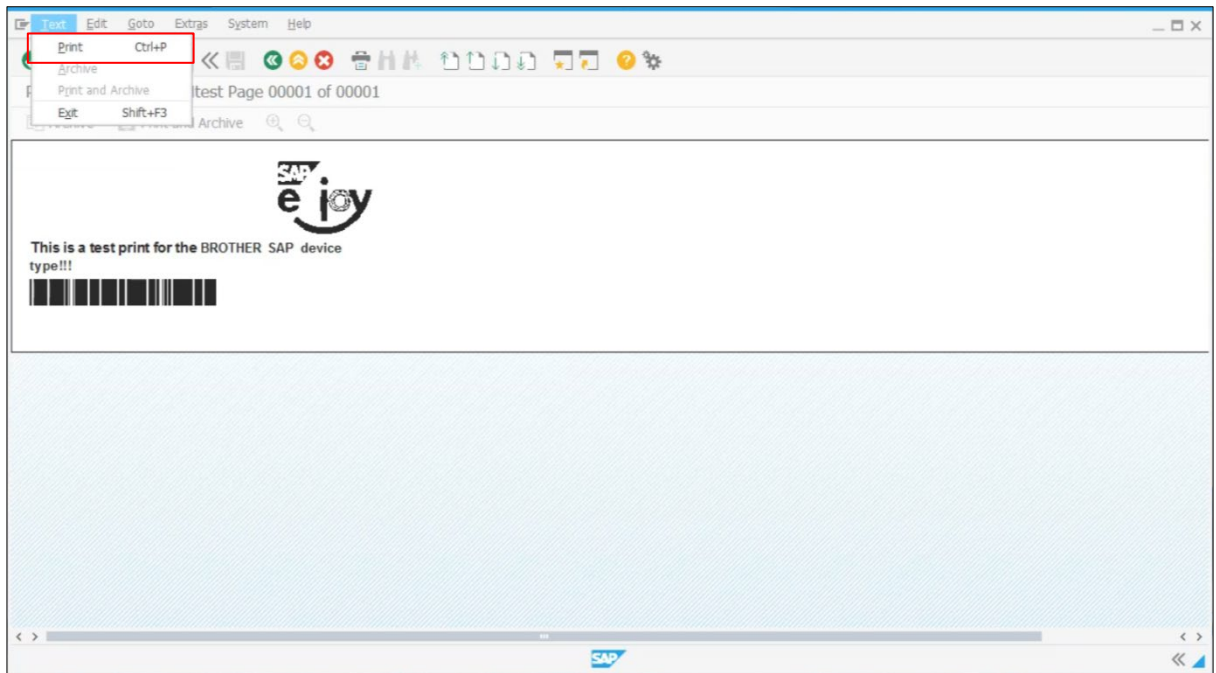


4. Select the Output Device name you created. Select the **Print Now** check box, and then click the **Print preview** button.

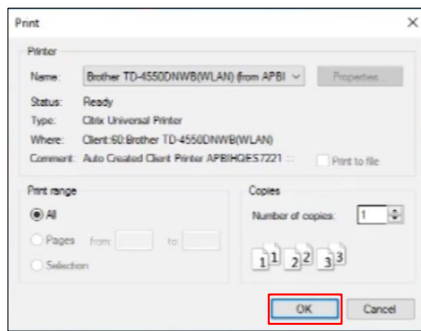




5. Go to **Text > Print**.



6. Click the **OK** button to print.



6. Model / Device Type List

Supported Label Printer model / device type combinations:

For Non-Unicode:

Label Printer Model	Device Type Name
TD-2020	BRT200LM
TD-2020A	BRT200LM
TD-2120N	BRT200LM
TD-2125N	BRT200LM
TD-2125NWB	BRT200LM
TD-2130N	BRT300LM
TD-2130NSA	BRT300LM
TD-2130ABK	BRT300LM
TD-2135N	BRT300LM
TD-2135NBK	BRT300LM
TD-2135NWB	BRT300LM
TD-2310D (203dpi)	BRT200LM
TD-2310D (300dpi)	BRT300LM
TD-2320D (203dpi)	BRT200LM
TD-2320D (300dpi)	BRT300LM
TD-2350D (203dpi)	BRT200LM
TD-2350D (300dpi)	BRT300LM
TD-2320DF (203dpi)	BRT200LM
TD-2320DF (300dpi)	BRT300LM
TD-2350DF (203dpi)	BRT200LM
TD-2350DF (300dpi)	BRT300LM
TD-2320DSA (203dpi)	BRT200LM
TD-2320DSA (300dpi)	BRT300LM
TD-2350DSA (203dpi)	BRT200LM
TD-2350DSA (300dpi)	BRT300LM
TD-2350DFSA (203dpi)	BRT200LM
TD-2350DFSA (300dpi)	BRT300LM
RJ-2030	BRT200LM
RJ-2050	BRT200LM
RJ-2140	BRT200LM
RJ-2150	BRT200LM
RJ-3050	BRT200LM
RJ-3050Ai	BRT200LM
RJ-3150	BRT200LM
RJ-3150Ai	BRT200LM
RJ-4230B	BRT200LM
RJ-4250WB	BRT200LM

RJ-3230B	BRT200LM
RJ-3250WB	BRT200LM
TD-4210D	BRT200LM
TD-4410D	BRT200LM
TD-4510D	BRT300LM
TD-4420DN	BRT200LM
TD-4520DN	BRT300LM
TD-4550DNWB	BRT300LM
TD-4420TN	BRT200
TD-4520TN	BRT300
TD-4650TNWB	BRT200
TD-4750TNWB	BRT300
TD-4650TNWBR	BRT200
TD-4750TNWBR	BRT300
RJ-2035B	BRT200
RJ-3035B	BRT200
RJ-2055WB	BRT200
RJ-3055WB	BRT200
TJ-4020TN	BRT200
TJ-4120TN	BRT300
TJ-4021TN	BRT200
TJ-4121TN	BRT300
TJ-4021TNR	BRT200
TJ-4121TNR	BRT300
TJ-4420TN	BRT200
TJ-4520TN	BRT300
TJ-4620TN	BRT600
TJ-4422TN	BRT200
TJ-4522TN	BRT300
TJ-4005DN	BRT200
TJ-4010TN	BRT200
PJ-822	BRT200LM
PJ-823	BRT300LM
PJ-862	BRT200LM
PJ-863	BRT300LM
PJ-883	BRT300LM

Properties:

- Supported languages: Character set "ISO 8859/1" (Latin 1)
- PDL: Zebra Programming Language 2

brother