



Linux Printer Driver Installation Guide for Brother Label Printers

Contents

Trademarks	1
1. Printer Driver Installation and Uninstallation.....	2
1.1 Driver Installation	2
1.2 Driver Uninstallation.....	2
2. Add and Delete Printers	3
2.1 Managing Printers using the CUPS Web Browser Interface	3
2.1.1 Add Printers.....	3
2.1.2 Modify Printer Settings.....	6
2.1.3 Delete Printers.....	8
2.2 Managing Printers using the Print Settings Application in GNOME™	9
2.2.1 Add Printers.....	9
2.2.2 Modify Printer Settings.....	12
2.2.3 Delete Printers.....	12
3. Configure Printers using the BarCode Printer Setting Application.....	13

Trademarks

Linux is a registered trademark of Linus Torvalds in the U.S. and other countries.

The GNOME logo and GNOME name are registered trademarks or trademarks of GNOME Foundation in the United States or other countries.

CUPS is a trademark of Apple Inc., registered in the U.S. and other countries.

1. Printer Driver Installation and Uninstallation

You need to be a superuser to install or uninstall the Brother printer driver.

If you are not logged in as a superuser, run the following command in the terminal:

```
su
```

1.1 Driver Installation

In the terminal, run the following commands to unzip and install the driver:

```
tar xzvf Brotherbarcodedriver-x.x.xx.tar.gz  
cd Brotherbarcodedriver -x.x.xx  
./install-driver
```

Where "x.x.xx" is the driver version.

Note:

If an earlier version of the driver is already installed, it will be overwritten with the new one.

1.2 Driver Uninstallation

In the terminal, run the following command to uninstall the driver:

```
/usr/local/share/genericbarcode/uninstall-driver
```

Note:

After you have uninstalled the printer driver, you must manually remove any printers from the system. For more information, see [2. Add and Delete Printers](#).

2. Add and Delete Printers

You can add or delete new printers using:

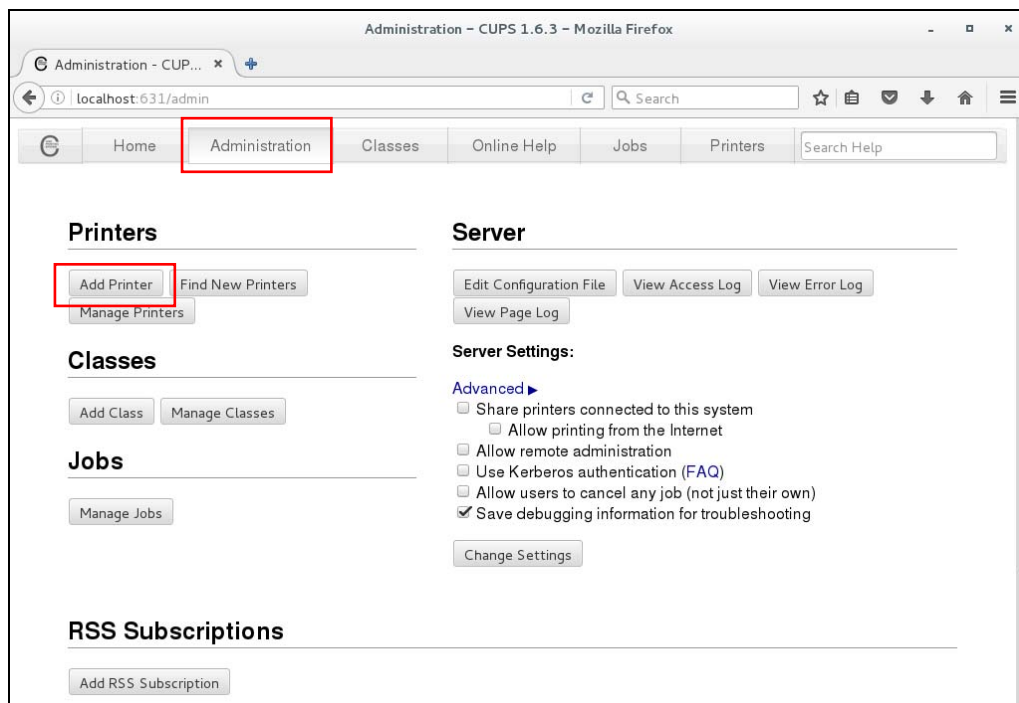
- The CUPS web browser interface
- The Print Settings application in GNOME™

2.1 Managing Printers using the CUPS Web Browser Interface

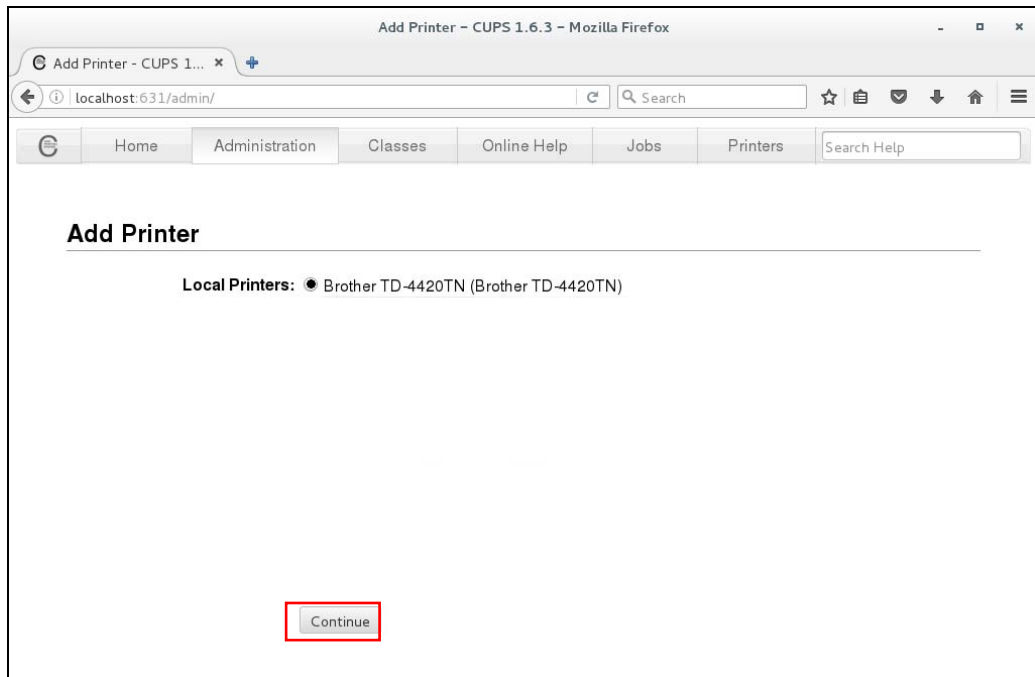
To access the CUPS web browser interface, open your browser and enter "http://localhost:631/" in the address bar.

2.1.1 Add Printers

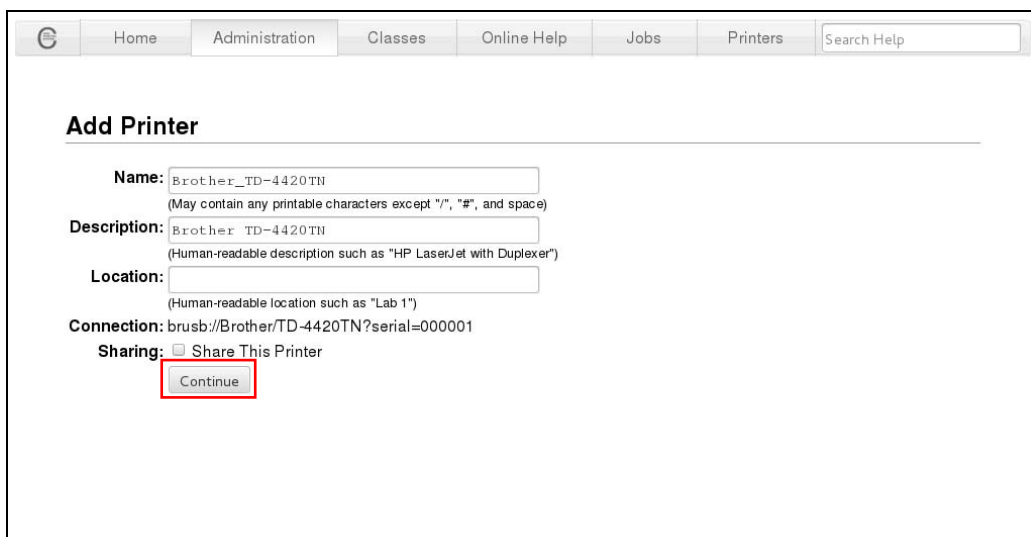
1. Click the **Administration** tab.
2. Click **Add Printer**.



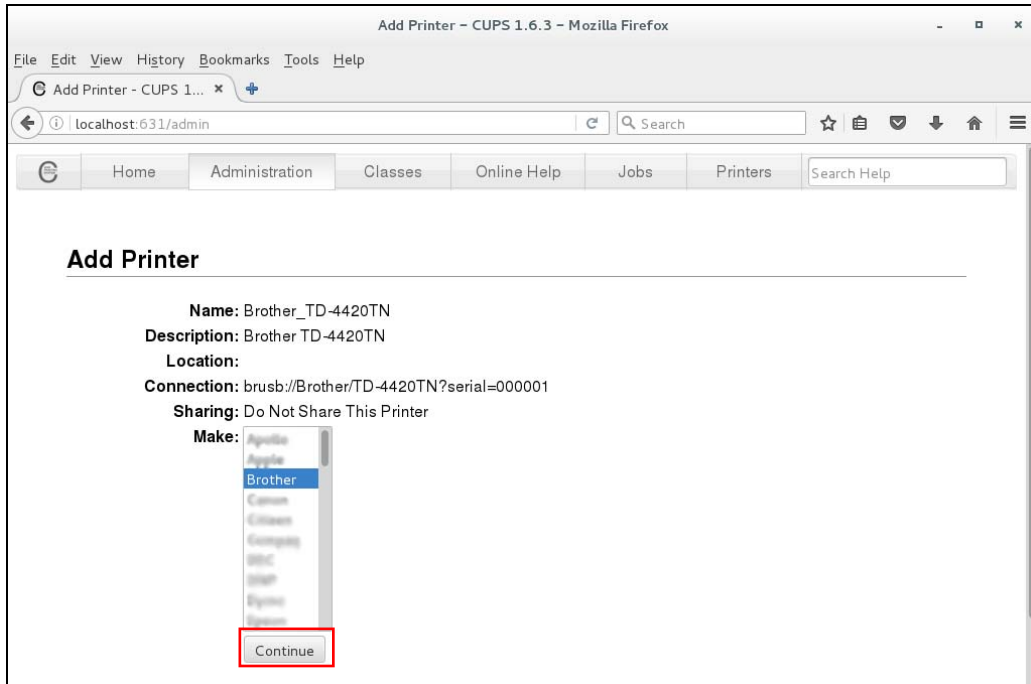
3. Select the printer you want to add, and then click **Continue**.



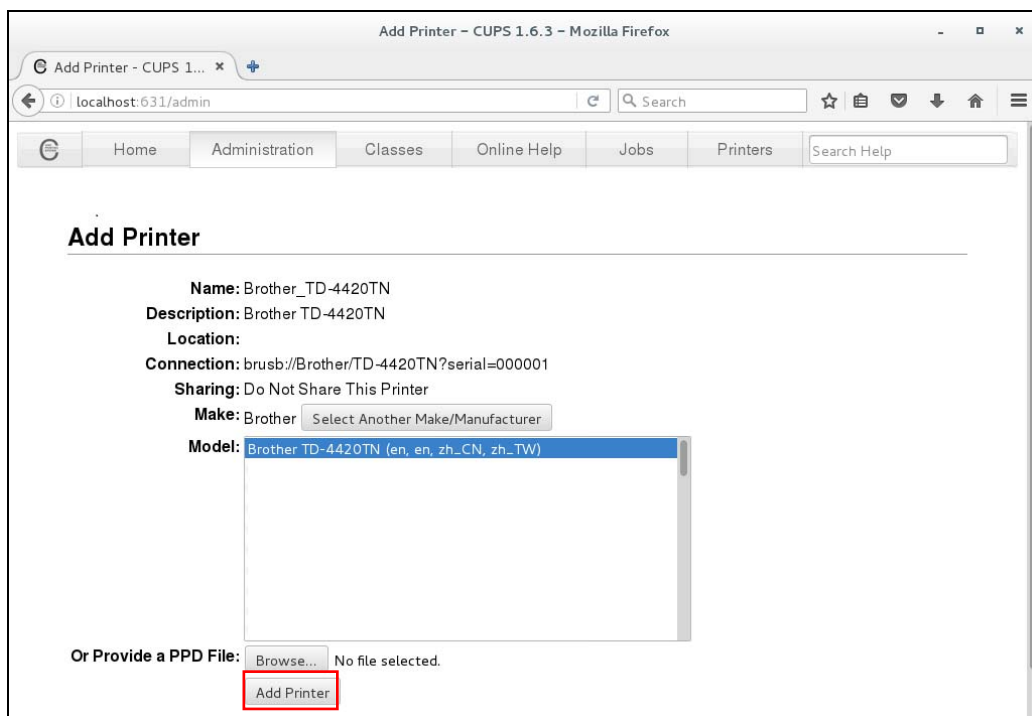
4. Enter the new printer information, and then click **Continue**.



5. Select **Brother** from the **Make** drop-down list, and then click **Continue**.

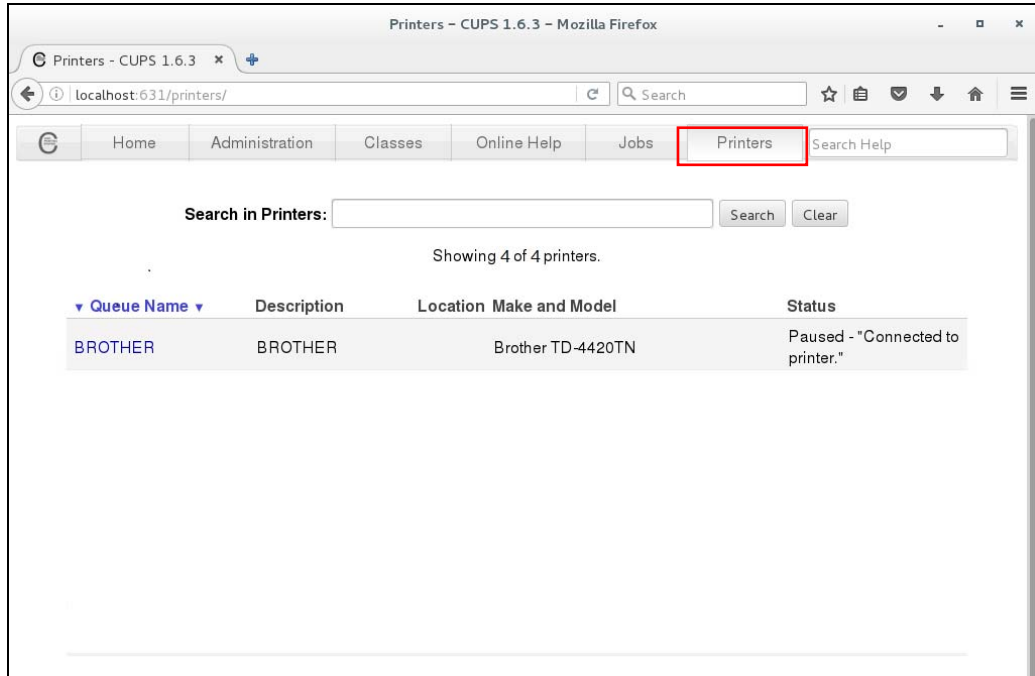


6. Select the printer model name, and then click **Add Printer**.

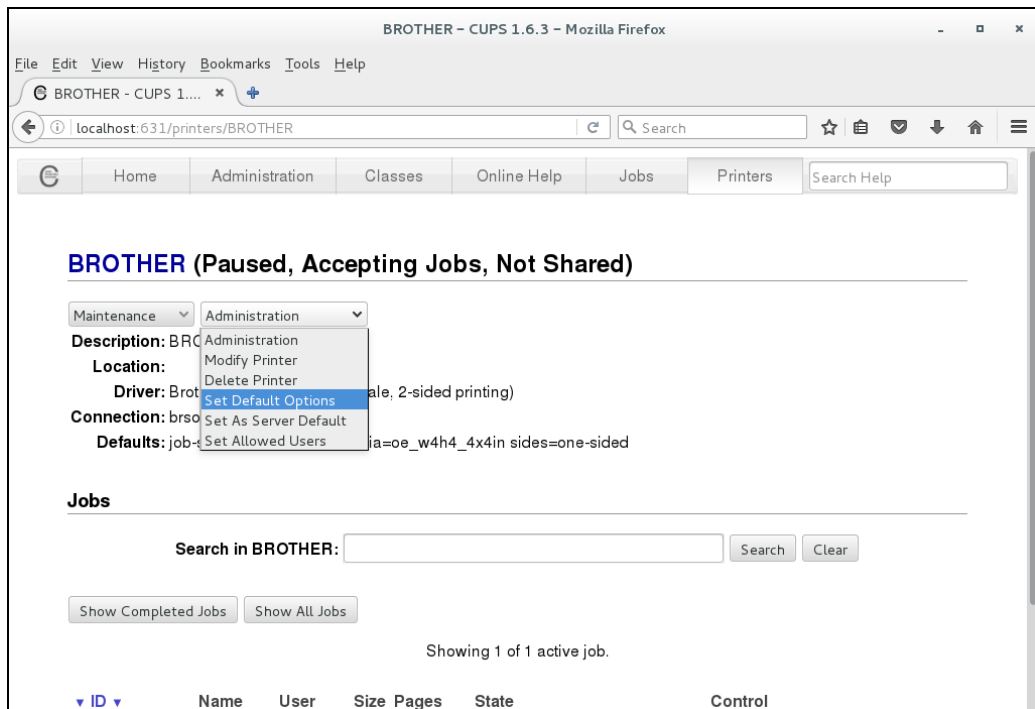


2.1.2 Modify Printer Settings

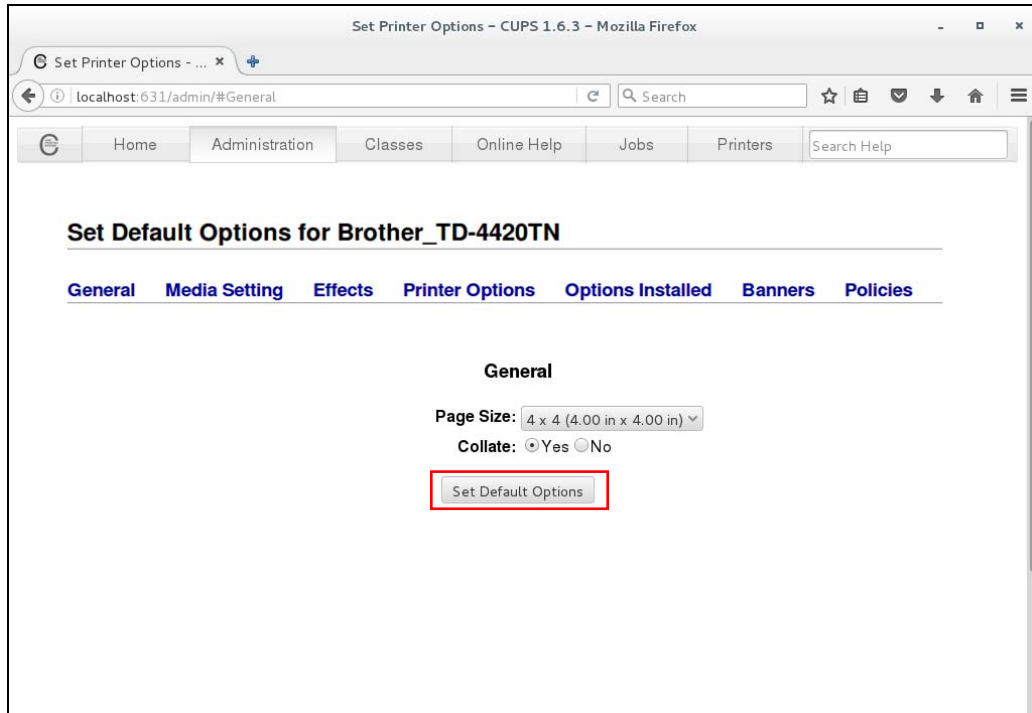
1. Click the **Printers** tab.
2. Select the printer from the list.



3. Select **Set Default Options** from the **Administration** drop-down list.

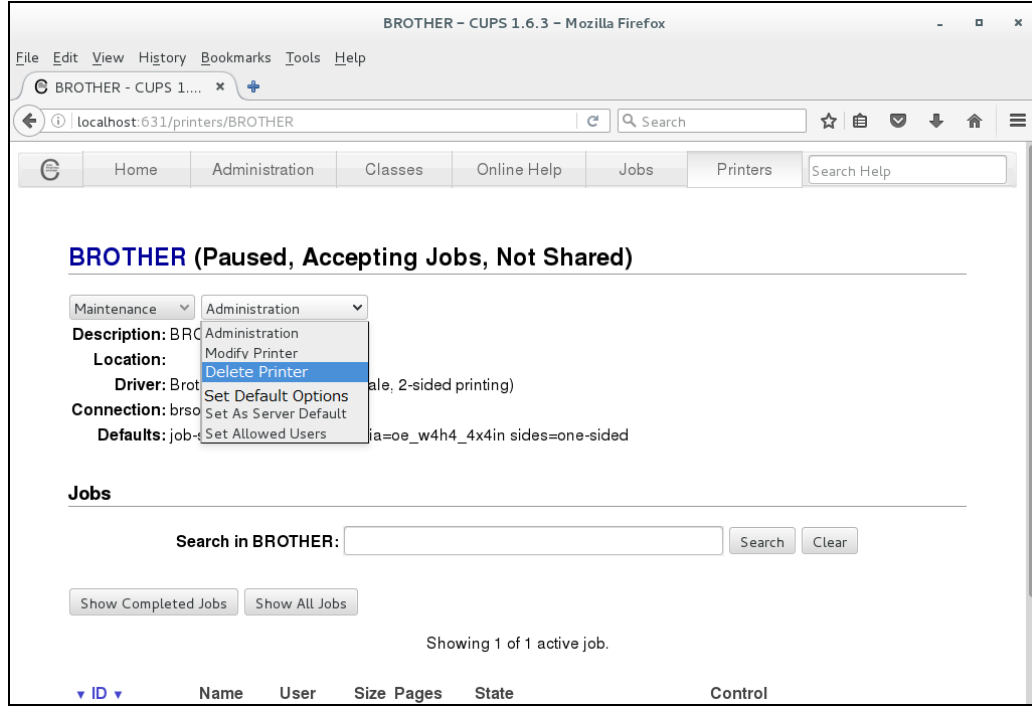


4. Modify the settings you want, and then click **Set Default Options** to save them.



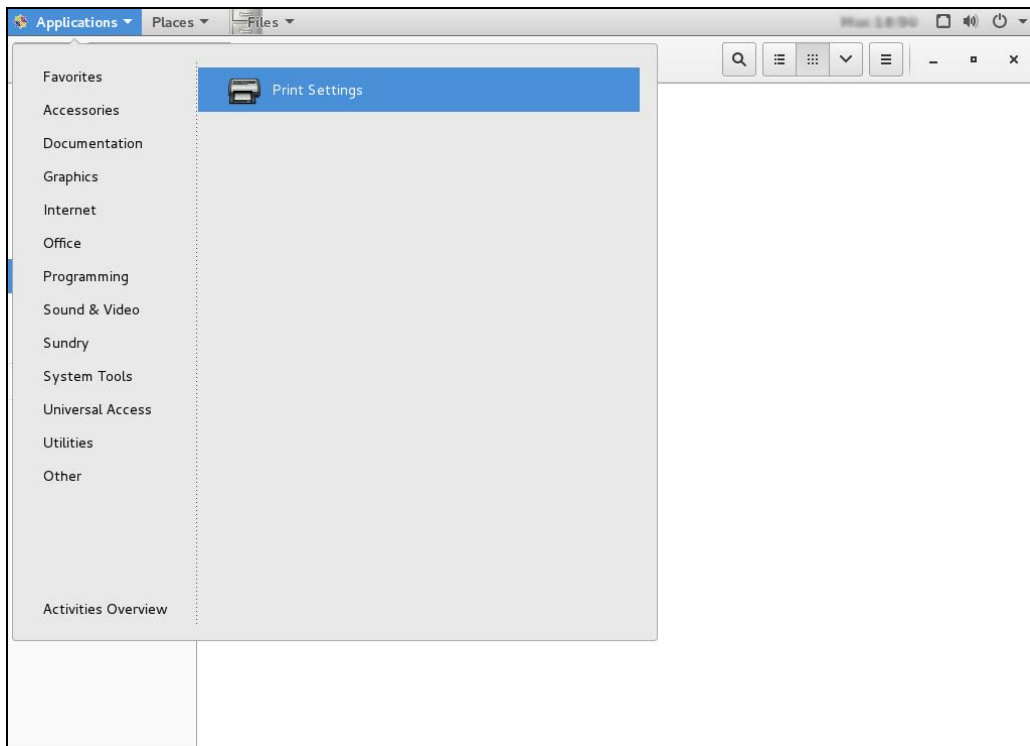
2.1.3 Delete Printers

1. Click the **Printers** tab, and then select the printer you want.
2. Select **Delete Printer** in the **Administration** drop-down list to delete the selected printer.



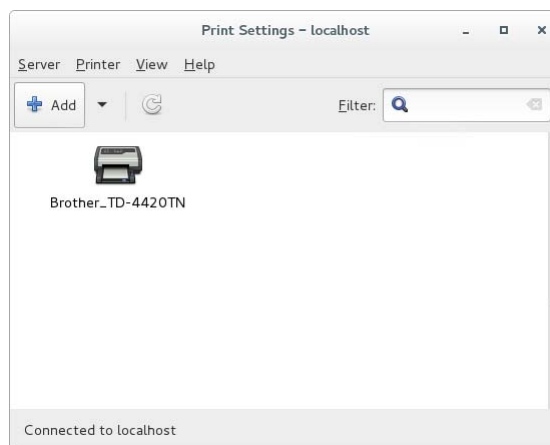
2.2 Managing Printers using the Print Settings Application in GNOME™

To run the Print Settings application, click **Applications > Print Settings**.

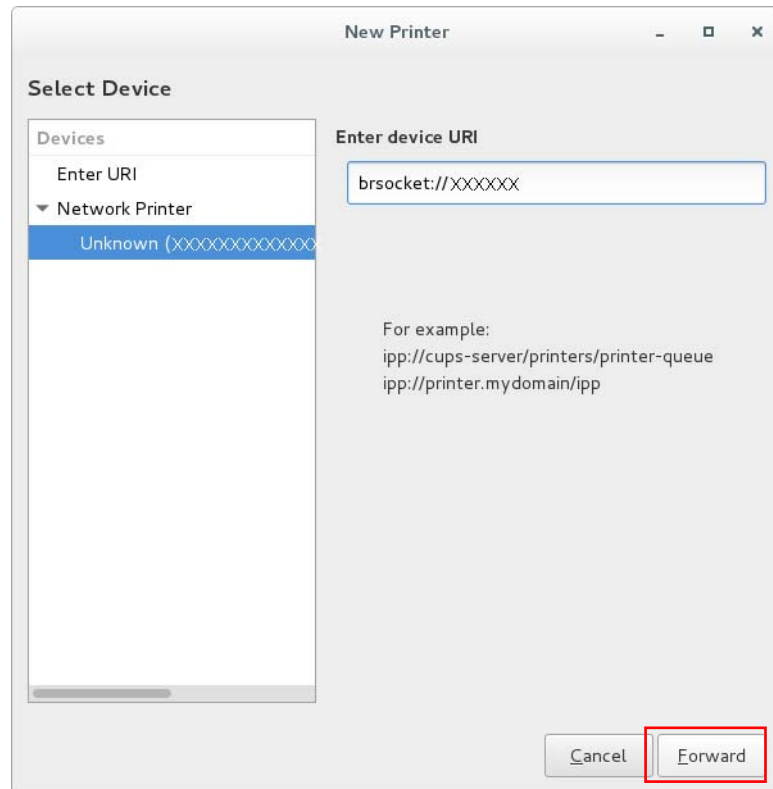


2.2.1 Add Printers

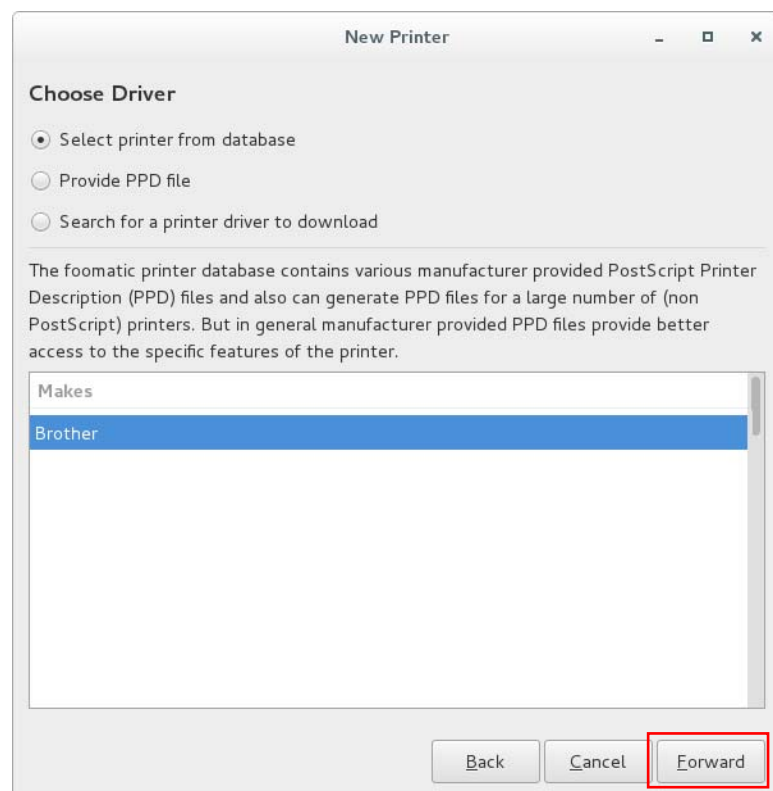
1. When the Print Settings window appears, click **Add**, and then select the printer you want.



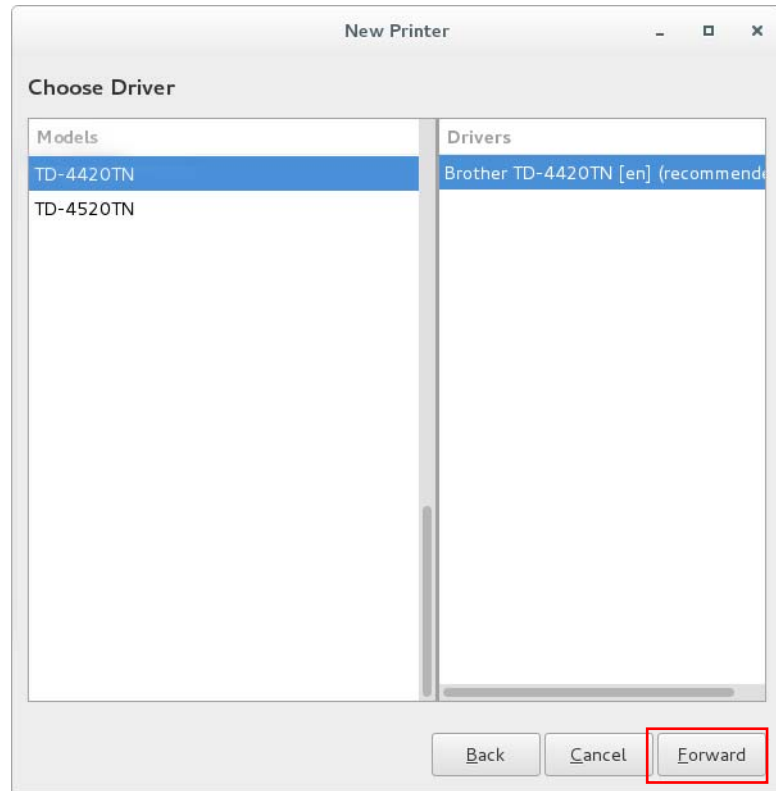
2. Select the printer you want from the **Devices** list, enter the IP address in the **Enter device URI** field, and then click **Forward**.



3. Make sure the **Select printer from database** radio button is selected, select **Brother** from the printer list, and then click **Forward**.



4. Select the printer model name and driver, and then click **Forward**.

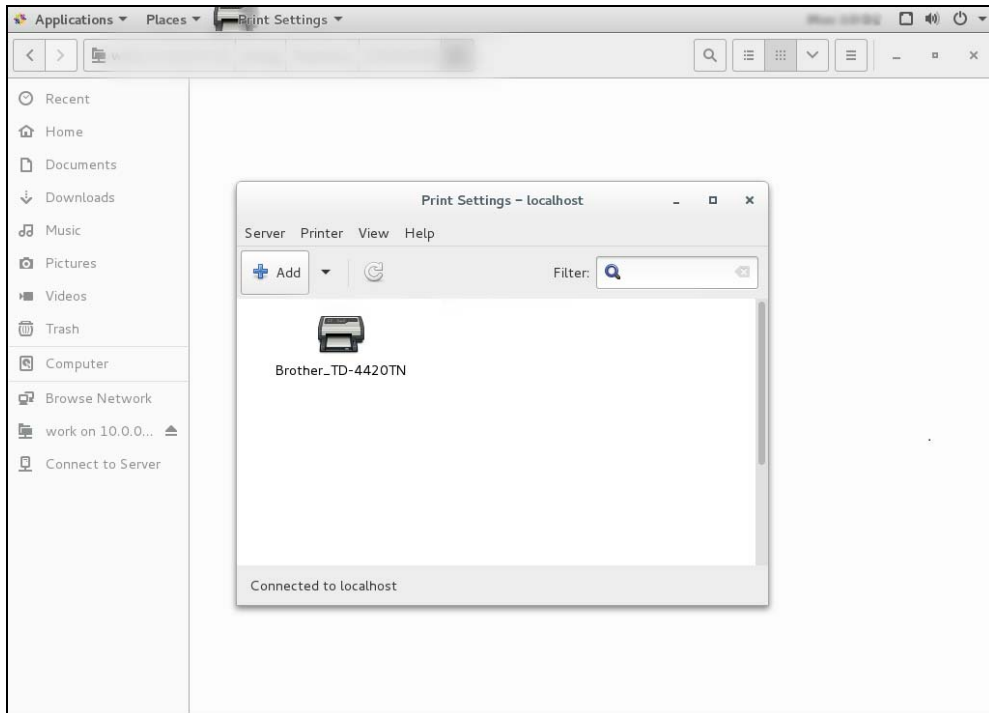


2.2.2 Modify Printer Settings

1. Select the printer you want, and then click **Printer Options** to modify its settings.

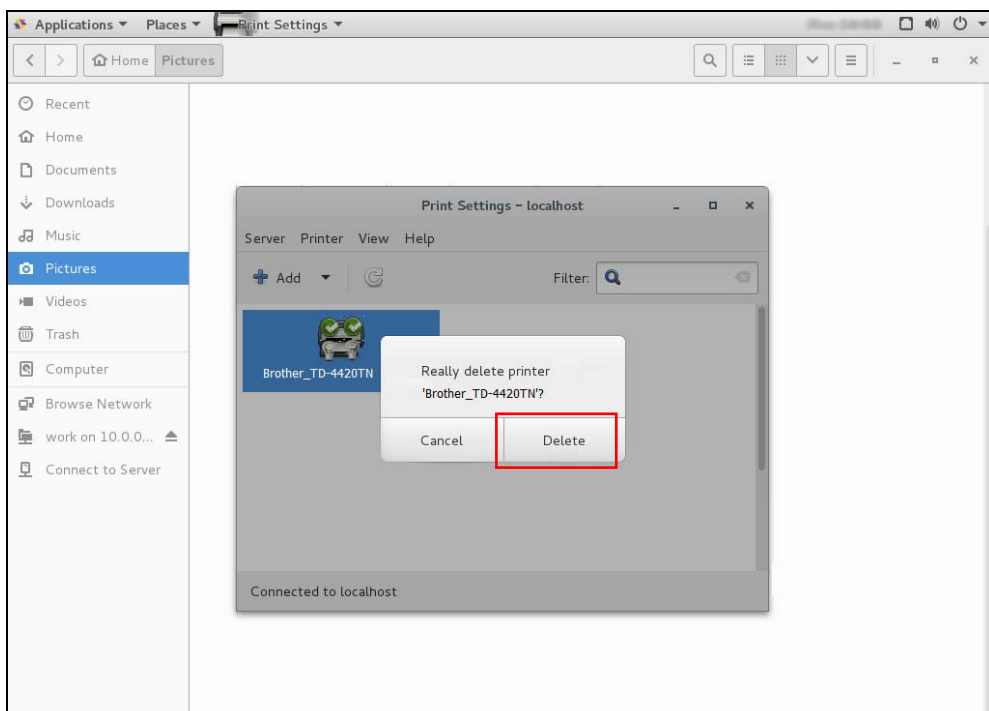
2. When finished, click **Apply** to save the new settings.

To restore the previous settings, press **Restore**.



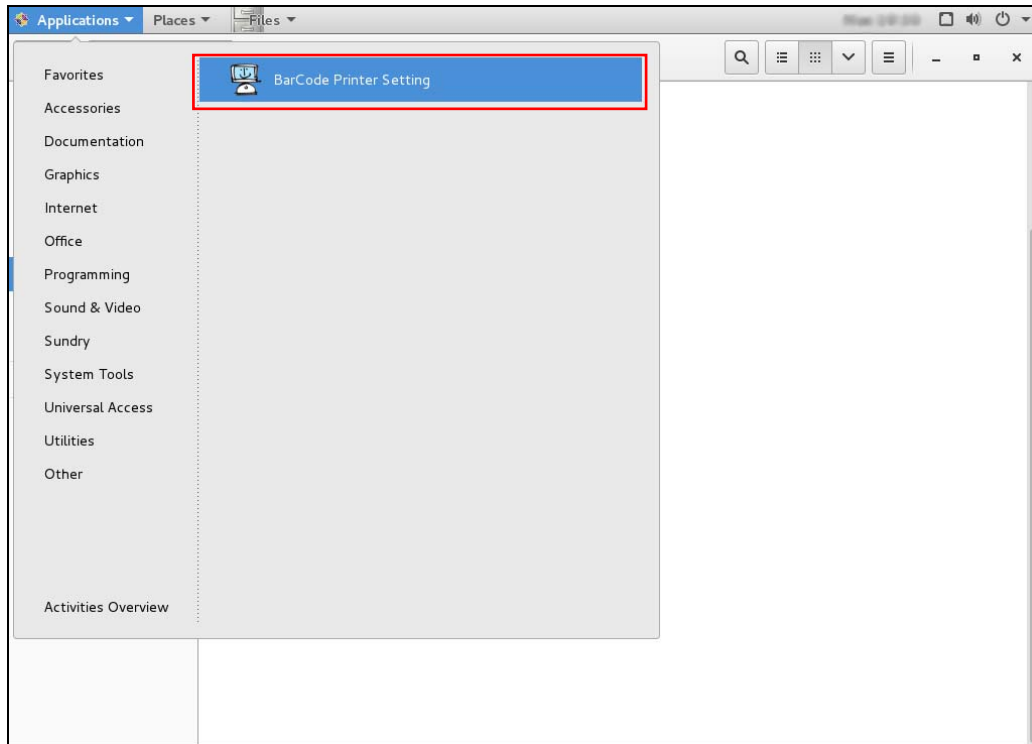
2.2.3 Delete Printers

Select the printer you want to delete, and then click **Delete**.

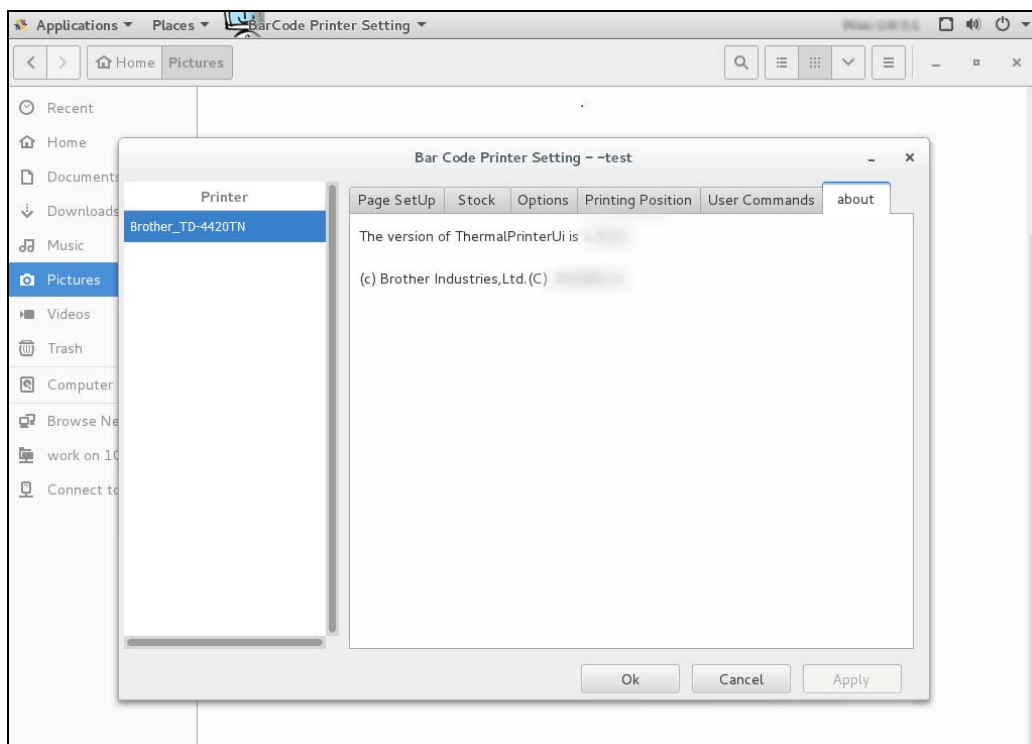


3. Configure Printers using the BarCode Printer Setting Application

The **BarCode Printer Setting** shortcut will appear in the **Applications** menu after the driver has been installed.



1. Select the printer you want and modify its settings.
2. When finished, click **Apply**.



brother