

Index

To save this PDF, select "Save" from the "File" menu.

The FAQ order in the Index is not identical to the order in the main text.

Getting Started

Installation

Software

- [Where can I find my Brother printer's serial number?](#)
- [How to install Brother software on a computer not connected to the Internet](#)
- [Install BRAdmin Professional 3](#)

Machine Setup

General Setup Procedures

- [How to install Brother software on a computer not connected to the Internet](#)
- [I cannot save a file downloaded from the Brother support website \(For Windows\)](#)
- [The paper settings specified from the server computer are not reflected on the client computer.](#)
- [Installing a CA certificate](#)
- [How do I connect RJ printer to my computer?](#)
- [How to charge the rechargeable Li-ion Battery.](#)
- [How to install the rechargeable Li-ion Battery](#)
- [How do I install/change the RD roll?](#)
- [How to connect to a DC power outlet \(Optional\)](#)
- [How to connect to an AC power outlet \(Optional\)](#)

Connecting to a Computer

USB

- [Printing is not possible. \(USB connection\)](#)
- [How do I connect RJ printer to my computer?](#)

Wireless LAN

- [How can I connect my printer wirelessly?](#)
- [How do I connect the printer to my computer via Wi-Fi®?](#)
- [How do I connect RJ printer to my computer?](#)

Wireless Direct

- [How can I connect my printer wirelessly?](#)
- [How do I connect the printer to my computer via Wi-Fi®?](#)

Wireless Ad-hoc Connections

- [How can I connect my printer wirelessly?](#)
- [How do I connect the printer to my computer via Wi-Fi®?](#)

Bluetooth (Computer Connection)

- [How do I connect RJ printer to my computer?](#)

Connecting to a Mobile Device

Wi-Fi

- [How can I connect the printer to my mobile device via Wi-Fi®?](#)

Mobile Applications

- [What Android™ mobile application can I use?](#)
- [What iOS mobile application can I use?](#)

Mobile App Compatibility

- [What iOS mobile application can I use?](#)
- [What Android™ mobile application can I use?](#)

Easy Tasks

P-touch Editor (Windows)

Numbering

- [How to use the Numbering function \(P-touch Editor 5.x for Windows\)](#)

Barcodes

- [The barcode number is not displayed below the barcode. \(P-touch Editor for Windows\)](#)
- [How to create a barcode from two data fields \(P-touch Editor 5.x for Windows\)](#)
- [Can I enlarge the size of bar code characters? \(P-touch Editor 5.x for Windows\)](#)
- [The printed bar code image is different from what I see on the P-touch Editor screen. \(P-touch Editor 5.x for Windows\)](#)
- [What are the definitions of each field in the bar code setup? \(P-touch Editor 5.x for Windows\)](#)
- [How do I create a label containing a bar code / QR code? \(P-touch Editor 5.x for Windows\)](#)
- [How to use Excel data to print labels \(P-touch Editor 5.x for Windows\)](#)

Layout

- [How to insert a new image into each label using a database file. \(P-touch Editor 5.x for Windows\)](#)
- [How can I automatically adjust the label length depending on the amount of text? \(P-touch Editor 5.x for Windows\)](#)
- [How do I combine vertical and horizontal characters on a label? \(P-touch Editor 5.x for Windows\)](#)
- [How do I create a label containing a table? \(P-touch Editor 5.x for Windows\)](#)
- [How do I print the inserted image maintaining its original size? \(P-touch Editor 5.x for Windows\)](#)
- [How do I save a layout style that I created? \(P-touch Editor 5.x for Windows\)](#)
- [How do I create name badges by joining the "First Name" and "Last Name" fields together? \(P-touch Editor 5.x for Windows\)](#)
- [How do I select just certain data \(cells\) in the Excel spreadsheet to place on the label? \(P-touch Editor 5.x for Windows\)](#)
- [How do I create an Address Label using Microsoft Word Add-In and formatting the text? \(P-touch Editor 5.x for Windows\)](#)
- [Creating an Address Label using the Add-In function with Microsoft Outlook \(P-touch Editor 5.x for Windows\)](#)
- [How can I print multiple copies of a label? \(P-touch Editor 5.x for Windows\)](#)
- [How do I create a label using a template? \(P-touch Editor 5.x for Windows\)](#)
- [How do I print vertical text? \(P-touch Editor 5.x for Windows\)](#)
- [How do I create an Address Label? \(P-touch Editor 5.x for Windows\)](#)

Add-ins

- [My format is reset to default once my label has been printed when running the Excel Add-In. \(P-touch Editor 5.x for Windows\)](#)

- [How do I select just certain data \(cells\) in the Excel spreadsheet to place on the label? \(P-touch Editor 5.x for Windows\)](#)
- [How to use the Add-In function in Microsoft applications \(P-touch Editor 5.x for Windows\)](#)
- [How do I create an Address Label using Microsoft Word Add-In and formatting the text? \(P-touch Editor 5.x for Windows\)](#)
- [Creating an Address Label using the Add-In function with Microsoft Outlook \(P-touch Editor 5.x for Windows\)](#)
- [I cannot register the Add-In in 64 bit editions of Microsoft Office 2010 / 2013 / 2016. \(P-touch Editor 5.x for Windows\)](#)

Templates

- [How do I transfer label or slip templates?](#)
- [How do I transfer label templates with P-touch Transfer Express?](#)
- [How to use Excel data to print labels \(P-touch Editor 5.x for Windows\)](#)
- [How do I create a label using a template? \(P-touch Editor 5.x for Windows\)](#)
- [How do I create a Name Badge Label using a template? \(P-touch Editor 5.x for Windows\)](#)

Printing

- [How to insert a new image into each label using a database file. \(P-touch Editor 5.x for Windows\)](#)
- [What types of image format can be inserted and printed? \(P-touch Editor 5.x for Windows\)](#)
- [How to add Microsoft® Excel text to a Label List \(P-touch Editor 5.x for Windows\)](#)
- [How do I select just certain data \(cells\) in the Excel spreadsheet to place on the label? \(P-touch Editor 5.x for Windows\)](#)
- [How to use Excel data to print labels \(P-touch Editor 5.x for Windows\)](#)
- [How do I open an Excel / Access file with the Database function? \(P-touch Editor 5.x for Windows\)](#)
- [How do I print labels with higher quality? \(P-touch Editor 5.x for Windows\)](#)

Using the Software

- [Can I edit or print data created in other applications? \(P-touch Editor 5.x for Windows\)](#)
- [What types of image format can be inserted and printed? \(P-touch Editor 5.x for Windows\)](#)
- [How do I save a layout style that I created? \(P-touch Editor 5.x for Windows\)](#)
- [What is the Label List? \(P-touch Editor 5.x for Windows\)](#)
- [How do I save the printer settings to a file? \(P-touch Editor 5.x for Windows\)](#)
- [How can I print multiple copies of a label? \(P-touch Editor 5.x for Windows\)](#)
- [How do I use the Screen Capture tool? \(P-touch Editor 5.x for Windows\)](#)
- [How do I create an Address Label? \(P-touch Editor 5.x for Windows\)](#)

Databases

- [How to insert a new image into each label using a database file. \(P-touch Editor 5.x for Windows\)](#)
- [How to create a barcode from two data fields \(P-touch Editor 5.x for Windows\)](#)
- [Can I edit or print data created in other applications? \(P-touch Editor 5.x for Windows\)](#)
- [How to add Microsoft® Excel text to a Label List \(P-touch Editor 5.x for Windows\)](#)
- [How do I create name badges by joining the "First Name" and "Last Name" fields together? \(P-touch Editor 5.x for Windows\)](#)
- [How do I select just certain data \(cells\) in the Excel spreadsheet to place on the label? \(P-touch Editor 5.x for Windows\)](#)
- [How to use Excel data to print labels \(P-touch Editor 5.x for Windows\)](#)
- [How do I open an Excel / Access file with the Database function? \(P-touch Editor 5.x for Windows\)](#)

Printing

Print Quality/Print Settings

- [How do I print labels with higher quality? \(P-touch Editor 5.x for Windows\)](#)
- [The print quality is poor, and the image is too light or dark.](#)
- [How to use the Paper Size Setup \(for Windows\)](#)

Network

Network Settings

- [How can I change the IP Address in order to use the product in a different network environment?](#)
- [How do I disable broadcasting the printer to AirPrint-compatible devices?](#)
- [How do I reset the network settings?](#)

Software

Printer Driver

- [How to delete the registry information and files related to the printer driver](#)
- [How do I uninstall the printer driver?](#)

Firmware

- [How to identify the printer's firmware version.](#)

Printer Setting Tool

- [Using the Communication Settings \(for Windows\)](#)
- [Using the Printer Setting Tool \(for Windows\)](#)
- [Using P-touch Template Settings](#)
- [How to use the Paper Size Setup \(for Windows\)](#)
- [Using the Device Settings \(for Windows\)](#)

P-touch Transfer Manager (Windows only)

- [How do I transfer label or slip templates?](#)
- [How do I transfer templates or other data from the computer to the printer?](#)
- [How do I transfer label templates with P-touch Transfer Express?](#)

P-touch Transfer Express

- [How do I transfer label or slip templates?](#)
- [How do I transfer label templates with P-touch Transfer Express?](#)

BRAdmin Professional

- [How do I transfer label or slip templates?](#)
- [How do I transfer label templates to the printer via network? \(BRAdmin Professional\)](#)

AirPrint

- [How do I disable broadcasting the printer to AirPrint-compatible devices?](#)

Machine

Reset Procedure

- [How do I reset the network settings?](#)

Print Printer Settings

- [How to identify the printer's firmware version.](#)
- [Can I print out the printer settings?](#)

Managing Your Machine with a Web Browser

- [Using Web Based Management](#)

- [Installing a CA certificate](#)

Printer Setting Tool

- [Using the Communication Settings \(for Windows\)](#)
- [Using the Printer Setting Tool \(for Windows\)](#)
- [Using the Device Settings \(for Windows\)](#)

Power Supply

- [Will my printer automatically turn itself off?](#)
- [How to charge the rechargeable Li-ion Battery.](#)
- [How to install the rechargeable Li-ion Battery](#)
- [How to connect to a DC power outlet \(Optional\)](#)
- [How to connect to an AC power outlet \(Optional\)](#)

Operations

- [How do I switch to and use the mass storage mode?](#)
- [How do I set the Label Peeler?](#)
- [How do I install/change the RD roll?](#)

Operating System

Mac

- [How to identify your Operating System \(OS\) for Windows or Mac](#)
- [How to open the Devices and Printers window](#)

Windows

- [My printed documents are incomplete or a blue screen appears when printing after a Windows 10 update \(March 2021\)](#)
- [I cannot save a file downloaded from the Brother support website \(For Windows\)](#)
- [How to identify your Operating System \(OS\) for Windows or Mac](#)
- [How to open the Devices and Printers window](#)

Linux

- [Installing the LPR driver and CUPS wrapper driver \(Linux®\)](#)
- [Adding a custom media size for continuous roll \(Linux\)](#)
- [Print free-length labels with the set length \(Linux\)](#)
- [I cannot print LibreOffice documents in landscape orientation. \(Linux\)](#)
- [Can I set a different media width when using an OpenOffice template? \(Linux\)](#)
- [I cannot install the driver on multiple versions of Linux \(Ubuntu 16.04 and 18.04, Mint 18.3 and 19\) and the message "Job completed, filter error or no driver" is displayed. \(Linux\)](#)
- [Uninstalling the printer drivers \(Linux\)](#)
- [I'm using RedHat Enterprise 7.2, Fedora 23. I cannot print to my Brother machine. \(Linux\)](#)
- [I'm using OpenOffice. Some of the print options that I have configured in OpenOffice do not work. \(Linux\)](#)
- [Creating a label with GIMP \(Linux\)](#)
- [Creating a label with OpenOffice \(Linux\)](#)
- [Is it possible to connect more than one machine to my PC? \(Linux\)](#)

Maintenance

Machine Maintenance

- [How do I clean my machine?](#)

Installation

Software

- [Where can I find my Brother printer's serial number?](#)
- [I cannot save a file downloaded from the Brother support website \(For Windows\)](#)

Troubleshooting

Software

Printer Driver

- [I cannot install the printer driver because the installation stops after I connect the printer to my computer.](#)
- [P-touch Editor displays "There is no printer driver installed with this application." \(Windows 10\)](#)
- [When printing from an application, the application's "Collate" setting does not work correctly.](#)

P-touch Update Software

- [Transfer Express cannot detect my printer when it is connected to a Windows 11 computer via USB.](#)

P-touch Transfer Manager (Windows only)

- [Transfer Express cannot detect my printer when it is connected to a Windows 11 computer via USB.](#)
- [The \[Transfer\] button does not appear in P-touch Transfer Manager. \(The \[Save Transfer File\] button remains displayed.\)](#)

P-touch Transfer Express

- [Transfer Express cannot detect my printer when it is connected to a Windows 11 computer via USB.](#)

P-touch Editor (Windows)

Print Quality

- [Some parts of the label are not printed. \(P-touch Editor 5.x for Windows\)](#)
- [My label is printing like a mirror image. How do I enable/disable the Mirror Printing option? \(P-touch Editor 5.x for Windows\)](#)
- [I created a template using P-touch Editor and transferred it to my printer. But the print result is different from what I see on the P-touch Editor screen.](#)

Media

- [The media width cannot be selected. Only standard paper sizes can be selected. \(P-touch Editor 5.x for Windows\)](#)

Databases

- [Why is the leading zero \(0\) missing after importing the database into P-touch Editor?](#)
- [When I try to use the database function, the error message "Code=800401f9 Msg: Error in the DLL Source: ADODB. Connection Description:" appears. What should I do?](#)

Add-ins

- [How to add Microsoft® Excel text to a Label List \(P-touch Editor 5.x for Windows\)](#)
- [The text format which is used with the Add-In Function differs from the original data. Why? \(P-touch Editor 5.x for Windows\)](#)
- [The P-touch Add-In is registered in Microsoft Word, but the P-touch icon or "Brother P-touch" in the Tools menu does not appear as normal. \(P-touch Editor 5.x for Windows\)](#)
- [The P-touch Add-In is registered in Microsoft Word or Excel, but it still cannot be used. \(P-touch Editor 5.x for Windows\)](#)
- [I cannot register the Add-In in 64 bit editions of Microsoft Office 2010 / 2013 / 2016. \(P-touch Editor 5.x for Windows\)](#)
- [P-touch Editor sometimes crashes. \(For Office 2013 or 2016 users\)](#)

Barcodes

- [The barcode number is not displayed below the barcode. \(P-touch Editor for Windows\)](#)
- [The printed bar code image is different from what I see on the P-touch Editor screen. \(P-touch Editor 5.x for Windows\)](#)

Error Messages

- [I get the message "OneDrive could not be accessed" and cannot open or save any files. \(P-touch Editor 5.1 / 5.2 for Windows\)](#)

Operations

- [Is there a way to automatically store or manage the label data? \(P-touch Editor 5.x for Windows\)](#)
- [I cannot select my printer name from the "Application Matching Printer" drop-down menu in the "Printer Setup" dialogue box. \(P-touch Editor 5.x for Windows\)](#)
- [The size of all characters is automatically reduced when more text is added. \(P-touch Editor 5.x for Windows\)](#)
- [The printing date/time is not printed. \(P-touch Editor 5.x for Windows\)](#)
- [My label is printing like a mirror image. How do I enable/disable the Mirror Printing option? \(P-touch Editor 5.x for Windows\)](#)
- [I get the message "OneDrive could not be accessed" and cannot open or save any files. \(P-touch Editor 5.1 / 5.2 for Windows\)](#)
- [I created a template using P-touch Editor and transferred it to my printer. But the print result is different from what I see on the P-touch Editor screen.](#)
- [P-touch Editor sometimes crashes. \(For Office 2013 or 2016 users\)](#)

Error Messages/LED Indications

LED Indications

- [What do the indicator lights mean?](#)
- [Wi-Fi lamp and Bluetooth are lit in blue but the printer cannot communicate with other devices via a wireless LAN.](#)
- [The power light is frequently blinking in orange indicating "Now Cooling", or a data transmission error appears on my computer when printing continuously. What should I do?](#)

Error Messages on your Computer's Screen

- [When I try to use the database function, the error message "Code=800401f9 Msg: Error in the DLL Source: ADO DB. Connection Description:" appears. What should I do?](#)
- [P-touch Editor displays "There is no printer driver installed with this application." \(Windows 10\)](#)
- [The power light is frequently blinking in orange indicating "Now Cooling", or a data transmission error appears on my computer when printing continuously. What should I do?](#)
- ["Setup start error code 2", \(also "code 193", "code 216" or "code 267"\) appears when I try to install the driver. What should I do?](#)
- [Error messages do not appear when using the USB connection of my printer.](#)

Connecting to a Computer

Installation Failure

- [The paper settings specified from the server computer are not reflected on the client computer.](#)
- [I cannot install the printer driver because the installation stops after I connect the printer to my computer.](#)
- [P-touch Editor displays "There is no printer driver installed with this application." \(Windows 10\)](#)
- ["Setup start error code 2", \(also "code 193", "code 216" or "code 267"\) appears when I try to install the driver. What should I do?](#)

Cannot Print

- [Printing is not possible. \(USB connection\)](#)
- [I cannot print in Windows 10 using Bluetooth even though my machine and computer are paired.](#)
- [I have an occasional problem printing.](#)

Wi-Fi

- [Wi-Fi lamp and Bluetooth are lit in blue but the printer cannot communicate with other devices via a wireless LAN.](#)

Bluetooth

- [I cannot print in Windows 10 using Bluetooth even though my machine and computer are paired.](#)
- [Wi-Fi lamp and Bluetooth are lit in blue but the printer cannot communicate with other devices via a wireless LAN.](#)

Network Settings

- [I have an occasional problem printing.](#)

Connecting to a Mobile Device

Bluetooth

- [Wi-Fi lamp and Bluetooth are lit in blue but the printer cannot communicate with other devices via a wireless LAN.](#)

Wi-Fi

- [Wi-Fi lamp and Bluetooth are lit in blue but the printer cannot communicate with other devices via a wireless LAN.](#)

Printing

Cannot Print

- [I cannot select my printer name from the "Application Matching Printer" drop-down menu in the "Printer Setup" dialogue box. \(P-touch Editor 5.x for Windows\)](#)
- [My printed documents are incomplete or a blue screen appears when printing after a Windows 10 update \(March 2021\)](#)
- [I connected multiple printers of the same model to one computer but can only print from one of them.](#)
- [Printing is not possible. \(USB connection\)](#)
- [When I print a long label or many labels continuously, printing stops suddenly before finishing. Why does this happen?](#)
- [I cannot print in Windows 10 using Bluetooth even though my machine and computer are paired.](#)
- [My machine has suddenly stopped printing.](#)
- [I have an occasional problem printing.](#)

Print Quality/Print Settings

- [Some parts of the label are not printed. \(P-touch Editor 5.x for Windows\)](#)
- [My printed documents are incomplete or a blue screen appears when printing after a Windows 10 update \(March 2021\)](#)
- [The print quality is poor, and the image is too light or dark.](#)
- [I created a template using P-touch Editor and transferred it to my printer. But the print result is different from what I see on the P-touch Editor screen.](#)
- [When printing from an application, the application's "Collate" setting does not work correctly.](#)
- [When I try to print multiple pages via Bluetooth from a Windows 8 computer, it takes a long time for the printing to start and finish.](#)

Layout

- [The size of all characters is automatically reduced when more text is added. \(P-touch Editor 5.x for Windows\)](#)
- [The printing date/time is not printed. \(P-touch Editor 5.x for Windows\)](#)
- [My label is printing like a mirror image. How do I enable/disable the Mirror Printing option? \(P-touch Editor 5.x for Windows\)](#)

Uninstallation

Printer Driver

- [How to delete the registry information and files related to the printer driver](#)
- [How do I uninstall the printer driver?](#)

Machine

Machine

- [Where can I find my Brother printer's serial number?](#)
- [When I print a long label or many labels continuously, printing stops suddenly before finishing. Why does this happen?](#)
- [How do I set the Label Peeler?](#)

Reset Procedure

- [How do I reset the network settings?](#)

Operations

- [The media width cannot be selected. Only standard paper sizes can be selected. \(P-touch Editor 5.x for Windows\)](#)

Operating System

Windows

- [My printed documents are incomplete or a blue screen appears when printing after a Windows 10 update \(March 2021\)](#)
- [Transfer Express cannot detect my printer when it is connected to a Windows 11 computer via USB.](#)

Linux

- [Installing the LPR driver and CUPS wrapper driver \(Linux®\)](#)
- [I get the "/usr/local/Brother/cupswrapper/cupswrapper\[model name\]: No such file or directory" error message while installing the CUPS driver on a Debian distribution \(such as Ubuntu or Kubuntu\). \(Linux®\)](#)
- [I cannot print and get the "lpadmin: PPD file cannot be copied!" error during installation \(Or "cp: '/usr/share/cups/model/\[file name\].ppd' cannot be started: No such file or directory"\) \(Linux®\)](#)
- [Adding a custom media size for continuous roll \(Linux\)](#)
- [Print free-length labels with the set length \(Linux\)](#)
- [I cannot install the CUPS driver and get a message that CUPS does not exist. \(Linux\)](#)
- [I cannot install the LPD/LPRng driver and get a message that LPD does not exist. \(Linux\)](#)
- [I cannot print LibreOffice documents in landscape orientation. \(Linux\)](#)
- [The driver installation finished successfully but I cannot print. \(Linux\)](#)
- [Can I set a different media width when using an OpenOffice template? \(Linux\)](#)
- [I have installed both the LPR and CUPS wrapper drivers, but I cannot print. \(Linux\)](#)
- [The continuous tape length is about 100 mm regardless of the OpenOffice tape template settings. \(Linux\)](#)
- [The printing position shifts vertically or horizontally. \(Linux\)](#)
- [I do not know how to become a superuser in Ubuntu. \(Linux\)](#)
- [I cannot print from GIMP on Linux.](#)
- [I cannot install or print with a distribution running SELinux \(such as Fedora\). \(Linux\)](#)
- [I cannot install the Linux drivers on multiple Brother printers. \(Linux\)](#)
- [I cannot print from RedHat or CentOS. \(Linux\)](#)
- [I cannot access the CUPS Web Interface \(http://localhost:631\) in Ubuntu. \(Linux\)](#)
- [PostScript data cannot be printed or is printed in the text format. \(Linux\)](#)
- [The print area is reduced when I print using the print preview button in OpenOffice. \(Linux\)](#)
- [I am using AppArmor and I cannot print. \(for Ubuntu and openSUSE\) \(Linux\)](#)
- [All print jobs have been cancelled and nothing can be printed. \(Linux\)](#)
- [I cannot print from the client computer to the printer on the print server. \(Linux\)](#)
- [I cannot save the edited text file. \(Linux\)](#)
- [Are there any drivers available for FreeBSD? \(Linux\)](#)
- [Large characters are printed incorrectly. \(Linux\)](#)
- [Disable or reconfigure SELinux. \(Linux\)](#)
- [When printing with Ubuntu 12.04, the print position shifts. \(Linux\)](#)
- [I cannot install the driver on multiple versions of Linux \(Ubuntu 16.04 and 18.04, Mint 18.3 and 19\) and the message "Job completed, filter error or no driver" is displayed. \(Linux\)](#)
- [Uninstalling the printer drivers \(Linux\)](#)
- [I'm using RedHat Enterprise 7.2, Fedora 23. I cannot print to my Brother machine. \(Linux\)](#)
- [I'm using OpenOffice. Some of the print options that I have configured in OpenOffice do not work. \(Linux\)](#)
- [Creating a label with GIMP \(Linux\)](#)
- [Creating a label with OpenOffice \(Linux\)](#)
- [Is it possible to connect more than one machine to my PC? \(Linux\)](#)

Installation

Software

- [P-touch Editor displays "There is no printer driver installed with this application." \(Windows 10\)](#)

Others

Maintenance

Machine Maintenance

- [How do I clean my machine?](#)

Specifications

Product

- [The paper settings specified from the server computer are not reflected on the client computer.](#)
- [Will my printer automatically turn itself off?](#)
- [How do I switch to and use the mass storage mode?](#)
- [How to charge the rechargeable Li-ion Battery.](#)
- [How to install the rechargeable Li-ion Battery](#)
- [How do I set the Label Peeler?](#)
- [How do I install/change the RD roll?](#)
- [How to connect to a DC power outlet \(Optional\)](#)
- [How to connect to an AC power outlet \(Optional\)](#)

Application

- [Is there a way to automatically store or manage the label data? \(P-touch Editor 5.x for Windows\)](#)
- [Can I edit or print data created in other applications? \(P-touch Editor 5.x for Windows\)](#)
- [What types of image format can be inserted and printed? \(P-touch Editor 5.x for Windows\)](#)
- [What is the Label List? \(P-touch Editor 5.x for Windows\)](#)
- [How do I create name badges by joining the "First Name" and "Last Name" fields together? \(P-touch Editor 5.x for Windows\)](#)
- [What iOS mobile application can I use?](#)
- [What Android™ mobile application can I use?](#)
- [How do I transfer label or slip templates?](#)
- [How do I transfer label templates to the printer via network? \(BRAdmin Professional\)](#)
- [P-touch Editor sometimes crashes. \(For Office 2013 or 2016 users\)](#)

Consumables&Accessories

- [How do I install/change the RD roll?](#)















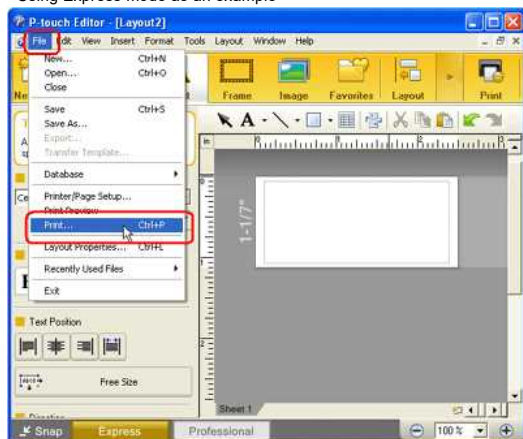
How do I print labels with higher quality? (P-touch Editor 5.x for Windows)

Your printer allows you to print labels with the fastest speed, or with the highest quality. **Speed priority mode is set as the default setting, and should be the setting used in most cases.** However, when you print labels containing barcodes and/or graphics, setting the print option to quality priority mode is recommended. In addition, changing to quality priority mode can make printing quieter.

Method 1:

1. Click **[File] - [Print]** in P-touch Editor.

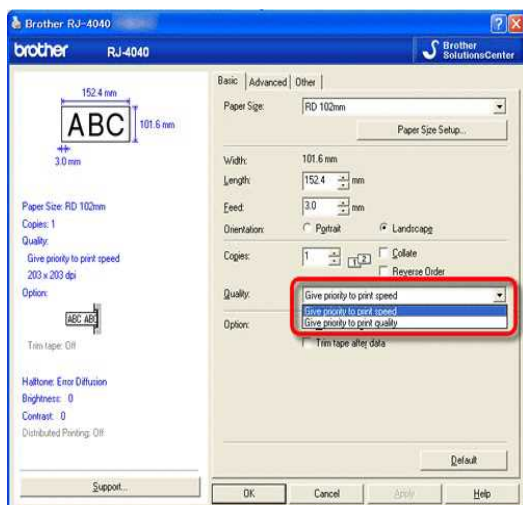
<Using Express mode as an example>



2. Click **"Properties"** in the Print dialogue box.



3. Change the **"Quality"** setting to **"Give priority to print quality"**. This change will return to the default value the next time you start P-touch Editor.



Method 2:

1. Open the printers folder. (To learn how to open the printers folder, see ["How to open the Devices and Printers window."](#))
2. Right-click the printer whose settings are to be changed, then select **[Printing Preferences]**.
3. Change the **"Quality"** setting to **"Give priority to print quality"**.

© 2001-2022 Brother Industries, Ltd. All Rights Reserved.

Any trade names and product names of companies appearing on Brother products, related documents and any other materials are all trademarks or registered trademarks of those respective companies.

When I print a long label or many labels continuously, printing stops suddenly before finishing. Why does this happen?

As the printer uses direct thermal (heat) technology, the inside of the machine can become too hot to print. When the temperature gets too high, the machine pauses printing to give the machine chance to cool down. While paused, the power lamp of the printer flashes in orange slowly, and at the same time you will see a dialogue box as shown below, informing you that the printer is cooling. (The dialogue box may be slightly different in each model.)



Once the temperature has dropped sufficiently, printing will resume automatically.

Related FAQs

▶ [The power light is frequently blinking in orange indicating "Now Cooling", or a data transmission error appears on my computer when printing continuously. What should I do?](#)

© 2001-2022 Brother Industries, Ltd. All Rights Reserved.

Any trade names and product names of companies appearing on Brother products, related documents and any other materials are all trademarks or registered trademarks of those respective companies.



I have an occasional problem printing.

Check the following to identify the cause of problem.

1. [Check if there is any router or DHCP server that can assign IP addresses automatically]
The automatic process may have assigned an IP address to the product with which the network communication cannot be established with the PC.
Configure IP addresses in the same local environment where the router or server does not exist when installing the product for the first time.
2. [There may be another device assigned with the same IP address, which may be responding to the "ping " command]
Check the IP address using the "arp -a" command, after sending a "ping" command.
Check the IP address of the devices on your network. If you find a duplicate IP address, assign a different IP address to one of the devices.
3. [Check if there is any security software function such as a firewall in the server or another network device]
The security software function may be interrupting network communication with the product. Disable the function to see if the problem continues.

© 2001-2021 Brother Industries, Ltd. All Rights Reserved.

Any trade names and product names of companies appearing on Brother products, related documents and any other materials are all trademarks or registered trademarks of those respective companies.





When I try to use the database function, the error message "Code=800401f9 Msg: Error in the DLL Source: ADODB. Connection Description:" appears. What should I do?

Follow the steps below:

1. Log on to your computer as an Administrator. If you are already logged on as an administrator, close all open applications and proceed to Step 2.
2. Click **[Start]** - **[Run...]**.
3. In the Open box, type "cmd", and then click **[OK]**.
4. At the command prompt, type the following lines pressing **[Enter]** after each line.

C: (where "C" is the letter of the drive on which Windows is installed)
cd program files\common files\system\ole db
regsvr32 oledb32.dll
regsvr32 oledb32r.dll
5. Click **[OK]** when you receive the message indicating that the operation succeeded.
6. Type "exit" to close [the command prompt] window.

© 2001-2022 Brother Industries, Ltd. All Rights Reserved.

Any trade names and product names of companies appearing on Brother products, related documents and any other materials are all trademarks or registered trademarks of those respective companies.











How do I use the Screen Capture tool? (P-touch Editor 5.x for Windows)

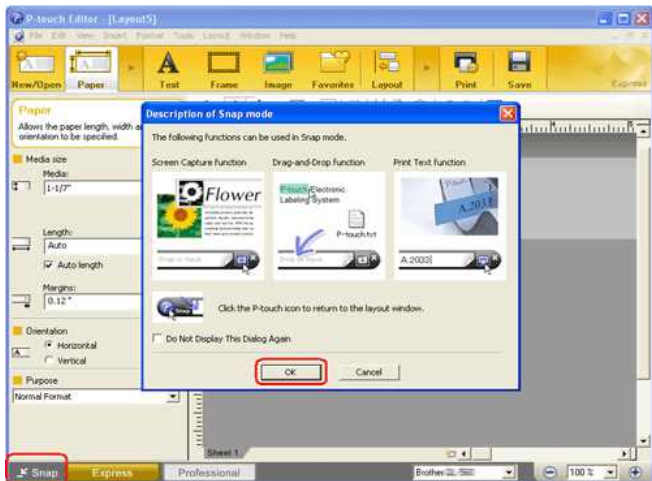
There are two ways to import the image of an area on your desktop/screen into a label.

Method 1: Using Snap mode

Method 2: Using Professional mode

- **Method 1: Using Snap mode**

1. Click the **Snap** button on the left bottom corner. The "Description of Snap mode" window appears. Click the **[OK]** button.



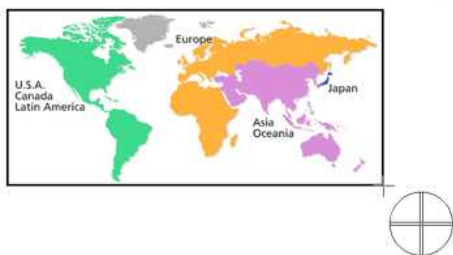
Snap mode starts.



2. Click the "Screen Capture" button. Snap mode disappears and the shape of the pointer changes.
3. Specify the area you want to import by drawing a rectangle around it. Click the start point of the area you want to select.

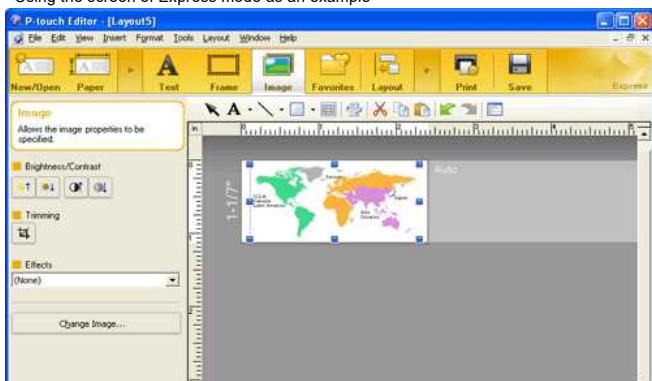


4. Click the end of the area.



5. The image data of the selected area is imported into the edit screen.

<Using the screen of Express mode as an example>



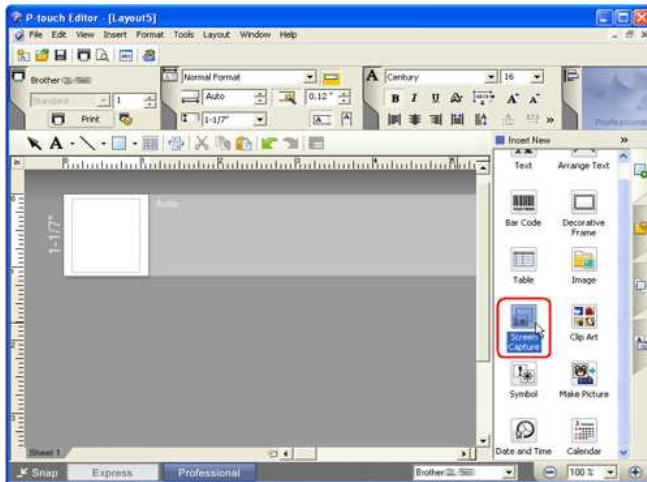


- You can also specify the area by dragging the mouse from the start point to the end point.
- When you want to cancel Screen Capture mode, click the right mouse button or press the Esc key.

• Method 2: Using Professional mode

Click the **Professional** button on the left bottom corner to change to Professional mode.

1. Click the **Screen Capture** button on the side bar. The current screen disappears and the shape of the pointer changes.



2. Take the same steps as Method 1 to import the data.

Related FAQs

- ▶ [How do I transfer templates or other data from the computer to the printer?](#)























































How do I transfer label templates to the printer via network? (BRAdmin Professional)

To transfer templates to the printer via network, you need BRAdmin Professional. Please download from the [Downloads](#) page and install it.

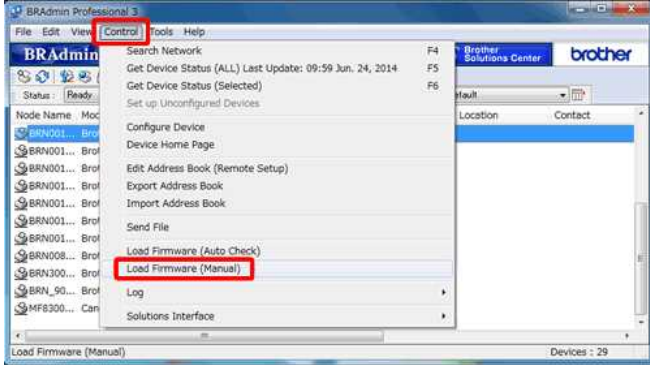
The following screens may differ depending on the model.

1. Create the template you want to transfer with P-touch Editor, then choose **[File] - [Transfer Template...]** menu to register. Transfer Manager will start up.

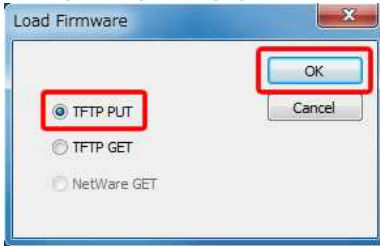
2. In Transfer Manager, click , or choose **[File] - [Save Transfer File]** menu to save the registered template in .bif format.

3. Start BRAdmin Professional.

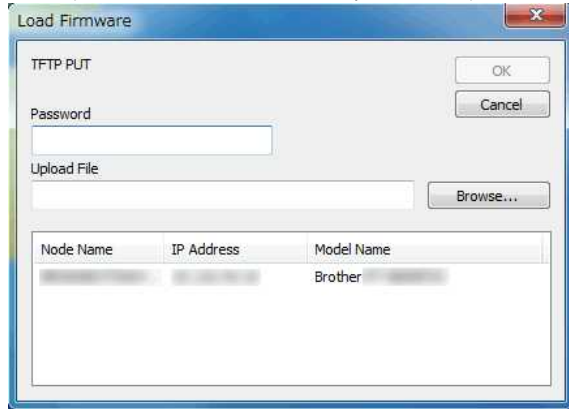
Choose the printer from the list and click on the **[Control]** menu. Select **[Load Firmware (Manual)]**.



4. Choose **[TFTP PUT]** and click **[OK]**.



5. Enter the password and choose the .bif file which you saved in step 2, then click **[OK]**.



The default user ID and login password to manage printer settings is one of the following combinations:

Combination	ID	Password
1	-	-
2	admin	access
3	-	initpass
4	-	The password preceded by "Pwd" and located either on the bottom of the printer or in the battery or media compartment.

For more information, see [\[IMPORTANT – Network Security Notice: Default Login Password Change\]](#) on the [\[Manuals\]](#) page.

Related FAQs

- ▶ [How do I transfer label templates with P-touch Transfer Express?](#)
- ▶ [How do I transfer templates or other data from the computer to the printer?](#)
- ▶ [How do I transfer label or slip templates?](#)

© 2001-2022 Brother Industries, Ltd. All Rights Reserved.

Any trade names and product names of companies appearing on Brother products, related documents and any other materials are all trademarks or registered trademarks of those respective companies.





The power light is frequently blinking in orange indicating “Now Cooling”, or a data transmission error appears on my computer when printing continuously. What should I do?

The thermal head or motor is too hot.

Head:

If the thermal head becomes even hotter, the thermal head may produce imaging on the paper in areas not intended to be printed. This condition is normal when printing documents with a great deal of “black” content.

The printer will stop and resume printing after the print head has cooled down.

Motor:

Do not use the printer continuously. If the printer is used continuously, the motor will become too hot. In this case, the printer will stop and resume printing after the motor has cooled down.

To avoid or delay the onset of this condition, print using a lighter density setting, reduce the amount of black space being printed (for example, remove background shading and colours in graphs and presentation documents), and make sure that the printer has adequate ventilation and is not located in an enclosed space.

© 2001-2021 Brother Industries, Ltd. All Rights Reserved.

Any trade names and product names of companies appearing on Brother products, related documents and any other materials are all trademarks or registered trademarks of those respective companies.

"Setup start error code 2", (also "code 193", "code 216" or "code 267") appears when I try to install the driver. What should I do?

This error appears when you download and install the wrong driver for your Operating System (OS).

Please check your OS again by referring to [<How to identify your Operating System \(OS\) for Windows or Macintosh.>](#) and re-install the correct driver.

Related FAQs

▶ [How to identify your Operating System \(OS\) for Windows or Mac](#)

© 2001-2022 Brother Industries, Ltd. All Rights Reserved.

Any trade names and product names of companies appearing on Brother products, related documents and any other materials are all trademarks or registered trademarks of those respective companies.





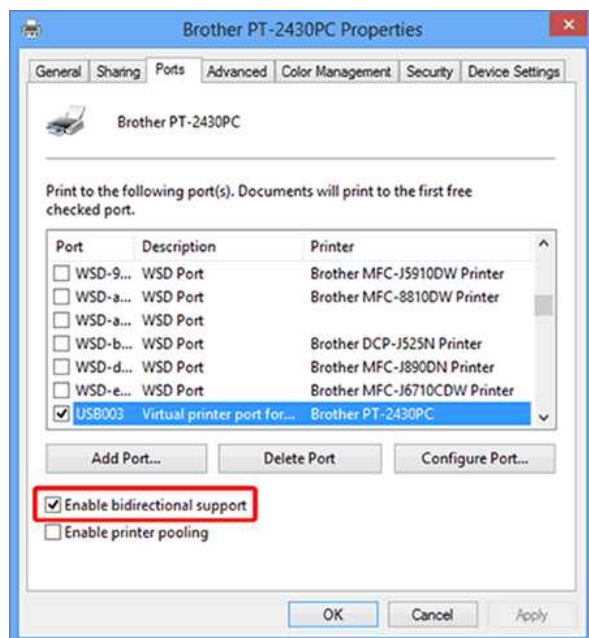
Error messages do not appear when using the USB connection of my printer.

After updating from Windows 8 to Windows 8.1, the "Enable bidirectional support" check box in the printer driver is cleared. This means the Windows print queue is unable to open, or display error messages.

To resolve the issue, download and install the latest version of the printer driver, or follow the procedure described below to select the "Enable bidirectional support" check box.

How to change the bidirectional support setting:

1. Click [Control Panel] in the [Apps] screen - [Hardware and Sound] - [Devices and Printers]. Right click the printer icon of your printer, and then click [Printer Properties].
2. Click the [Ports] tab in the printer Properties dialog box, and then select the "Enable bidirectional support" check box.
3. Click [OK].



© 2001-2022 Brother Industries, Ltd. All Rights Reserved.

Any trade names and product names of companies appearing on Brother products, related documents and any other materials are all trademarks or registered trademarks of those respective companies.

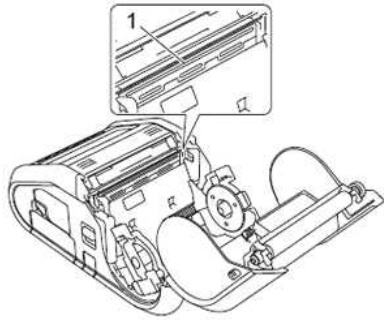




How do I clean my machine?

<Print Head Maintenance>

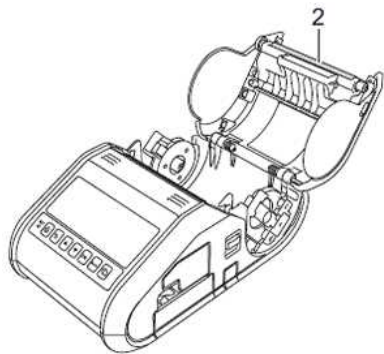
Use a dry cotton swab to wipe the print head.



1 Print head

<Roller Maintenance>

Use a piece of cellophane tape or a lint-free cloth to remove dirt from the roller. After cleaning the roller, make sure that no lint or other material remains on the roller.



2 Roller

<Paper Outlet Maintenance>

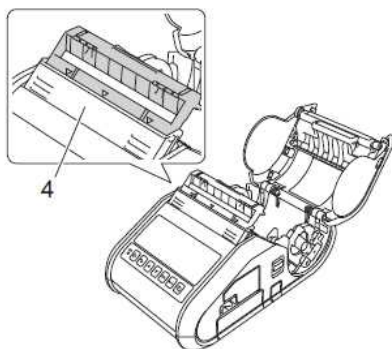
If adhesive accumulates at the paper outlet and media becomes jammed (for RJ-3150) or if the paper outlet becomes dirty, clean the paper outlet with a cloth slightly moistened with isopropyl alcohol.



3 Paper outlet

<Label Peeler Maintenance (RJ-3150 Only)>

If adhesive accumulates at the label peeler and media becomes jammed, remove the rechargeable Li-ion battery or disconnect the printer from the AC or DC power outlet, and then clean each part with a cloth slightly moistened with isopropyl alcohol.





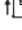



4 Label peeler

How do I reset the network settings?

Please follow the instructions below.

For RJ-3050

1. Press and hold the  (Power) button to turn the printer off.
2. Press and hold the  (Feed) button and the  (Power) button for about 3 seconds. The POWER, Wi-Fi and Bluetooth indicators start blinking (POWER: in orange; Wi-Fi and Bluetooth: in blue).
3. While pressing the  (Power) button, press the  (Feed) button once.
4. Release the  (Power) button.

For RJ-3150

1. Press **Menu**, **Up** or **Down** arrow button to select the **Administration** menu, and then press the **OK** button.
2. Select **Reset > Network Reset > Reset** using the **Up** or **Down** arrow button, and then press the **OK** button.

© 2001-2021 Brother Industries, Ltd. All Rights Reserved.

Any trade names and product names of companies appearing on Brother products, related documents and any other materials are all trademarks or registered trademarks of those respective companies.

How do I connect RJ printer to my computer?

The printer can be connected to your computer using a USB cable or a Bluetooth or Wi-Fi connection.

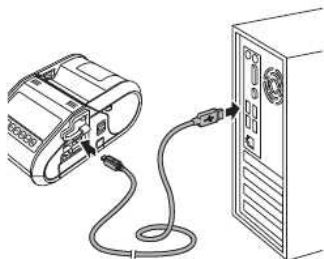


Install the printer driver before connecting the printer to the computer.
When connecting via Bluetooth, the connection settings are saved even after the printer is turned off.

- > [USB cable](#)
- > [Bluetooth](#)
- > [Wi-Fi](#)

[USB Connection]

1. Make sure that the printer is turned off before connecting the USB cable.
2. Connect the printer end of the USB cable to the USB port on the side of the printer.
3. Connect the other end of the USB cable to the USB port on the computer.



[Bluetooth Connection]



- Follow the recommendations of the manufacturer of your Bluetooth-equipped devices (computers and mobile devices) or Bluetooth adapter and install any necessary hardware and software.
- You can also change the printer's network settings using the Communication Settings.

Use this procedure to pair the printer with the computer using the Bluetooth management software.

1. For RJ-3050

Press and hold the  (Power) button to turn the printer on, and then press and hold the Bluetooth button.

For RJ-3150

- i. Press the **Menu**, **Up**, or **Down** arrow button to select the **Bluetooth** menu, and then press the **OK** button.
- ii. Set **Bluetooth (On/Off)** to **On**.

2. Use your Bluetooth management software to discover the printer.

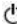
Bluetooth communication is now available.

[Wi-Fi Connection]



- In order for the printer and your network access point or router to communicate, you must first install the printer driver and the Printer Setting Tool.
- You can change the printer's network settings using the Communication Settings.
- The Communication Settings also allows you to easily apply the network setting changes to multiple printers.

1. For RJ-3050

Press and hold the  (Power) button to turn the printer on, and then press the Wi-Fi button.
Wi-Fi communication is now available.






For RJ-3150

- i. Press the **Menu**, **Up**, or **Down** arrow button to select the **WLAN** menu, and then press the **OK** button.
- ii. Set **WLAN (On/Off)** to **On**.

Wi-Fi communication is now available.

What do the indicator lights mean?






The indicators light and blink to indicate the printer's status. The following symbols are used in this section to explain the meaning of the different indicator colours and patterns.

-  Indicator is lit in the colour shown
-  Indicator is blinking in the colour shown
-  Indicator blinks 1 or 2 times in each colour, then turns off
-  Indicator is lit or blinking in any colour or pattern
-  Indicator is off

RJ-3050 only

POWER	STATUS	Wi-Fi	Bluetooth	Description
				Power on
				Roll cover open
				Receiving data Transferring data
				Error Print error Feed error Cover open error Communication error Image processing error Database search error No template error Access point search error Access point connection error Security error >> See below for more information
				Error Battery error Mass storage error
				System error
		 (Once every 3 seconds)		Wireless on, not connected
				Wireless on, connected
		 (Once every second)		Now setting WPS
				Bluetooth on
			 (Once every second)	Pairing with Bluetooth
				Now resetting
				Formatting complete (When [Print Data after Printing] is set to [Erase All Print Data])
				Now cooling >> See below for more information
				In mass storage mode
				Processing file in mass storage mode
				Initialising

RJ-3050 and RJ-3150

Battery	Description
 (Once every second)	Battery needs recharging
 (Twice every 4 seconds)	Rechargeable battery power: low
 (Once every 4 seconds)	Rechargeable battery power: half
	Charging
	Rechargeable battery power: full Charging complete

Indicator Warnings

The POWER indicator does not light

The printer is receiving no power.

If you are using AC or DC power, make sure that the AC adapter or Car adapter is properly connected and make sure that the AC or DC power outlet is turned on.

If you are using DC power, check the fuse.

Head or motor is cooling down

The thermal head or motor is too hot.

Head:

If the thermal head becomes even hotter, the thermal head may produce imaging on the paper in areas not intended to be printed. This condition is normal when printing documents with a great deal of "black" content.

The printer will stop and resume printing after the print head has cooled down.

To avoid or delay the onset of this condition, print using a lighter density setting, reduce the amount of black space being printed (for example, remove background shading and colours in graphs and presentation documents), and make sure that the printer has adequate ventilation and is not located in an enclosed space.

Motor:

Do not use the printer continuously. If the printer is used continuously, the motor will become too hot. In this case, the printer will stop and resume printing after the motor has cooled down.



This condition may occur more often when the printer is used at high altitude (more than 10,000 feet) due to a lower air density available to cool the printer.

Data reception error

Data may not be received correctly when communications are unstable. Try connecting again when communication conditions have improved.

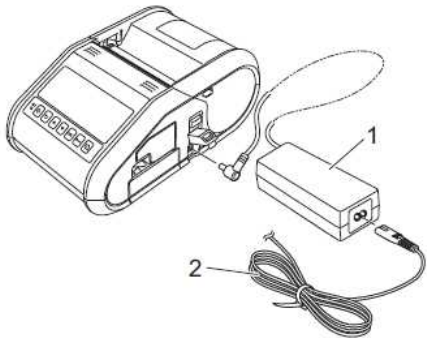
Printer is in boot mode

The AC adapter was unplugged while the firmware was being updated, and the printer started up in boot mode the next time it was started. Contact your reseller or Brother Customer Service for assistance.

How to connect to an AC power outlet (Optional)

Connect the printer to a nearby AC power outlet to charge the rechargeable battery.

1. Connect the AC adapter to the printer.
2. Connect the AC power cord to the AC adapter.
3. Connect the AC power cord to a nearby AC power outlet (100 - 240 VAC, 50 - 60 Hz).



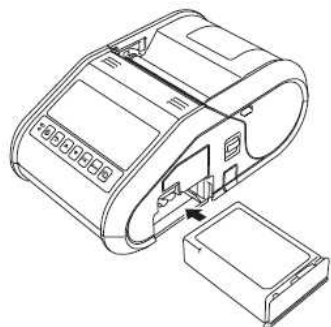
- 1. AC adapter**
- 2. AC power cord**



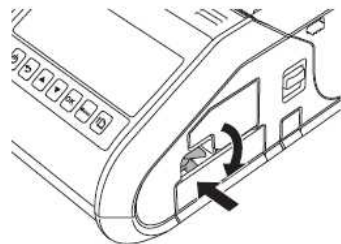
The AC adapter and AC power cord are optional accessories. When purchasing, purchase the adapter and power cord appropriate for the region where the printer will be used.

How to install the rechargeable Li-ion Battery

1. Make sure that the battery latch is lifted up, and then insert the battery into the battery compartment with the battery cover attached to the battery. Make sure that the terminal end of the battery is facing inward.



2. With the battery inserted and while pushing the battery lightly into the cavity, lower the battery latch until it clicks locking the battery in place.



Removing the Rechargeable Li-ion Battery

While pushing the battery lightly, lift the battery latch to unlock the battery, and then remove the battery.

Related FAQs

- ▶ [How to charge the rechargeable Li-ion Battery.](#)

© 2001-2021 Brother Industries, Ltd. All Rights Reserved.

Any trade names and product names of companies appearing on Brother products, related documents and any other materials are all trademarks or registered trademarks of those respective companies.

How to charge the rechargeable Li-ion Battery.

The rechargeable Li-ion battery can be charged while it is inserted in the printer.
Perform the following procedure to charge the rechargeable Li-ion battery.



- Before using the rechargeable Li-ion battery, use the following procedure to charge it.
- Fully charge a new battery. Initial charging will take about 3 hours.
- Print speed varies with the available battery voltage.

1. Make sure that the rechargeable Li-ion battery is installed in the printer.
2. Use the AC adapter and AC power cord to connect the printer to an AC power outlet, or use the car adapter to connect the printer to a DC power outlet.



The battery indicator light is orange when the battery is charging. When the rechargeable Li-ion battery is fully charged, the battery indicator light turns off. Disconnect the AC adapter or car adapter from the DC connector.

Related FAQs

- ▶ [How to install the rechargeable Li-ion Battery](#)

© 2001-2021 Brother Industries, Ltd. All Rights Reserved.

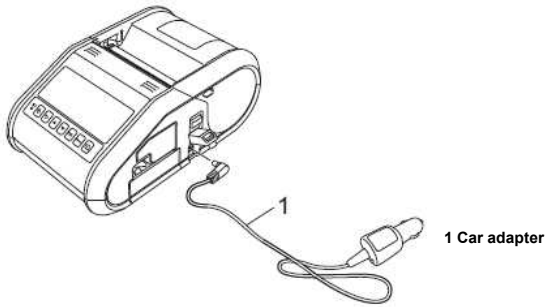
Any trade names and product names of companies appearing on Brother products, related documents and any other materials are all trademarks or registered trademarks of those respective companies.



How to connect to a DC power outlet (Optional)

Connect the printer to your vehicle's 12 V DC power outlet (cigarette lighter, etc.) to charge the rechargeable battery.

1. Connect the car adapter to the vehicle's 12 V DC power outlet.
2. Connect the car adapter to the printer.



The car adapter is an optional accessory.

Wi-Fi lamp and Bluetooth are lit in blue but the printer cannot communicate with other devices via a wireless LAN.

First you must configure the wireless network settings of your printer to communicate with other devices via a wireless LAN.
After the printer is configured, computers on your network will have access to the printer.

To use the printer from these computers, you will need to install the drivers and software.

You can use the **Communication settings** in the **Printer Setting Tool** to easily configure network settings or check the status of multiple printers.

- [For more information on using the Communication settings, please click here.](#)

Related FAQs

▶ [What do the indicator lights mean?](#)

© 2001-2021 Brother Industries, Ltd. All Rights Reserved.

Any trade names and product names of companies appearing on Brother products, related documents and any other materials are all trademarks or registered trademarks of those respective companies.

Using the Communication Settings (for Windows)

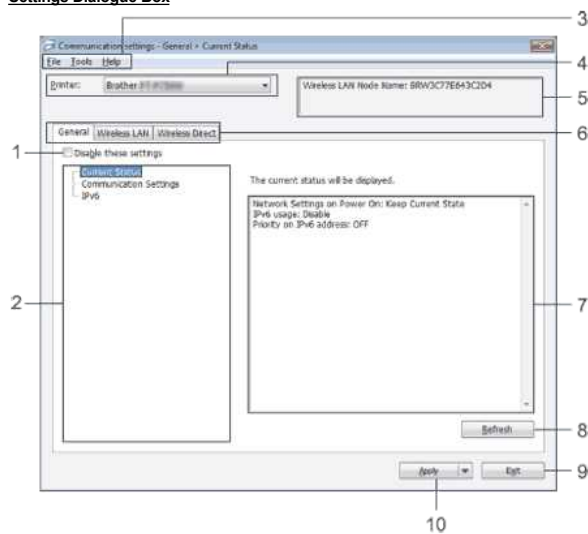
To use the Communication settings, please follow the steps below:

1. Open the Printer Setting Tool. (Refer to "[Using the Printer Setting Tool \(for Windows\)](#)".)
2. Select [**Communication settings**].
[**Communication settings**] window appears.
3. Specify or change the settings.


For information on items in the Communication settings window, refer to the following links (the screens are from Windows):


- [Settings Dialogue Box](#)
- [Menu Bar](#)
- [General Tab](#)
- [Wireless LAN Tab](#)
- [Wireless Direct Tab](#)
- [Bluetooth Tab](#)
- [Applying Setting Changes to Multiple Printers](#)

Settings Dialogue Box



1. Disable these settings

When this check box is selected,  appears in the tab, and the settings can no longer be specified or changed.

The settings in a tab where  appears will not be applied to the printer even if [**Apply**] is clicked. In addition, the settings in the tab will not be saved or exported when [**Save in Command File**] or [**Export**] command is executed.

To apply, save or export the settings to the printer, be sure to clear the check box.

2. Items

When [**Current Status**] is selected, the current settings appear in the settings display / change area.

Select the item for the settings that you want to change.

3. Menu Bar

Select a command contained in each menu from the list.

For details on the menu bar, see [Menu Bar](#).

4. Printer

Selects the printer whose settings are to be changed.


If only one printer is connected, it is unnecessary to make a selection since only that printer will appear.

5. Node Name

Displays the node name. The node name can also be changed. (See [Tools menu](#).)

6. Settings Tabs

Click the tab containing the settings to be specified or changed.

If  appears in the tab, the settings in that tab will not be applied to the printer.

7. Settings Display / Change Area

Displays the current settings for the selected item. Change the settings as necessary using the drop-down menus, direct entry or other appropriate methods.

8. Refresh

Click to update the displayed settings with the most recent information.

9. Exit

Exits [**Communication settings**], and returns to the main window of [**Printer Setting Tool**].



Settings are not applied to printers if the [**Exit**] button is clicked without first clicking [**Apply**] button after changing settings.

10. Apply

Click [**Apply**] to apply the settings to the printer.

To save the specified settings in a command file, select [**Save in Command File**] from the drop-down menu.



Clicking [**Apply**] applies all settings in all tabs to the printer. If [**Disable these settings**] check box is selected, the settings in that tab are not applied.

Menu Bar**File menu**

- **Apply Settings to the Printer**
Applies the settings to the printer.



If **[Disable these settings]** check box is selected, the settings in that tab are not saved.

- **Save Settings in Command File**
Saves the specified settings in a command file.
The file extension is ".bin".



- If **[Disable these settings]** check box is selected, the settings in that tab are not saved.
- The following information is not saved with the settings commands.
 - Node name
 - IP address, subnet mask and default gateway (when the IP address is set to **[STATIC]**)
- The saved communication settings commands are only intended to be used for applying settings to a printer. The settings cannot be applied by importing this command file.
- Saved command files contain authentication keys and passwords.
Take necessary measures to protect saved command files, such as by saving them in a location that cannot be accessed by other users.
- Do not send the command file to a printer whose model was not specified when the command file was exported.

- **Import**
 - **Import from the current computer wireless settings**
Imports the settings from the computer.



- Only personal security authentication settings (open system, public key authentication and WPA/WPA2-PSK) can be imported. Enterprise security authentication (such as LEAP and EAP-FAST) and WPA2-PSK (TKIP+AES) settings cannot be imported.
- If multiple wireless LANs are enabled for the computer being used, the first wireless settings (only personal settings) that are detected will be considered for the import data.
- Only settings (communication mode, SSID, authentication method, encryption mode and authentication key) from **[Wireless LAN]** tab - **[Wireless Settings]** pane can be imported.

- **Select a Profile to import**

Imports the exported file and applies the settings to a printer.

Click **[Browse]** to display a dialogue box for browsing for the file. Select the file to be imported. The settings in the selected file appear in the settings display / change area.



- All settings, such as wireless settings or TCP/IP settings, can be imported. However, node names cannot be imported.
- Only profiles that are compatible with the selected printer can be imported.
- If the imported profile's IP address is set to **[STATIC]**, change the IP address of the imported profile, if necessary, so that it does not duplicate the IP address of an existing printer on the network whose settings have been completed.

- **Export**
Saves the current settings in a file.



- If **[Disable these settings]** check box is selected, the settings in that tab are not saved.
- Exported files are not encrypted.

Tools menu

- **Option Settings**
 - **Automatically restart the printer after applying new settings**
If this check box is selected, the printer automatically restarts after communication settings are applied.
If this check box is cleared, printers must be manually restarted.



When configuring multiple printers, you can reduce the time required to change settings by clearing this check box. In this case, we recommend selecting this check box when configuring the first printer so that you can confirm that each setting is operating as intended.

- **Automatically detects the connected printer, and retrieves the current settings.**

If this check box is selected and a printer is connected to the computer, the printer is automatically detected and the printer's current settings are displayed in **[Current Status]** page.



If the model of the connected printer is different than that of the printer shown in **[Printer]** drop-down list, the settings available on all tabs will change to match the connected printer.

- **Change Node Name / Bluetooth Device Name**
Allows each node name to be changed.

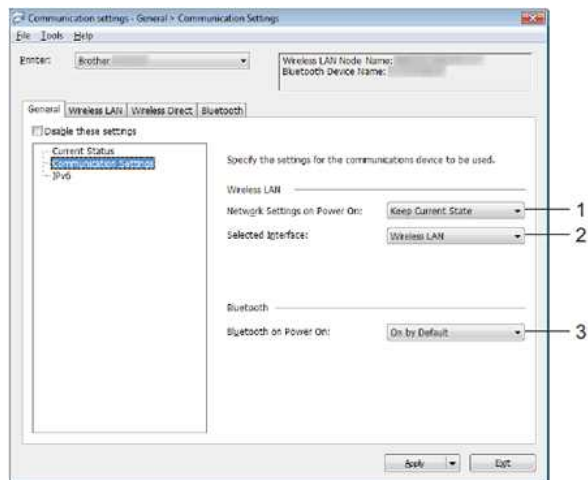
- **Reset to Default Communication Settings**
Returns the communication settings to their factory defaults.

Help menu

- **Display Help**
Displays the Help.
- **About**
Displays the version information.

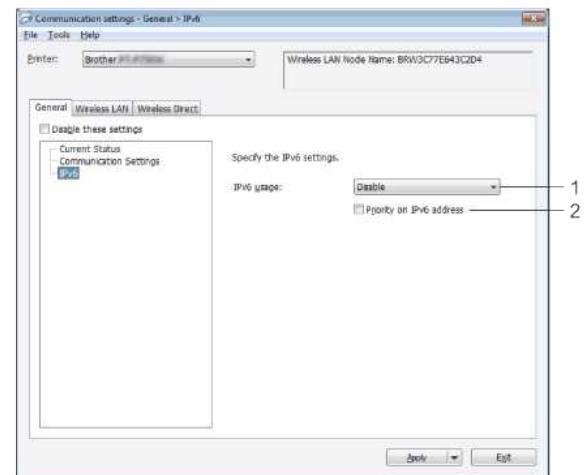
General Tab

Communication settings



1. **Network Settings on Power On**
Determines the conditions for connecting via Wi-Fi® when the printer is turned on. Select **[On by Default]**, **[Off by default]** or **[Keep Current State]**.
2. **Selected Interface**
Select **[Wireless LAN]** or **[Wireless Direct]**.
3. **Bluetooth on Power On**
Determines the conditions for connecting via Bluetooth® when the printer is turned on. Select **[On by default]**, **[Off by default]** or **[Keep Current State]**.

IPv6

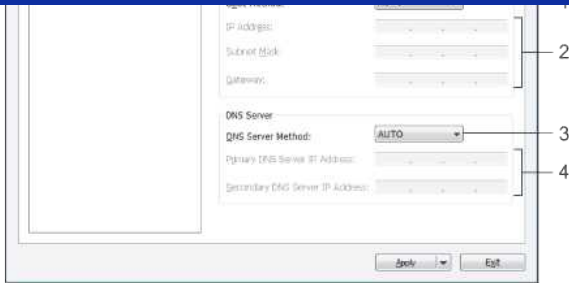


1. **IPv6 Usage**
Select **[Enable]** or **[Disable]**.
2. **Priority on IPv6 address**
Select to give priority to an IPv6 addresses.

Wireless LAN Tab

TCP/IP (Wireless)





1. Boot Method

Select [AUTO], [BOOTP], [DHCP], [RARP] or [STATIC].

2. IP Address / Subnet Mask / Gateway

Specify the various values.

You can only enter settings when the IP address is set to [STATIC].

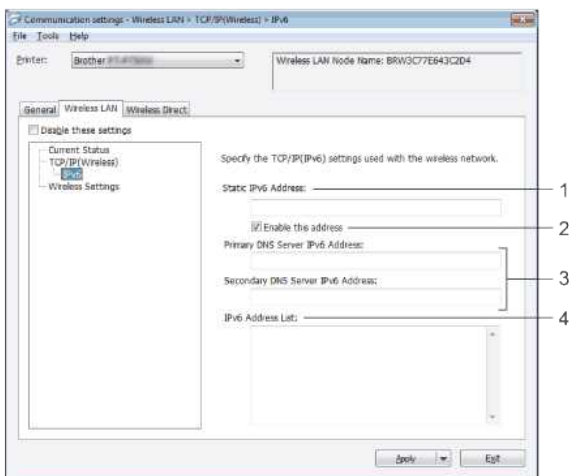
3. DNS Server Method

Select [AUTO] or [STATIC].

4. Primary DNS Server IP Address / Secondary DNS Server IP Address

You can only enter settings when the DNS server is set to [STATIC].

IPv6



1. Static IPv6 Address

Specify the value.

2. Enable this address

Select to make the specified static IPv6 address effective.

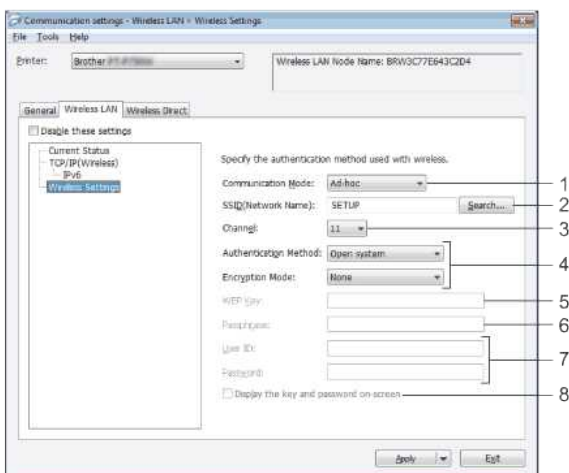
3. Primary DNS Server IPv6 Address / Secondary DNS Server IPv6 Address

Specify the values.

4. IPv6 Address List

Displays the list of IPv6 addresses.

Wireless Settings



1. Communication Mode

Select [Ad-hoc] or [Infrastructure].

2. SSID (Network Name)

Click [Search] button to display the SSID selections in a separate dialogue box.

3. Channel

Select from the displayed options.



This setting is valid only in Ad-hoc mode.

4. Authentication Method / Encryption Mode

The supported encryption modes for the various authentication methods are as shown in [Communication Modes and Authentication Methods / Encryption Modes](#).

5. WEP Key

You can only specify a setting when WEP is selected as the encryption mode.

6. Passphrase

You can only specify a setting when WPA/WPA2-PSK is selected as the authentication method.

7. User ID / Password

You can only specify settings when LEAP, EAP-FAST, PEAP, EAP-TTLS or EAP-TLS is selected as the authentication method. In addition, with EAP-TLS, it is not necessary to register a password, but a client certificate must be registered. To register a certificate, connect to the printer from a web browser, and then specify the certificate.

8. Display the key and password on-screen

If this check box is selected, keys and passwords will be displayed in plain text (non-encrypted text).

Communication Modes and Authentication Methods / Encryption Modes

- When [Communication Mode] is set to [Ad-hoc]

Authentication Method	Encryption Mode
Open System	None / WEP

- When [Communication Mode] is set to [Infrastructure]

Authentication Method	Encryption Mode
Open System	None / WEP
Shared Key	WEP
WPA/WPA2-PSK	TKIP+AES / AES
LEAP	CKIP
EAP-FAST/NONE	TKIP+AES / AES
EAP-FAST/MS-CHAPv2	TKIP+AES / AES
EAP-FAST/GTC	TKIP+AES / AES
PEAP/MS-CHAPv2	TKIP+AES / AES
PEAP/GTC	TKIP+AES / AES
EAP-TTLS/CHAP	TKIP+AES / AES
EAP-TTLS/MS-CHAP	TKIP+AES / AES
EAP-TTLS/MS-CHAPv2	TKIP+AES / AES
EAP-TTLS/PAP	TKIP+AES / AES
EAP-TLS	TKIP+AES / AES

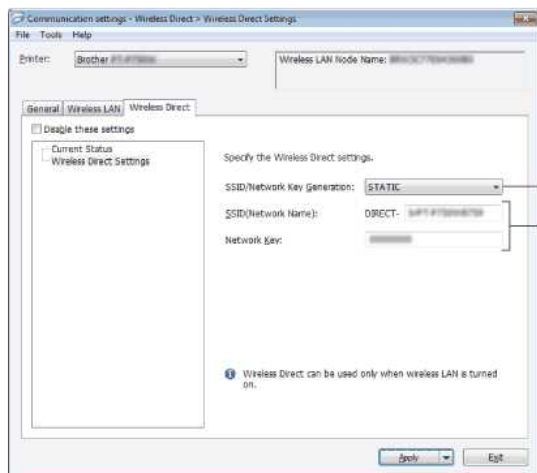


To perform higher level security settings:

When performing certificate verification with EAP-FAST, PEAP, EAP-TTLS or EAP-TLS authentication methods, the certificate cannot be specified from [Printer Setting Tool]. After the printer is configured to connect to the network, specify the certificate by accessing the printer from a web browser.

Wireless Direct Tab

Wireless Direct Settings



1. SSID / Network Key Generation

Select **[AUTO]** or **[STATIC]**.

2. SSID (Network Name) / Network Key

Enter the SSID (25 ASCII characters or less) and the network key (63 characters or less) to be used in the Wireless Direct mode.

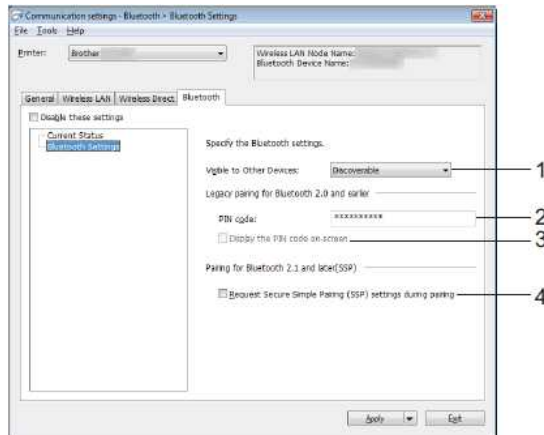
You can only specify a setting when **[STATIC]** is selected as **[SSID / Network Key Generation]**.



The factory default SSID and password are as follows:

SSID: "DIRECT-brRJ-3050[the last four digits of the serial number]" (for RJ-3050) or "DIRECT-brRJ-3150[the last four digits of the serial number]" (for RJ-3150).
(You can find the serial number label on the bottom of the printer.)

Password (Network key):
RJ-3050 / RJ-3150: 00000000

Bluetooth Tab**Bluetooth Settings****1. Visible to Other Devices**

Select whether the printer can be "discovered" by other Bluetooth devices.

Available settings: **[Discoverable]**, **[Not Discoverable]**

2. PIN code

Specify the PIN code that will be used when pairing with devices that are compliant with Bluetooth 2.0 or earlier.

3. Display the PIN code on-screen

If this check box is selected, PIN codes will be displayed in computer windows.

4. Request Secure Simple Pairing (SSP) settings during pairing

If this check box is selected, pairing can be performed using the printer buttons for devices that are compliant with Bluetooth 2.1 or later.

Applying Setting Changes to Multiple Printers

- After applying settings to the first printer, disconnect the printer from the computer, and then connect the second printer to the computer.
- Select the newly connected printer from **[Printer]** drop-down box.



If **[Automatically detects the connected printer, and retrieves the current settings]** check box in **[Option Settings]** dialogue box is selected, the printer connected with the USB cable is automatically selected.
For details, see [File menu](#).

- Click **[Apply]** button.

The same settings that were applied to the first printer are applied to the second printer.



If **[Automatically restart the printer after applying new settings]** check box is cleared, the printers will not be restarted after the settings are changed, reducing the time required to configure the printers. However, we recommend selecting **[Automatically restart the printer after applying new settings]** check box when configuring the first printer so that you can confirm that a connection with the access point can be correctly established with the settings. For details, see [File menu](#).

- Repeat steps 1 - 3 for all the printers whose settings you wish to change.



- If the IP address is set to **[STATIC]**, the printer's IP address will also be changed to the same address as the first printer.
Change the IP address if necessary.
- To save the current settings in a file, click **[File] - [Export]**.
The same settings can be applied to another printer by clicking **[File] - [Import]**, then selecting the exported settings file. (See [File menu](#).)

**For Apple devices**

The following devices may not support Ad-hoc mode:

- (iOS 14 or later) iPhone 12 series, iPhone 11 series, and iPhone SE 2nd generation
- (iPadOS 14 or later) iPad Pro 5th generation and iPad Air 4th generation
- iPad and iPad mini released after 2021

To connect your printer to these devices, we recommend using Wireless Direct.

For computers

Not all computers and operating systems support Ad-hoc mode.

© 2001-2022 Brother Industries, Ltd. All Rights Reserved.

Any trade names and product names of companies appearing on Brother products, related documents and any other materials are all trademarks or registered trademarks of those respective companies.

How do I switch to and use the mass storage mode?

The mass storage feature allows you to execute commands and perform JPEG printing by sending data from a computer to the printer via USB. Files that have been copied to the printer's mass storage area are processed when you press the **Bluetooth** button (for RJ-3050) or the **OK** button (for RJ-3150).

This feature is useful in the following situations:

- When you want to apply settings that are stored in a command file (".bin" format) or templates that are stored in ".blf" format files that were distributed by the administrator without using a customised tool
- When you want to execute commands or perform JPEG printing without installing the printer driver
- When you want to use a device with an OS (including non-Windows operating systems) that has a USB host feature to print and transmit data

1. Confirm that the printer is turned off.
2. While pressing the **Bluetooth** button (for RJ-3050) or the **OK** button (for RJ-3150), press and hold the **Power** button.
The printer starts up in mass storage mode. For RJ-3050, the POWER and STATUS indicators light in green.
For RJ-3150, the message "**Mass Storage**" is displayed on the LCD display.
3. Connect the computer to the printer via USB.
The printer's mass storage area is displayed on the computer screen.

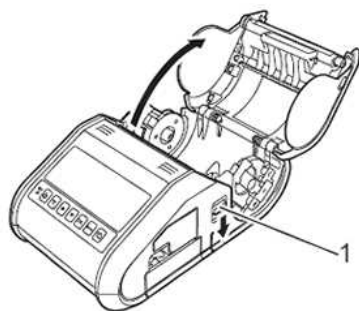


If the mass storage area is not displayed automatically, refer to the operating instructions for the computer's operating system for information about displaying the mass storage area.

4. Drag and drop the file you want to copy to the mass storage area.
5. Press the **Bluetooth** button (for RJ-3050) or the **OK** button (for RJ-3150).
The command file is executed.
For RJ-3050, the Bluetooth indicator lights in blue. For RJ-3150, the message "**Receiving**" is displayed on the LCD display.
6. After the file has been executed, the Bluetooth indicator turns off (for RJ-3050) or the message "**Mass Storage**" is displayed again on the LCD display (for RJ-3150).
7. To turn mass storage mode off, turn the printer off.
The printer will start up in its normal operating mode.

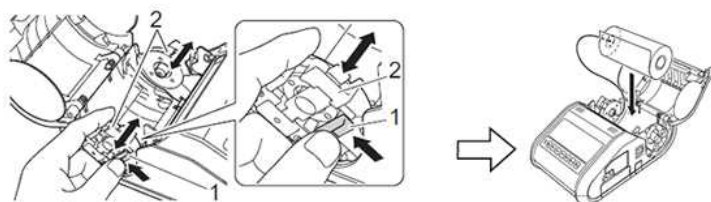
How do I install/change the RD roll?

1. Push the cover open lever to open the RD Roll compartment cover.



1 Cover open lever

2. Open the roll guides by lifting up the roll guide adjustment lever (1) and pulling the roll guide outwards. Insert an RD Roll into the RD Roll compartment with the roll feeding from the bottom as shown.

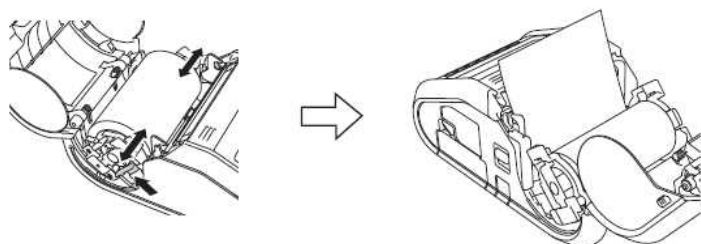


1 Roll guide adjustment lever
2 Roll guide



- Make sure that the roll guide is properly positioned to prevent the RD Roll from moving sideways.
- The thermal sensitive side must be on the outside of the roll and installed as shown to print properly.

3. While lifting up the roll guide adjustment lever (1), push in both roll guides (2) to the roll width. Make sure that the RD Roll is positioned straight in the RD Roll compartment.



4. Close the RD Roll compartment by pressing down on the centre of the cover until it latches.



- When using die-cut label (RJ-3150 only), press the Feed button after inserting the RD Roll. The printer will position the label to the correct starting position.
- Use genuine Brother media.

Movie: [How to set the RD roll.](#)



How to use the buttons:	
	Start the video
	Skip the video
	Stop the video
	Restart the video

*The video clip is being streamed from YouTube.

© 2001-2021 Brother Industries, Ltd. All Rights Reserved.

Any trade names and product names of companies appearing on Brother products, related documents and any other materials are all trademarks or registered trademarks of those respective companies.

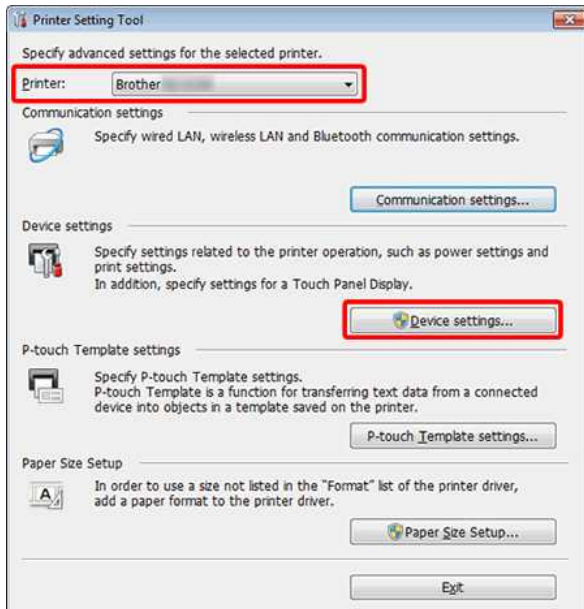


Will my printer automatically turn itself off?

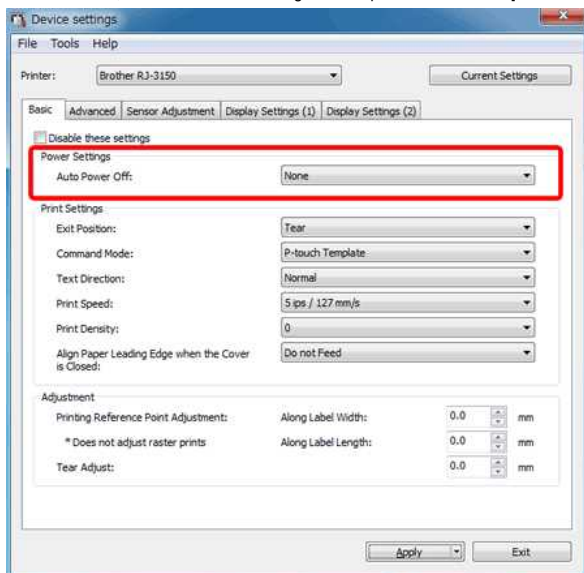
Yes, if the **Auto Power Off** feature is enabled in the Device settings, the printer will turn itself off automatically after the selected period of inactivity.

Adjust the Auto Power Off setting as follows:

1. Connect the printer to be configured to the computer.
2. Start the Printer Setting Tool.
Refer to "[Using the Printer Setting Tool \(for Windows\)](#)".
3. The Printer Setting Tool window is displayed.
Select the printer and click the **[Device settings...]** button.



4. The Device settings window is displayed.
In the Basic tab, select the desired setting from the pull-down menu for **[Auto Power Off]**.



Available settings: **[None]**, [1/2/3/4/5/6/7/8/9/10/20/30/40/50/60 minutes]

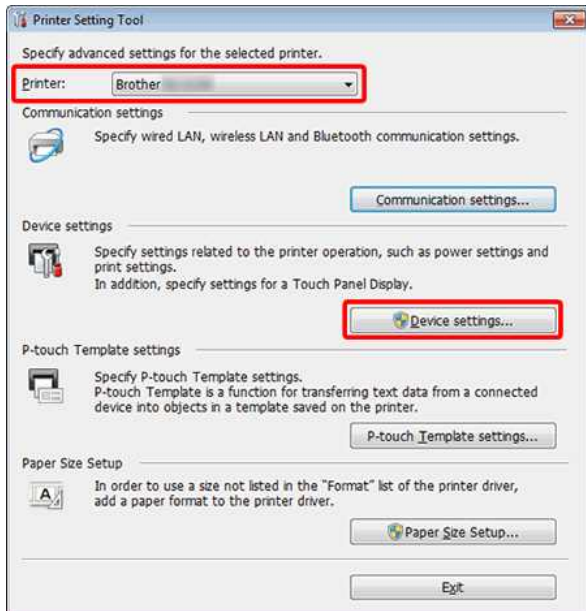
5. Click **[Apply]** to save the settings to the printer.

The print quality is poor, and the image is too light or dark.

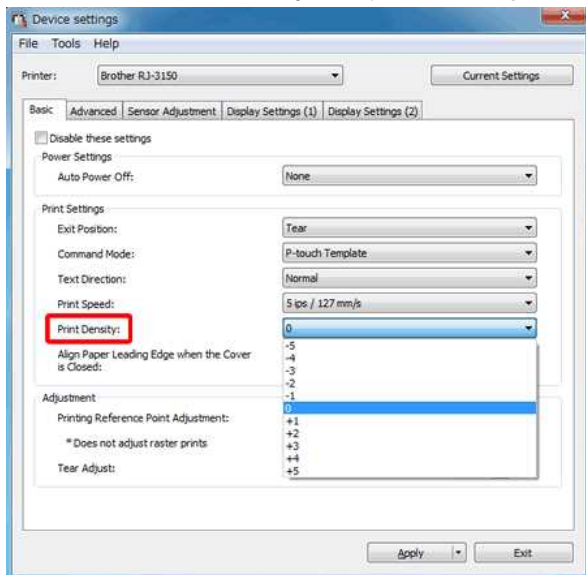
You can make prints lighter or darker by adjusting the print density setting in the printer driver's dialogue box or the Device settings. When using the battery, changing the print density setting may result in slight changes in printing speed and the number of pages that can be printed on a single charge.

Adjust the print density setting as follows:

1. Connect the printer to be configured to the computer.
2. Start the Printer Setting Tool.
Refer to "Using the Printer Setting Tool (for Windows)".
3. The Printer Setting Tool screen is displayed.
Select the printer and click the **[Device settings...]** button.



4. The Device settings window is displayed.
In the Basic tab, select the desired setting from the pull-down menu for **[Print Density]**.



Available settings: [-5] is the lightest, and [+5] is the darkest.

5. Click **[Apply]** to save the setting to the printer.

How do I set the Label Peeler?

If the label peeler is used, printed labels can be automatically peeled off their backing paper before they are fed out of the media exit. This is useful when printing large quantities of labels and applying them at an inconsistent pace, because the peeler sensor prohibits printing the next label until it is removed from the printer.

To set the Label Peeler, please follow the steps or click on the image to play the video instructions below:

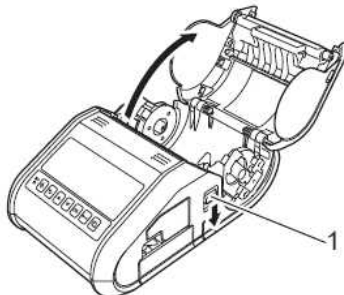
Movie: How to set the Label Peeler.



How to use the buttons:	
	Start the video
	Skip the video
	Stop the video
	Restart the video

*The video clip is being streamed from YouTube.

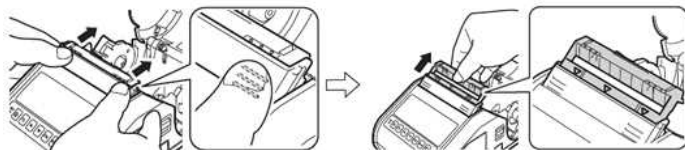
1. Push the cover open lever to open the RD Roll compartment cover.



1 Cover open lever

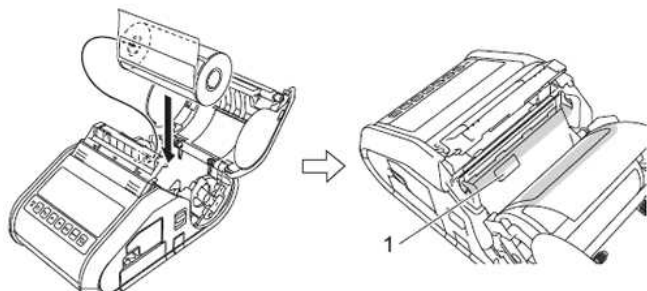
2. Push both sides of the label peeler towards the rear of the printer. The peeler will move up and away from the printer.

Then, fully pull out the peeler away from the printer until the marks on the peeler are visible as shown.

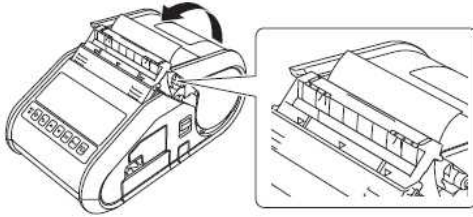


The paper can be pulled out in two stages. Be sure to pull out the peeler completely.

3. Peel off the first label of the RD Roll. Then, insert the RD Roll so that the top edge of the second label is at the same height as the top edge of the media sensor plate. Position the label where the media sensor can detect it.



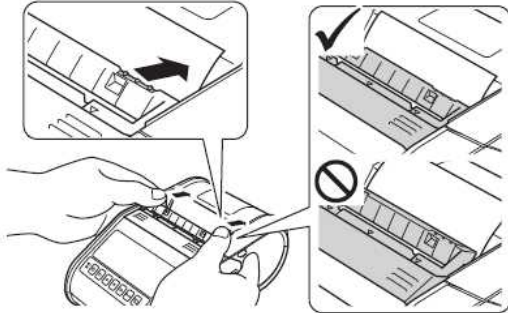
4. Close the RD Roll compartment cover. Make sure that the label peeler is on top of the cover.



Make sure that the labels are not pinched by the peeler rollers. The backing paper of the labels may not be peeled off.

5. In order to remove any slack in the roll, lightly pull on the paper fed out of the paper outlet until no more can be pulled out.

6. Push both sides of the (● ● ●) label peeler until it clicks into place.



- Before using the label peeler, specify the following settings.
 - Device settings of the "Printer Setting Tool": Specify [Peeler] for [Exit Position] on the [Basic] tab.
 - Printer driver: Select the [Use Peeler Function] check box on the [Basic] tab.
- When not using the label peeler, specify the following settings.
 - Device settings of the "Printer Setting Tool": Specify [Tear] for [Exit Position] on the [Basic] tab.
 - Printer driver: Clear the [Use Peeler Function] check box on the [Basic] tab.

To retract the Label Peeler and remove the RD roll, please click on the image to play the video instructions below:

Movie: How to retract the Label Peeler and remove the RD roll.



How to use the buttons:	
	Start the video
	Skip the video
	Stop the video
	Restart the video

*The video clip is being streamed from YouTube.



P-touch Editor sometimes crashes. (For Office 2013 or 2016 users)

If you update Office to the 2013 or 2016 version with the "Add-in" setting on, P-touch Editor sometimes crashes.
Please update to the latest version of P-touch Editor.

© 2001-2022 Brother Industries, Ltd. All Rights Reserved.

Any trade names and product names of companies appearing on Brother products, related documents and any other materials are all trademarks or registered trademarks of those respective companies.

How do I disable broadcasting the printer to AirPrint-compatible devices?

You can disable AirPrint by using a Web browser.

1. Type "http://xxxxx" into your web browser's address bar. (xxxxx is the IP address of your printer.) Refer to "[Using Web Based Management](#)".
2. The following screen appears. Type the password into the **Login** box and then click the right arrow button to log in.

The screenshot shows the Brother printer's web-based management interface. The top navigation bar includes 'General' and 'Brother Solutions Center'. The main content area is titled 'Status' and displays various printer settings. A 'Login' field with a right-pointing arrow button is highlighted with a red box. The status information includes: Device Status (READY), Automatic Refresh (Off), Emulation (P-touch Template), Media Status (Empty), Media Type (102mm x 152mm / 4" x 6"), Web Language (English), and Device Location (Contact and Location).

3. Open **[Network] - [Protocol]** and uncheck **AirPrint**, and then click **[Submit]**. Your printer's AirPrint function will be disabled.

The screenshot shows the Brother printer's web-based management interface, specifically the 'Network > Protocol' page. The 'AirPrint' checkbox is highlighted with a red box. The page lists various network protocols with their respective settings and links to advanced settings. The 'Submit' button at the bottom right is also highlighted with a red box. The protocols listed include: Web Based Management (Web Server), SNMP, LPD, Raw Port, IPP, AirPrint, Web Services, Proxy, FTP, TFTP, mDNS, LLNMR, and SNTP.





When I try to print multiple pages via Bluetooth from a Windows 8 computer, it takes a long time for the printing to start and finish.

It may take longer for the printing to start and finish if the computer enters sleep mode when sending print data via Bluetooth. To avoid this, disable sleep mode or increase the sleep mode timeout in the Windows control panel.

1. Click **Charm Bar > Settings > Control Panel**.
2. In the **Control Panel** window, click **Hardware and Sound > Power Options**.
3. Click **Change Plan Settings** next to the currently selected plan.

The **Edit Plan Settings** window appears.

- a. To disable the sleep mode:
Select **Never** in the **Put the computer to sleep** drop-down list.
- b. To increase the sleep mode timeout:
Select a time setting higher than the current setting in the **Put the computer to sleep** drop-down list.



The setting may vary between operating environments and the size of the print data.
If the problem persists, use a higher setting.

4. Click **Save Changes**.





I cannot save a file downloaded from the Brother support website (For Windows)

The download process varies depending on your browser. Follow the steps below to download the file.

1. Download a file.
([Google Chrome™](#))
([Microsoft Edge](#))

Google Chrome™

- a. Downloads will start automatically.



- b. After the download has completed, click [x].



Microsoft Edge

- a. Downloads will start automatically.



- b. After the download has completed, click [x].



When you get a warning message such as "[file name] was blocked because this type of file can harm your device.", we recommend using other browsers (Google Chrome, etc.), or follow the steps below.

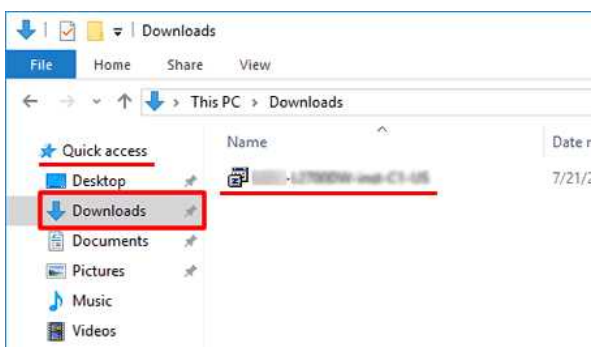
1. Move the cursor onto the warning message and click [...], and then click [Keep].
2. Click the folder icon to confirm the downloaded file is stored.

2. The downloaded files will be saved in the [Downloads] folder by default.

- a. Click [File Explorer].



- b. Open the [Downloads] folder from [Quick access].



- c. Run the downloaded file and follow the installation procedure.

© 2001-2022 Brother Industries, Ltd. All Rights Reserved.

Any trade names and product names of companies appearing on Brother products, related documents and any other materials are all trademarks or registered trademarks of those respective companies.



I cannot print in Windows 10 using Bluetooth even though my machine and computer are paired.

First, refer to "[How to identify your Operating System \(OS\) for Windows or Macintosh.](#)" to check the operating system (OS) version you are using.

To resolve this issue:

For Windows® 10 Version 1607 users:

Run Windows Update to apply the KB3176929 update for Windows 10.

For Windows® 10 Version 1511 users:

Run Windows Update to apply the KB3140743 update for Windows 10.



We also recommend to keep your machine in the best condition by updating the machine firmware.

© 2001-2021 Brother Industries, Ltd. All Rights Reserved.

Any trade names and product names of companies appearing on Brother products, related documents and any other materials are all trademarks or registered trademarks of those respective companies.









Using the Printer Setting Tool (for Windows)

Using the Printer Setting Tool, you can specify the printer's communication settings, device settings, P-touch Template settings and Paper Size Setup from a computer.



Before Using the Printer Setting Tool:

- Make sure that the AC adapter is connected to an AC power outlet or that the rechargeable battery is fully charged.
- Make sure that the printer driver has been installed and is functional.
- With this tool, settings cannot be specified over a wireless LAN or Bluetooth® connection.

1. Connect the printer you want to configure to the computer.
2. Start the Printer Setting Tool.

For Windows 11 / Windows 10 / Windows Server 2019 / Windows Server 2016

Click **[Start]** - **([All apps])** - **[Brother]** - **[Printer Setting Tool]**.

For Windows 8.1 / Windows 8 / Windows Server 2012 / Windows Server 2012 R2

On the **[Apps]** screen, click **[Printer Setting Tool]**.

For Windows 7 / Windows Vista / Windows Server 2008 / Windows Server 2008 R2

From the Start menu, click **[All Programs]** - **[Brother]** - **[Label & Mobile Printer]** - **[Printer Setting Tool]**.

The main window appears.

3. Check that the printer you want to configure appears next to **[Printer]**.
If a different printer appears, select the printer you want from the drop-down list.
4. Select the setting you want to change, and then specify or change the settings in the dialogue box.
For more information on the settings dialogue boxes, see the FAQ: "[Using the Communication Settings \(for Windows\)](#)", "[Using the Device Settings \(for Windows\)](#)", "[P-touch Template Settings](#)" or "[Paper Size Setup](#)".
5. Click **[Apply]** - **[Exit]** in the settings dialogue box to apply the settings to the printer.
6. Click **[Exit]** in the main window to finish specifying settings.



- Use the "Printer Setting Tool" to configure the printer only when the printer is in standby. The printer may malfunction if you try to configure it while it is handling a job.
- If the Printer Setting Tool is not installed, download and install the Printer Setting Tool from the [\[Downloads\]](#) section.

Using P-touch Template Settings

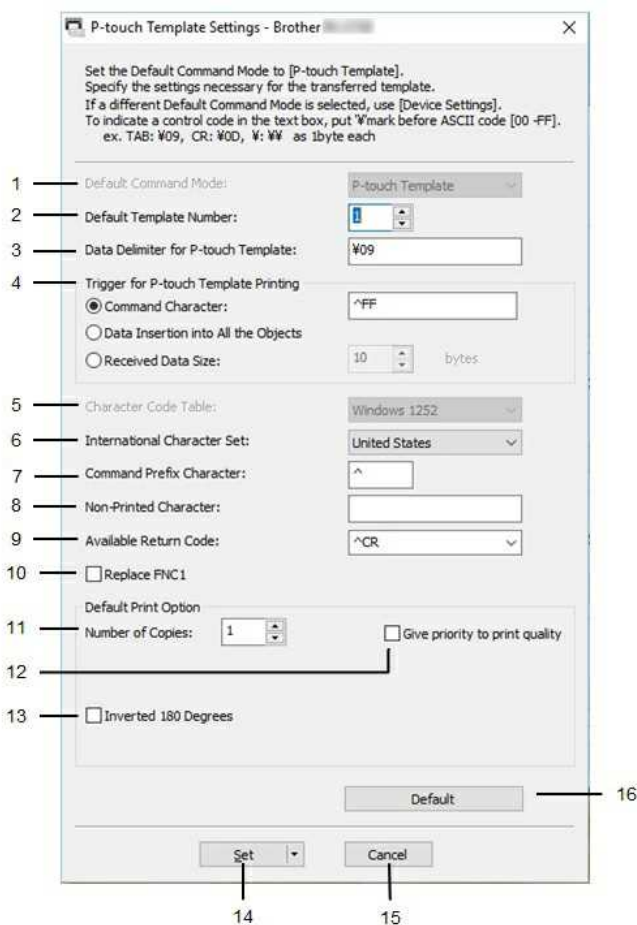
P-touch Template mode provides functions for inserting data from a device (such as a barcode reader connected to the printer) into text and barcode objects in layouts saved on the printer, useful for printing templates and barcodes.

 For more information on P-touch Template, download the **P-touch Template Manual / Command Reference** (English only) from the [\[Manuals\]](#) page.

To use the P-touch Template Settings, please follow the steps below:

1. Open the Printer Setting Tool.
Refer to the FAQ: "[Using the Printer Setting Tool \(for Windows\)](#)"
2. Select P-touch Template Settings.
The P-touch Template Settings dialogue box appears.
3. Specify or change the settings.
See below for detailed information.

P-touch Template Settings Dialogue Box



1. Default Command Mode

In order to use P-touch Templates, select the **[P-touch Template]** mode.
Available settings: **[P-touch Template]**, **[ESC/P]**, **[Raster]**

2. Default Template Number

Specify the template number selected as the default when the printer is turned on.
However, if any template has been set to not be transferred to the printer, the number of that template cannot be specified.

3. Data Delimiter for P-touch Template

A delimiter is the symbol used to indicate when to move to the next object in the data that is being sent.
Between 1 and 20 characters can be specified.

4. Trigger for P-touch Template Printing

Select one of the following three options for the print start trigger.
[Command Character]: Printing starts when the command character specified here is received.
[Data Insertion into All the Objects]: Printing starts when the delimiter for the last object is received.
[Received Data Size]: Printing starts when the number of characters specified here is received. However, delimiters are not counted in the number of characters.

5. Character Code Table

Select one of the following three character code sets.
Available settings: **[Windows 1252]**, **[Windows 1250 Eastern Europe]**, **[Brother standard]**

6. International Character Set

Lists character sets for specific countries.

Available settings: [United States], [France], [Germany], [Britain], [Denmark], [Sweden], [Italy], [Spain], [Japan], [Norway], [Denmark II], [Spain II], [Latin America], [Korea], [Legal]

The following 12 codes are switched depending on the country selected from the list above: 23h 24h 40h 5Bh 5Ch 5Dh 5Eh 60h 7Bh 7Ch 7Dh 7Eh

For switched characters, download the **P-touch Template Manual / Command Reference** (English only) from the [\[Manuals\]](#) page.

7. Command Prefix Character

Change the prefix character code. Set a single character code.

The prefix character is a code to identify commands used in P-touch Template mode.

8. Non-Printed Character

Characters specified here are not printed when data is received. Specify 1 to 20 characters.

9. Available Return Code

The line feed code is used when feeding data to indicate that the following data should be moved to the next line in a text object. One of the following four line feed codes can be selected, or 1 to 20 characters can be specified as the line feed code.

Available settings: [^CR], [0D10A], [0A], [0D]

10. Replace FNC1

Select whether or not GS codes, which are included in barcode protocols such as GS1-128 (UCC/EAN-128), are replaced with FNC1 codes.

If this check box is selected, a received GS code is replaced with the FNC1 code. If this check box is cleared, a received GS code is outputted as is.

11. Number of Copies

Sets the number of copies. A number between 1 and 99 can be specified.

12. Give priority to print quality

Select the print quality setting. If this check box is selected, priority is given to the print quality.

If this check box is cleared, priority is given to the print speed.

13. Inverted 180 Degrees

If this check box is selected, the data will be printed after it has been rotated 180 degrees.

14. Set

After the [Set] button is clicked, the settings are saved as an .ini file when the dialogue box is closed.

To save the specified settings in a command file, select [Save in Command File] from the drop-down menu. The saved command file can be used with the mass storage feature to apply the settings to a printer.

15. Cancel

Cancel the settings and closes the dialogue box. The settings will remain unchanged.

16. Default

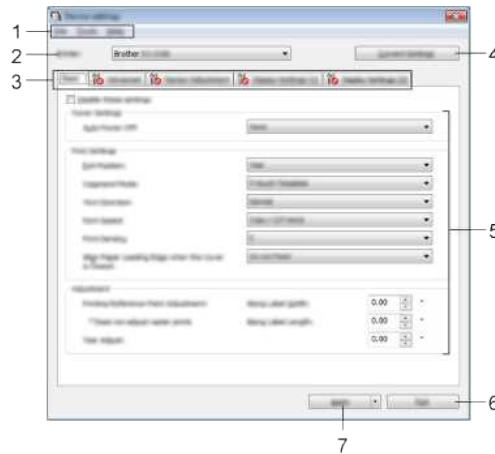
Click this button to return the settings to their factory defaults.

Using the Device Settings (for Windows)

To use the Device Settings, please follow the steps below:

1. Open the Printer Setting Tool.
Refer to "Using the Printer Setting Tool".
2. Select **Device Settings**.
The **Device Settings** window appears.
3. Specify or change the settings.
See below for detailed information.
[Settings Dialog Box](#)
[Menu Bar](#)
[Basic Tab](#)
[Advanced Tab](#)
[Sensor Adjustment Tab](#)
[Display Settings \(1\) Tab \(RJ-3150 only\)](#)
[Display Settings \(2\) Tab \(RJ-3150 only\)](#)

Settings Dialog Box



1. Menu Bar

Select a command contained in each menu from the list.


2. Printer

Specifies the printer whose device settings are to be configured.
If only one printer is connected, it is unnecessary to make a selection because only that printer will appear.


3. Settings Tabs

Click the tab containing the settings to be specified or changed.



- If  appears in the tab, the settings in that tab cannot be specified or changed. In addition, the settings in the tab will not be applied to the printer even if [Apply] is clicked. The settings in the tab will also not be saved or exported when the [Save in Command File] or [Export] command is executed.
- [Display Settings (1)] and [Display Settings (2)] appear only if RJ-3150 is selected for [Printer]. Specify the settings when you use RJ-3150.

4. Current Settings

Click this button to retrieve the settings from the currently connected printer and display them in the dialog box. Settings will also be retrieved for parameters on tabs with .



When the [Current Date/Time] button is clicked, the current time is retrieved from the computer and displayed for [Set Clock] in the [Display Settings (2)] tab.

5. Parameters

Displays the current settings. Change the settings as necessary using the drop-down menus, direct entry or other appropriate methods.

6. Exit

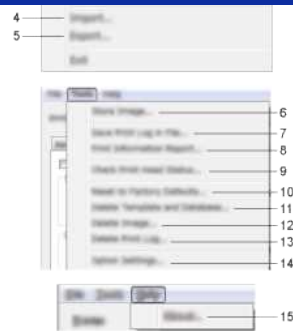
Exits [Device Settings], and returns to the main window of the "Printer Setting Tool".

7. Apply

To confirm the current settings, select [Check Setting...] from the drop-down menu.
Click [Apply] to apply the settings to the printer.
To save the specified settings in a command file, select [Save in Command File] from the drop-down menu.
The saved command file can be used with the mass storage feature to apply the settings to a printer.

Menu Bar





1. Apply Settings to the Printer

Applies the settings to the printer.

Performs the same operation as when the **[Apply]** button is clicked.

2. Check setting...

Displays the current settings.

3. Save Settings in Command File

Saves the specified settings in a command file.

Performs the same operation as when **[Save in Command File]** is selected from the **[Apply]** drop-down list.

4. Import

Imports the exported file and applies the settings to this tool.

5. Export

Saves the current settings in a file.

6. Store Image (RJ-3150 only)

If RJ-3050 was selected for **[Printer]**, this item is unavailable. In the **[Display Settings (1)]** tab, the image that is displayed for the background on the LCD and the opening image that is displayed on the LCD when the printer is turned on can be registered.

7. Save Print Log in File

Saves the print log in a file in the CSV format.

The following information is included in the print log:

- Printing time/date (RJ-3150 only. The completion time of each print job is recorded.)
- Key number*
- Template name*
- Name of database linked to template*
- Number of records in database*
- Number of copies printed
- Error information

* Only when printing templates saved on the printer



The print log cannot be saved in a file if **[Save Printer Print Log]** in the **[Advanced]** tab has been set to **[Disable]** and the setting has already been applied to the printer.

8. Print Information Report

The content selected for the printer setup information in the **[Advanced]** tab will be printed.



The printer setup information can also be printed by pressing and holding the  (Feed) button.

9. Check Print Head Status

Checks the print head for broken lines.

10. Reset to Factory Defaults

Returns all printer settings, including the communication settings, to their factory defaults.

However, templates, databases and images stored in the printer and the print log are not deleted.

11. Delete Template and Database

Deletes the templates and databases stored in the printer.

12. Delete Image (RJ-3150 only)

If RJ-3050 was selected for **[Printer]**, this item is unavailable. Deletes all images that were registered using the Device settings.

13. Delete Print Log

Deletes the print log stored in the printer.

14. Option Settings

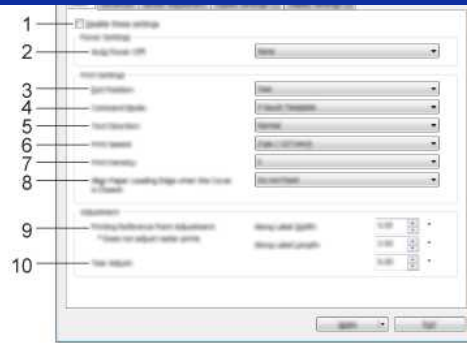
If the **[Do not display an error message if the current settings cannot be retrieved at startup]** check box is selected, a message will not be displayed next time.

15. About


Displays the version information.


Basic Tab





1. Disable these settings

When this check box is selected,  appears in the tab, and the settings can no longer be specified or changed.

The settings in a tab where  appears will not be applied to the printer even if **[Apply]** is clicked. In addition, the settings in the tab will not be saved or exported when the **[Save in Command File]** or **[Export]** command is executed.

To apply the settings to the printer or save or export them, be sure to clear the check box.

2. Auto Power Off

Specify the amount of time that passes before the printer turns off automatically.

Available settings: **[None]**, 1/2/3/4/5/6/7/8/9/10/20/30/40/50/60 minutes

3. Exit Position (RJ-3150 only)

If RJ-3050 was selected for **[Printer]**, this item is unavailable. Select the media output location.

Available settings: **[Tear]**, **[Peeler]**

4. Command Mode

Select the printer's command format.

Available settings: **[Raster]**, **[ESC/P]**, **[P-touch Template]**, **[CPCL emulation]**, **[CPCL Line Print emulation]**

5. Text Direction

Select the printing orientation.

Available settings: **[Normal]**, **[Inverted 180 Degrees]**

This setting is applied only if the printer driver is not used. If the printer driver is used, the setting specified in the printer driver will be applied.

6. Print Speed

Select the printer's printing speed.

Available settings: **[2 ips / 50.8 mm/s]**, **[3 ips / 76.2 mm/s]**, **[4 ips / 101.6 mm/s]**, **[5 ips / 127 mm/s]**

7. Print Density

Adjust the printer's printing density.

Available settings: -5--+5

8. Align Paper Leading Edge when the Cover is Closed

Select whether or not the paper is automatically fed when the cover is closed.

Available settings: **[Feed]**, **[Do not Feed]**

9. Printing Reference Point Adjustment

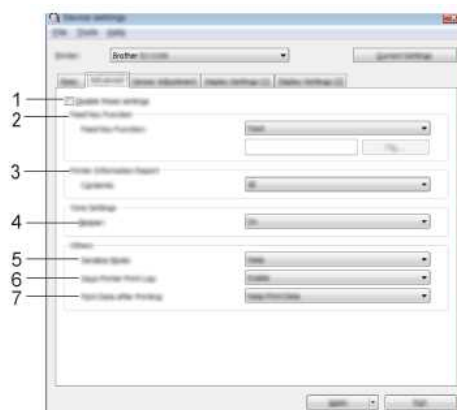
Adjust the position of the reference point (point of origin for printing). This corrects printing misalignments resulting from differences in printer models or from the fixed margins of some applications. The reference point cannot be adjusted for raster printing.

10. Tear Adjust


Adjust the tear bar tear off position for paper media.


Available settings: -0.39" to 0.39" (-10.0 mm to 10.0 mm)

Advanced Tab




1. Disable these settings

When this check box is selected,  appears in the tab, and the settings can no longer be specified or changed.

The settings in a tab where  appears will not be applied to the printer even if **[Apply]** is clicked. In addition, the settings in the tab will not be saved or exported when the **[Save in Command File]** or **[Export]** command is executed.

To apply the settings to the printer or save or export them, be sure to clear the check box.

2. Feed Key Function

Select the operation that is performed when the  (Feed) button is pressed.
 If **[Program Settings]** is selected, click the **[File]** button and select the command file.
 Available settings: **[Feed]**, **[Program Settings]**

3. Printer Information Report

Select which sections are printed when printing the printer setup information.
 Available settings: **[All]**, **[Usage Log]**, **[Printer Settings]**, **[Printer Transfer Data]**

4. Beeper

Select whether the printer beeps when an operation panel button is pressed.
 Available settings: **[On]**, **[Off]**

5. Serialize Mode

Select whether or not to serialise from the last number printed.
 Available settings: **[Cont From Last]**, **[From Starting#]**

6. Save Printer Print Log

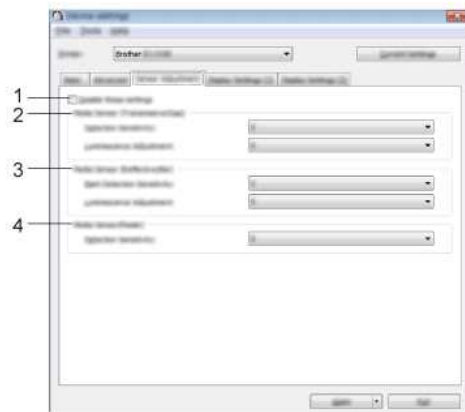
Select whether or not to save the printer's print log. If **[Disable]** is selected, **[Tools]** - **[Save Print Log in File]** cannot be performed.
 Available settings: **[Enable]**, **[Disable]**

7. Print Data after Printing



Select whether or not print data is erased automatically after it is printed.
 Available settings: **[Erase All Print Data]**, **[Keep Print Data]**

Sensor Adjustment Tab

If RD Rolls are being used, it is unnecessary to adjust the sensors.



1. Disable these settings

When this check box is selected,  appears in the tab, and the settings can no longer be specified or changed.
 The settings in a tab where  appears will not be applied to the printer even if **[Apply]** is clicked. In addition, the settings in the tab will not be saved or exported when the **[Save in Command File]** or **[Export]** command is executed.
 To apply the settings to the printer or save or export them, be sure to clear the check box.

2. Media Sensor (Transmissive/Gap) (RJ-3150 only)

If RJ-3050 was selected for **[Printer]**, this item is unavailable. The following transmissive/gap sensor parameters can be adjusted.
[Detection Sensitivity]
 Adjust the precision of the sensor that detects the gaps (spacing) for die-cut labels
 Available settings: -2~+2
[Luminescence Adjustment]
 Adjust the amount of light emitted by the transmissive/gap sensor.
 Available settings: -2~+2

3. Media Sensor (Reflective/Bar)

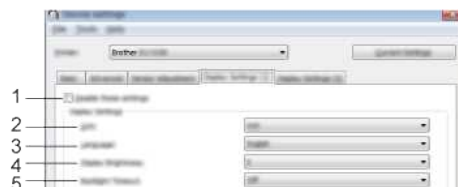
The following reflective/black mark sensor parameters can be adjusted.
[Mark Detection Sensitivity]
 Adjust the precision of the sensor that detects the black marks.
 Available settings: -2~+2
[Luminescence Adjustment]
 Adjust the amount of light emitted by the reflective/black mark sensor.
 Available settings: -2~+2

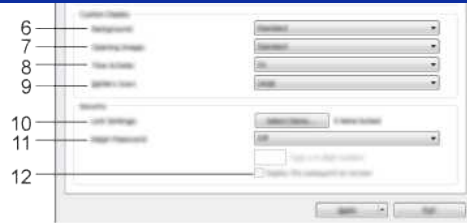
4. Media Sensor (Peeler) (RJ-3150 only)

If RJ-3050 was selected for **[Printer]**, this item is unavailable. Specify the settings when the label peeler is used.
 Adjust the precision of the sensor that detects whether the label has been peeled.
 Available settings: -2~+2

Display Settings (1) Tab (RJ-3150 only)

This appears only if RJ-3150 is selected for **[Printer]**.





1. Disable these settings

When this check box is selected, appears in the tab, and the settings can no longer be specified or changed.

The settings in a tab where appears will not be applied to the printer even if [Apply] is clicked. In addition, the settings in the tab will not be saved or exported when the [Save in Command File] or [Export] command is executed.

To apply the settings to the printer or save or export them, be sure to clear the check box.

2. Unit

Select the measurement units for displayed settings.

Available settings: [mm], [inch]

3. Language

Select the language of the LCD.

Available settings: [English], [Español], [Français], [Português], [Deutsch], [Nederlands], [Italiano], [Dansk], [Svenska], [Norsk], [Suomi], [日本語]

The possible display languages may differ depending on the printer model being used. If the selected language cannot be used for the LCD, the display language will not be changed.
Make sure that the LCD can display the selected language.

4. Display Brightness

Select the brightness of the LCD.

Available settings: -2~+2

5. Backlight Timeout

Specify the amount of time of inactivity that passes before the backlight of the LCD turns off automatically.

Available settings: [Off], [5s], [10s], [20s], [30s], [60s]

6. Background

Select the image that is displayed for the background on the LCD.

Available settings: [Standard], [Custom1], [Custom2], [Custom3]

If you select Custom 1–3, register an image beforehand.

7. Opening Image

Select the opening image that is displayed on the LCD when it is turned on.

Available settings: [Off], [Standard], [Custom1], [Custom2], [Custom3]

If you select Custom 1–3, register an image beforehand

8. Time & Date

Select whether the date and time are displayed on the LCD.

Available settings: [On], [Off]

9. Battery Icon

Select the size of the battery icon that is displayed on the LCD.

Available settings: [Large], [Small]

10. Lock Settings

Select the check boxes for the settings that you do not want to be changed using the LCD.

If the [Lock Settings] are set, a lock icon will be displayed for parameters that cannot be selected.

Available settings: [Printer Settings], [Template Settings], [Clock Settings], [Auto Power Off], [Media Selection], [Media List Clear], [Custom Display], [WLAN (On/OFF)], [WPS], [Bluetooth (On/OFF)]

11. Admin Password

Select whether a password is required to enter the Administration menu using the printer.

Available settings: [On], [Off]

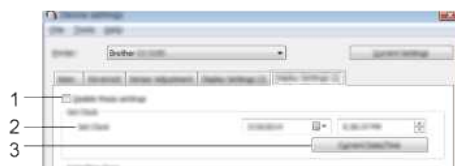
If you select [On], specify the 4-digit password.

12. Display the password on-screen

If this check box is selected, the password will be displayed in the computer window.


Display Settings (2) Tab (RJ-3150 only)


This appears only if RJ-3150 is selected for [Printer].





1. Disable these settings

When this check box is selected,  appears in the tab, and the settings can no longer be specified or changed.

The settings in a tab where  appears will not be applied to the printer even if **[Apply]** is clicked. In addition, the settings in the tab will not be saved or exported when the **[Save in Command File]** or **[Export]** command is executed.

To apply the settings to the printer or save or export them, be sure to clear the check box.

2. Set Clock

Set the date and time for the LCD.

3. Current Date/Time

Click to retrieve the current date and time from the computer and display them.

4. Date Format

Select the date format for the clock.

5. Time Format

Select the time format for the clock.

6. Start Up in Template Mode

Select whether the template mode starts when the printer is turned on.

Available settings: **[On]**, **[Off]**



In the template mode, you can replace the contents of the templates stored in the printer and print them.

7. Confirm Print

Select whether a message appears before printing so that the number of copies can be confirmed.


Available settings: **[On]**, **[Off]**

8. Default Print#

Specify the default number of copies that appears when printing.

Available settings: 1–999

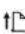
Can I print out the printer settings?

You can use the  (Feed) button to print a report that lists the following printer settings:

- Program version
- Printer usage history
- Missing dot test pattern
- Printer setting information
- List of transferred data
- Network setting information



- You can use the Printer Setting Tool to set in advance which items will be printed.
- The node name appears in the Printer Settings. The default node name is "BRWxxxxxxxx". ("xxxxxxxx" is based on your printer's MAC Address / Ethernet Address.)

1. Make sure that a roll of 3" (76.2 mm) receipt paper has been loaded and the RD Roll compartment cover is closed.
2. Turn on the printer.
3. Press and hold the  (Feed) button until the POWER indicator starts blinking in green (for RJ-3050) or the message "Printing" is displayed on the LCD (for RJ-3150). The settings will be printed.



- To print the Printer Set-up Information, we recommend to use 3" (76.2 mm) receipt paper.
- This operation can also be performed using the Printer Setting Tool.

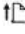




How to identify the printer's firmware version.

You can confirm the firmware version by printing the printer information.

To print the printer settings report:

1. Make sure that a roll of 3" (76.2 mm) receipt paper has been loaded and the RD Roll compartment cover is closed.
2. Turn on the printer.
3. Press and hold the  (Feed) button until the POWER indicator starts blinking in green (for RJ-3050) or the message "Printing" is displayed on the LCD display (for RJ-3150). The settings will print.
4. When the list of printer settings is printed, check "ProgVer" under "<<PRINTER CONFIGURATION>>".

© 2001-2021 Brother Industries, Ltd. All Rights Reserved.

Any trade names and product names of companies appearing on Brother products, related documents and any other materials are all trademarks or registered trademarks of those respective companies.










Installing a CA certificate

You can install a CA certificate onto your printer using the following method.

Installing a CA certificate using EWS (Embedded Web Server)

1. Make sure the printer and your computer are connected via Wi-Fi®.
2. Start your web browser.
3. Type "http://machine's IP address/" in the browser's address bar (where "machine's IP address" is the machine's IP address).
E.g. http://192.168.1.2/
4. Enter the password, and then press  (Right arrow button).



You may be asked for the default login password depending on your model.
The default login password is preceded by "Pwd" and located either on the bottom of the printer or in the battery or media compartment.

For more information, see [IMPORTANT – Network Security Notice: Default Login Password Change] on the [Manuals] page.

5. Click **Network**.
6. Click **Security**.
7. Click **CA Certificate**.




8. Click **Import CA Certificate**.
9. Select the CA certificate you want to install and import.



Setting a password:

We recommend changing the login password to prevent unauthorised access to EWS.

1. Click **Administrator**.
2. Type the password you want to use (up to 32 characters).
3. Re-type the password in the **Confirm new password** box.
4. Click **Submit**.

The next time you access EWS, enter the password in the Login box, and then click .

After configuring the settings, logout by clicking .

You can also set a password by clicking **Please configure the password**, on the printer's web page if you are not setting a login password.

P-touch Editor displays "There is no printer driver installed with this application." (Windows 10)



If you receive this error, your printer may have been incorrectly detected by your computer. Do the following:

1. Click the **Start Menu > (All apps) > Windows System > Control Panel > Hardware and Sound > Devices and Printers**.
2. Check if your printer is listed as an unspecified device.



If the printer is not listed in **Devices and Printers**, make sure that :

- The printer is turned on.
- The printer is connected to the computer via USB.

3. Right-click the printer listed as an unspecified device, and then click **Remove device**.



4. Make sure the USB cable is connected to the computer and the printer.
5. Turn the printer off and then on. The computer should be able to correctly detect the printer.



If the printer has not been detected, disconnect the USB cable, and then connect it again.





































































I get the message "OneDrive could not be accessed" and cannot open or save any files. (P-touch Editor 5.1 / 5.2 for Windows)

For P-touch Editor 5.2:

Update P-touch Editor to the latest version (5.2.020 or higher).

For P-touch Editor 5.1:

Do the following:

If you cannot open any files from [Open] - [OneDrive]:

1. Start P-touch Editor and click [Open] - [Computer].
2. Select [OneDrive] from [Look in] and choose the file you want to open.

If you cannot save any files from [File] - [Save to Web]:

1. Click [File] - [Save] or [Save as].
2. Click [OneDrive], and then click the [Save] button.

© 2001-2022 Brother Industries, Ltd. All Rights Reserved.

Any trade names and product names of companies appearing on Brother products, related documents and any other materials are all trademarks or registered trademarks of those respective companies.





How can I connect the printer to my mobile device via Wi-Fi®?



- To connect to a wireless network, you must use the Li-ion battery (Optional: PA-BT-001-B for RJ-3050, PA-BT-001-A for RJ-3150) and AC adapter (Optional: PA-AD-600).
- To print wirelessly using iPad, iPhone, iPod Touch, etc. (hereinafter referred to as "Apple device"), you must use AirPrint.
- AirPrint (compatible with Apple device) can print pictures, PDF files etc.

Choose a connection method to wirelessly connect the printer and your Apple device.

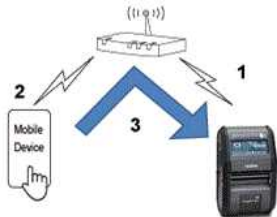
> [If you have a wireless router/access point:](#)

> [If you do not have a wireless router/access point:](#)

If you have a wireless router/access point:

Connect using a wireless router/access point (Infrastructure mode)

If you have a wireless router/access point, do the following:



1. Connect your Brother printer to your wireless router/access point.
2. Connect your mobile device to the same wireless router/access point. (You can skip this step if your device is already connected to a Wi-Fi® network.)
3. You can now print from your mobile device wirelessly.

Connect using a wireless router/access point (WPS): RJ-3150 only

If your wireless router/access point supports WPS (Wi-Fi Protected Setup™), do the following:




If you cannot use the wireless router/access point, go to ["Connect the printer to the wireless router/access point using your computer"](#).

1. First, confirm that your wireless router/access point has the WPS symbol. Place the printer close to the wireless router/access point.



WPS

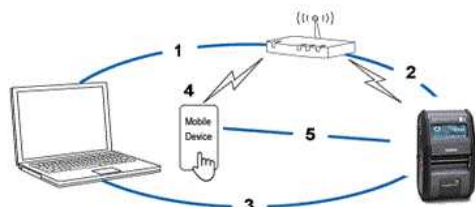
2. Press the [Menu], [▲], or [▼] button to select the [WLAN] menu, and then press the [OK] button.
3. Set [WPS] to [Start] in the menu.
4. Press the WPS button on your wireless router/access point and the [OK] button on your printer, and then [WPS setting] is displayed on the LCD.
5. When the connection is established, the WLAN  icon appears in blue.
If the WLAN icon does not appear in blue:
Go to ["Connect the printer to the wireless router/access point using your computer"](#).
6. Connect your mobile device to the wireless router/access point. (You can skip this step if your device is already connected to a Wi-Fi network.)
 - a. Tap [Settings] - [Wi-Fi] on the mobile device, and slide the toggle button to activate Wi-Fi.
 - b. Select the SSID (Network Name) of the wireless router/access point that you connected to in step 6, and then enter the password. The connection between your mobile device and the wireless router/access point will be established.
7. You can now print from your mobile device wirelessly.

[\[▲ Back To Top \]](#)

Connect the printer to the wireless router/access point using your computer



Before you proceed, make sure your computer is equipped with a Wi-Fi interface that is connected to a wireless network. If it is not, the computer will not be able to connect to your printer wirelessly.



1. Connect your computer to your wireless router/access point.
2. Connect your Brother printer to the same wireless router/access point.
3. Connect your printer and computer.
4. Connect your mobile device to the same wireless router/access point. (You can skip this step if your device is already connected to a Wi-Fi network.)
5. Connect your mobile device and printer.

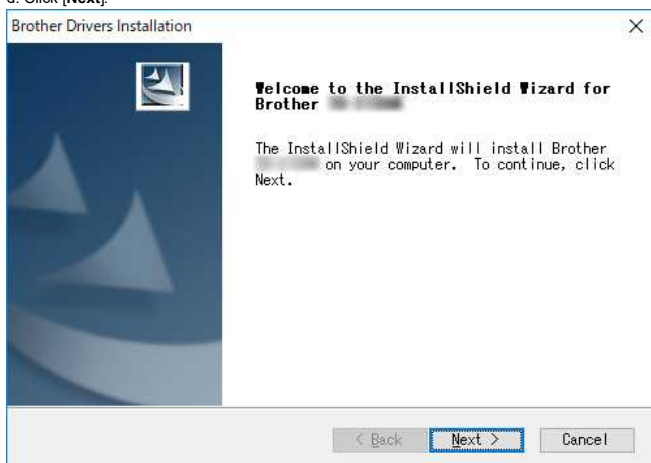


Before you begin, confirm the SSID (Network Name) and the password (Network Key) of your wireless router/access point.

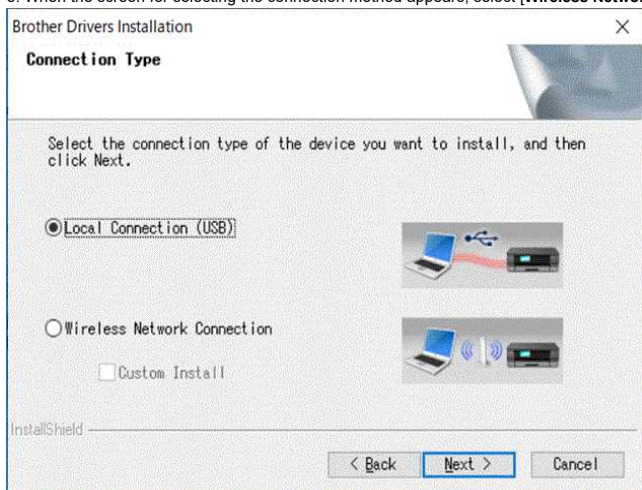
- a. Download the printer driver from the [\[Downloads\]](#) section of this website.
- b. Double-click the downloaded file to begin the installation.
- c. Select **[USB cable/WLAN]**, and click **[OK]**.



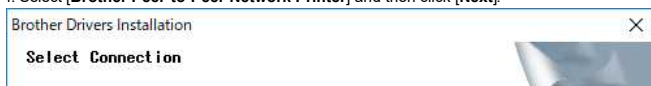
- d. Click **[Next]**.

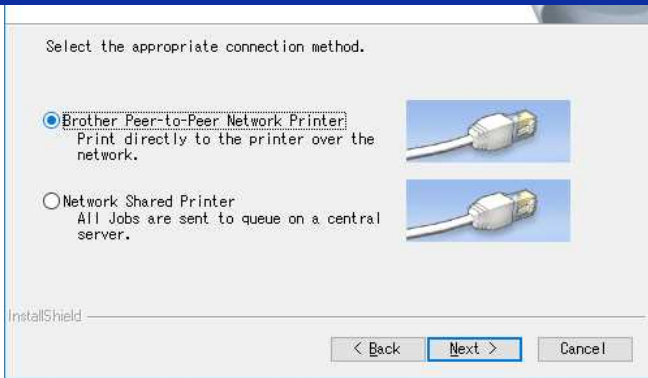


- e. When the screen for selecting the connection method appears, select **[Wireless Network Connection]**, and then click **[Next]**.

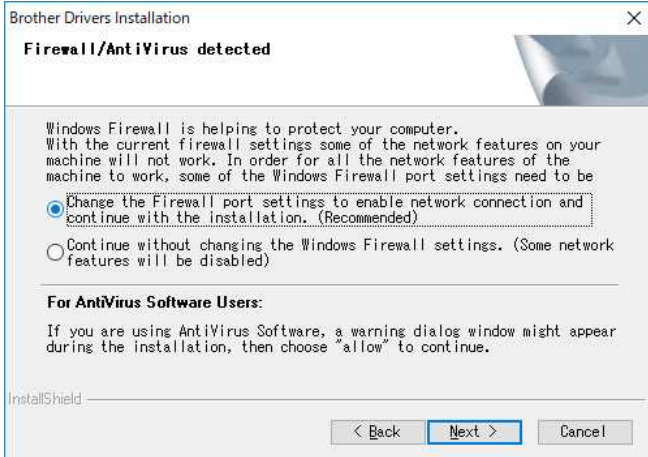


- f. Select **[Brother Peer-to-Peer Network Printer]** and then click **[Next]**.





g. Select **[Change the Firewall port settings to enable network connection and continue with the installation. (Recommended)]**, and then click **[Next]**.

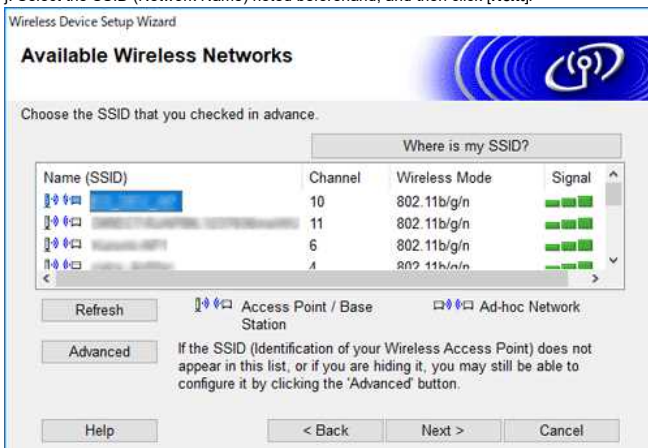


h. Prepare the USB cable, select **[Yes, I have a USB cable to use for installation]**, and then click **[Next]**. Follow the on-screen instructions.

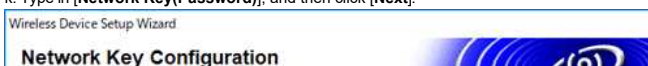


i. The wizard will search for wireless networks available to your printer.

j. Select the SSID (Network Name) noted beforehand, and then click **[Next]**.

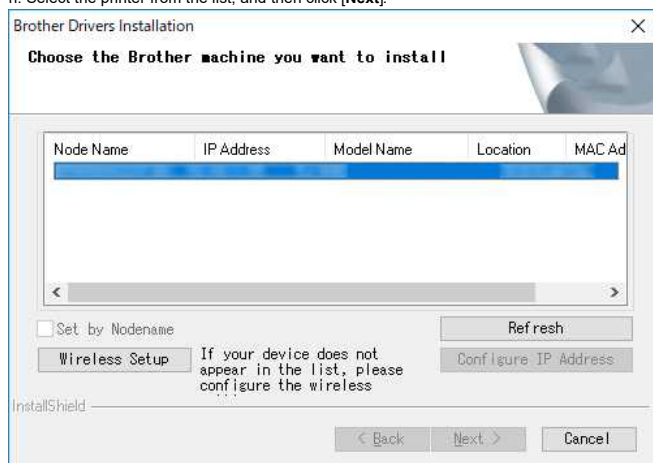


k. Type in **[Network Key(Password)]**, and then click **[Next]**.





- i. Make sure that the setting of Wireless LAN is correct, and then click **[Next]**.
- m. Disconnect the USB cable between your computer and printer, and then click **[Next]**.
- n. Select the printer from the list, and then click **[Next]**.



- o. Follow the on-screen instructions to complete the software installation.
- p. When the installation is complete, and then click **[Finish]** to close the installer window.
- q. When the printer is connected to your wireless router/access point, the Wi-Fi indicator flashes in blue or the WLAN (📶) icon appears on your printer's LCD.
- r. Connect your mobile device to the wireless router/access point. (You can skip this step if your device is already connected to a Wi-Fi network.)
 - i. Tap **[Settings]** - **[Wi-Fi]** and slide the toggle button to activate the Wi-Fi function.
 - ii. Select the SSID you connected to in step j. Your device and the wireless router/access point will be connected.
- s. You can now print from your mobile device wirelessly.

If you do not have a wireless router/access point:

Connect using Wireless Direct

1. Download the printer driver and the Printer Setting Tool from the [\[Downloads\]](#) section of this website, install it in advance.
2. Turn on the printer.
3. Follow the instruction below.

For RJ-3150:

Press the **[Menu]** Button and the **[▼]** Button to select the **[WLAN]** menu, and set **[WLAN (On/Off)]** to **[On]**. The WLAN (📶) icon on the LCD appears in blue.

For RJ-3050:

- i. Press and hold the power (🔌) button until the Wi-Fi indicator flashes in blue.
- ii. Use your computer or mobile device to select the SSID of your printer and, if you set a password in the Printer Setting Tool, enter the password.



The default SSID and password are as follows:

- SSID:
 - RJ-3050: "DIRECT-brRJ-3050[the last five digits of the serial number]"
 - RJ-3150: "DIRECT-brRJ-3150[the last five digits of the serial number]"
- Password: 00000000
- If you cannot find the serial number label, see "[Where can I find my Brother printer's serial number?](#)".
- If you set a password with the communication settings, enter the password.




Ad-hoc mode allows you to connect the printer to your computer or mobile device directly without a Wi-Fi access point/router.

1. Turn on the printer.

2. Follow the steps below.

For RJ-3150:

Press the **[Menu]** Button and the **[▼]** Button to select the **[WLAN]** menu, and set **[WLAN (On/Off)]** to **[On]**. The WLAN  icon on the LCD appears in blue.

For RJ-3050:

Press and hold the power  button until the Wi-Fi indicator flashes in blue.

3. Use your computer to configure the Ad-hoc mode settings of the printer.

4. Use your computer or mobile device to select the SSID of your printer, and if you set a password in the Printer Setting Tool, enter the password.

For Apple devices

The following devices may not support Ad-hoc mode:

- (iOS 14 or later) iPhone 12 series, iPhone 11 series, and iPhone SE 2nd generation
- (iPadOS 14 or later) iPad Pro 5th generation and iPad Air 4th generation
- iPad and iPad mini released after 2021

To connect your printer to these devices, we recommend using Wireless Direct.

For computers

Not all computers and operating systems support Ad-hoc mode.

[\[▲ Back To Top \]](#)

© 2001-2022 Brother Industries, Ltd. All Rights Reserved.

Any trade names and product names of companies appearing on Brother products, related documents and any other materials are all trademarks or registered trademarks of those respective companies.

How do I connect the printer to my computer via Wi-Fi®?



To print using a wireless network connection, you must download and install the printer driver and Printer Setting Tool.

Establishing a wireless network connection using a USB cable temporarily (recommended)

1. Confirm the SSID and password of your WLAN access point/router beforehand.
2. Download and install the printer driver and P-touch Editor from the [Downloads](#) section of this website.
3. When installing the printer driver, the setting items for the wireless network connection will be displayed. Complete the setup according to the on-screen instructions.




If you do not know the SSID and password of your WLAN access point/router, contact your system administrator.

If you did not configure the wireless network connection settings when installing the printer driver, you can use one of the following configuration methods.

- > [Establishing a wireless network connection using WPS \(Wi-Fi Protected Setup™\): RJ-3150 only](#)
- > [Establishing a wireless network connection using Infrastructure mode](#)
- > [Establishing a wireless network connection using Wireless Direct](#)
- > [Establishing a wireless network connection using the Ad-Hoc mode](#)

Establishing a wireless network connection using WPS (Wi-Fi Protected Setup™): RJ-3150 only

If your WLAN access point/router supports WPS (Wi-Fi Protected Setup™), settings and connections can be configured easily with the press of a button.

- a. First, confirm that your WLAN access point/router has the WPS symbol and place the printer within the range of the WLAN access point/router. The range may differ depending on your environment.
- b. Press the [Menu], [▲] or [▼] button to select the [WLAN] menu, and then press the [OK] button.
- c. Set [WPS] to [On] in the menu.
- d. Press the WPS button on your wireless router/access point and the [OK] button on your printer, and then [WPS setting] is displayed on the LCD.
- e. When the connection is established, the WLAN () icon appears in blue.




Your printer will try to connect using WPS for two minutes. If the [Menu] button is pressed during that time, the printer will continue trying to connect for an additional two minutes.

- f. Next, you need to add the printer to the computer. [Click here to see the steps.](#)


Establishing a wireless network connection using Infrastructure mode

- a. Confirm the SSID (network name) and password (network key) of your WLAN access point/router beforehand.
- b. Connect the printer and computer with a USB cable.
- c. Follow the steps below:

For RJ-3150:

Press the [Menu] button and the [▲] or [▼] button to select the [WLAN] menu, and set [WLAN (On/Off)] to [On]. The WLAN () icon on the LCD appears in blue.

For RJ-3050:

Press and hold the power () button to turn on the printer until the Wi-Fi indicator flashes in blue.

- d. Start the Printer Setting Tool on your computer, and click the [Communication Settings] button. Select [Wireless LAN] in the [General] tab.
([For information on the Communication settings, click here.](#))
- e. Enter the SSID that you have noted, or click [Search] and select the SSID from the displayed list.
- f. Enter the password in the [Passphrase] field.



The required information depends on the authentication method and encryption mode; enter only the information relevant to your network environment.


- g. To send the settings to the printer, click [Apply].
- h. When the connection is established, the WLAN () icon on the LCD appears in blue or the Wi-Fi indicator is lit in blue.
- i. Next, you need to add the printer to the computer. [Click here to see the steps.](#)

Establishing a wireless network connection using Wireless Direct


Wireless Direct allows you to connect the printer to your computer directly without a Wi-Fi access point/router; the printer serves as a Wi-Fi access point.

- a. Confirm the Wireless Direct settings of the printer. You can configure the settings from the printer or your computer.

For RJ-3150:

Press the **[Menu]** button and the **[▲]** or **[▼]** button to select the **[WLAN]** menu, and set **[WLAN (On/Off)]** to **[On]**. The WLAN  icon on the LCD appears in blue.

For RJ-3050:

Press and hold the power  button to turn on the printer until the Wi-Fi indicator flashes in blue.

- b. Connect the printer and computer with a USB cable.
- c. Start the Printer Setting Tool on your computer, and click the **[Communication Settings]** button.
- d. Confirm that **[Wireless Direct]** is selected for **[Selected Interface]** in the **[General]** tab. For more information, see the FAQ: "[Using the Communication Settings \(for Windows\)](#)".
- e. Select the SSID of the printer on your computer or mobile device. Enter the password if necessary.



- The factory default SSID and password are as follows:
SSID: "DIRECT-brRJ-3050[the last four digits of the serial number]" (for RJ-3050), "DIRECT-brRJ-3150[the last four digits of the serial number]" (for RJ-3150).
- Password (Network key): 00000000
If you cannot find the serial number label, see "[Where can I find my Brother printer's serial number?](#)"
- If you set a password via the Communication Settings, enter the password.

- f. Next, you need to add the printer to the computer. [Click here to see the steps.](#)

Establishing a wireless network connection using the Ad-Hoc mode



- Ad-hoc mode allows you to connect the printer to your computer directly without a Wi-Fi access point/router.
- Not all computers, mobile devices, and operating systems support Ad-hoc mode.


- a. Turn on the printer.
- b. Follow the steps below.

For RJ-3150:

Press the **[Menu]** button and the **[▲]** or **[▼]** button to select the **[WLAN]** menu, and set **[WLAN (On/Off)]** to **[On]**.

For RJ-3050:

Press and hold the power  button to turn on the printer.

- c. Use your computer to configure the Ad-hoc Mode settings of the printer.
- d. Use your computer to select the SSID of your printer and, if you set a password in the Printer Setting Tool, enter the password. When the connection is established, the WLAN  icon on the LCD appears in blue or the Wi-Fi indicator is lit in blue.
- e. Next, you need to add the printer to the computer. [Click here to see the steps.](#)

If you want to change any other network settings, use the Communication Settings.

[For details on the Communication Settings, click here.](#)

How to add the printer to the computer:

1. Display **[Devices and Printers]** on your computer.
2. Click **[Add a printer]**.
3. Click **[Add a network, wireless or Bluetooth printer]** – **[Next]**.
4. Click **[The printer that I want isn't listed]** - **[Next]**.
5. Select **[Add a printer using a TCP/IP address or hostname]**, and click **[Next]**.
6. Select **[TCP/IP Device]** for **[Device type]**.
7. Enter your printer's IP address in **[Host name or IP address]**.



Your printer's IP address is displayed in **[Current Status]** under the **[Wireless LAN]** or **[Wireless Direct]** tab in the Communication Settings.

8. Confirm that **[Query the printer and automatically select the driver to use]** is checked, and click **[Next]**.
9. Select **[Use the driver that is currently installed (recommended)]**, and click **[Next]**.
10. Enter an arbitrary name in **[Printer name]**, and click **[Next]**.
11. Select **[Do not share this printer]**, and click **[Next]**.
12. Click **[Finish]**.

Related FAQs

- ▶ [How can I connect the printer to my mobile device via Wi-Fi®?](#)

Install BRAdmin Professional 3

> [Click here to download BRAdmin Professional 3.](#)

Once the download is complete, double-click on the downloaded file. Follow the on-screen instructions to complete the installation.

© 2001-2022 Brother Industries, Ltd. All Rights Reserved.

Any trade names and product names of companies appearing on Brother products, related documents and any other materials are all trademarks or registered trademarks of those respective companies.



